

U.S. PUBLIC LAND SURVEY MONUMENT RECORD

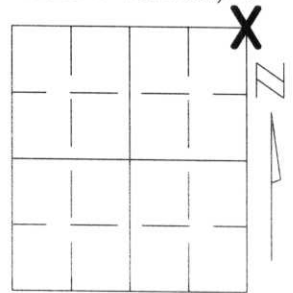
Note: This form is intended and designed to fulfill all requirements of Wisconsin Administrative Code, Chapter A-E 5.02, U.S. Public Land Survey Monument Record (3)(a)(b)(c)(d)(e)(f)(g)(h)(i). An additional sheet may be added if necessary to conform with said requirements.

(a) Corner location: Township 34 North

Range 7 East

Town/City/Village SKANAWAN

County LINCOLN

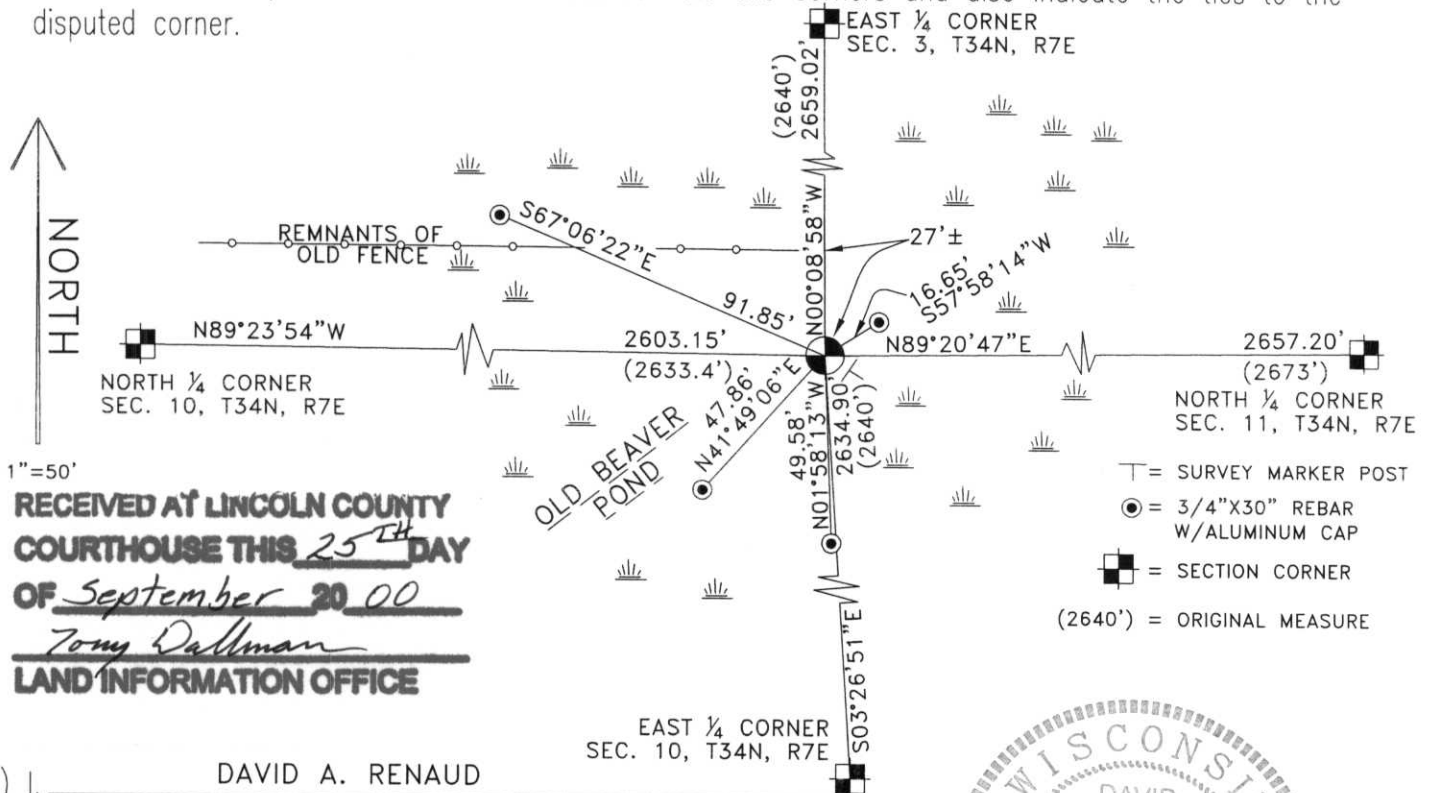


Section 10

(b)(f)(g)(h) Description of monument found at this corner and if it was accepted, state all evidence (material, testimonial, occupational, plats, records, other monuments) used as a basis for accepting. If not accepted or if nothing was found, state evidence used as basis for establishing location. If reestablished through lost corner proportionate methods, indicate all monuments, distances and directions used to establish.

I FOUND NO EVIDENCE OF THE ORIGINAL MONUMENTATION OR ACCESSORIES. I FOUND A BERNSTEN MONUMENT WITH ALUMINUM CAP ABOUT 27 FEET SOUTH OF THE REMNANTS OF AN OLD FENCELINE. THE DISTANCE BETWEEN THIS CORNER AND 1/4 CORNERS 1/2 MILE EAST AND WEST OF THIS LOCATION MEASURED LONGER THAN THE ORIGINAL GOVERNMENT MEASURE, BUT THE DISTANCES BETWEEN THESE CORNERS FIT PROPORTIONALLY. I FOUND MONUMENTATION IN SECTION 11, T.34N., R.7E. FROM PREVIOUS SURVEYS THAT FITS THIS CORNER WELL. THE DISTANCE BETWEEN THE FOUND MONUMENT AND THE REMONUMENTED NORTH 1/4 CORNER OF SECTION 10, WAS WITHIN 10 FEET OF THE DISTANCE BETWEEN THAT NORTH 1/4 CORNER AND THE NORTHWEST CORNER OF SECTION 10. I ACCEPTED THE FOUND MONUMENT AS THE BEST AVAILABLE EVIDENCE OF THE CORNERS ORIGINAL LOCATION.

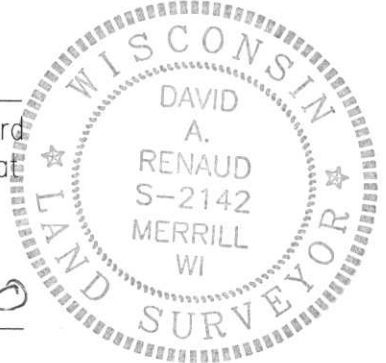
(c)(d)(e) Plan view of corner with ties to at least 4 witness monuments. If in disagreement with previously established corner, show the distances between the two corners and also indicate the ties to the disputed corner.



1"=50'
RECEIVED AT LINCOLN COUNTY COURTHOUSE THIS 25TH DAY OF September 20 00
Tom Dallman
LAND INFORMATION OFFICE

(i) I, DAVID A. RENAUD
(type or print name) certify that the corner location on this record was determined by me or under my direction and control and that this U.S. Public Land Survey Monument Record is correct and complete to the best of my knowledge and belief.

David A. Renaud Sept. 17, 2000
Signature Date



Index No. E-17