

U.S. PUBLIC LAND SURVEY MONUMENT RECORD

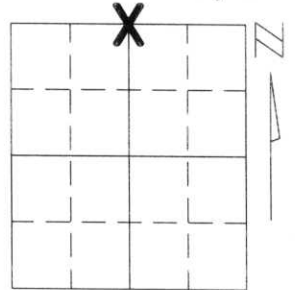
Note: This form is intended and designed to fulfill all requirements of Wisconsin Administrative Code, Chapter A-E 5.02, U.S. Public Land Survey Monument Record (3)(a)(b)(c)(d)(e)(f)(g)(h)(i). An additional sheet may be added if necessary to conform with said requirements.

(a) Corner location: Township 34 North

Range 7 East

Town/City/Village SKANAWAN

County LINCOLN

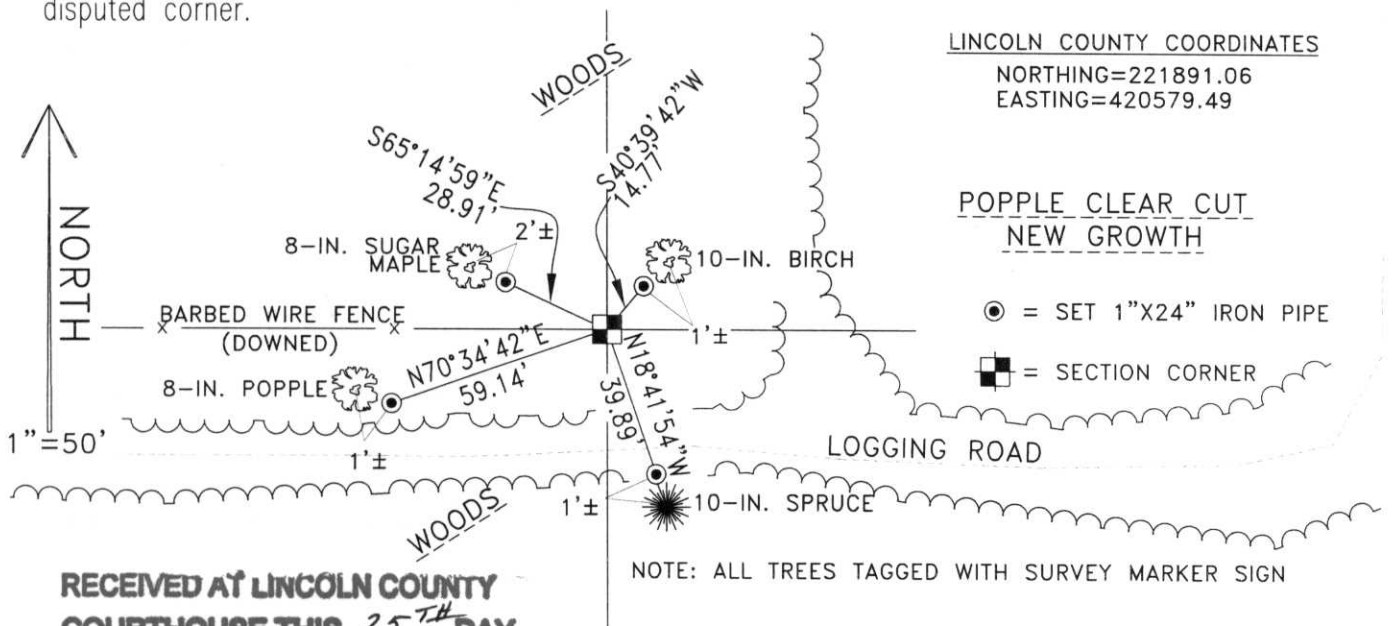


Section 11

(b)(f)(g)(h) Description of monument found at this corner and if it was accepted, state all evidence (material, testimonial, occupational, plats, records, other monuments) used as a basis for accepting. If not accepted or if nothing was found, state evidence used as basis for establishing location. If reestablished through lost corner proportionate methods, indicate all monuments, distances and directions used to establish.

I FOUND NO EVIDENCE OF THE ORIGINAL CORNER'S MONUMENTATION OR ACCESSORIES. I DID FIND A CONCRETE MONUMENT AT AN OLD FENCE LINE RUNNING EAST AND WEST. THIS MONUMENT WAS SET BY THE TOWN OF SKANAWAN DURING A REMONUMENTATION PROGRAM AS PER PAT PRIEBE, LINCOLN COUNTY LAND INFORMATION OFFICE. I ACCEPTED THIS MONUMENT AS THE BEST EVIDENCE OF THE CORNER'S ORIGINAL LOCATION FOR THE SOUTH 1/4 CORNER OF SECTION 11.

(c)(d)(e) Plan view of corner with ties to at least 4 witness monuments. If in disagreement with previously established corner, show the distances between the two corners and also indicate the ties to the disputed corner.



LINCOLN COUNTY COORDINATES
NORTHING=221891.06
EASTING=420579.49

POPPLE CLEAR CUT
NEW GROWTH

● = SET 1"X24" IRON PIPE

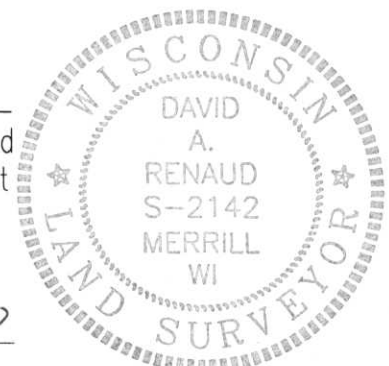
■ = SECTION CORNER

NOTE: ALL TREES TAGGED WITH SURVEY MARKER SIGN

RECEIVED AT LINCOLN COUNTY
COURTHOUSE THIS 25TH DAY
OF September 20 00

Tony Dallman
LAND INFORMATION OFFICE

(i) I, DAVID A. RENAUD
(type or print name) certify that the corner location on this record was determined by me or under my direction and control and that this U.S. Public Land Survey Monument Record is correct and complete to the best of my knowledge and belief.



Index No. E-19

David Renaud Sept. 17, 2000
Signature Date