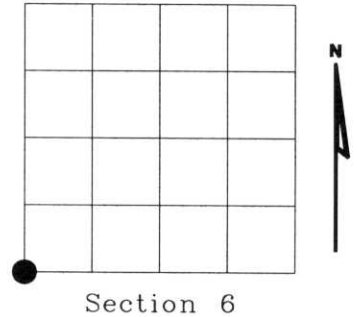


# U.S. PUBLIC LAND SURVEY MONUMENT RECORD

NOTE: This form is intended and designed to fulfill all requirements of Wisconsin Administrative Code, Chapter A-E 7.08 U.S. Public Land Survey Monument Record (3)(a)(b)(c)(d)(e)(f)(g)(h)(i). An additional sheet may be added if necessary to conform with said requirements.

(a) Corner location: Township 34 North  
 Range 08 East  
 Town of HARRISON  
 LINCOLN County, Wisconsin



(b)(f)(g)(h) Description of monument found at this corner and if it was accepted, state all evidence (material, testimonial, occupational, plats, records, other monuments) used as a basis for accepting. If not accepted or if nothing was found, state evidence used as basis for establishing location. If reestablished through lost corner proportionate methods, indicate all monuments, distances and directions used to establish. Indicate type of monument found or set and sign post.

1851 - Original corner set by Jas. M. Marsh.

1938 - Frances Fuchs found very old charred post, stump corresponds to original. Set 6"x6" granite stone with large mound of rocks.  
 BT: 22" pine stump S4°E 45.45 Lks.

2002 - I found 6"x6" granite stone in mound of rock.  
 8" round wooden post N79°E, 8'.

Witnessed corner as shown below.

RECEIVED AT LINCOLN COUNTY  
 COURTHOUSE THIS 11<sup>TH</sup> DAY  
 OF December 20 02  
*Tony Deller*  
 LAND INFORMATION OFFICE

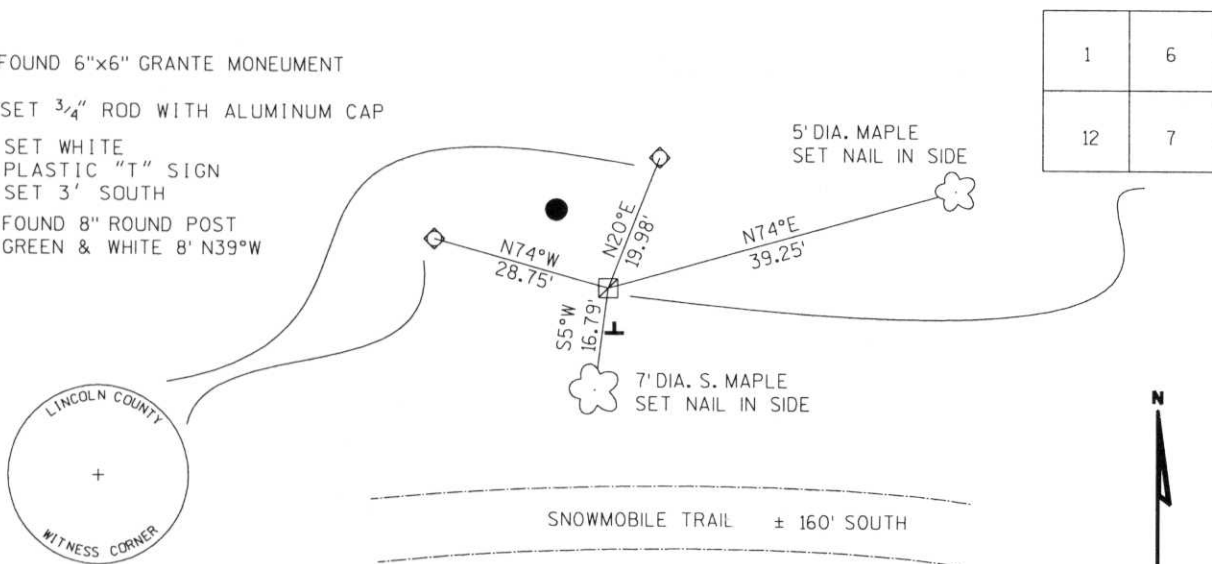
(c)(d)(e) Plan view of corner with ties to at least 4 witness monuments. If in disagreement with previously established corner, show the distances between the two corners and also indicate the ties to the disputed corner.

FOUND 6"x6" GRANITE MONUMENT

SET 3/4" ROD WITH ALUMINUM CAP

SET WHITE  
 T PLASTIC "T" SIGN  
 SET 3' SOUTH

FOUND 8" ROUND POST  
 GREEN & WHITE 8' N39°W



(i) I, Dennis B. Roberts, Registered Land Surveyor \*S-1863, hereby certify that the corner location on this record was determined by me or under my direction and control and that this U.S. Public Land Survey Monument Record is correct and complete to the best of my knowledge and belief.

*Dennis B. Roberts*  
 Signature 12-04-02  
 Date



Index No. E-1