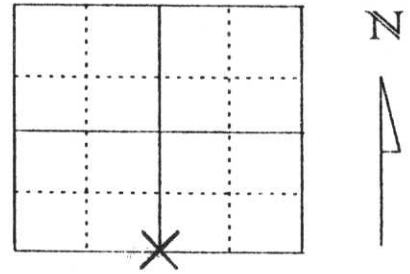


U.S. PUBLIC LAND SURVEY MONUMENT RECORD

Note: This form is intended and designed to fulfill all requirements of Wisconsin Administrative Code, Chapter A-E 5.02, U.S. Public Land Survey Monument Record (3) (a) (b) (c) (d) (e) (f) (g) (h) (i). An additional sheet may be added if necessary to conform with said requirements.

(a) Corner location: Township 34 North
 Range 6 East
 Town/City/Village BRADLEY (SOUTH)
 County Lincoln



Section 36

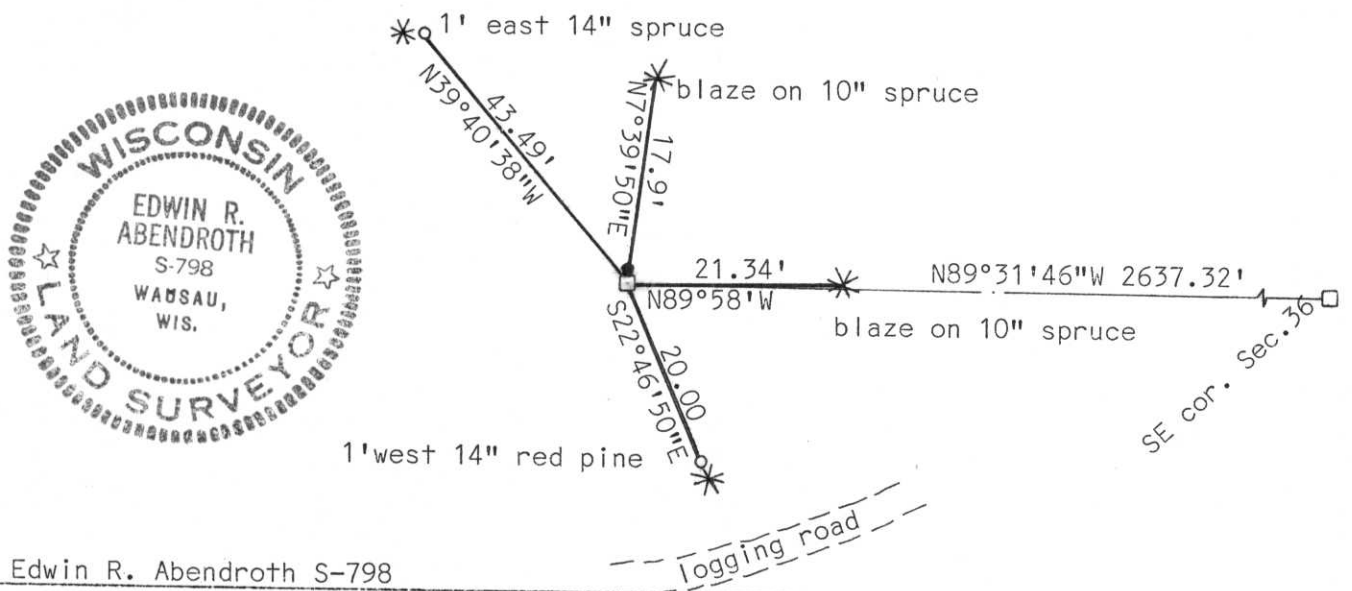
(b) (f) (g) (h) Description of monument found at this corner and if it was accepted, state all evidence (material, testimonial, occupational, plats, records, other monuments) used as a basis for accepting. If not accepted or if nothing was found, state evidence used as basis for establishing location. If reestablished through lost corner proportionate methods, indicate all monuments, distances and directions used to establish.

Original corner set was a wood post with bearing trees. Found 8" X 8" blue granite stone, with iron bar on north side. Stone was set by Fannie Foxx who found the iron bar. Included this monument to section 31 to east. Distance and evidence were accepted as correct.

Also found several bearing trees assumed set by Mr. Foxx. Corner fell on down fence line.

RECEIVED AT LINCOLN COUNTY
 COURTHOUSE THIS 7th DAY
 OF Oct 19 98
Pat Priebe
 TAX DESCRIPTION OFFICE

(c) (d) (e) Plan view of corner with ties to at least 4 witness monuments. If in disagreement with previously established corner, show the distances between the two corners and also indicate the ties to the disputed corner.



(i) I, Edwin R. Abendroth S-798
 (type or print name) certify that the corner location on this record was determined by me or under my direction and control and that this U.S. Public Land Survey Monument Record is correct and complete to the best of my knowledge and belief.

Edwin R. Abendroth Signature October 5, 1998 Date

Index No. 1-23