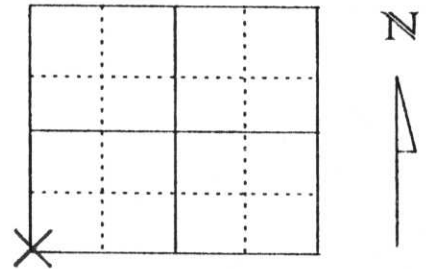


# U.S. PUBLIC LAND SURVEY MONUMENT RECORD

Note: This form is intended and designed to fulfill all requirements of Wisconsin Administrative Code, Chapter A-E 5.02, U.S. Public Land Survey Monument Record (3) (a) (b) (c) (d) (e) (f) (g) (h) (i). An additional sheet may be added if necessary to conform with said requirements.

(a) Corner location: Township 34 North  
 Range 7 East  
 Town/City/Village SKANAWAN  
 County Lincoln



Section 31

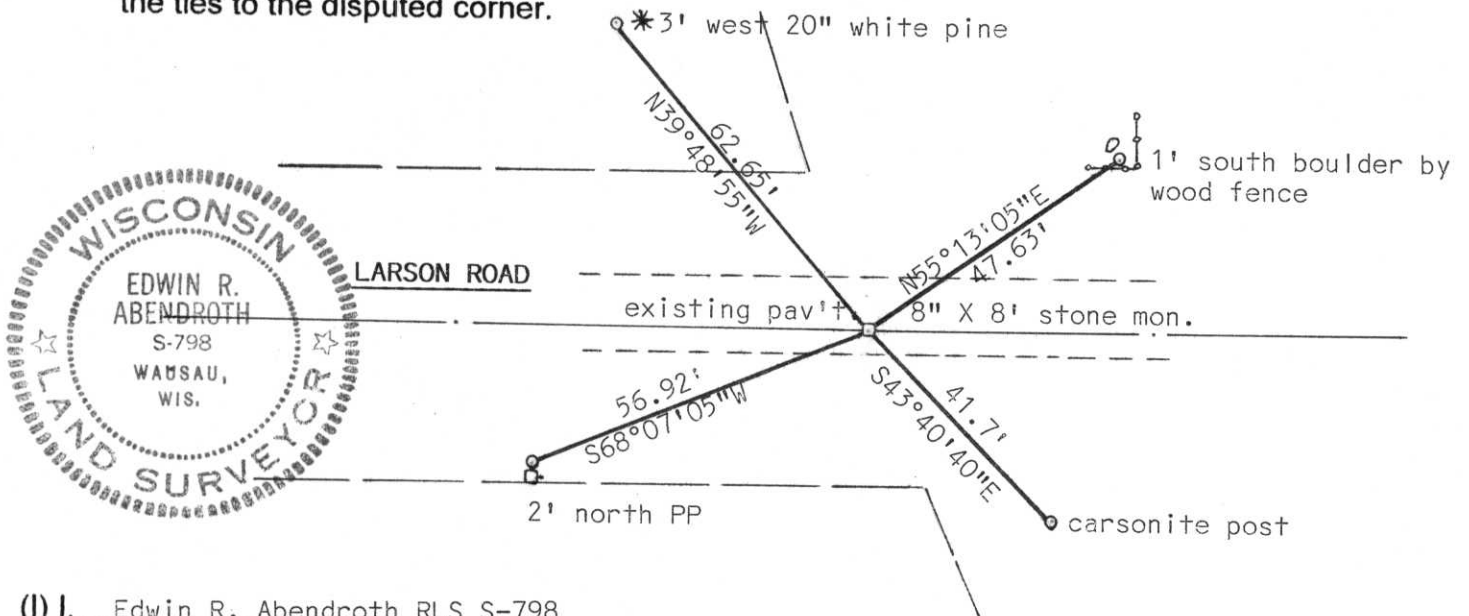
(b) (f) (g) (h) Description of monument found at this corner and if it was accepted, state all evidence (material, testimonial, occupational, plats, records, other monuments) used as a basis for accepting. If not accepted or if nothing was found, state evidence used as basis for establishing location. If reestablished through lost corner proportionate methods, indicate all monuments, distances and directions used to establish.

Original corner was wood post with bearing tree accessories. Found no evidence of original evidence. Cut black top pav't. where magnetic bearing appeared. Found chainsaw blade on top of 8" sq. granite stone. Saw blade was set to aid corner location by Lester Schmidt who located corner but did not tie out.

Included corner in Section traverse and accepted as correct. Tied same.

RECEIVED AT LINCOLN COUNTY  
 COURTHOUSE THIS 7th DAY  
 OF Oct 1998  
*Pat Pribe*  
 TAX DESCRIPTION OFFICE

(c) (d) (e) Plan view of corner with ties to at least 4 witness monuments. If in disagreement with previously established corner, show the distances between the two corners and also indicate the ties to the disputed corner.



(i) I, Edwin R. Abendroth RLS S-798

(type or print name) certify that the corner location on this record was determined by me or under my direction and control and that this U.S. Public Land Survey Monument Record is correct and complete to the best of my knowledge and belief.

*Edwin R. Abendroth*

October 5, 1998

Signature

Date

Index No. 9-1