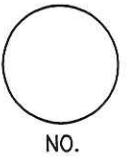


LINCOLN COUNTY U.S. PUBLIC LAND SURVEY MONUMENT LOCATION RECORD

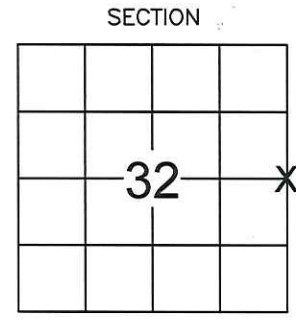
SECTION 32
 TOWNSHIP 34 N
 RANGE 6 E



LANDMARK BENCHMARK FOUND
 CORNER IDENTITY: _____ SURVEY MARKING PIN (SMP) SET
 _____ RESET
 _____ RE-TIED

BRADLEY
 CITY, VILLAGE, TOWN

LINCOLN COUNTY COORDINATE: N: 198352.94
 NAD 1983 (2007) E: 375498.04



ELEVATION-(FEET): _____ DATUM: _____
 WEATHER: OVERCAST / FOG
 DATE OF SURVEY: 10-23-2012 TEMPERATURE: 40° °F
 SURVEY PARTY: NATHAN WINCENTSEN / KEITH WALKOWSKI

LOCATION (Indicated By X)

BASIS FOR MONUMENT LOCATION:

(DESCRIBE METHOD OF SURVEY AND CORNER AUTHENTICATION)

NO MONUMENT OR TIES COULD BE FOUND AT THE CORNER LOCATION DUE TO THE RECONSTRUCTION OF THE INTERSECTION. SET A SURVEY MARKING PIN AT THE EAST 1/4 CORNER FROM COORDINATES SUPPLIED BY THE LINCOLN COUNTY SURVEYOR.

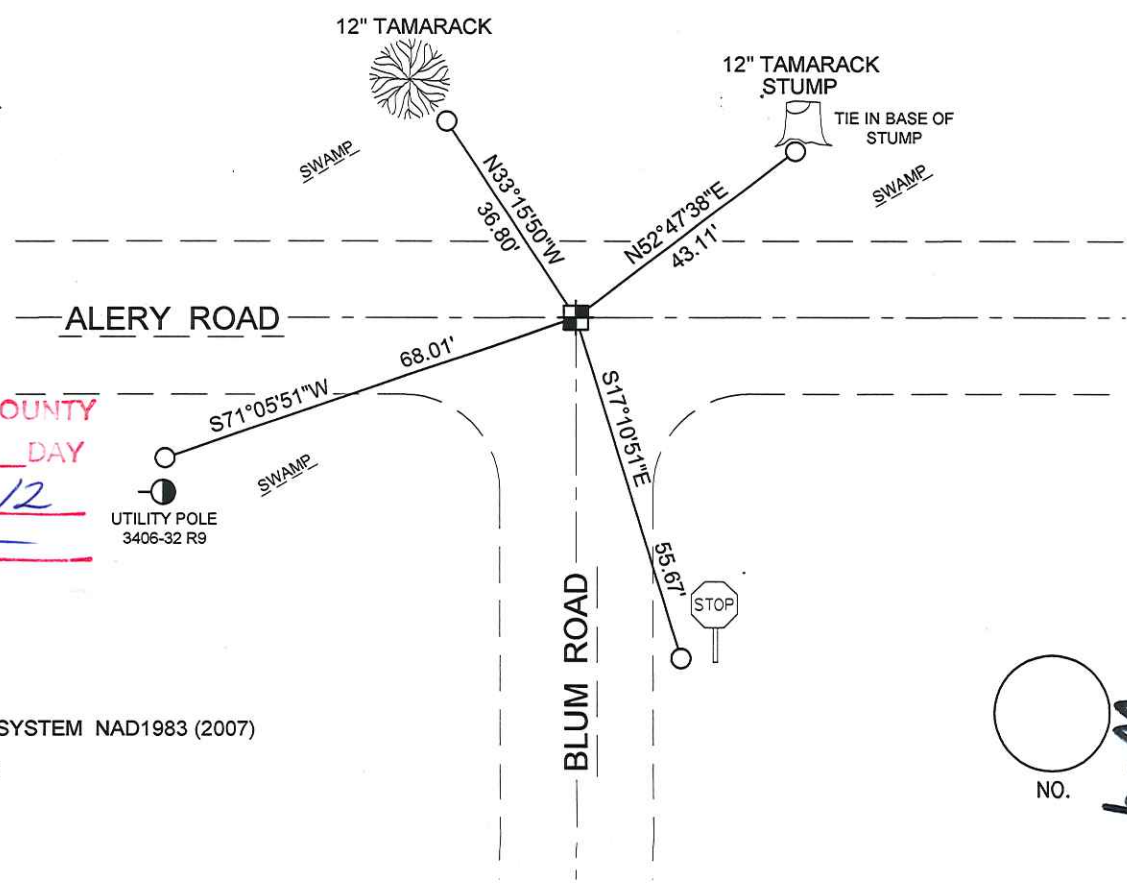


FIELD BOOK NO. 36 PAGE NO. 17
 COMPANY RIVERSIDE LAND SURVEYING LLC

CERTIFIED CORRECT:
Nathan J. Wincentsen
 NATHAN WINCENTSEN S-2539
 Registered Land Surveyor
 DATE: OCT 31ST 2012

TIE SKETCH:

- SURVEY MARKING PIN SET
- SET 7/8" REBAR WITH ALUMINUM CAP



RECEIVED BY LINCOLN COUNTY SURVEYOR THIS 5TH DAY OF November, 20 12
Zong Dabbs
 COUNTY SURVEYOR

- COORDINATES BASED ON THE LINCOLN COUNTY COORDINATE SYSTEM NAD1983 (2007)
 - THIS DRAWING IS NOT TO SCALE

