

U.S. PUBLIC LAND SURVEY MONUMENT RECORD

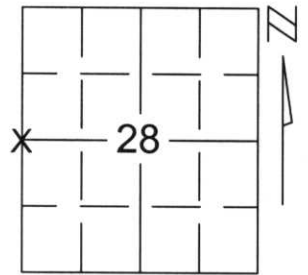
Note: This form is intended and designed to fulfill all requirements of Wisconsin Administrative Code, Chapter A-E 5.02, U.S. Public Land Survey Monument Record (3)(a)(b)(c)(d)(e)(f)(g)(h)(i). An additional sheet may be added if necessary to conform with said requirements.

(a) Corner location: Township 34 North

Range 6 East

Town/City/Village BRADLEY

County LINCOLN



Section 28

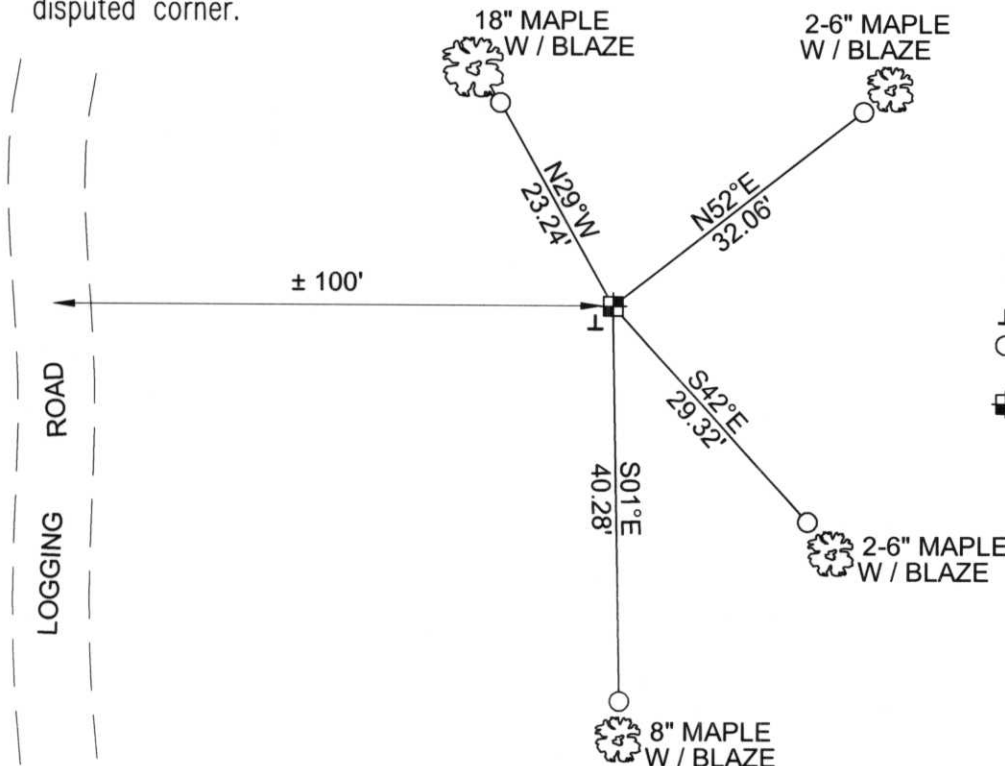
(b)(f)(g)(h) Description of monument found at this corner and if it was accepted, state all evidence (material, testimonial, occupational, plats, records, other monuments) used as a basis for accepting. If not accepted or if nothing was found, state evidence used as basis for establishing location. If reestablished through lost corner proportionate methods, indicate all monuments, distances and directions used to establish.

WE SEARCHED FOR THE WEST 1/4 CORNER AND ORIGINAL BEARING TREES, AND FOUND NOTHING. SET CORNER BY SINGLE PROPORTION FROM THE NORTHWEST CORNER OF SECTION 28 AND FOUND SOUTHWEST CORNER OF SECTION 28.

WE SET A LINCOLN COUNTY MONUMENT AND TIED OUT MONUMENT TO PERPETUATE CORNER LOCATION.

RECEIVED AT LINCOLN COUNTY
COURTHOUSE THIS 9TH DAY
OF January 20 02
Tony Walker
LAND INFORMATION OFFICE

(c)(d)(e) Plan view of corner with ties to at least 4 witness monuments. If in disagreement with previously established corner, show the distances between the two corners and also indicate the ties to the disputed corner.



COORDINATES ARE REFERENCED TO THE LINCOLN COUNTY COORDINATE SYSTEM AS DEVELOPED BY THE WISCONSIN DEPARTMENT OF TRANSPORTATION AND WERE DETERMINED BY GPS OBSERVATIONS ON CONTROL POINTS AS SUPPLIED BY LINCOLN COUNTY.

BEARINGS ARE REFERENCED TO MAGNETIC NORTH.

- ⊥ - SET VINYL "T" MARKER POST
- - SET 3/4" x 30" REBAR W/ ALUM CAP 1' FROM BEARING TREE
- ⊞ - WEST 1/4 CORNER SET LINCOLN COUNTY MONUMENT W/ ALUM CAP

NORTH

NOT TO SCALE

(i) I, Thomas A. Radenz, RLS certify that the corner location on this record was determined by me or under my direction and control and that this U.S. Public Land Survey Monument Record is correct and complete to the best of my knowledge and belief.



Index No.

5-9

Thomas A. Radenz Signature 1/8/2002 Date