

U.S. PUBLIC LAND SURVEY MONUMENT RECORD

NOTE: This form is intended and designed to fulfill all requirements of Wisconsin Administrative Code, Chapter A-E 5.02, U.S. Public Land Survey Monument Record (3) (a) (b) (c) (d) (e) (f) (g) (h) (i). An additional sheet may be added if necessary to conform with said requirements.

(a) Corner location: Township 34 North
 Range 06 East
 Town/City/Village BRADLEY
 County LINCOLN

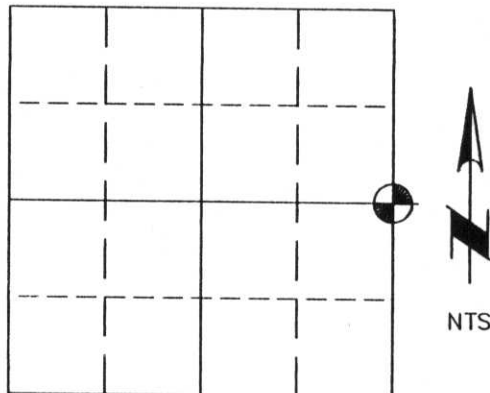
(NAD 83 (91))

NORTHING: 203653.215

EASTING: 386137.882

LAT: 45° 24' 10.641" N

LONG: 89° 42' 47.996" W



Section 27

(b) (f) (g) (h) Description of monument found at this corner and if it was accepted, state all evidence (material, testimonial, occupational, plats, records, other monuments) used as a basis for accepting. If not accepting or if nothing was found, state evidence as a basis for establishing location. If reestablished through lost corner proportionate methods, indicate all monuments, distances and directions used to establish.

1854 Original surveyor set wood post at this corner with bearing trees as follow:

SPRUCE 11 S60°E 24 LINKS
 SPRUCE 9 S68°W 22 LINKS

1998 Kim Pritzlaff, RLS, found that all original evidence of corner had been obliterated.

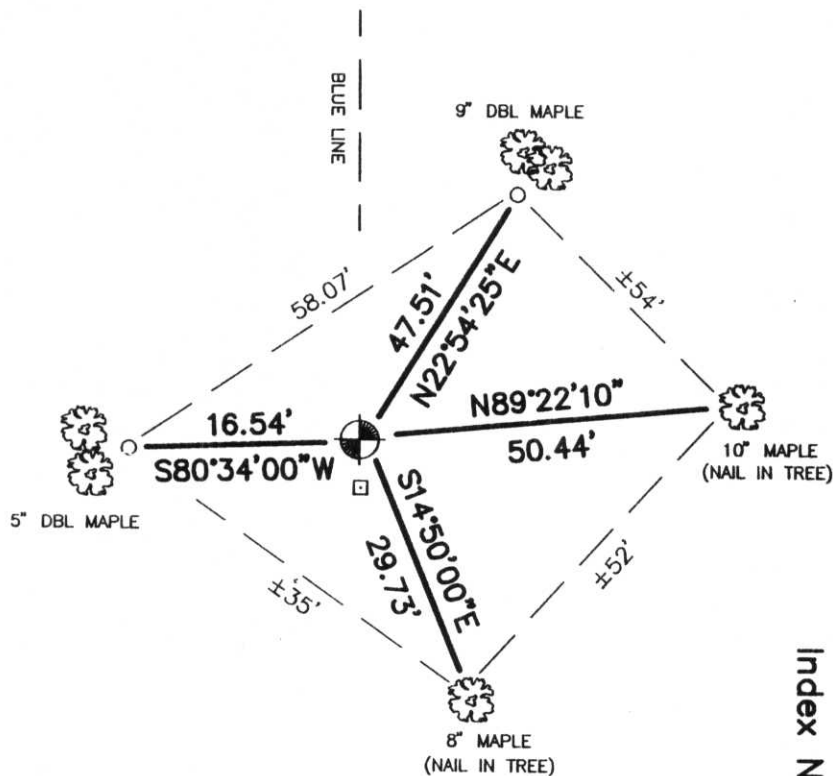
A 5" squared wood post was found scribed, painted, and set in a pile of rocks. A blue line was also painted north to the NE corner of the section. This location was accepted and a Berntsen monument put in place with ties as follow:

(c) (d) (e) Plan view of corner with ties to at least 4 witness monuments. If in disagreement with previously established corner, show the distance between the two corners and also indicate the ties to the disputed corner.

 SET BERNTSEN ALUMINUM MONUMENT WITH CAP STAMPED FOR CORNER

SET 1"x 30" IRON ROD WITH ALUMINUM CAP

SET SIGN POST



I, Kim H Pritzlaff

(type or print name) certify that the corner location shown on this record was determined by me or under my direction and control and that this U. S. Public Land Survey Monument Record is correct and complete to the best of my knowledge and belief.

Kim H Pritzlaff 11/25/98
 Signature Date

RECEIVED AT LINCOLN COUNTY
 COURTHOUSE THIS 30th DAY
 OF Nov. 19 98
Pat Priebe
 LAND INFORMATION OFFICE

Index No. 5-17