

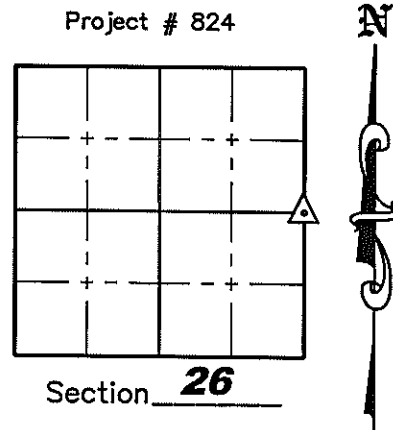
U.S. PUBLIC LAND SURVEY MONUMENT RECORD

NOTE: This form is intended and designed to fulfill all requirements of Wisconsin Administrative Code, Chapter A-E 7 .08 U.S. Public Land Survey Monument Record (3)(a)(b)(c)(d)(e)(f)(g)(h)(i). An additional sheet may be added if necessary to conform with said requirements.

(a) Corner location: Township 34 North
Range 6 East

Town of Bradley

County of Lincoln



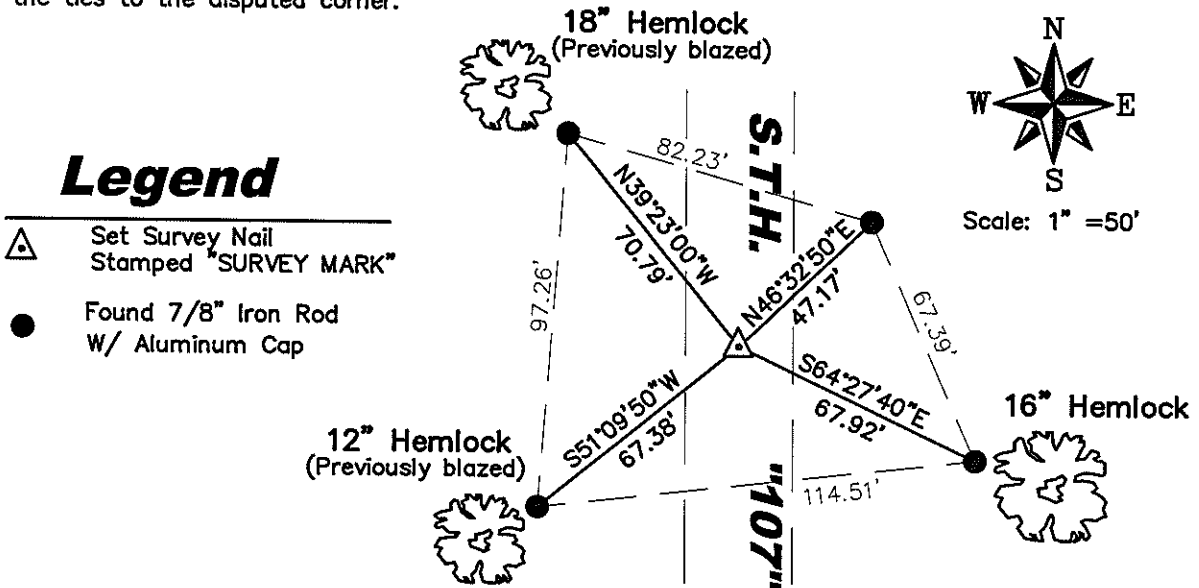
(b)(f)(g)(h) Description of monument found at this corner and if it was accepted, state all evidence (material, testimonial, occupation, plats, records, other monuments) used as a basis for accepting. If not accepted or if nothing was found, state evidence used as a basis for establishing location. If reestablished through lost corner proportionate methods, indicate all monuments, distances and directions used to establish. Indicate type of monument found or set and sign post.

1854 - Original Surveyor set wood post at this corner.

1998 - Kim Pritzlaff, R.L.S., found that all original evidence of corner had been obliterated. Two blazed trees were found on the West side of the road which faced the intersection of the centerline of State Highway "107" and a fence line to the East. After excavation of the road, nothing was found, so the intersection point was monumented as the best available evidence. He set a Bernsten aluminum capped monument and four witness monuments.

2008 - Jonathan W. Dulin, found the four witness monuments from Kim Pritzlaff and set a Survey nail stamped "SURVEY MARK" at the corner location in the centerline of State Highway "107".

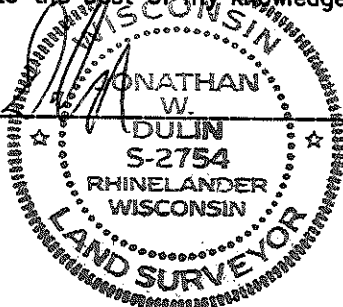
(c)(d)(e) Plan view of corner with ties to at least 4 witness monuments. If in disagreement with previously established corner, show the distances between the two corners and also indicate the ties to the disputed corner.



(i) I, Jonathan W. Dulin, certify that the corner location on this record was determined by me under my direction and control and that this U.S. Public Land Survey Monument is correct and complete to the best of my knowledge and belief.

Signature

8/7/2008 Date



RECEIVED BY LINCOLN COUNTY
SURVEYOR THIS 28TH DAY
OF October 20 08
 COUNTY SURVEYOR

