

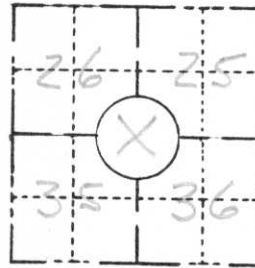
FIELD SURVEY NOTES

PRESERVATION OF LANDMARKS

(Pursuant to Section 59.635(7) Wisconsin Statutes

Wisconsin Department of Transportation
E-D-707-87

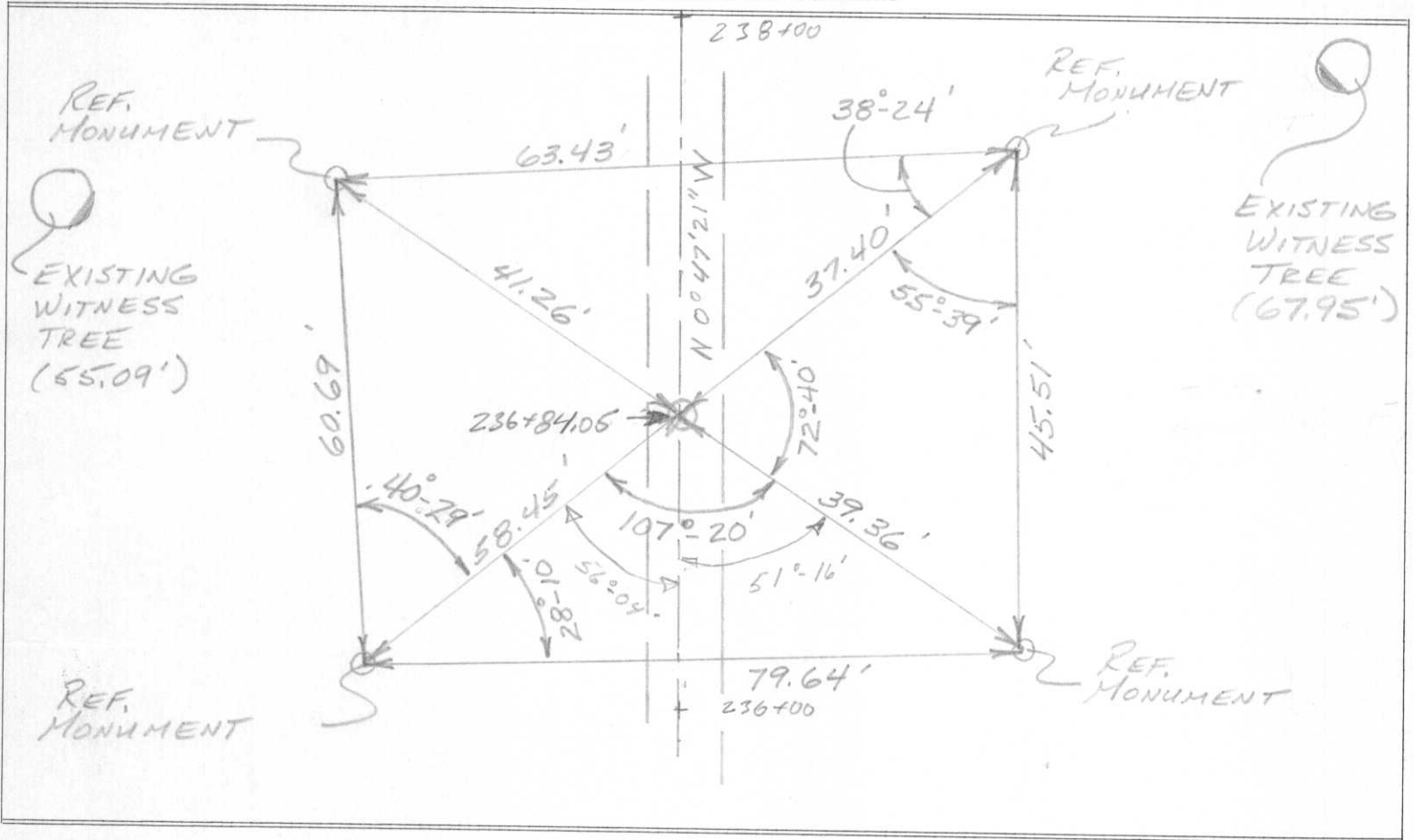
COUNTY <i>LINCOLN</i>		
TOWN <i>BRADLEY</i>		
HIGHWAY <i>S.T.H. 107</i>		
SECTION <i>25, 26, 35, 36</i>	TOWNSHIP <i>T 34N</i>	RANGE <i>R 6E</i>
TYPE OF LANDMARK <i>SECTION CORNER</i>		



LOCATION SKETCH
(Location of landmark indicated by "x")



This space for copy of field notes or ties to the above described landmarks



FILED UNDER PROJECT NUMBER <i>9305-3-70</i>	
SHC DISTRICT OFFICE NUMBER <i>7</i>	CITY COUNTY <i>RHINELANDER ONEIDA</i>
LOCATED OR ESTABLISHED BY NAME <i>Am. News 5-666</i> TITLE <i>Dist. Const. Engr.</i> DATE <i>9-8-75</i>	

COUNTY CLERK'S OFFICE COUNTY OF <i>Lincoln</i> WISCONSIN } SS	
DATE RECEIVED FOR RECORD <i>10/29/75</i>	DATE COPY SENT TO COUNTY SURVEYOR <i>10/29/75</i>
SIGNATURE OF COUNTY CLERK <i>Ken Blalock</i>	

U-21