

U.S. PUBLIC LAND SURVEY MONUMENT RECORD

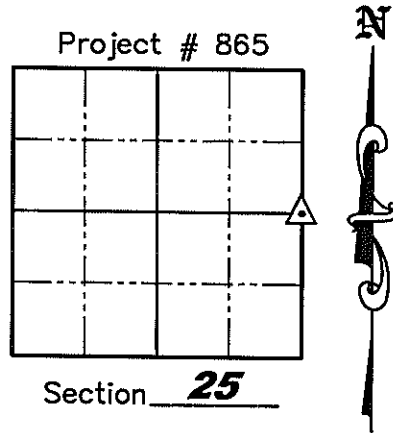
NOTE: This form is intended and designed to fulfill all requirements of Wisconsin Administrative Code, Chapter A-E 7.08 U.S. Public Land Survey Monument Record (3)(a)(b)(c)(d)(e)(f)(g)(h)(i). An additional sheet may be added if necessary to conform with said requirements.

(a) Corner location: Township 34 North

Range 6 East

Town of Bradley

County of Lincoln



(b)(f)(g)(h) Description of monument found at this corner and if it was accepted, state all evidence (material, testimonial, occupation, plats, records, other monuments) used as a basis for accepting. If not accepted or if nothing was found, state evidence used as a basis for establishing location. If reestablished through lost corner proportionate methods, indicate all monuments, distances and directions used to establish. Indicate type of monument found or set and sign post.

August 1851 – James M. Marsh set original 1/4 Section post, BT's: 14" Tamarack S10°E, 64 links; 12" Tamarack S85°W, 24 links; 12" Tamarack N01°W, 20 links; 12" Tamarack N31°E, 11 links.

September 24, 1976 – Leonard L. Lampert set a Berntsen Monument on line and equidistance from the Northeast and Southeast corner of Section 25. He also established three new bearing trees: 6" Spruce, NWly, 57.20'; 6" Spruce, Wly, 45.87'; 10" White Birch, SWly, 62.95'.

July 12, 1977 – Owens-Illinois (W.H. Stuth) shows a iron pipe or cap by others on Plat of Survey prepared by W.H. Stuth on March 6, 1987.

October 24, 2008 – Jonathan W. Dulin visited corner and found that the East one-quarter corner and all bearing trees were missing. We reestablished the corner on line with and equidistance from the Northeast corner and Southeast corner of Section 25 and set a survey nail stamped "SURVEY MARK". We set new witness corners as shown on Sheet 2 hereof.

(c)(d)(e) Plan view of corner with ties to at least 4 witness monuments. If in disagreement with previously established corner, show the distances between the two corners and also indicate the ties to the disputed corner.

See Sheet 2 hereof

(i) I, Jonathan W. Dulin, certify that the corner location on this record was determined by me under my direction and control and that this U.S. Public Land Survey Monument is correct and complete to the best of my knowledge and belief.

Jonathan W. Dulin
Signature

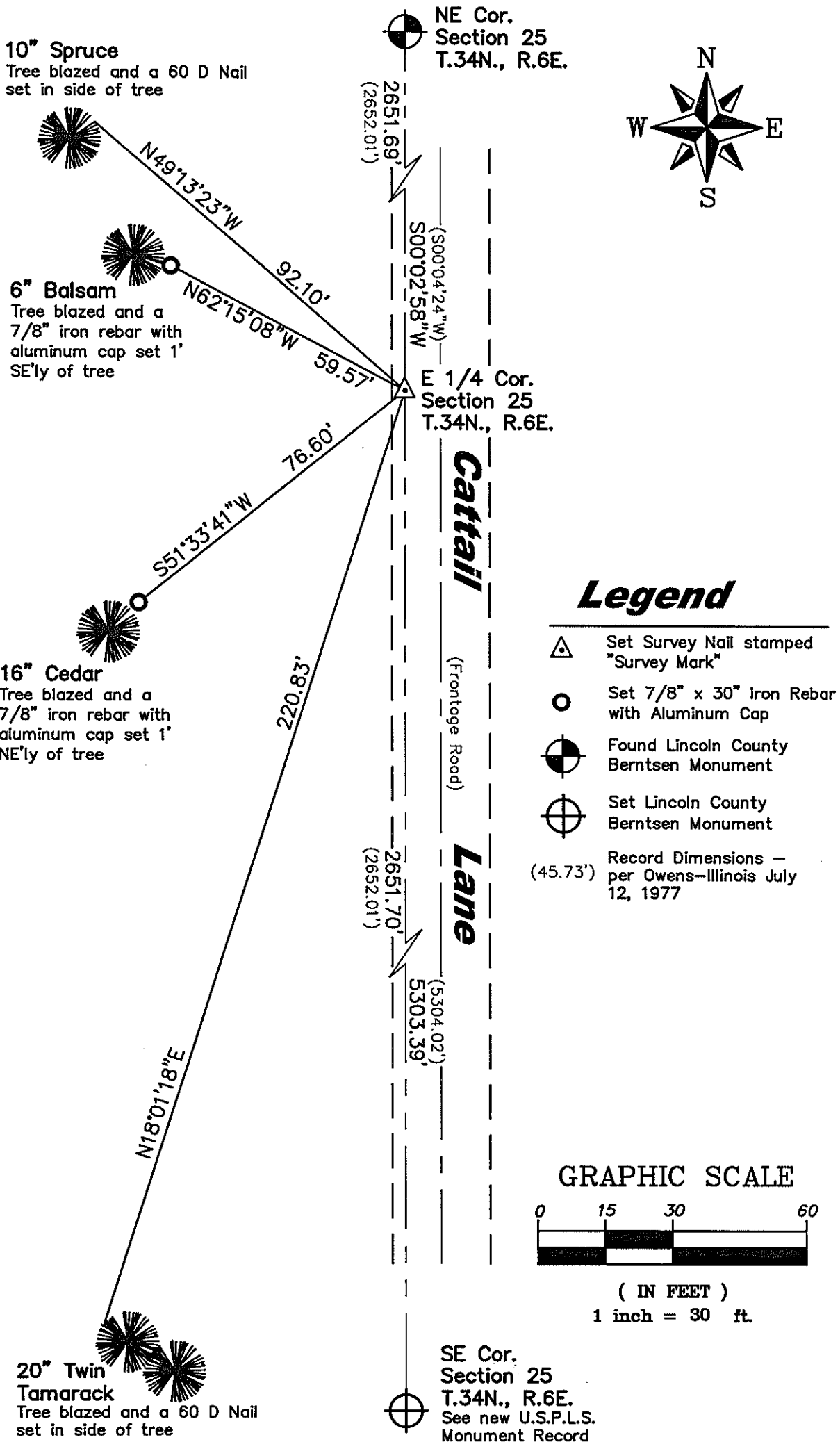


10/29/2008
Date

RECEIVED BY LINCOLN COUNTY
SURVEYOR THIS 28TH DAY
OF October 2008
Tommy Dahl
COUNTY SURVEYOR

Index No. S-25

U.S. PUBLIC LAND SURVEY MONUMENT RECORD



LEON LAMPERT
CONSULTING ENGINEER
220 Greenbriar Ave. - Park Ridge
Stevens Point, Wisconsin 54481

CERTIFIED LAND CORNER RESTORATION

Index No. S-1

State of Wisconsin }
County of } ss.

I do hereby certify that on the day of, 19....., I found evidence of the corner of Township....., North, Range Fourth, Principal Meridian, as described hereon; and that from this evidence I established a new monument and accessories as described hereon to perpetuate the original location of this corner.

Resident witnesses:

.....

.....

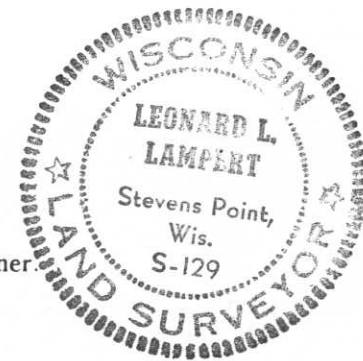
.....

History of original corner establishment:

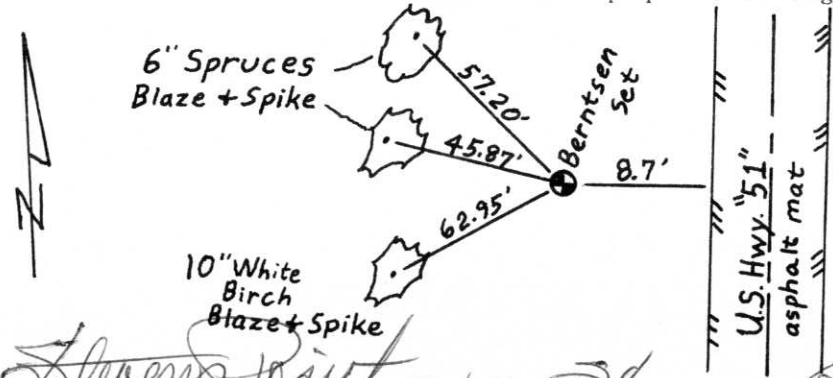
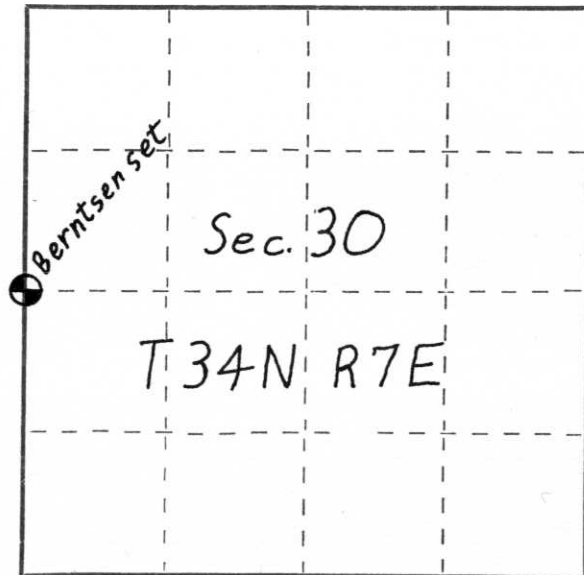
No record of resurvey or of original survey corner were found for this corner.

Description of corner evidence found:

This corner was set on line and equidistant from the NW and SW corners of the section. Berntsen Monument set. no other evidence found.



Description of monument and accessories I established to perpetuate the original location of this corner.



Dated at Stevens Point, Wis, this 24 day of September, 1976.

Signature Leonard Lampert Title Consulting Engineer Registration No. S-129
(County Surveyor, Registered Land Surveyor, or other duly authorized official)

Office of Register of Deeds, County of, I hereby certify that the within instrument was filed in this office for record on the day of, 19..... at o'clock M.

(Register of Deeds)

By..... Deputy

○ = Corner monument restored.