



Stock No. 26273

# U.S. PUBLIC LAND SURVEY MONUMENT RECORD

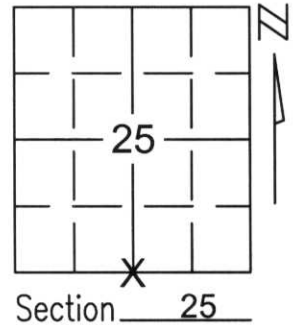
Note: This form is intended and designed to fulfill all requirements of Wisconsin Administrative Code, Chapter A-E 5.02, U.S. Public Land Survey Monument Record (3)(a)(b)(c)(d)(e)(f)(g)(h)(i). An additional sheet may be added if necessary to conform with said requirements.

(a) Corner location: Township 34 North

Range 6 East

Town/City/Village BRADLEY

County LINCOLN

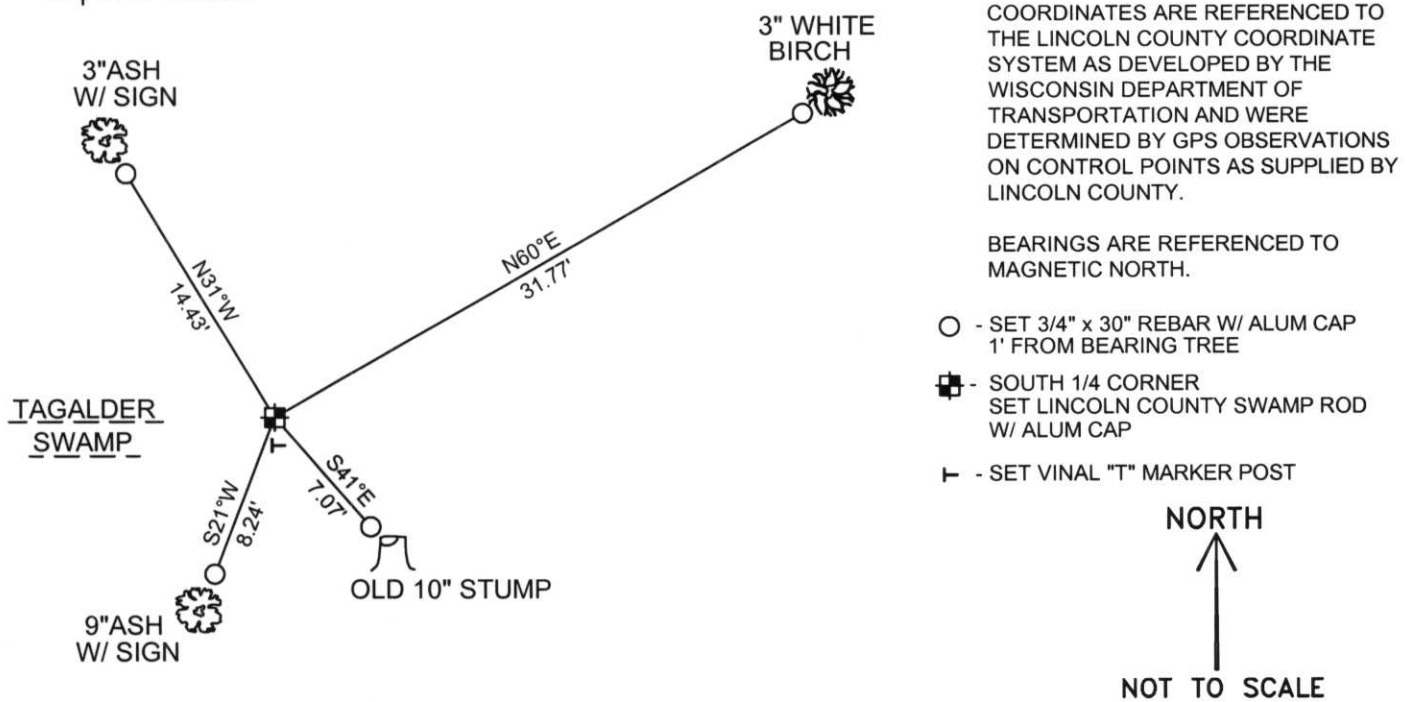


(b)(f)(g)(h) Description of monument found at this corner and if it was accepted, state all evidence (material, testimonial, occupational, plats, records, other monuments) used as a basis for accepting. If not accepted or if nothing was found, state evidence used as basis for establishing location. If reestablished through lost corner proportionate methods, indicate all monuments, distances and directions used to establish.

WE FOUND A 1" IRON PIPE AND SCRIBED GUARD POST FROM A 1977 OWENS-ILLINOIS SURVEY. THE CORNER MATCHES ADJACENT CORNERS IN SECTION 25. WE ACCEPTED THE CORNER LOCATION AND REPLACED THE 1" IRON PIPE WITH A 60" LINCOLN COUNTY SWAMP ROD AND RETIED CORNER.

RECEIVED AT LINCOLN COUNTY COURTHOUSE THIS 9<sup>TH</sup> DAY OF January 20 02  
*Tony Walker*  
LAND INFORMATION OFFICE

(c)(d)(e) Plan view of corner with ties to at least 4 witness monuments. If in disagreement with previously established corner, show the distances between the two corners and also indicate the ties to the disputed corner.



COORDINATES ARE REFERENCED TO THE LINCOLN COUNTY COORDINATE SYSTEM AS DEVELOPED BY THE WISCONSIN DEPARTMENT OF TRANSPORTATION AND WERE DETERMINED BY GPS OBSERVATIONS ON CONTROL POINTS AS SUPPLIED BY LINCOLN COUNTY.

BEARINGS ARE REFERENCED TO MAGNETIC NORTH.

- - SET 3/4" x 30" REBAR W/ ALUM CAP 1' FROM BEARING TREE
- ⊠ - SOUTH 1/4 CORNER SET LINCOLN COUNTY SWAMP ROD W/ ALUM CAP
- ┆ - SET VINAL "T" MARKER POST

NORTH  
↑  
NOT TO SCALE

(i) I, Thomas A. Radenz, RLS certify that the corner location on this record was determined by me or under my direction and control and that this U.S. Public Land Survey Monument Record is correct and complete to the best of my knowledge and belief.

*Thomas A. Radenz*  
Signature 1/8/2002  
Date



Index No. ....

U-23