

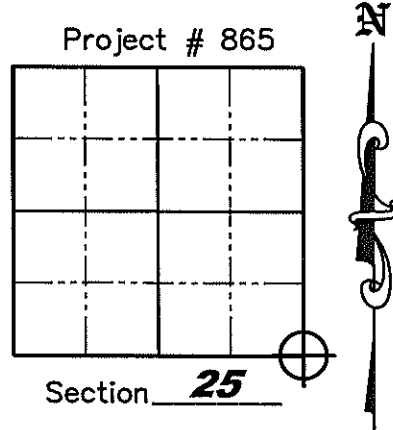
# U.S. PUBLIC LAND SURVEY MONUMENT RECORD

NOTE: This form is intended and designed to fulfill all requirements of Wisconsin Administrative Code, Chapter A-E 7.08 U.S. Public Land Survey Monument Record (3)(a)(b)(c)(d)(e)(f)(g)(h)(i). An additional sheet may be added if necessary to conform with said requirements.

(a) Corner location: Township 34 North  
 Range 6 East/West

Town of Bradley

County of Lincoln



(b)(f)(g)(h) Description of monument found at this corner and if it was accepted, state all evidence (material, testimonial, occupation, plats, records, other monuments) used as a basis for accepting. If not accepted or if nothing was found, state evidence used as a basis for establishing location. If reestablished through lost corner proportionate methods, indicate all monuments, distances and directions used to establish. Indicate type of monument found or set and sign post.

August 1851 – James M. Marsh set original corner post, BT's: 10" Tamarack S32E, 14 links; 10" Tamarack S14°W, 20 links; 8" Tamarack N45°W, 16 links; 9" Tamarack N71E, 17 links.

December 1972 – Robert H. Winat found no evidence of original corners or accessories set by James Marsh in August 1851. Although measurements 1/2 mile North and South indicates control within 13 feet of original distances along range line. Old maple bearing tree faces to corner location. He used information on corner location relative to structure at Little Pine Creek in 1921 survey by G.C. Miles to fix location of corner in centerline of U.S. Highway "51". Original calls for creek are 9 feet shorter North-South and 5 feet longer East-West. He set Berntsen Aluminum Monument in centerline of U.S. Highway "51" and 554 feet North of centerline box culvert over Little Pine Creek and made new bearing trees as follows: 15" Spruce, N33°W, 85.7'; 6" White Birch, S87°W, 59.5'; 17" Spruce, S73E, 93.8'.

July 12, 1977 – Owens-Illinois (W.H. Stuth) shows a iron pipe or cap by others on Plat of Survey prepared by W.H. Stuth on March 6, 1987. They also set a iron pipe 50 feet West of corner.

October 24, 2008 – Jonathan W. Dulin visited corner and found a nail in place. We also found four 3" capped aluminum Department of Transportation monuments with the distance to the corner stamped on the cap. We replaced the found nail with a Lincoln County Berntsen Monument and witnessed the corner as shown on Sheet 2 hereof.

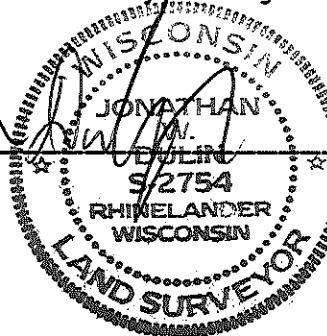
(c)(d)(e) Plan view of corner with ties to at least 4 witness monuments. If in disagreement with previously established corner, show the distances between the two corners and also indicate the ties to the disputed corner.

**See Sheet 2 hereof**

RECEIVED BY LINCOLN COUNTY  
 SURVEYOR THIS 26<sup>TH</sup> DAY  
 OF October 20 08  
Jonathan W. Dulin  
 COUNTY SURVEYOR

(i) I, Jonathan W. Dulin, certify that the corner location on this record was determined by me under my direction and control and that this U.S. Public Land Survey Monument is correct and complete to the best of my knowledge and belief.

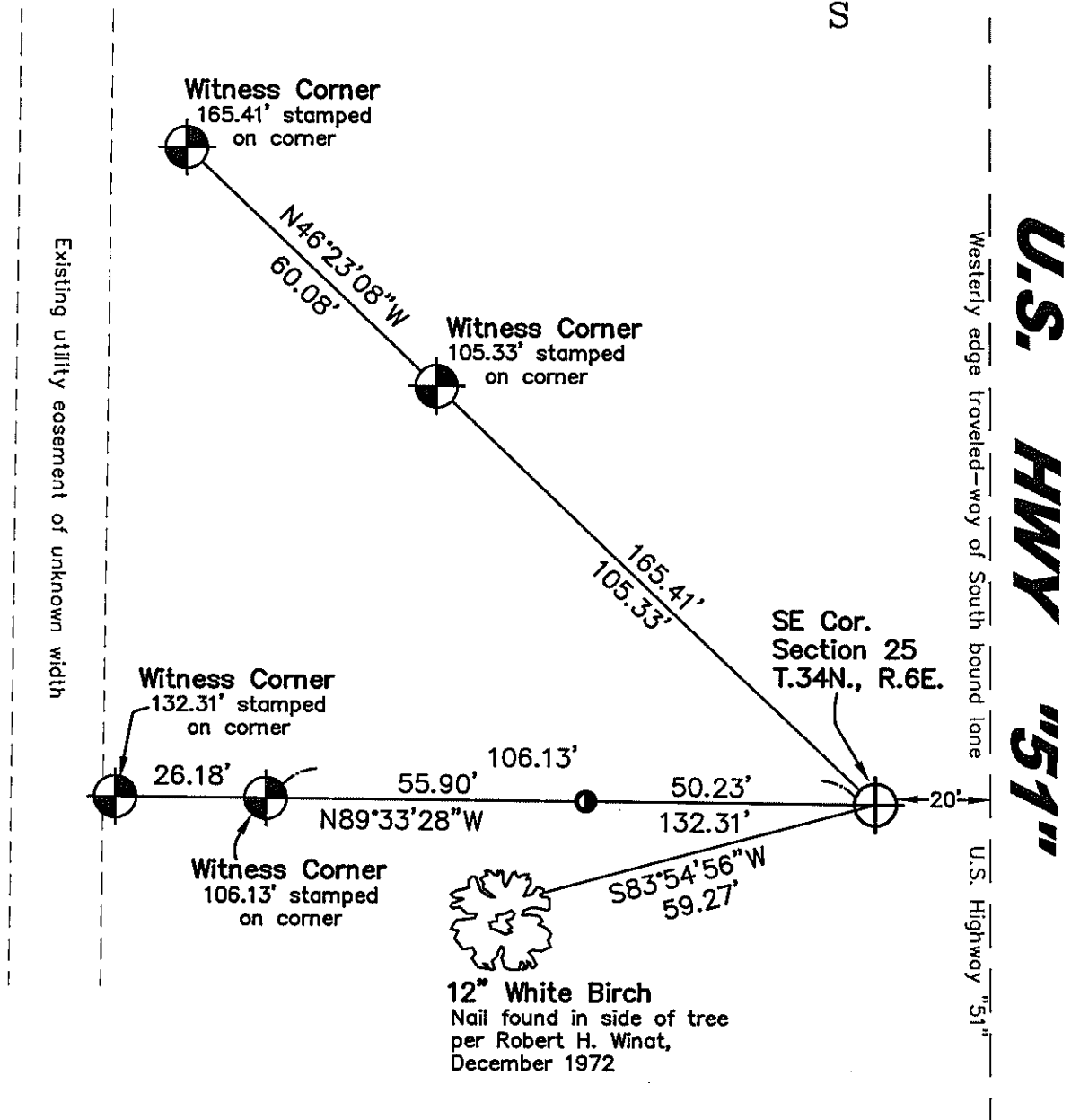
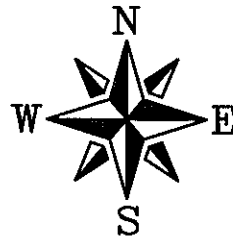
Signature Jonathan W. Dulin



Date 10/27/2008

Index No. U-25

# U.S. PUBLIC LAND SURVEY MONUMENT RECORD



## Legend

- Found 3" Capped DOT Aluminum Monument Stamped with Distance to Corner and a White "T" Post next to Monument
- Set Lincoln County Berntsen Monument
- Found 1-1/4" Iron Pipe

## GRAPHIC SCALE



( IN FEET )  
1 inch = 30 ft.

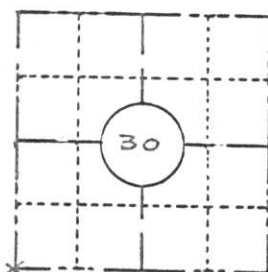
U-25  
34-6

159.

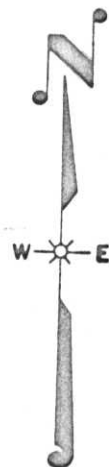
FIELD SURVEY NOTES  
PRESERVATION OF LANDMARKS  
(Pursuant to Section 59.635(7) Wisconsin Statutes)

Wisconsin Department of Transportation  
E-D-707-87

COUNTY <i>Lincoln</i>		
TOWN <i>SKANAWAN</i>		
HIGHWAY <i>U.S.H. 51 FREEWAY</i>		
SECTION <i>30</i>	TOWNSHIP <i>T34N</i>	RANGE <i>R7E</i>
TYPE OF LANDMARK <i>SW. SECTION CORNER</i>		



LOCATION SKETCH  
(Location of landmark indicated by "x")

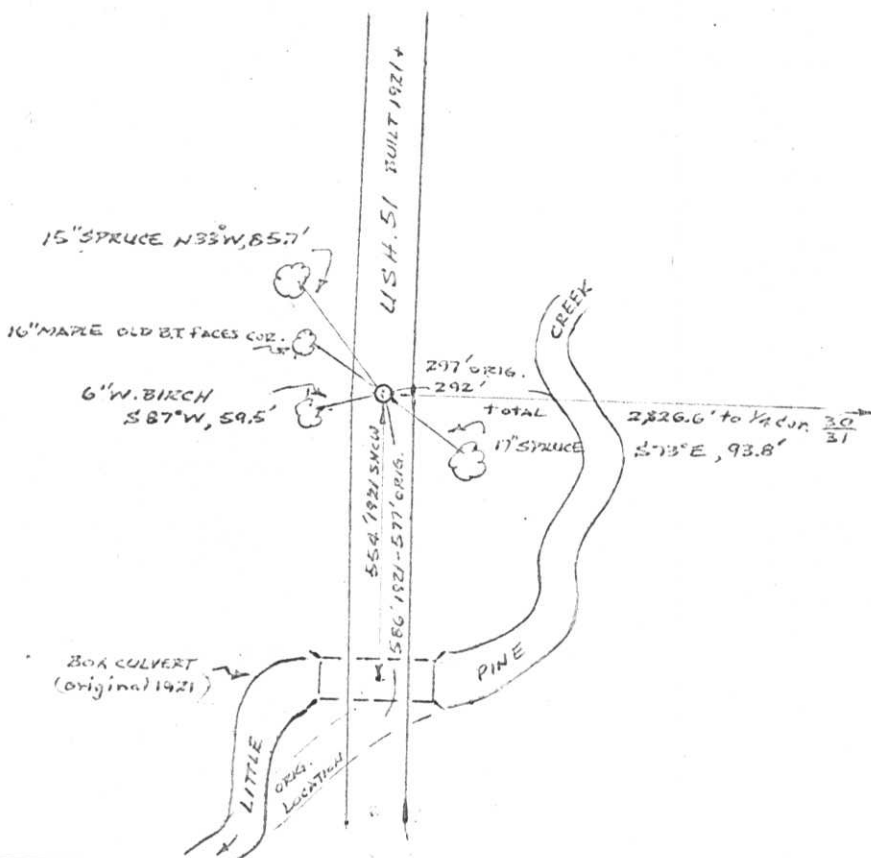


This space for copy of field notes or ties to the above described landmarks

No evidence of original corners or accessories set by James Marsh in Aug. 1851 was found. Although measurements  $\frac{1}{2}$  mi. north & south indicate control within 13' of original distances along range line. old Maple B.T. faces to corner location.

Used information on corner location relative to structure at Little Pine Creek in 1921 SHOW survey by G.C. Miles to fix location of corner in EUSH 51. Original calls for creek are 9' shorter (N-S) & 5' longer E-W.

Set Berntsen Aluminum monument in E of U.S.H. 51 and 554' north of E Box CULVERT over Lt. Pine Creek and made new Bearing Trees.



FILED UNDER PROJECT <i>U.S.H. 51 FREEWAY</i>		
NUMBER <i>ID. 1173-0-02</i>		
SHC DISTRICT OFFICE NUMBER <i>7</i>	CITY	COUNTY <i>Lincoln</i>
LOCATED OR ESTABLISHED BY <i>NORTH WOODS SURVEYORS, INC.</i>		
NAME <i>Robert H. Wink</i>		
TITLE <i>Land Surveyor S-1040</i> DATE <i>Dec. 1972</i>		

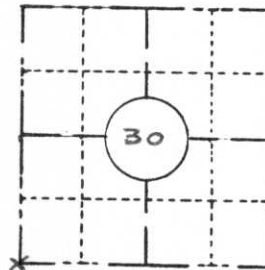
COUNTY CLERK'S OFFICE	
COUNTY OF <i>Lincoln</i>	WISCONSIN } SS
DATE RECEIVED FOR RECORD <i>1/26/73</i>	DATE COPY SENT TO COUNTY SURVEYOR <i>L</i>
SIGNATURE OF COUNTY CLERK <i>Ken Oldenburg</i>	

1-0

**PRESERVATION OF LANDMARKS**

(Pursuant to Section 59.635(7) Wisconsin Statutes)

COUNTY <i>Lincoln</i>		
TOWN <i>SKANAWAN</i>		
HIGHWAY <i>U.S.H. 51 FREEWAY</i>		
SECTION <i>30</i>	TOWNSHIP <i>T34N</i>	RANGE <i>R7E</i>
TYPE OF LANDMARK <i>S.W. SECTION CORNER</i>		



**LOCATION SKETCH**  
(Location of landmark indicated by "x")

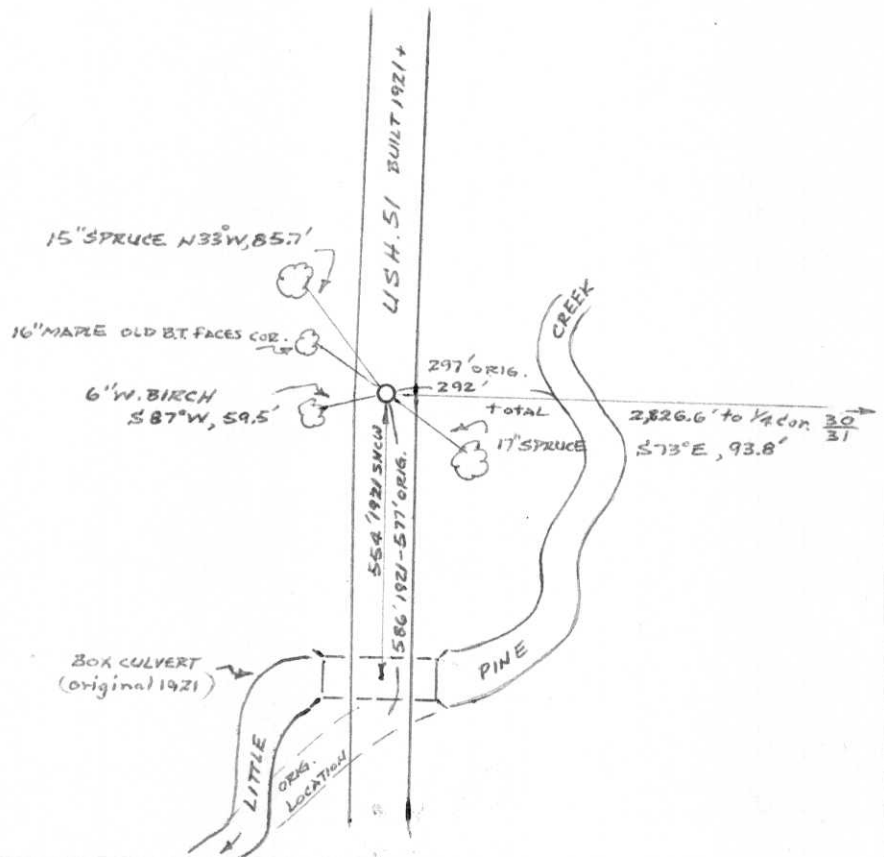


This space for copy of field notes or ties to the above described landmarks

No evidence of original corners or accessories set by James Marsh in Aug. 1851 was found. Although measurements 1/2 mi. north & south indicate control within 13' of original distances along range line. Old Maple B.T. faces to corner location.

Used information on corner location relative to structure at Little Pine Creek in 1921 SHOW survey by G.C. Miles to fix location of corner in E U.S.H. 51. Original calls for creek are 9' shorter (N-S) & 5' longer E-W.

Set Berntsen aluminum monument in E of U.S.H. 51 and 554' north of E Box CULVERT over Lt. Pine Creek and made new Bearing Trees.



FILED UNDER PROJECT <i>U.S.H. 51 FREEWAY</i>	
NUMBER <i>ID. 1173-0-02</i>	
SHC DISTRICT OFFICE NUMBER <i>7</i>	CITY COUNTY <i>Lincoln</i>
LOCATED OR ESTABLISHED BY <i>NORTH WOODS SURVEYORS, INC.</i>	
NAME <i>Robert H. Winkat</i>	
TITLE <i>Land Surveyor S-1040</i> DATE <i>Dec. 1972</i>	

COUNTY CLERK'S OFFICE	
COUNTY OF <i>Lincoln</i> WISCONSIN } SS	
DATE RECEIVED FOR RECORD <i>1/26/73</i>	DATE COPY SENT TO COUNTY SURVEYOR <i>L</i>
SIGNATURE OF COUNTY CLERK <i>Ken Oldenburg</i>	

10