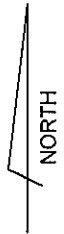
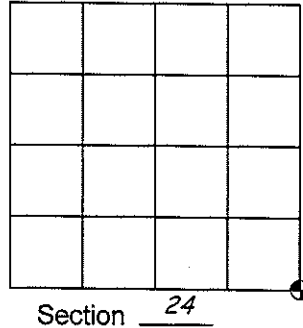


U.S. PUBLIC LAND SURVEY MONUMENT RECORD

Note: This form intended and designed to fulfill all requirements of Wisconsin Administrative Code, Chapter A-E 5.02, U.S. Public Land Survey Monument Record (3)(a)(b)(c)(d)(e)(f)(g)(h)(i). An additional sheet may be added if necessary to conform with said requirements.

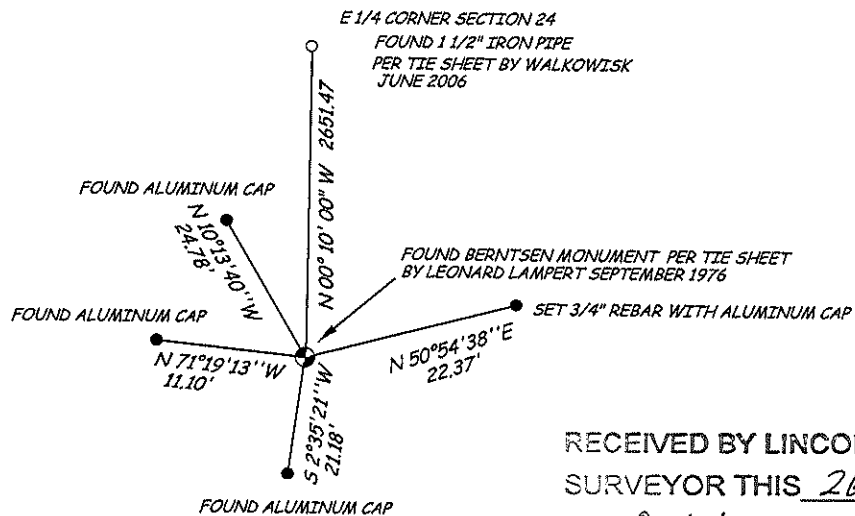
(a) Corner Location: Township 34 North
 Range 6 East
 Town / City / Village TN. BRADLEY
 County LINCOLN



(b)(f)(g)(h) Description of monument found at this corner and if it was accepted, state all evidence (material, testimonial, occupational, plats, records, other monuments) used as a basis for accepting. If not accepted or if nothing was found, state evidence used as basis for establishing location. If reestablishing through lost corner proportionate methods, indicate all monuments, distances and directions used to establish.

FOUND BERNTSEN MONUMENT +/- 30 FEET WEST OF WEST EOP OF CATTAIL LANE. CORNER FALLS IN A SWAMP

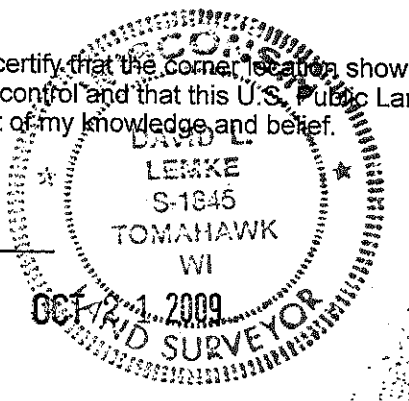
(c)(d)(e) Plan view of corner with ties to at least 4 witness monuments. If in disagreement with previously established corner, show the distances between the two corners and also indicate the ties to the disputed corner.



RECEIVED BY LINCOLN COUNTY
 SURVEYOR THIS 26TH DAY
 OF October 2009
Tom Decker
 COUNTY SURVEYOR

(i) I, David L. Lemke, RLS - 1845, hereby certify that the corner location shown hereon was determined by me under my direction and control and that this U.S. Public Land Survey Monument Record is correct and complete to the best of my knowledge and belief.

David L. Lemke



Index No. Q-25

LEONARD L. LAMPERT,
CONSULTING ENGINEER
220 Greenbriar Ave. - Park Ridge
Stevens Point, Wisconsin 54481

CERTIFIED LAND CORNER RESTORATION

Index No. Q-1

State of Wisconsin }
County of } ss.

I....., do hereby
certify that on the.....day
of....., 19....., I found
evidence of the.....
corner of.....
Township....., North, Range
....., Fourth, Principal Meridian,
as described hereon; and that from this evidence
I established a new monument and accessories
as described hereon to perpetuate the original
location of this corner.

Resident witnesses:

.....

.....

.....

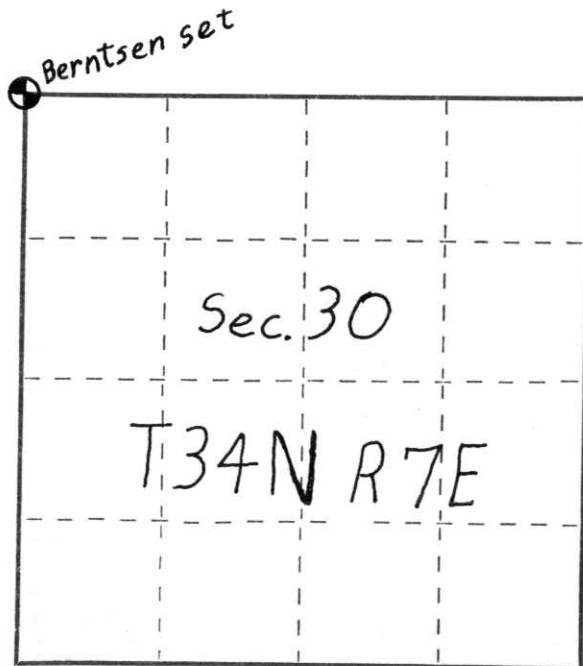
History of original corner establishment:

This corner was reestablished according to resurvey notes
found for the north lune of the section.

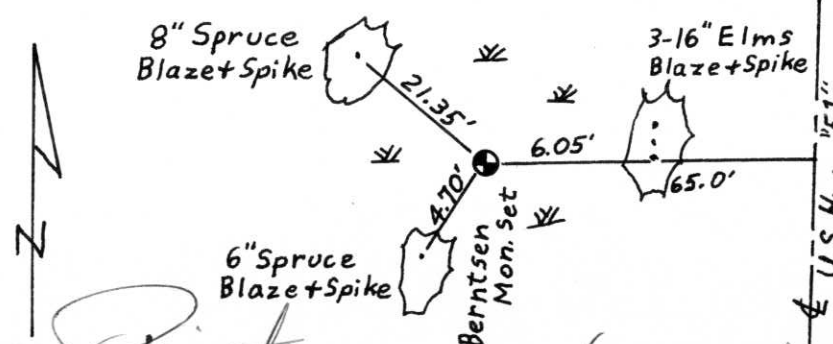
Description of corner evidence found:

This corner was set according to a resurvey of the north line of
the section. A Berntsen monument was set at the corresponding
distance. No other evidence was found for its location in the field

Description of monument and accessories I established to perpetuate the original location of this corner.



○ = Corner monument restored.



Dated at Stevens Point, Wis, this 27 day of September, 1976.

Signature Leonard Lampert Title Consulting Engineer Registration No. 5-129
(County Surveyor, Registered Land Surveyor, or other duly authorized official)

Office of Register of Deeds, County of....., I hereby certify that the within
instrument was filed in this office for record on the.....day of....., 19.....
at.....o'clock..... M.

(Register of Deeds)

By.....Deputy