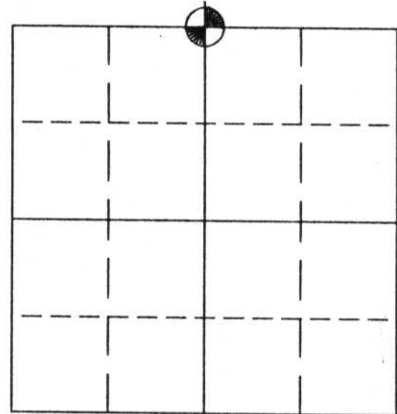


U.S. PUBLIC LAND SURVEY MONUMENT RECORD

NOTE: This form is intended and designed to fulfill all requirements of Wisconsin Administrative Code, Chapter A-E 5.02, U.S. Public Land Survey Monument Record (3) (a) (b) (c) (d) (e) (f) (g) (h) (i). An additional sheet may be added if necessary to conform with said requirements.

(a) Corner location: Township 34 North
 Range 06 East
 Town/City/Village BRADLEY
 County LINCOLN



NTS

(NAD 83 (91))

NORTHING: 206284.107
 EASTING: 388571.328

LAT: 45° 24' 36.607" N
 LONG: 89° 42' 13.879" W

Section 26

S-23




(b) (f) (g) (h) Description of monument found at this corner and if it was accepted, state all evidence (material, testimonial, occupational, plats, records, other monuments) used as a basis for accepting. If not accepting or if nothing was found, state evidence as a basis for establishing location. If reestablished through lost corner proportionate methods, indicate all monuments, distances and directions used to establish.

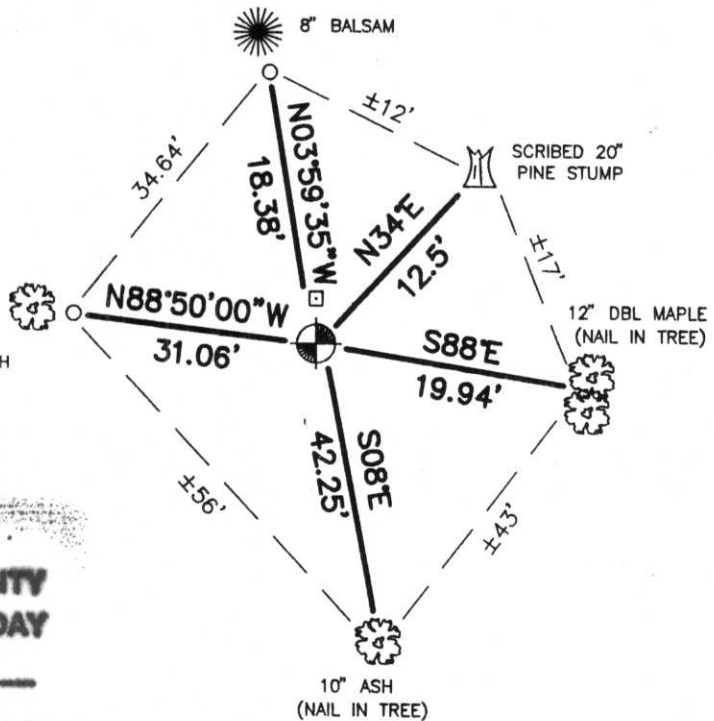
1854 Original surveyor set wood post at this corner with bearing trees as follow:

- Pine 12 N43°E 19 links
- Soft Maple 12 S45°W 21 links

1998 Kim Pritzlaff, RLS, found a 2" iron pipe in place of a 5" squared and scribed wood post which was 14' south of a fence. This location was also marked by an old scribed and rotting Pine stump, and fit the river call to the west by 1/2 chain. A Berntsen monument was set in place with ties as follow:

(c) (d) (e) Plan view of corner with ties to at least 4 witness monuments. If in disagreement with previously established corner, show the distance between the two corners and also indicate the ties to the disputed corner.

-  SET BERNTSEN ALUMINUM MONUMENT WITH CAP STAMPED FOR CORNER
-  SET 1" x 30" IRON ROD WITH ALUMINUM CAP
-  SET SIGN POST



**RECEIVED AT LINCOLN COUNTY
 COURTHOUSE THIS 30th DAY
 OF Nov. 19 98
Pat Priske
 LAND INFORMATION OFFICE**

I, Kim H Pritzlaff
 (type or print name) certify that the corner location shown on this record was determined by me or under my direction and control and that this U. S. Public Land Survey Monument Record is correct and complete to the best of my knowledge and belief.
Kim Pritzlaff 11/25/98
 Signature Date



Index No. A-19