

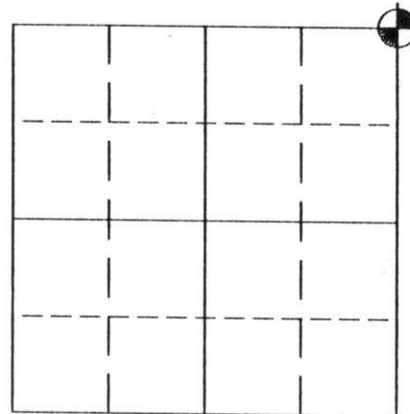
U.S. PUBLIC LAND SURVEY MONUMENT RECORD

NOTE: This form is intended and designed to fulfill all requirements of Wisconsin Administrative Code, Chapter A-E 5.02, U.S. Public Land Survey Monument Record (3) (a) (b) (c) (d) (e) (f) (g) (h) (i). An additional sheet may be added if necessary to conform with said requirements.

(a) Corner location: Township 34 North
 Range 06 East
 Town/City/Village BRADLEY
 County LINCOLN

(NAD 83 (91))

NORTHING: 206291.913
 EASTING: 386099.767
 LAT: 45° 24' 36.691" N
 LONG: 89° 42' 48.521" W



Section 27

(b) (f) (g) (h) Description of monument found at this corner and if it was accepted, state all evidence (material, testimonial, occupational, plats, records, other monuments) used as a basis for accepting. If not accepting or if nothing was found, state evidence as a basis for establishing location. If reestablished through lost corner proportionate methods, indicate all monuments, distances and directions used to establish.

1854 Original surveyor set wood post at this corner with bearing trees as follow:

- Tamarack 10 S62°W 28 links
- Tamarack 12 S67°E 24 links
- Tamarack 9 N60°E 23 links
- Tamarack 11 N10°W 21 links

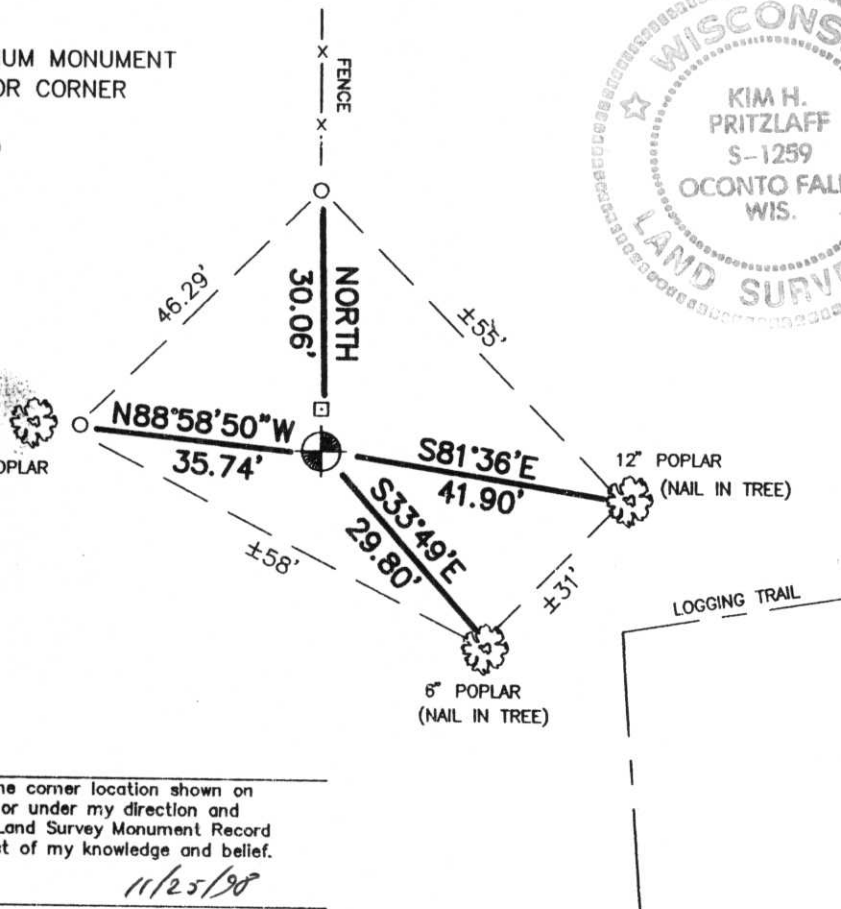
1998 Kim Pritzlaff, RLS, found that all original evidence of corner had been obliterated. However, a 5" squared wood post was found painted and set in a pile of rocks which fit in a fence line to the north and a blue line marked to the west and south. This location was accepted as best available evidence, and a berntsen monument was set with ties as follow:

(c) (d) (e) Plan view of corner with ties to at least 4 witness monuments. If in disagreement with previously established corner, show the distance between the two corners and also indicate the ties to the disputed corner.

- SET BERNTSEN ALUMINUM MONUMENT WITH CAP STAMPED FOR CORNER
- SET 1"x 30" IRON ROD WITH ALUMINUM CAP
- SET SIGN POST



RECEIVED AT LINCOLN COUNTY
 COURTHOUSE THIS 30th DAY
 OF Nov 19 98
Pat Priebe
 LAND INFORMATION OFFICE



I, Kim H Pritzlaff
 (type or print name) certify that the corner location shown on
 this record was determined by me or under my direction and
 control and that this U. S. Public Land Survey Monument Record
 is correct and complete to the best of my knowledge and belief.
Kim H Pritzlaff 11/25/98
 Signature Date

Index No. Q-17