

U.S. PUBLIC LAND SURVEY MONUMENT RECORD

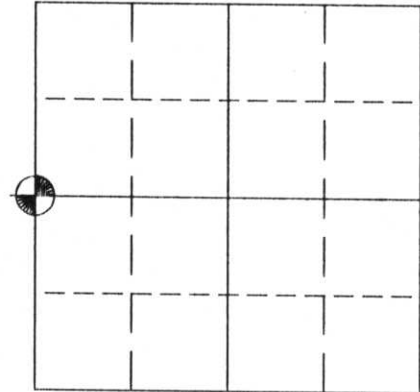
NOTE: This form is intended and designed to fulfill all requirements of Wisconsin Administrative Code, Chapter A-E 5.02, U.S. Public Land Survey Monument Record (3) (a) (b) (c) (d) (e) (f) (g) (h) (i). An additional sheet may be added if necessary to conform with said requirements.

(a) Corner location: Township 34 North
Range 06 East

Town/City/Village BRADLEY

County LINCOLN
(NAD 83 (91))

NORTHING: 208913.215
EASTING: 380811.016
LATITUDE: 45°25'02.576"N
LONGITUDE: 89°44'02.649"W



Section 22

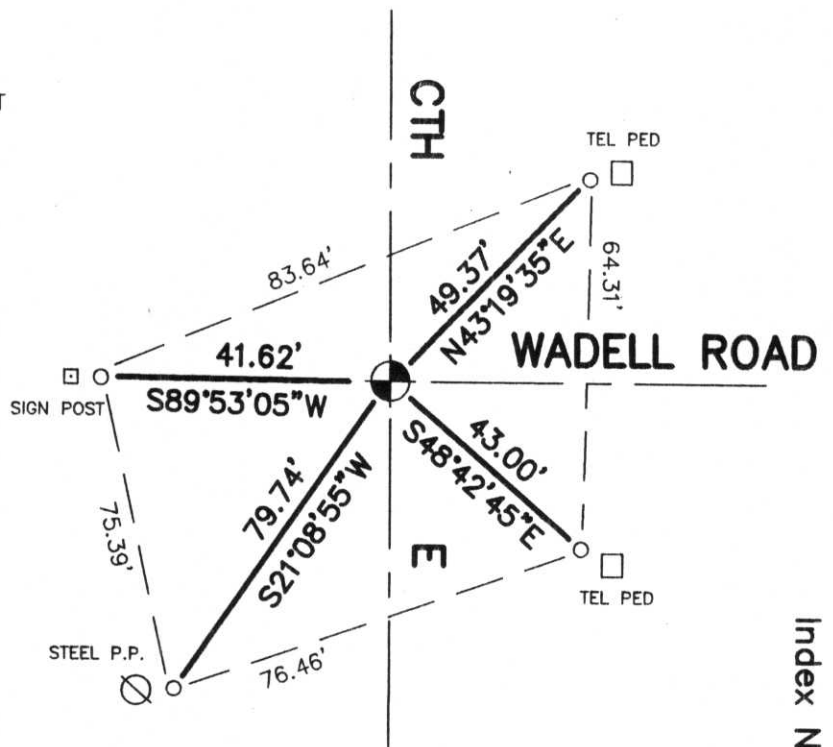
(b) (f) (g) (h) Description of monument found at this corner and if it was accepted, state all evidence (material, testimonial, occupational, plats, records, other monuments) used as a basis for accepting. If not accepting or if nothing was found, state evidence as a basis for establishing location. If reestablished through lost corner proportionate methods, indicate all monuments, distances and directions used to establish.

1854 Original surveyor set wood post at this corner location.

1998 Kim Pritzlaff, RLS, found the corner to be perpetuated by a CST nail which was located at the intersection of the centerlines of the two roads. Road excavation had obliterated any evidence of corner. This location was accepted as best available evidence, and ties were set as follow:

(c) (d) (e) Plan view of corner with ties to at least 4 witness monuments. If in disagreement with previously established corner, show the distance between the two corners and also indicate the ties to the disputed corner.

- SET BERNTSEN ALUMINUM MONUMENT WITH CAP STAMPED FOR CORNER
- SET 1" x 30" IRON ROD WITH ALUMINUM CAP
- SET SIGN POST



I, Kim H Pritzlaff
(type or print name) certify that the corner location shown on this record was determined by me or under my direction and control and that this U. S. Public Land Survey Monument Record is correct and complete to the best of my knowledge and belief.
Kim H Pritzlaff 11/25/98
Signature Date

RECEIVED AT LINCOLN COUNTY
COURTHOUSE THIS 30th DAY
OF Nov. 19 98
Pat Priber
LAND INFORMATION OFFICE

Index No. 0-13