

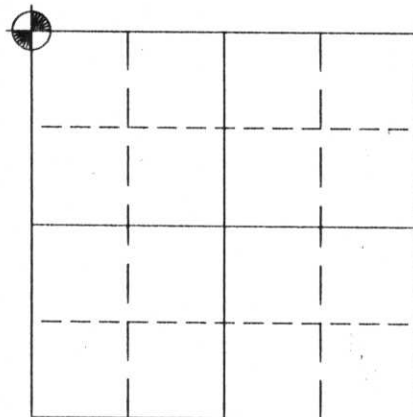
U.S. PUBLIC LAND SURVEY MONUMENT RECORD

NOTE: This form is intended and designed to fulfill all requirements of Wisconsin Administrative Code, Chapter A-E 5.02, U.S. Public Land Survey Monument Record (3) (a) (b) (c) (d) (e) (f) (g) (h) (i). An additional sheet may be added if necessary to conform with said requirements.

(a) Corner location: Township 34 North
 Range 06 East
 Town/City/Village BRADLEY
 County LINCOLN

(NAD 83 (91))

NORTHING: 206266.050
 EASTING: 380838.973
 LAT: 45°24'36.442" N
 LONG: 89°44'02.257" W



Section 27

(b) (f) (g) (h) Description of monument found at this corner and if it was accepted, state all evidence (material, testimonial, occupational, plats, records, other monuments) used as a basis for accepting. If not accepting or if nothing was found, state evidence as a basis for establishing location. If reestablished through lost corner proportionate methods, indicate all monuments, distances and directions used to establish.

1854 Original surveyor set wood post at this corner with bearing trees as follow:

- Tamarack 11 N37°E 48 links
- Tamarack 12 N38°W 23 links
- Spruce 10 S24°W 36 links
- Spruce 9 S49°E 20 links

1998 Kim Pritzlaff, RLS, found that all original evidence of corner had been obliterated. The corner was therefor set at double proportionate measure.

RECEIVED AT LINCOLN COUNTY COURTHOUSE THIS 30th DAY OF Nov. 1998
Pat Priebe
 LAND INFORMATION OFFICE

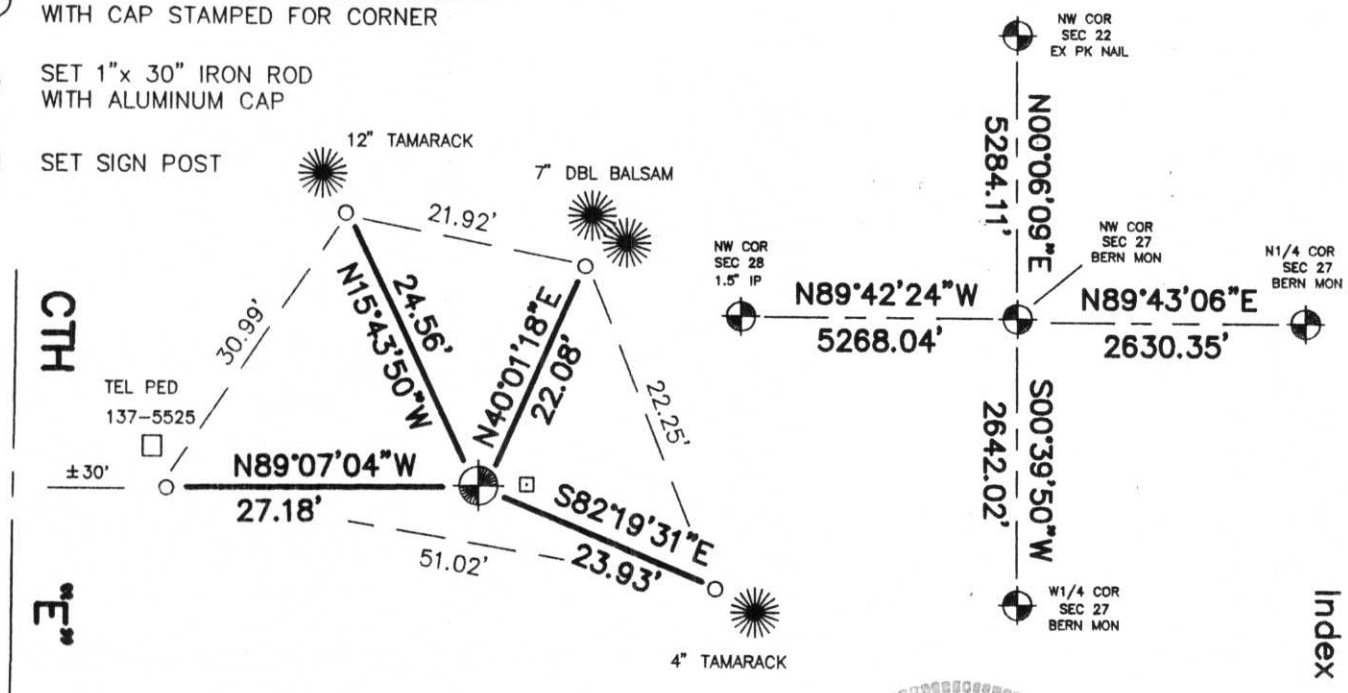
(c) (d) (e) Plan view of corner with ties to at least 4 witness monuments. If in disagreement with previously established corner, show the distance between the two corners and also indicate the ties to the disputed corner.



SET BERNTSEN ALUMINUM MONUMENT WITH CAP STAMPED FOR CORNER

○ SET 1"x 30" IRON ROD WITH ALUMINUM CAP

□ SET SIGN POST



I, Kim H Pritzlaff

(type or print name) certify that the corner location shown on this record was determined by me or under my direction and control and that this U. S. Public Land Survey Monument Record is correct and complete to the best of my knowledge and belief.

Kim H Pritzlaff 11/25/98
 Signature Date



Index No. Q-13