

U.S. PUBLIC LAND SURVEY MONUMENT RECORD

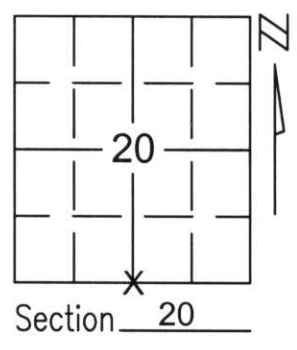
Note: This form is intended and designed to fulfill all requirements of Wisconsin Administrative Code, Chapter A-E 5.02, U.S. Public Land Survey Monument Record (3)(a)(b)(c)(d)(e)(f)(g)(h)(i). An additional sheet may be added if necessary to conform with said requirements.

(a) Corner location: Township 34 North

Range 6 East

Town/City/Village BRADLEY

County LINCOLN

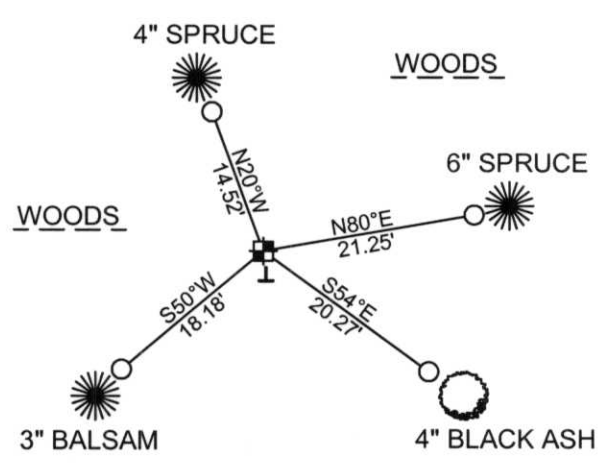


(b)(f)(g)(h) Description of monument found at this corner and if it was accepted, state all evidence (material, testimonial, occupational, plats, records, other monuments) used as a basis for accepting. If not accepted or if nothing was found, state evidence used as basis for establishing location. If reestablished through lost corner proportionate methods, indicate all monuments, distances and directions used to establish.

WE FOUND A 1-1/2" IRON PIPE WITH 4" x 4" SCRIBED POST AT THE SOUTH 1/4 CORNER OF SECTION 20, SET BY OWENS-ILLINOIS. DISTANCE FITS TO THE FOUND SOUTHEAST CORNER WITH IN 1.20 FEET AND THE SOUTHWEST CORNER WITH 0.30 FEET, AND THE CENTER WITH IN 0.20 FEET. ACCEPTED CORNER LOCATION AND REPLACED IRON PIPE WITH A LINCOLN COUNTY MONUMENT. TIED OUT MONUMENT TO PERPETUATE CORNER LOCATION.

RECEIVED AT LINCOLN COUNTY
COURTHOUSE THIS 9TH DAY
OF January 20 02
Tommy Johnson
LAND INFORMATION OFFICE

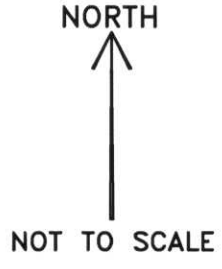
(c)(d)(e) Plan view of corner with ties to at least 4 witness monuments. If in disagreement with previously established corner, show the distances between the two corners and also indicate the ties to the disputed corner.



COORDINATES ARE REFERENCED TO THE LINCOLN COUNTY COORDINATE SYSTEM AS DEVELOPED BY THE WISCONSIN DEPARTMENT OF TRANSPORTATION AND WERE DETERMINED BY GPS OBSERVATIONS ON CONTROL POINTS AS SUPPLIED BY LINCOLN COUNTY.

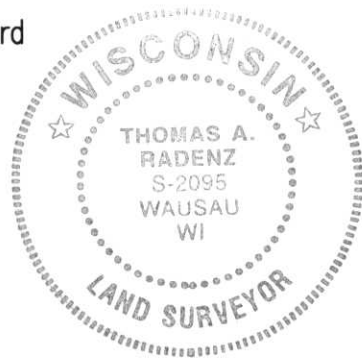
BEARINGS ARE REFERENCED TO MAGNETIC NORTH.

- ⊥ - SET VINYL "T" MARKER POST
- - SET 3/4" x 30" REBAR W/ ALUM CAP 1' FROM BEARING TREE
- ⊠ - SOUTH 1/4 CORNER SET LINCOLN COUNTY MONUMENT W/ ALUM CAP



(i) I, Thomas A. Radenz, RLS certify that the corner location on this record was determined by me or under my direction and control and that this U.S. Public Land Survey Monument Record is correct and complete to the best of my knowledge and belief.

Thomas A. Radenz 12/18/01
Signature Date



Index No.
9-7