

# U.S. PUBLIC LAND SURVEY MONUMENT RECORD

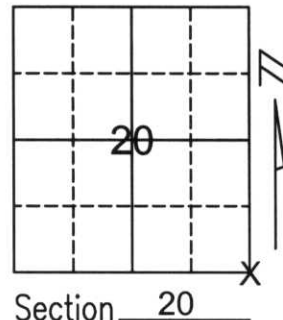
Note: This form is intended and designed to fulfill all requirements of Wisconsin Administrative Code, Chapter A-E 5.02, U.S. Public Land Survey Monument Record (3)(a)(b)(c)(d)(e)(f)(g)(h)(i). An additional sheet may be added if necessary to conform with said requirements.

(a) Corner location: Township 34 North

Range 6 East

Town/City/Village BRADLEY

County LINCOLN

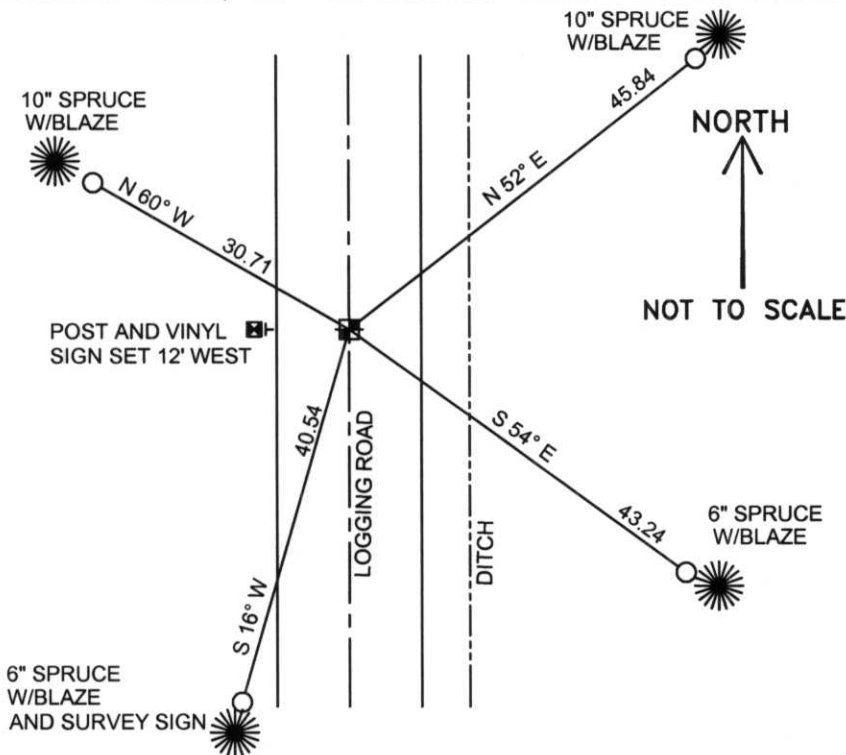


(b)(f)(g)(h) Description of monument found at this corner and if it was accepted, state all evidence (material, testimonial, occupational, plats, records, other monuments) used as a basis for accepting. If not accepted or if nothing was found, state evidence used as basis for establishing location. If reestablished through lost corner proportionate methods, indicate all monuments, distances and directions used to establish.

FOUND LINCOLN COUNTY BERNTSEN 1 FOOT BELOW LOGGING ROAD WITH 2 TIES AND 3 BLAZE TREES. RE-TIED MONUMENT TO PERPETUATE CORNER LOCATION.

RECEIVED AT LINCOLN COUNTY  
COURTHOUSE THIS 9TH DAY  
OF January 20 02  
Tony Dabrowski  
LAND INFORMATION OFFICE

(c)(d)(e) Plan view of corner with ties to at least 4 witness monuments. If in disagreement with previously established corner, show the distances between the two corners and also indicate the ties to the



COORDINATES ARE REFERENCED TO THE LINCOLN COUNTY COORDINATE SYSTEM AS DEVELOPED BY THE WISCONSIN DEPARTMENT OF TRANSPORTATION AND WERE DETERMINED BY GPS OBSERVATIONS ON CONTROL POINTS AS SUPPLIED BY LINCOLN COUNTY.

BEARINGS ARE REFERENCED TO MAGNETIC NORTH.

- - SET 3/4" x 30" REBAR W/ ALUM CAP 1' FROM BEARING TREE
- ⊕ - SOUTHEAST CORNER FOUND LINCOLN COUNTY BERTSEN
- - FOUND 4X4 POST W/ PLAQUE
- ┆ - SET VINYL POST

(i) I, Thomas A. Radenz, RLS certify that the corner location on this record was determined by me or under my direction and control and that this U.S. Public Land Survey Monument Record is correct and complete to the best of my knowledge and belief.



Index No. ....

Q-9

Signature

Date

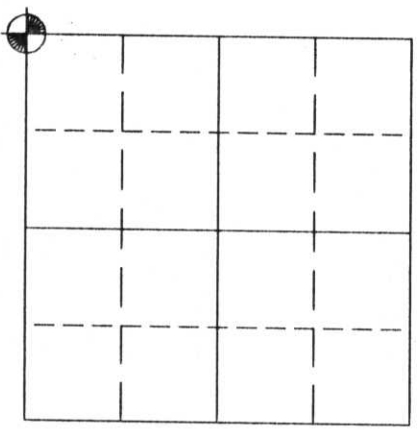
Thomas A. Radenz 1/8/2002

# U.S. PUBLIC LAND SURVEY MONUMENT RECORD

NOTE: This form is intended and designed to fulfill all requirements of Wisconsin Administrative Code, Chapter A-E 5.02, U.S. Public Land Survey Monument Record (3) (a) (b) (c) (d) (e) (f) (g) (h) (i). An additional sheet may be added if necessary to conform with said requirements.

(a) Corner location: Township 34 North  
 Range 06 East  
 Town/City/Village BRADLEY  
 County LINCOLN

**(NAD 83 (91))**  
 NORTHING: 206293.079  
 EASTING: 375571.159  
 LATITUDE: 45°24'36.702"N  
 LONGITUDE: 89°45'16.092"W



Section 28

(b) (f) (g) (h) Description of monument found at this corner and if it was accepted, state all evidence (material, testimonial, occupational, plats, records, other monuments) used as a basis for accepting. If not accepting or if nothing was found, state evidence as a basis for establishing location. If reestablished through lost corner proportionate methods, indicate all monuments, distances and directions used to establish.

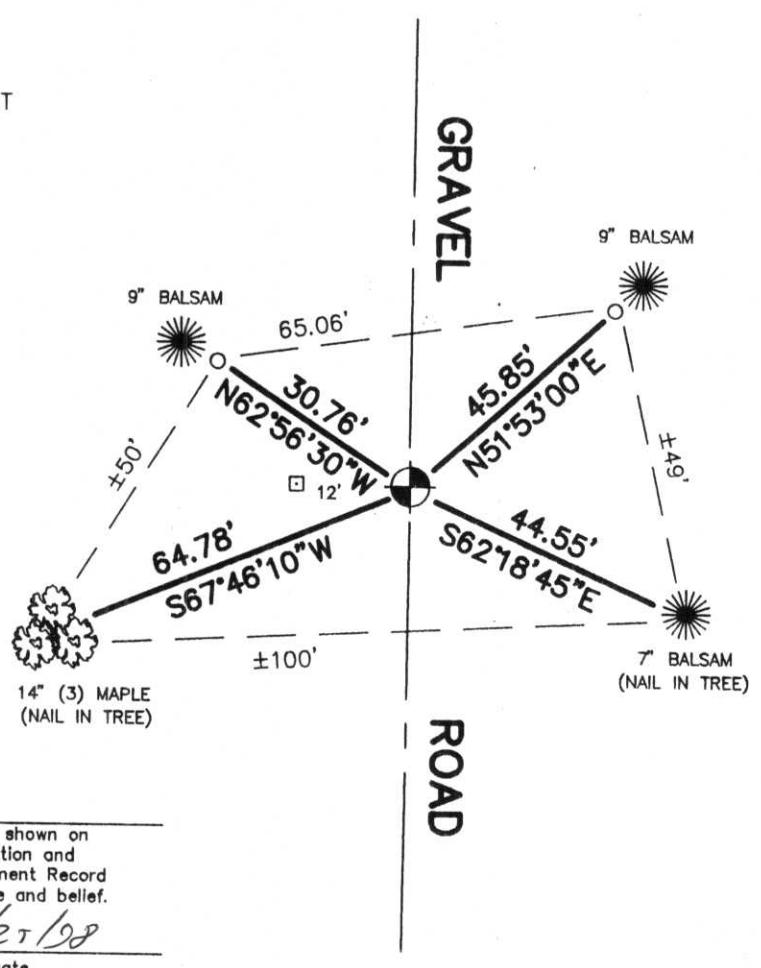
1854 Original surveyor set wood post at this corner with bearing trees as follow:

- Tamarack 10 S50°W 16 links
- Tamarack 10 N50°W 17 links
- Tamarack 10 N65°E 35 links
- Tamarack 10 S12°E 14 links

1998 Kim Pritzlaff, RLS, found a scribed post and metal tag 12' west of the centerline of a gravel road. Through testimony of local landowner Lawrence Voerman, it was determined that the corner location was actually in the centerline of the road, and was removed some years ago due to plowing. The corner was reset in the original location, and ties were set as follow:

(c) (d) (e) Plan view of corner with ties to at least 4 witness monuments. If in disagreement with previously established corner, show the distance between the two corners and also indicate the ties to the disputed corner.

- SET BERNTSEN ALUMINUM MONUMENT WITH CAP STAMPED FOR CORNER
- SET 1"x 30" IRON ROD WITH ALUMINUM CAP
- SET SIGN POST NEAR SCRIBED POST



Index No. Q-9

I, Kim H Pritzlaff  
 (type or print name) certify that the corner location shown on this record was determined by me or under my direction and control and that this U. S. Public Land Survey Monument Record is correct and complete to the best of my knowledge and belief.  
*Kim Pritzlaff*  
 Signature 11/27/98  
 Date