

U S PUBLIC LAND SURVEY MONUMENT RECORD

NOTE: This form is intended and designed to fulfill all requirements of Wisconsin Administrative Code, Chapter A-E 7.08 U.S. Public Land Survey Monument Record (3) (a-i)

A-E 7.08(3)(a) Identity of corner:
 EAST 1/4 CORNER SECTION 19,
 TOWNSHIP 34 NORTH,
 RANGE 06 EAST OF THE 4TH PM,
 TOWN OF BRADLEY,
 COUNTY OF LINCOLN

WISCORS - LINCOLN COUNTY
 N: 208,861.322 USft (208,861.370)
 E: 370,287.745 USft (370,287.680)
 Datum: NAD83 (2011)
 GNSS Method RTN - Direct
 GNSS Control WISCORS VRS



The coordinate value shown has been verified by the average of two or more GPS observations at a markedly different time. Coordinates shown in parenthesis are provided by Lincoln County.

A-E 7.08(3)(b)

Original Surveyor: Jackson L. Prentice

Date of Original Survey	Commenced:	December 24, 1854	Original Accessories:		
	Completed:	January 5, 1855	Birch	X	S 66° E 18 Links
			Aspen	10	S 68° W 17 Links

1970 - Surveyor 1418 - William H. Stuth - indicates this position as "by others" on Lincoln County map S338B.

October 17, 2005 - Surveyor 2142 - David A. Renaud - indicates this position as "N208861.3700, E370287.6800" on Lincoln County map L403A.

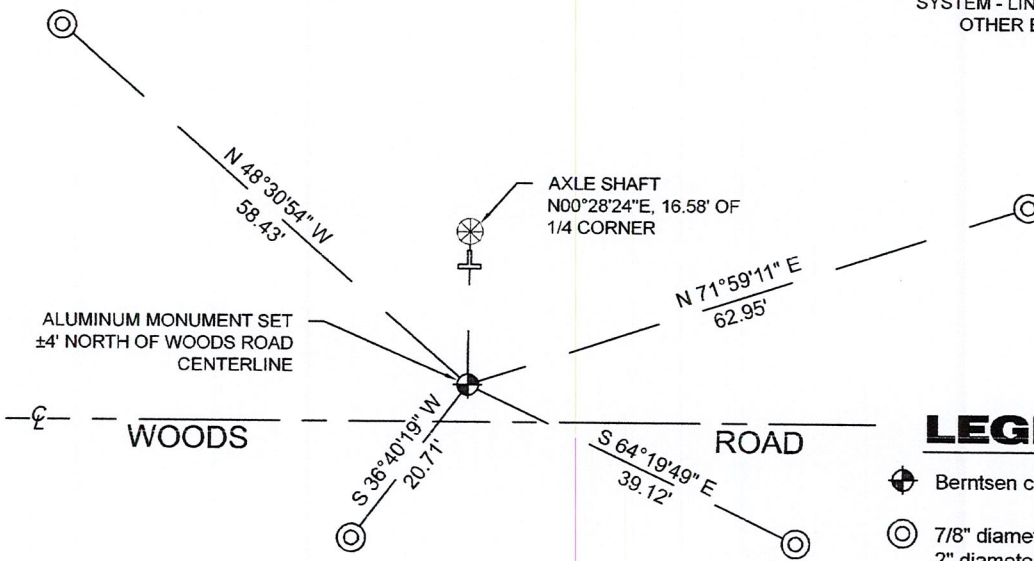
November 29, 2005 - Surveyor 2118 - Michael L. Oestreich - indicates this position as "axle shaft with 3.5" dia. gear found in place" on Lincoln County map S228B.

September 28, 2022 - While performing the 2022 Lincoln County PLSS Corner Remonumentation and GPS Services project, I found an axle shaft with a 3.5" diameter gear affixed to the top ±16.5 feet north of the computed position provided by Lincoln County. I met the land owner at the corner to discuss the situation. He told me "the axle shaft is a witness to the corner, and that there was a pipe in the road but it is now gone". I showed him the calculated position, and he agreed that it was within reasonable proximity to his recollection of the pipe.

Under the direction of Lincoln County, I restored the corner using coordinates provided by Lincoln County and set a 29.5" long Berntsen cast aluminum monument with a 4 diameter aluminum cap stamped to identify the corner position. I established 4 new reference monuments as shown below.

A-E 7.08(3)(c)(d) Plan view of corner with references to at least 4 witness monuments.

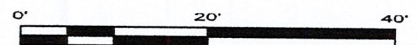
BEARINGS LISTED TO THE NEAREST SECOND ARE REFERENCED TO WISCONSIN COUNTY COORDINATE REFERENCE SYSTEM - LINCOLN COUNTY ZONE. ALL OTHER BEARINGS ARE MAGNETIC



RECEIVED BY LINCOLN COUNTY
 SURVEYOR THIS 27TH DAY
 OF December 20 22
James Dale
 COUNTY SURVEYOR

LEGEND

- Berntsen cast aluminum monument, set
- 7/8" diameter X 30" long - iron rod with 2" diameter aluminum cap, set
- Vinyl T-post, set ±14.5 feet north of corner

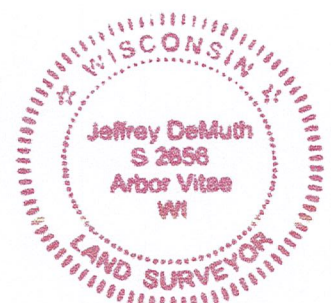


A-E 7.08(3)(e) 1854 Surveyor set a post, 1970 Surveyor had a monument "by others", 2005 Surveyor had coordinates and an axle shaft. I set a cast aluminum monument.

A-E 7.08(3)(f) I restored the corner through ACCEPTANCE OF AN OBLITERATED LOCATION.

A-E 7.08(3)(g)(h) This corner was not determined through lost-corner-proportionate methods.

A-E 7.08(3)(i) I, Jeffrey L. DeMuth, Professional Land Surveyor No. S-2656, hereby certify that the corner location on this record was determined by the Lincoln County Surveyor, and the monuments found or set as shown hereon were measured by me or under my direction and control, and that this U.S. Public Land Survey Monument Record is correct and complete to the best of my knowledge, and belief.



SIGNATURE

Jeffrey L. DeMuth

December 14, 2022

DATE

0-5

REPORT

2022-Lincoln County PLSS Corner Remonumentation and GPS Services

Wisconsin Corner Point Identification Number: 43406192000

Surveyor: Jeffrey L. DeMuth – S2656

Corner monument: Set Berntsen cast aluminum monument – 4" diameter cap x 29.5" long, at coordinates provided.

Field Book: Cardinal North – Lincoln Co. Remon. – 2022-00

Page: 41

Horizontal Datum: WisCRS – Lincoln County Zone – NAD83(2011)

Date / time of initial measurement:

September 28, 2022 - Start 13:51:17 CDT – End 14:39:27 CDT

Reference monuments:

4 – Set - 7/8" diameter X 30" long iron rods with 2" diameter Lincoln Co. aluminum cap.

1 – Found axle shaft – 1.5" diameter iron pipe with 3.75" diameter gear affixed to top.

Coordinate Table

	County Provided	2022 Measurement	Difference
North	208861.370	208861.322	0.05
East	370287.680	370287.745	-0.06

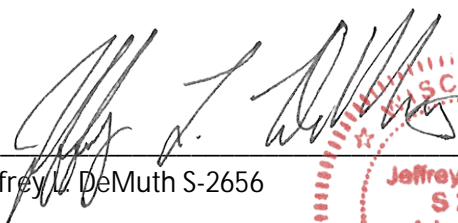

Established coordinates match existing calculated coordinates within reason.

Request Data Log for more information.

Additional Notes:

Corner falls $\pm 4'$ north of 2-track road centerline and is $\pm 4''$ below road grade.

Resident witness testimony used for corner position verification.


 Jeffrey L. DeMuth S-2656
 
 October 7, 2022
 Date

43406192000_Mon-N



43406192000_North



43406192000_West



43406192000_South



43406192000_East

