

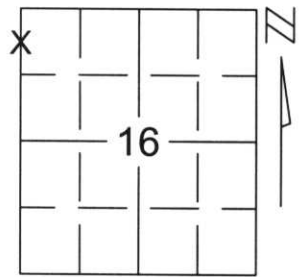
U.S. PUBLIC LAND SURVEY MONUMENT RECORD

Note: This form is intended and designed to fulfill all requirements of Wisconsin Administrative Code, Chapter A-E 5.02, U.S. Public Land Survey Monument Record (3)(a)(b)(c)(d)(e)(f)(g)(h)(i). An additional sheet may be added if necessary to conform with said requirements.

(a) Corner location: Township 34 North
Range 6 East

Town/City/Village BRADLEY

County LINCOLN

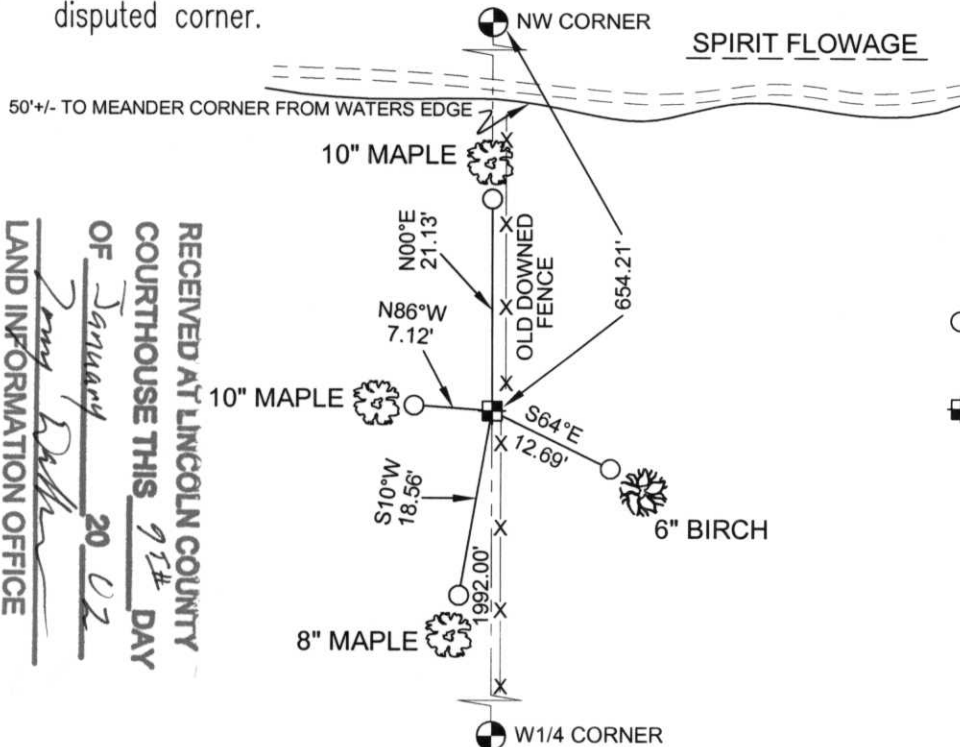


Section 16

(b)(f)(g)(h) Description of monument found at this corner and if it was accepted, state all evidence (material, testimonial, occupational, plats, records, other monuments) used as a basis for accepting. If not accepted or if nothing was found, state evidence used as basis for establishing location. If reestablished through lost corner proportionate methods, indicate all monuments, distances and directions used to establish.

In establishing the Northwest corner of Section 16 a found 3/4 inch re-bar at the North shore of the Spirit Flowage and a existing fence line from the North fit an existing fence on the South Shore of the flowage and a fence crossing a small island with the flowage. After an extensive search for the original corner on the island the existing fence line was held for the East-West direction and the North-South direction was established by holding a straight line between the North 1/4 of Section 17 and the calculated North 1/4 of Section 16. The Meander Corner was then set on line between the West 1/4 of Section 16 which was established by the Lincoln County Surveyor and the Northwest Corner of Section 16 approximately 50 feet South of the waters edge of the Spirit Flowage along an existing downed fence.

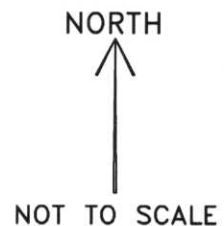
(c)(d)(e) Plan view of corner with ties to at least 4 witness monuments. If in disagreement with previously established corner, show the distances between the two corners and also indicate the ties to the disputed corner.



COORDINATES ARE REFERENCED TO THE LINCOLN COUNTY COORDINATE SYSTEM AS DEVELOPED BY THE WISCONSIN DEPARTMENT OF TRANSPORTATION AND WERE DETERMINED BY GPS OBSERVATIONS ON CONTROL POINTS AS SUPPLIED BY LINCOLN COUNTY.

BEARINGS ARE REFERENCED TO MAGNETIC NORTH.

- - SET 3/4" x 30" REBAR W/ ALUM CAP 1' FROM BEARING TREE ALL TREES WITH BLAZE
- - SOUTH MEANDER CORNER FOR NW COR. SET LINCOLN COUNTY MONUMENT W/ ALUM CAP



RECEIVED AT LINCOLN COUNTY COURTHOUSE THIS 9TH DAY OF January 20 02
LAND INFORMATION OFFICE

(i) I, Thomas A. Radenz, RLS certify that the corner location on this record was determined by me or under my direction and control and that this U.S. Public Land Survey Monument Record is correct and complete to the best of my knowledge and belief.

Signature Thomas A. Radenz Date 1/8/2002



Index No.

IS-9