

U S PUBLIC LAND SURVEY MONUMENT RECORD

NOTE: This form is intended and designed to fulfill all requirements of Wisconsin Administrative Code, Chapter A-E 7.08 U.S. Public Land Survey Monument Record (3) (a-i)

A-E 7.08(3)(a) Identity of corner:
 EAST 1/4 CORNER SECTION 17,
 TOWNSHIP 34 NORTH,
 RANGE 06 EAST OF THE 4TH PM,
 TOWN OF BRADLEY,
 COUNTY OF LINCOLN

WISCRS - LINCOLN COUNTY
 N: 214,143.361 USft (214,143.326)
 E: 375,622.647 USft (375,622.569)
 Datum: NAD83 (2011)
 GNSS Method RTN - Direct
 GNSS Control WISCORS VRS



The coordinate value shown has been verified by the average of two or more GPS observations at a markedly different time. Coordinates shown in parenthesis are provided by Lincoln County.

A-E 7.08(3)(b)

Original Surveyor: Jackson L. Prentice

Date of Original Survey Commenced: December 24, 1854
 Completed: January 5, 1855

Original Accessories:

Tamarac	10	N 40° E	26 Links
Tamarac	9	S 82° W	44 Links

January 1, 2002 - Surveyor 2095 - Thomas A. Radenz:

indicates this position as "Mag Nail - N214143.335, E375622.557" on Section Summary - Section 16, Township 34N, Range 6E.
 indicates this position as "PK Nail - N214143.335, E375622.557" on Section Summary - Section 17, Township 34N, Range 6E.

February 2, 2003 - Surveyor 1192 - Lester J. Schmidt - indicates this position as "Mag nail found in place" on Map M469C.

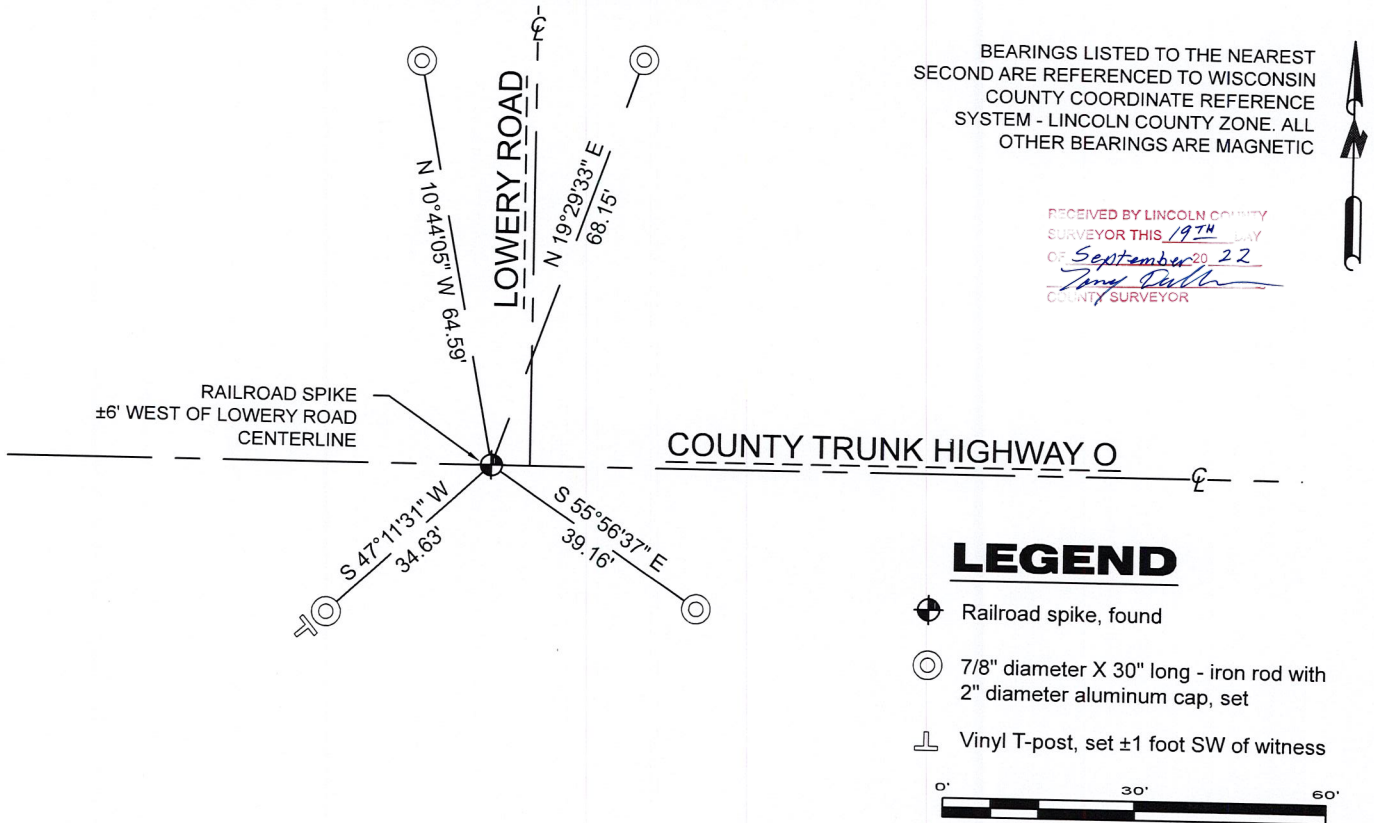
October 17, 2005 - Surveyor 2142 - David A. Renaud - indicates this position as "N214143.3270, E375622.5700" on Map L403A.

October 30, 2009 - Surveyor 1192 - Lester J. Schmidt - indicates this position as "railroad spike found in place" on Map M587B.

May 7, 2015 - Surveyor 1192 - Lester J. Schmidt - indicates this position as "railroad spike found in place" on Map L506B.

May 24, 2022 - While performing the 2022 Lincoln County PLSS Corner Remonumentation and GPS Services project, I found a railroad spike near the computed position provided by Lincoln County. The monument is ±6 feet west of the centerline of Lowery Road, and on the centerline of C.T.H. O. I established 4 new reference monuments as shown below.

A-E 7.08(3)(c)(d) Plan view of corner with references to at least 4 witness monuments.

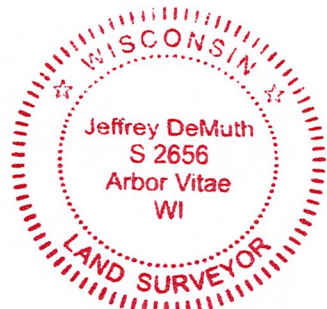


A-E 7.08(3)(e) 1855 Surveyor set a post, 2002 Surveyor had a PK nail and a Mag nail, 2003 Surveyor had a Mag nail, 2005 Surveyor had coordinates, 2009 and 2015 Surveyor had a railroad spike. I found a railroad spike.

A-E 7.08(3)(f) I accept this monument as a FOUND PERPETUATED LOCATION of the corner.

A-E 7.08(3)(g)(h) This corner was not determined through lost-corner-proportionate methods.

A-E 7.08(3)(i) I, Jeffrey L. DeMuth, Professional Land Surveyor No. S-2656, hereby certify that the corner location on this record was determined by the Lincoln County Surveyor, and the monuments found or set as shown hereon were measured by me or under my direction and control, and that this U.S. Public Land Survey Monument Record is correct and complete to the best of my knowledge, and belief.



SIGNATURE

Handwritten signature of Jeffrey L. DeMuth

September 16, 2022

DATE

K-9

REPORT

2022-Lincoln County PLSS Corner Remonumentation and GPS Services

Wisconsin Corner Point Identification Number: 43406172000

Surveyor: Jeffrey L. DeMuth – S2656

Corner monument: Found railroad spike.

Field Book: Cardinal North – Lincoln Co. Remon. – 2022-00

Page: 22

Horizontal Datum: WisCRS – Lincoln County Zone – NAD83(2011)

Date / time of initial measurement:

May 24, 2022 - Start 13:25:18 CDT – End 13:30:11 CDT

Reference monuments:

4 – Set - 7/8" diameter X 30" long iron rods with 2" diameter Lincoln Co. aluminum cap.

Coordinate Table

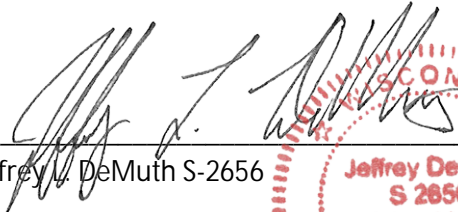
	County Provided	2022 Measurement	Difference
North	214143.326	214143.361	-0.03
East	375622.569	375622.647	-0.08

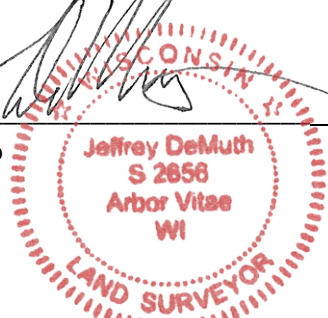
Observed coordinates match existing calculated coordinates within reason.

Request Data Log for more information.

Additional Notes:

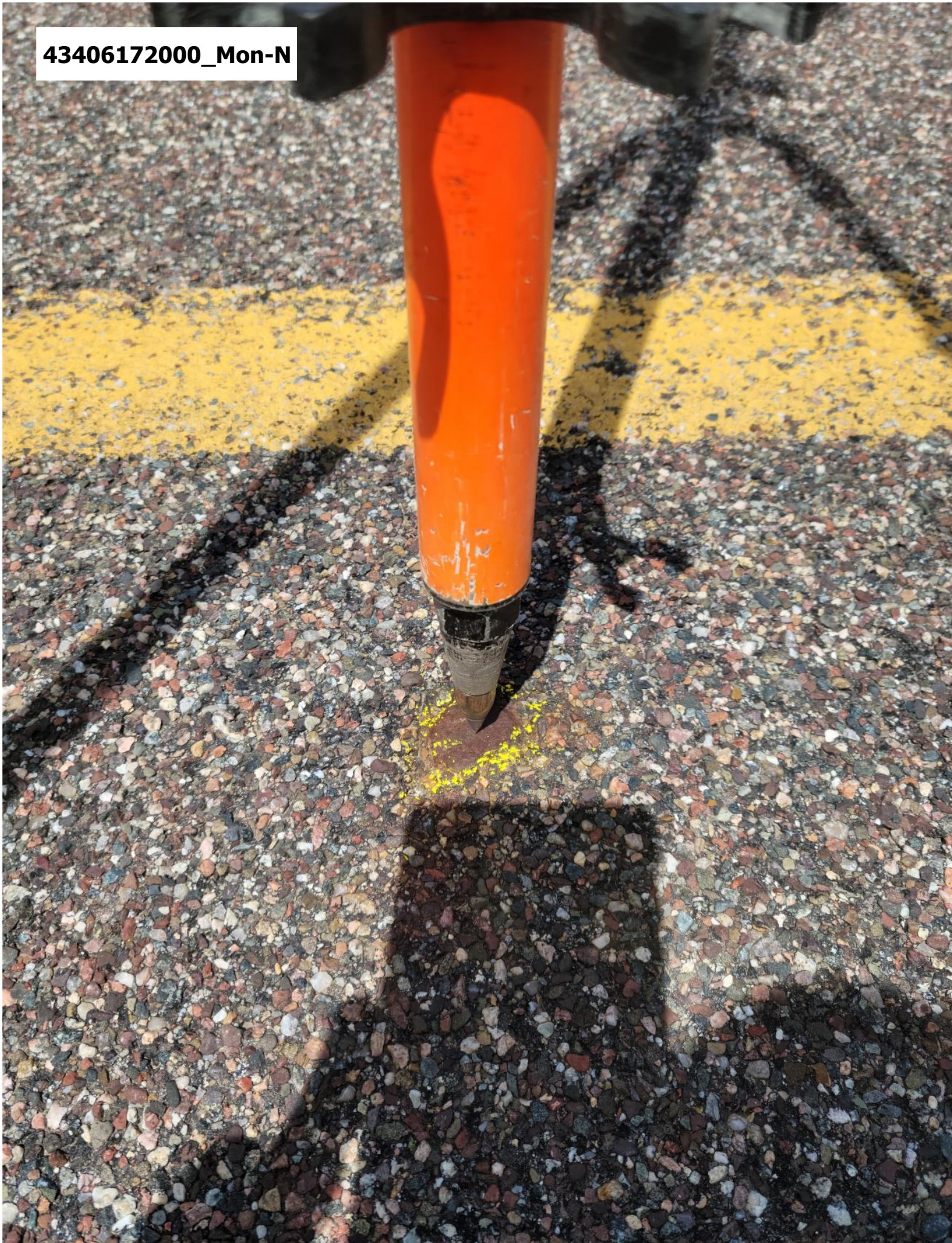
Corner falls ± 6 feet west of Lowery Road centerline, and on the centerline of C.T.H. O.



 Jeffrey L. DeMuth S-2656
 
 September 16, 2022

 Date

43406172000_Mon-N



43406172000_North



43406172000_West



43406172000_South



43406172000_East

