

# U.S. PUBLIC LAND SURVEY MONUMENT RECORD

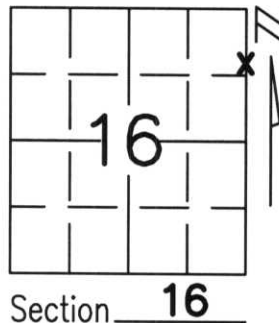
Note: This form is intended and designed to fulfill all requirements of Wisconsin Administrative Code, Chapter A-E 5.02, U.S. Public Land Survey Monument Record (3)(a)(b)(c)(d)(e)(f)(g)(h)(i). An additional sheet may be added if necessary to conform with said requirements.

(a) Corner location: Township 34 North

Range 6 East

Town/City/Village BRADLEY

County LINCOLN



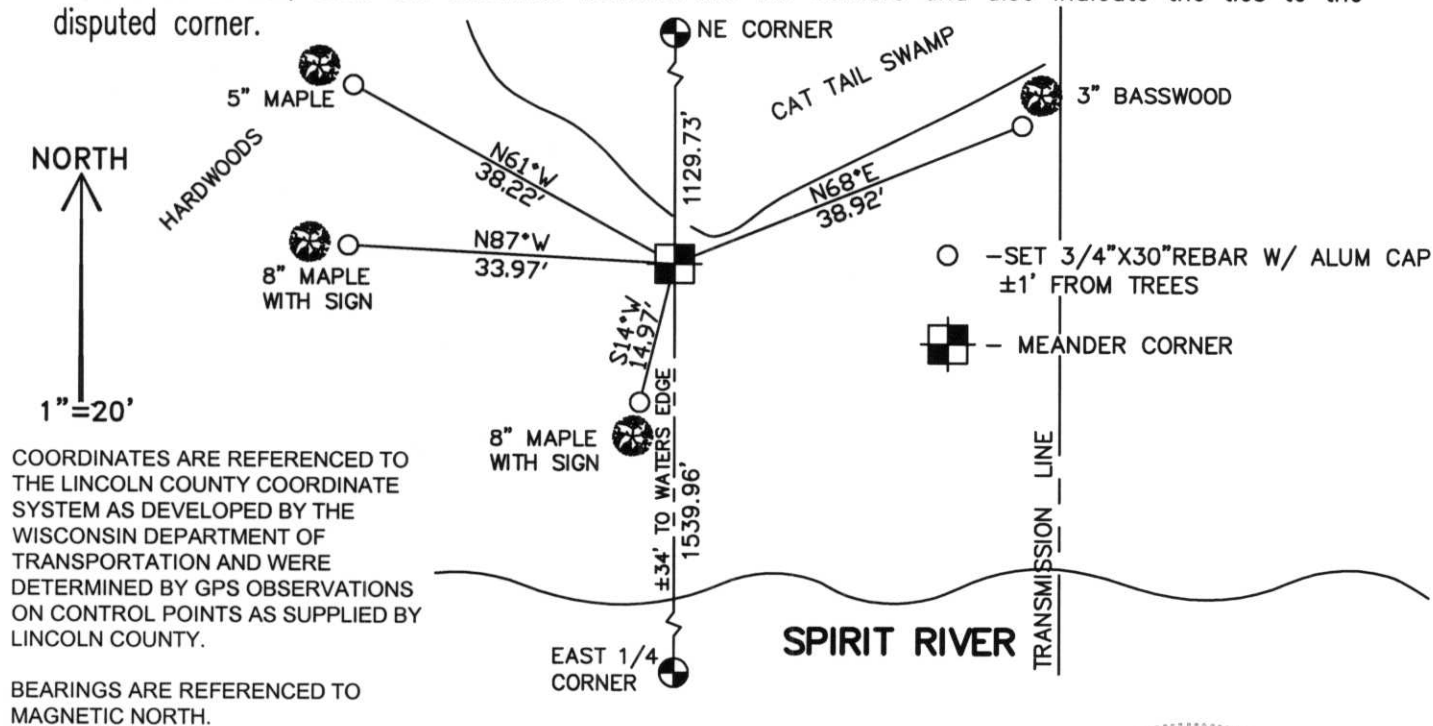
Section 16

(b)(f)(g)(h) Description of monument found at this corner and if it was accepted, state all evidence (material, testimonial, occupational, plats, records, other monuments) used as a basis for accepting. If not accepted or if nothing was found, state evidence used as basis for establishing location. If reestablished through lost corner proportionate methods, indicate all monuments, distances and directions used to establish.

WE FOUND A 2" IRON PIPE AT THE NORTHEAST CORNER OF SECTION 16, AND CONFIRMED ITS LOCATION WITH AN ADJACENT SURVEY OF THE PAPERMILL. FOUND BERNSTEN OF RECORD AT THE EAST QUARTER CORNER OF SECTION 16. SET MEANDER CORNER ON LINE BETWEEN NORTHEAST CORNER AND EAST 1/4 CORNER.

RECEIVED AT LINCOLN COUNTY  
COURTHOUSE THIS 9<sup>TH</sup> DAY  
OF January 20 02  
*Tom Dallen*  
LAND INFORMATION OFFICE

(c)(d)(e) Plan view of corner with ties to at least 4 witness monuments. If in disagreement with previously established corner, show the distances between the two corners and also indicate the ties to the disputed corner.



(i) I, Thomas A. Radenz, RLS certify that the corner location on this record was determined by me or under my direction and control and that this U.S. Public Land Survey Monument Record is correct and complete to the best of my knowledge and belief.

*Thomas A. Radenz*  
Signature \_\_\_\_\_ Date 12/21/01



Index No. ....

IS-13