

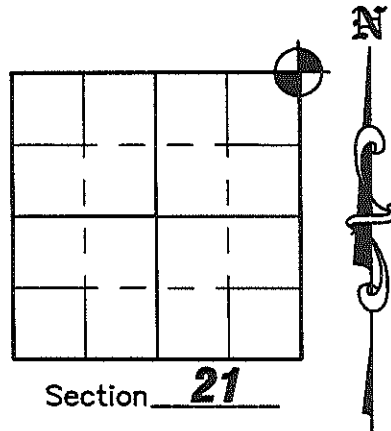
U.S. PUBLIC LAND SURVEY MONUMENT RECORD

NOTE: This form is intended and designed to fulfill all requirements of Wisconsin Administrative Code, Chapter A-E 7 .08 U.S. Public Land Survey Monument Record (3)(a)(b)(c)(d)(e)(f)(g)(h)(i). An additional sheet may be added if necessary to conform with said requirements.

(a) Corner location: Township 34 North
 Range 6 East
 Town of Bradley
 County of Lincoln

Lincoln County Coordinates:

N - 211553.951
 E - 380846.803



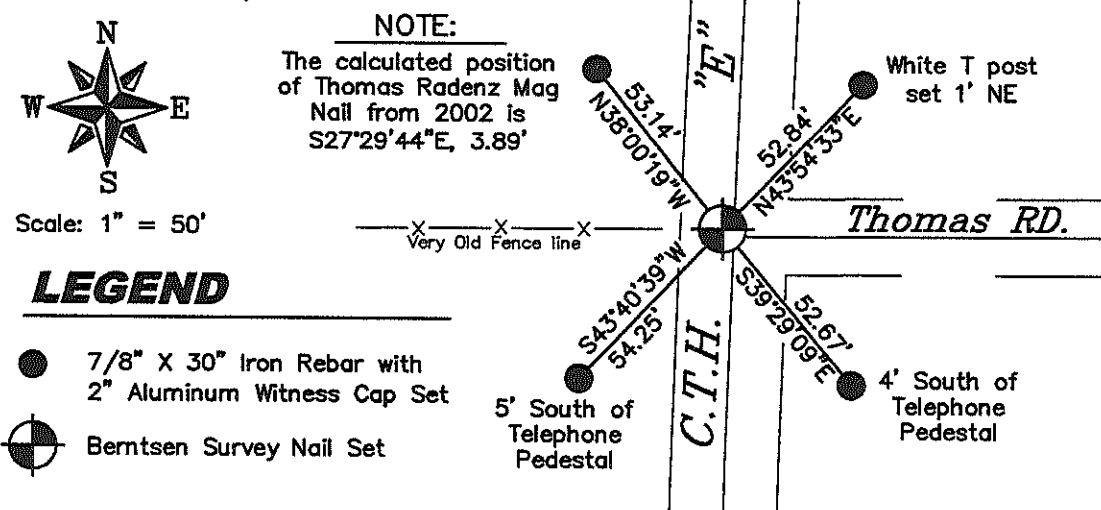
(b)(f)(g)(h) Description of monument found at this corner and if it was accepted, state all evidence (material, testimonial, occupation, plats, records, other monuments) used as a basis for accepting. If not accepted or if nothing was found, state evidence used as a basis for establishing location. If reestablished through lost corner proportionate methods, indicate all monuments, distances and directions used to establish. Indicate type of monument found or set and sign post.

December 1854 - Jackson L. Prentice set original corner post in swamp BT's: Tamarack 12" N40°E 82 lks., Tamarack 10" N50°W 47 lks., Tamarack 11" S75°W 63 lks.

January 8, 2002 - Thomas A. Radenz shows a Mag Nail to be tied out by County Surveyor on his Section Summary of Section 21.

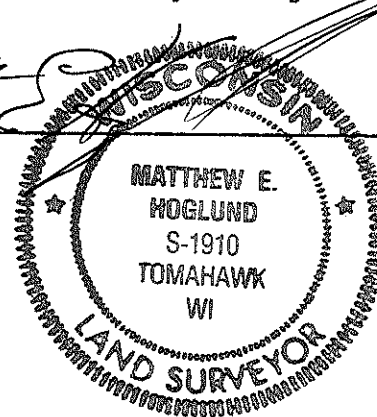
October 26, 2006 - Matthew E. Hogle found no evidence of corner after an extensive search. We talked with Thomas Radenz and they didn't know where the existing Mag Nail came from and he said he did not intend to protract the Mag Nail as the Section Corner. Road construction had destroyed the position of the mag nail from 2002. We performed an extensive dig with the assistance of the Lincoln County Highway Department at the intersection of County Highway "E" and Thomas Road, nothing was found. The corner was reset at the projected centerline of County Highway "E" and an old fence line to the West, running Westerly. Ties were set as shown hereon.

(c)(d)(e) Plan view of corner with ties to at least 4 witness monuments. If in disagreement with previously established corner, show the distances between the two corners and also indicate the ties to the disputed corner.



(i) I, Matthew E. Hogle, certify that the corner location on this record was determined by me under my direction and control and that this U.S. Public Land Survey Monument is correct and complete to the best of my knowledge and belief.

Matthew E. Hogle
 Signature
 Date 11/16/2006



RECEIVED BY LINCOLN COUNTY SURVEYOR THIS 28TH DAY OF October 2006
Tom Wall
 COUNTY SURVEYOR

M-13