

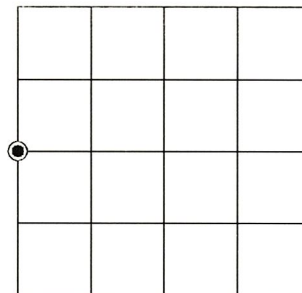
U.S. PUBLIC LAND SURVEY MONUMENT RECORD

Note: This form is intended and designed to fulfill all requirements of the Wisconsin Administrative Code, Chapter A-E 7.08 U.S. Public Land Monument Record (3)(a)(b)(c)(d)(e)(f)(g)(h)(i). An additional sheet may be added if necessary to conform with said requirements.

(a) CORNER LOCATION: **WISCORS - Lincoln County**
 West Quarter Corner of Section 14 North: 214232.085 US ft
 Township 34 North East: 386067.863 US ft
 Range 6 East Datum: NAD 83 (2011)
 Town Bradley GNSS Method: RTK Direct
 County of Lincoln GNSS Control: WISCORS VRS

(RECORDING AREA)

SECTION 14



(b) HISTORY OF ORIGINAL CORNER ESTABLISHMENT

Original Surveyor: Jackson L. Prentice
 Date of Survey: Commenced December 24, 1854
 Completed January 5, 1855
 Original B.T.'S: Oak 16" S 6°E 1.54 chains
 Elm 10" N 79°W 1.25 chains

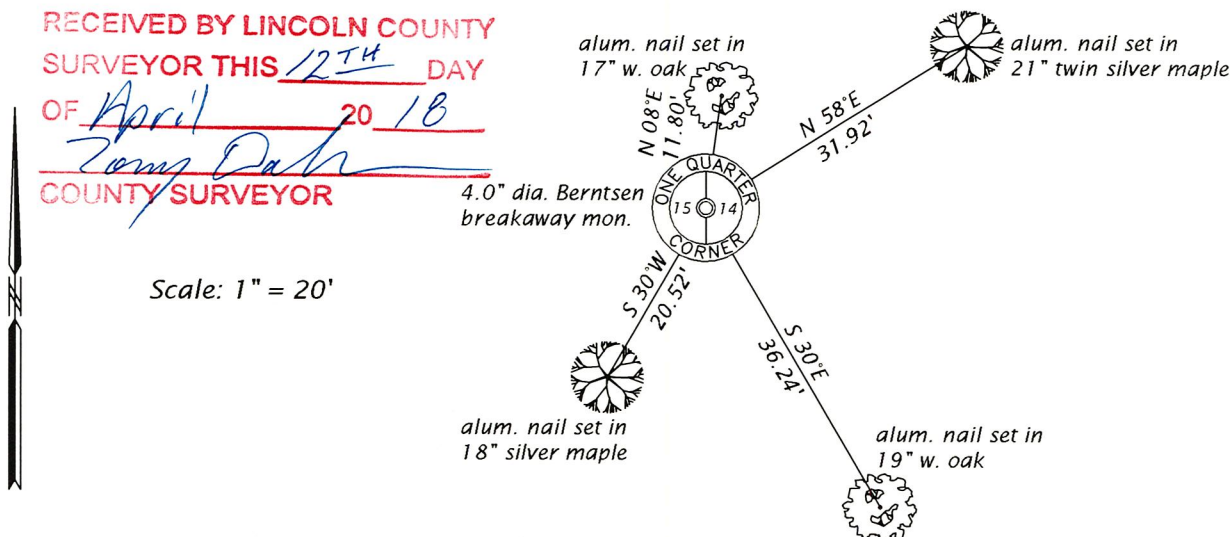
(f)(g)(h) DESCRIPTION OF MONUMENT FOUND AT THIS CORNER AND IF IT WAS ACCEPTED, STATE ALL EVIDENCE (MATERIAL, TESTIMONIAL, OCCUPATIONAL, PLATS, RECORD, OTHER MONUMENTS) USED AS A BASIS FOR ESTABLISHING LOCATION. IF NOT ACCEPTED OR IF NOTHING WAS FOUND, STATE EVIDENCE USED AS BASIS FOR ESTABLISHING LOCATION. IF REESTABLISHED THROUGH LOST CORNER PROPORTIONATE METHODS, INDICATE ALL MONUMENTS, DISTANCES AND DIRECTIONS USED TO ESTABLISH. INDICATE TYPE OF MONUMENT AND SIGN POST FOUND OR SET.

August 27, 2001 - Eugene C. Uttech, RLS No. 1451: Lincoln County Certified Survey Map No. 1523, recorded in Volume 7 Records, pages 202 and 203, shows computed position for E 1/4 Cor. Section 15, by intersection of monumented east - west quarter line with the northerly projection of the east line of River Oaks Plat from the southeast corner of Section 15.

April 5, 2002 - Eugene Uttech, RLS No. 1451: U.S. Public Land Survey Traverse Record filed in the Lincoln County Land Information Office, section subdivision summary shows bearings and distances identical with his certified survey map. This section summary legends this quarter corner as being a county monument.

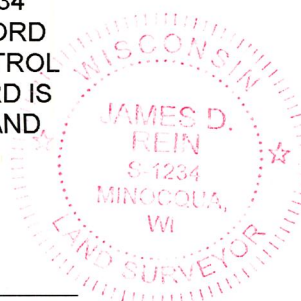
October 4, 2017 - James D. Rein, PLS No. 1234: We recovered a Berntsen 4" dia. cast aluminum monument extending 3" above ground level conforming with surveyor Uttech's position. I accept this monument as being the best remaining evidence of the original corner position because it is harmonious with prior surveys in Section 15. I found no record of any section summary in Section 14 showing the position of this corner. We made reference ties to new bearing trees as shown in the plan.

(c)(d)(e) PLAN VIEW OF CORNER WITH TIES TO AT LEAST 4 WITNESS MONUMENTS. IF IN DISAGREEMENT WITH PREVIOUSLY ESTABLISHED CORNER, SHOW THE DISTANCE BETWEEN THE TWO CORNERS AND ALSO INDICATE THE TIES TO THE DISPUTED CORNER.



RECEIVED BY LINCOLN COUNTY
 SURVEYOR THIS 12TH DAY
 OF April 20 18
James D. Rein
 COUNTY SURVEYOR

(i) I, JAMES D. REIN, PROFESSIONAL LAND SURVEYOR NO. S-1234 HEREBY CERTIFY THAT THE CORNER LOCATION ON THIS RECORD WAS DETERMINED BY ME OR UNDER MY DIRECTION AND CONTROL AND THAT THIS U.S. PUBLIC LAND SURVEY MONUMENT RECORD IS CORRECT AND COMPLETE TO THE BEST OF MY KNOWLEDGE AND BELIEF.



James D. Rein 4/09/18
 SIGNATURE DATE

INDEX NO. K - 17