

U.S. PUBLIC LAND SURVEY MONUMENT RECORD

Note: This form is intended and designed to fulfill all requirements of the Wisconsin Administrative Code, Chapter A-E 7.08 U.S. Public Land Monument Record (3)(a)(b)(c)(d)(e)(f)(g)(h)(i). An additional sheet may be added if necessary to conform with said requirements.

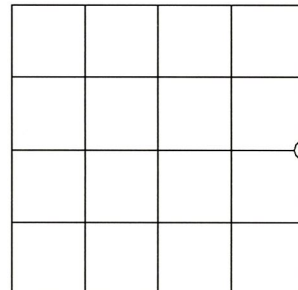
(a) CORNER LOCATION:

East Quarter Corner of Section 14
 Township 34 North
 Range 6 East
 Town Bradley
 County of Lincoln

North:
 East:
 Datum:
 GNSS Method:
 GNSS Control:

(RECORDING AREA)

SECTION 14



(b) HISTORY OF ORIGINAL CORNER ESTABLISHMENT

Original Surveyor:
 Date of Survey: Commenced
 Completed
 Original B.T.'S

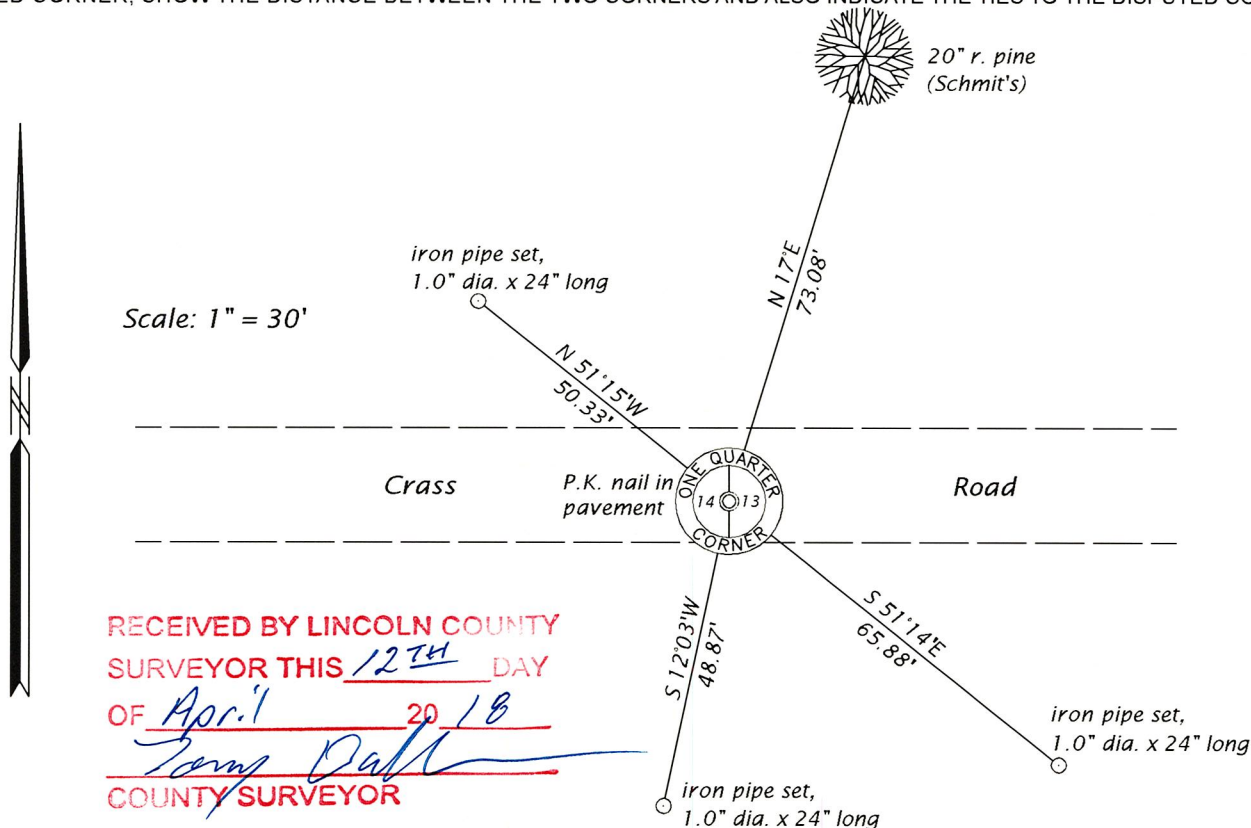
SEE PREVIOUS U.S.P.L.S. MONUMENT RECORD DATED SEPTEMBER 24, 1991.

(f)(g)(h) DESCRIPTION OF MONUMENT FOUND AT THIS CORNER AND IF IT WAS ACCEPTED, STATE ALL EVIDENCE (MATERIAL, TESTIMONIAL, OCCUPATIONAL, PLATS, RECORD, OTHER MONUMENTS) USED AS A BASIS FOR ESTABLISHING LOCATION. IF NOT ACCEPTED OR IF NOTHING WAS FOUND, STATE EVIDENCE USED AS BASIS FOR ESTABLISHING LOCATION. IF REESTABLISHED THROUGH LOST CORNER PROPORTIONATE METHODS, INDICATE ALL MONUMENTS, DISTANCES AND DIRECTIONS USED TO ESTABLISH. INDICATE TYPE OF MONUMENT AND SIGN POST FOUND OR SET.

This is a perpetuation of a previous U.S.P.L.S. Monument Record by Lester J. Schmit, RLS, dated September 24, 1991, and filed in the office of the Lincoln County Register of Deeds. A complete history of the corner can be found on the previous monument record. I accept the previous location as a true and faithful perpetuation or reestablishment of the original corner location and further perpetuate it as follows.

October 4, 2017, I, James D. Rein, P.L.S. No. S-1234, found and accepted a P.K. nail in the pavement of Crass Road. Schmit's northeasterly red pine bearing tree was still present. His other witnesses are now all gone - see below updated witnesses.

(c)(d)(e) PLAN VIEW OF CORNER WITH TIES TO AT LEAST 4 WITNESS MONUMENTS. IF IN DISAGREEMENT WITH PREVIOUSLY ESTABLISHED CORNER, SHOW THE DISTANCE BETWEEN THE TWO CORNERS AND ALSO INDICATE THE TIES TO THE DISPUTED CORNER.



RECEIVED BY LINCOLN COUNTY SURVEYOR THIS 12TH DAY OF April 20 18
James D. Rein
 COUNTY SURVEYOR

(i) I, JAMES D. REIN, PROFESSIONAL LAND SURVEYOR NO. S-1234 HEREBY CERTIFY THAT THE CORNER LOCATION ON THIS RECORD WAS DETERMINED BY ME OR UNDER MY DIRECTION AND CONTROL AND THAT THIS U.S. PUBLIC LAND SURVEY MONUMENT RECORD IS CORRECT AND COMPLETE TO THE BEST OF MY KNOWLEDGE AND BELIEF.



James D. Rein 4/09/18
 SIGNATURE DATE

INDEX NO. K - 21

U.S. PUBLIC LAND SURVEY MONUMENT RECORD

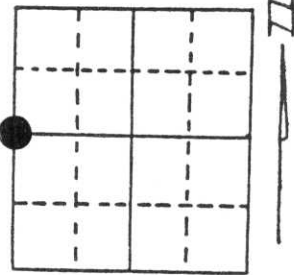
Note: This form is intended and designed to fulfill all requirements of Wisconsin Administrative Code, Chapter A-E 5.02, U.S. Public Land Survey Monument Record (3) (a) (b) (c) (d) (e) (f) (g) (h) (i). An additional sheet may be added if necessary to conform with said requirements.

(a) Corner location: Township 34 North

Range 6 East

Town/ ~~City/Village~~ Bradley

County Lincoln

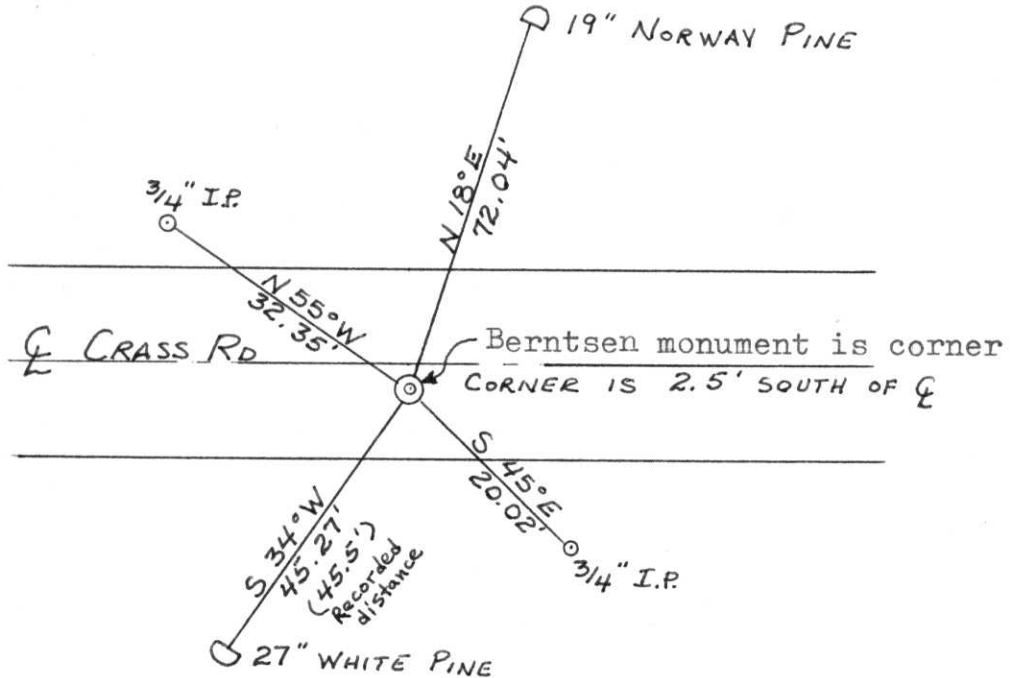


Section 13

(b) (f) (g) (h) Description of monument found at this corner and if it was accepted, state all evidence (material, testimonial, occupational, plats, records, other monuments) used as a basis for accepting. If not accepted or if nothing was found, state evidence used as basis for establishing location. If reestablished through lost corner proportionate methods, indicate all monuments, distances and directions used to establish. Original Gov't. Survey: Dec 1854 by Jackson Prentice, set wood post for corner with bearings, pine 14 S 17° W 77 links & pine 10 S 45° E 65 links. I found the 2" iron pipe for the corner per Certified Survey Map # 25 by William S. Cameron, with white pine witness to Southwest. Replaced the 2" iron pipe with a Berntsen monument and witnessed as shown below.

RECEIVED OCT 9 1991

(c) (d) (e) Plan view of corner with ties to at least 4 witness monuments. If in disagreement with previously established corner, show the distances between the two corners and also indicate the ties to the disputed corner.



(i) I, Lester J. Schmit R.L.S. S-1192

(type or print name) certify that the corner location on this record was determined by me or under my direction and control and that this U.S. Public Land Survey Monument Record is correct and complete to the best of my knowledge and belief.

Lester J. Schmit

24 Sep 91

Signature

Date



Index No. K-21

90.

Project I.D. 1173-3-00 C.T.H. "S"
U.S.H.8 U.S.H. 51 Freeway Lincoln
Co. Wm. Scherer Surveyor Received
from Division of Hwy's Jan. 11, 1973



T34N, R6E

K-21

Oct. 13, 1971

