

U.S. PUBLIC LAND SURVEY MONUMENT RECORD

Note: This form is intended and designed to fulfill all requirements of the Wisconsin Administrative Code, Chapter A-E 7.08 U.S. Public Land Monument Record (3)(a)(b)(c)(d)(e)(f)(g)(h)(i). An additional sheet may be added if necessary to conform with said requirements.

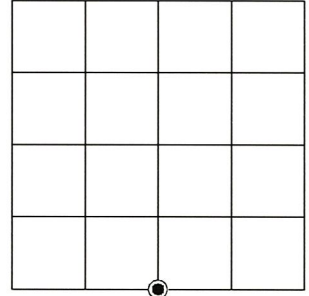
(a) CORNER LOCATION:

South Quarter Corner of Section 14
 Township 34 North
 Range 6 East
 Town Bradley
 County of Lincoln

North:
 East:
 Datum:
 GNSS Method:
 GNSS Control:

(RECORDING AREA)

SECTION 14



(b) HISTORY OF ORIGINAL CORNER ESTABLISHMENT

Original Surveyor:
 Date of Survey: Commenced
 Completed
 Original B.T.'S

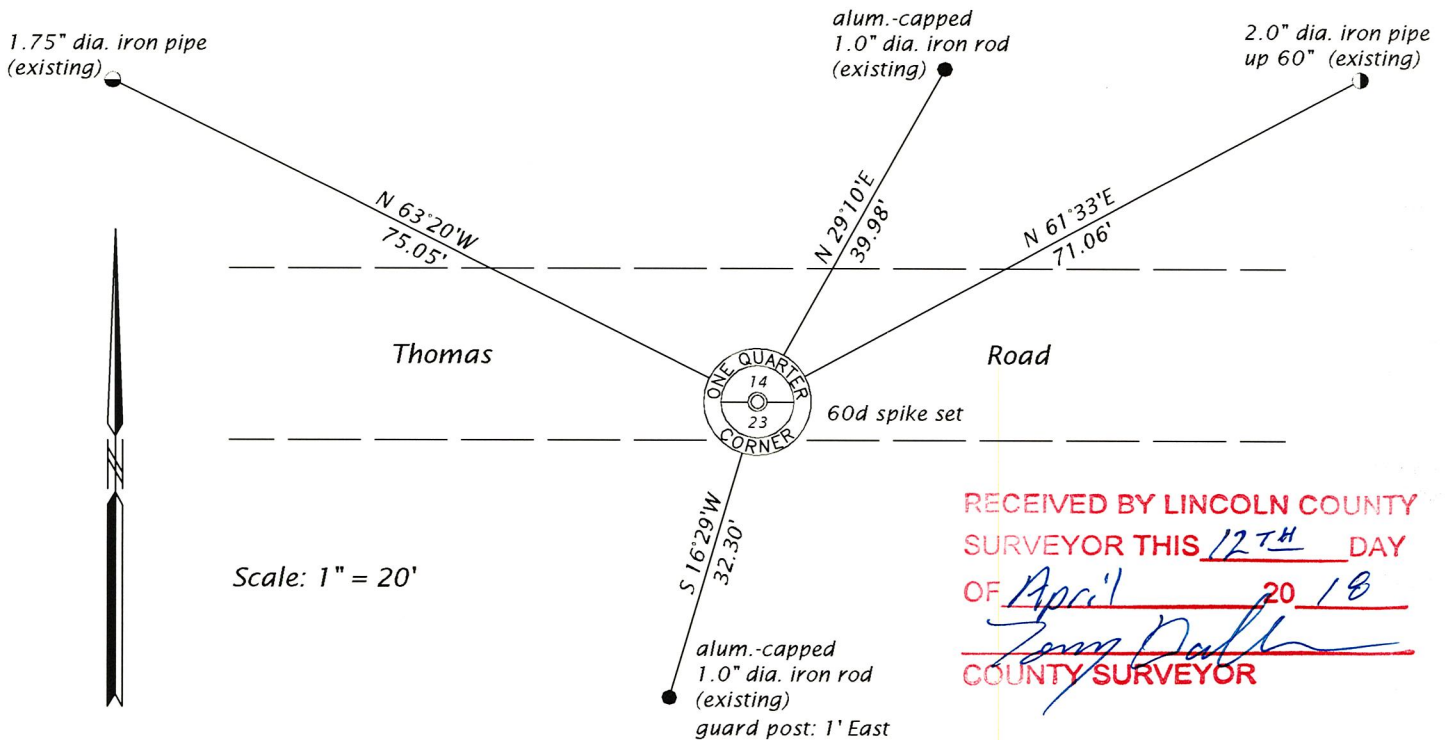
SEE PREVIOUS U.S.P.L.S. MONUMENT RECORD DATED NOVEMBER 25, 1998.

(f)(g)(h) DESCRIPTION OF MONUMENT FOUND AT THIS CORNER AND IF IT WAS ACCEPTED, STATE ALL EVIDENCE (MATERIAL, TESTIMONIAL, OCCUPATIONAL, PLATS, RECORD, OTHER MONUMENTS) USED AS A BASIS FOR ESTABLISHING LOCATION. IF NOT ACCEPTED OR IF NOTHING WAS FOUND, STATE EVIDENCE USED AS BASIS FOR ESTABLISHING LOCATION. IF REESTABLISHED THROUGH LOST CORNER PROPORTIONATE METHODS, INDICATE ALL MONUMENTS, DISTANCES AND DIRECTIONS USED TO ESTABLISH. INDICATE TYPE OF MONUMENT AND SIGN POST FOUND OR SET.

This is a perpetuation of a previous U.S.P.L.S. Monument Record by Kim H. Pritzlaff, RLS, dated November 25, 1998, and filed in the office of the Lincoln County Register of Deeds, and an earlier Certified Land Corner Restoration by Lester J. Schmit, RLS, dated Sept. 5, 1984. A complete history of the corner can be found on the previous monument records. I accept the previous location as a true and faithful perpetuation or reestablishment of the original corner location and further perpetuate it as follows.

October 4, 2017, I, James D. Rein, P.L.S. No. S-1234, did not recover the Berntsen Monument shown on the previous monument record. We did recover the witnesses monuments used by Pritzlaff. We set a 60d spike in Thomas Road, at position of Lincoln County's published county coordinates which best fit the reference monuments - see below updated witnesses.

(c)(d)(e) PLAN VIEW OF CORNER WITH TIES TO AT LEAST 4 WITNESS MONUMENTS. IF IN DISAGREEMENT WITH PREVIOUSLY ESTABLISHED CORNER, SHOW THE DISTANCE BETWEEN THE TWO CORNERS AND ALSO INDICATE THE TIES TO THE DISPUTED CORNER.



RECEIVED BY LINCOLN COUNTY SURVEYOR THIS 12TH DAY OF April 20, 18
James D. Rein
 COUNTY SURVEYOR

(i) I, JAMES D. REIN, PROFESSIONAL LAND SURVEYOR NO. S-1234 HEREBY CERTIFY THAT THE CORNER LOCATION ON THIS RECORD WAS DETERMINED BY ME OR UNDER MY DIRECTION AND CONTROL AND THAT THIS U.S. PUBLIC LAND SURVEY MONUMENT RECORD IS CORRECT AND COMPLETE TO THE BEST OF MY KNOWLEDGE AND BELIEF.



James D. Rein
 SIGNATURE 4/09/18
 DATE

INDEX NO. M - 19

CERTIFIED LAND CORNER RESTORATION

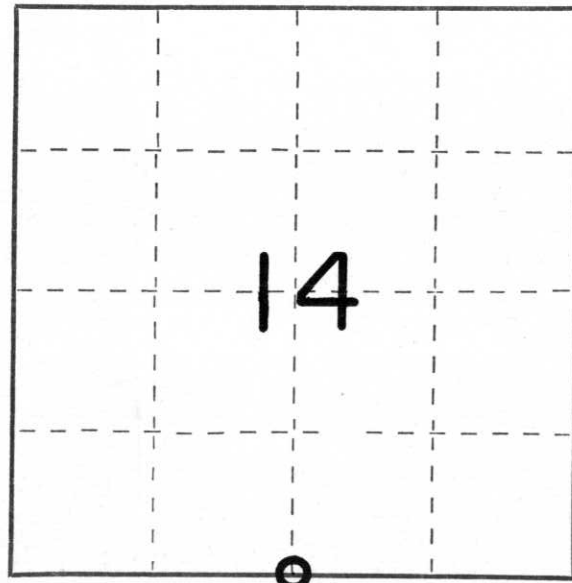
Index No. M-19

State of Wisconsin }
County of Lincoln } ss.

I, Lester J. Schmit, do hereby
certify that on the 29th day
of August, 1984, I found
evidence of the South 1/4
corner of Section 14
Township 34, North, Range
6 East, Fourth, Principal Meridian,
as described hereon; and that from this evidence
I established a new monument and accessories
as described hereon to perpetuate the original
location of this corner.

Resident witnesses:

.....
.....
.....



○ = Corner monument restored.

History of original corner establishment:

Surveyor: Jackson L. Prentice
Date: January 1855
Monumentation: Wood Post
Witnesses: Pine 12", S 39° E, 22 links
Lynn 9", N 49° W, 9 links

Description of corner evidence found:

On a map by Northwoods dividing Government Lots 9 and 10, Section 14, it called for an axle shaft as being the corner. No axle shaft or pipe or monument was found at the corner location. Extending a line from the Southwest corner through the South 1/16 Southwest corner of Section 14 and using bearing trees for the South 1/4 corner by Northwoods, I relocated the position of the South 1/4 corner of Section 14.

Existing witnesses: 7" red maple, N 13° E, 21.22"
9" sugar maple, S 27° W, 32.36'

Description of monument and accessories I established to perpetuate the original location of this corner.

Set a Berntsen monument 6" below surface and 4' south of the centreline of Thomas Road for the corner.

Witnesses: 8" sugar maple, S 8° E, 39.95'
6" sugar maple, N 53° W, 50.86'

Dated at Tomahawk, Wis., this 5th day of September, 1984.

Signature Lester J. Schmit Title Land Surveyor Registration No. S-1192
(County Surveyor, Registered Land Surveyor, or other duly authorized official)

Office of Register of Deeds, County of....., I hereby certify that the within
instrument was filed in this office for record on the.....day of....., 19.....
at.....o'clock..... M.

.....
(Register of Deeds)

By.....Deputy