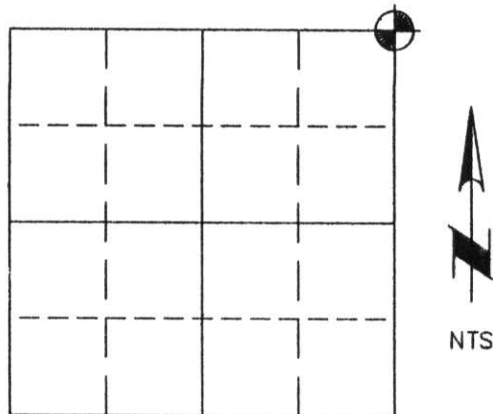


# U.S. PUBLIC LAND SURVEY MONUMENT RECORD

NOTE: This form is intended and designed to fulfill all requirements of Wisconsin Administrative Code, Chapter A-E 5.02, U.S. Public Land Survey Monument Record (3) (a) (b) (c) (d) (e) (f) (g) (h) (i). An additional sheet may be added if necessary to conform with said requirements.

(a) Corner location: Township 34 North  
 Range 06 East  
 Town/City/Village BRADLEY  
 County LINCOLN



**(NAD 83 (91))**


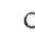

NORTHING: 211556.082  
 EASTING: 391213.936  
 LAT: 45°25'28.643" N  
 LONG: 89°41'36.803" W

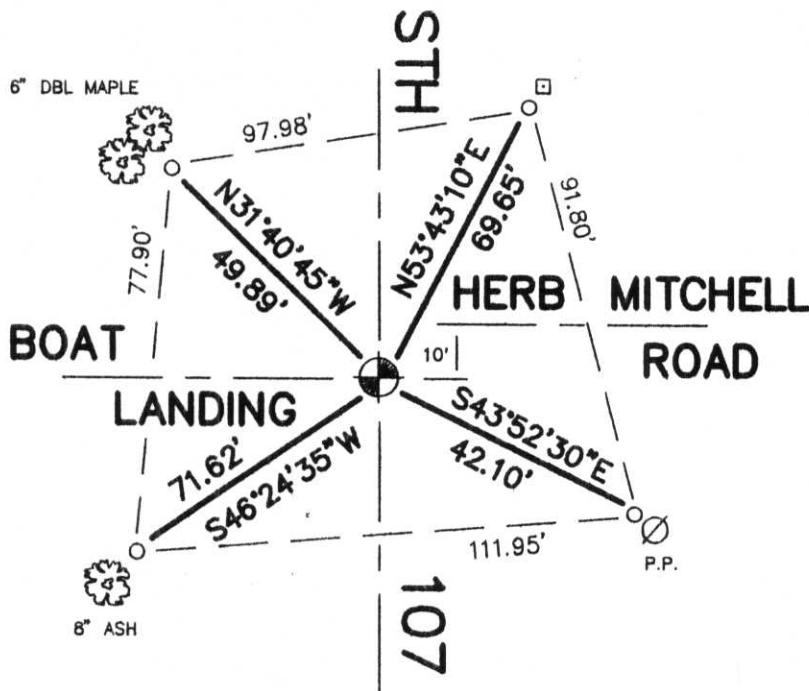
Section 23

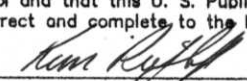
(b) (f) (g) (h) Description of monument found at this corner and if it was accepted, state all evidence (material, testimonial, occupational, plats, records, other monuments) used as a basis for accepting. If not accepting or if nothing was found, state evidence as a basis for establishing location. If reestablished through lost corner proportionate methods, indicate all monuments, distances and directions used to establish.

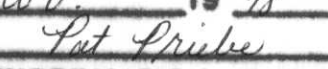
- 1854 Original surveyor set wood post at this corner location.
- 1998 Kim Pritzlaff, RLS, found that all original evidence of corner had been obliterated. A P.K. nail was found 2' west of the centerline of STH 107 and in a road centerline to the west. An excavation of the intersection was done, and nothing was found. This intersection point was used as best available evidence. A monument was set with ties as follow:

(c) (d) (e) Plan view of corner with ties to at least 4 witness monuments. If in disagreement with previously established corner, show the distance between the two corners and also indicate the ties to the disputed corner.

-  SET BERNTSEN ALUMINUM MONUMENT WITH CAP STAMPED FOR CORNER
-  SET 1"x 30" IRON ROD WITH ALUMINUM CAP
-  SET SIGN POST



I, Kim H Pritzlaff  
 (type or print name) certify that the corner location shown on this record was determined by me or under my direction and control and that this U. S. Public Land Survey Monument Record is correct and complete to the best of my knowledge and belief.  
 11/25/98  
 Signature Date

RECEIVED AT LINCOLN COUNTY  
 COURTHOUSE THIS 30th DAY  
 OF Nov 19 98  
  
 LAND INFORMATION OFFICE

Index No. M-21