

# Attachment to Tie Sheet M-25, T34N, R6E

43406130000

I visited the corner on 5/23/2018 to verify the corner and reference tie monumentation. I found all 4 ties from Jonathan W. Dulin tie sheet (8/07/2008). All 4 ties crossed very well and agreed with previous position.

## NOTE

- I set a new SMN-1 Nail at the intersection of said tie distances.

 5/25/18

Anthony R. Dallman, PLS-2405

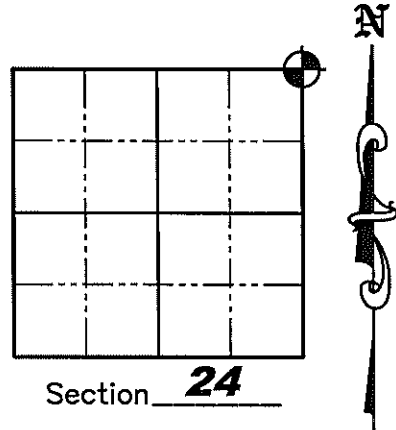
Lincoln County Surveyor



# U.S. PUBLIC LAND SURVEY MONUMENT RECORD

NOTE: This form is intended and designed to fulfill all requirements of Wisconsin Administrative Code, Chapter A-E 7 .08 U.S. Public Land Survey Monument Record (3)(a)(b)(c)(d)(e)(f)(g)(h)(i). An additional sheet may be added if necessary to conform with said requirements.

(a) Corner location: Township 34 North  
 Range 6 East  
 Town of Bradley  
 County of Lincoln



(b)(f)(g)(h) Description of monument found at this corner and if it was accepted, state all evidence (material, testimonial, occupation, plats, records, other monuments) used as a basis for accepting. If not accepted or if nothing was found, state evidence used as a basis for establishing location. If reestablished through lost corner proportionate methods, indicate all monuments, distances and directions used to establish. Indicate type of monument found or set and sign post.

**August 1851**— James M. Marsh set wooden post for corner. BTs; 10" Tamarack S10°E, 12 links; 8" Tamarack S58°W, 21 links; 8" Spruce N50°E, 22 links; 8" Tamarack N49°E, 31 links.

**October 25, 1972**— Robert Winat dug at a location showed to him by August Crass. He dug 4' below the corduroy and found nothing (probably removed by Town crews installing c.m.c.p.). He checked East and West along Road centerline to check topo calls, but they didn't fit by 100' (long each way) He then checked South along fenceline and it fit topo calls for swamp by 3'± on Range Line. He set stamped Berntsen Aluminum Monument at August Crass's location and Made three new bearing trees: 6" Spruce S02°E, 24.8'; 10" White Pine, N02°E, 26.0'; Power Pole N50°E, 18.5'

**August 1, 2007**— Jonathan W. Dulin found a disturbed Survey Spindle in a hole in the blacktop turnaround. We looked for Winat's bearing trees, but didn't find any of them, probably due to construction to end Skanawan Lake road. We tied other corners in the Section which had published GPS Lincoln County coordinates and set a Berntsen Survey Nail at the Lincoln County Published Coordinate for the NE Corner of Section 24. We Witnessed the Corner as shown on Sheet 2 hereof.

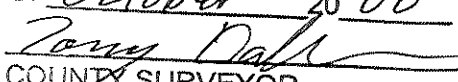
(c)(d)(e) Plan view of corner with ties to at least 4 witness monuments. If in disagreement with previously established corner, show the distances between the two corners and also indicate the ties to the disputed corner.

## See Sheet 2 Hereof

(i) I, Jonathan W. Dulin, certify that the corner location on this record was determined by me under my direction and control and that this U.S. Public Land Survey Monument is correct and complete to the best of my knowledge and belief.

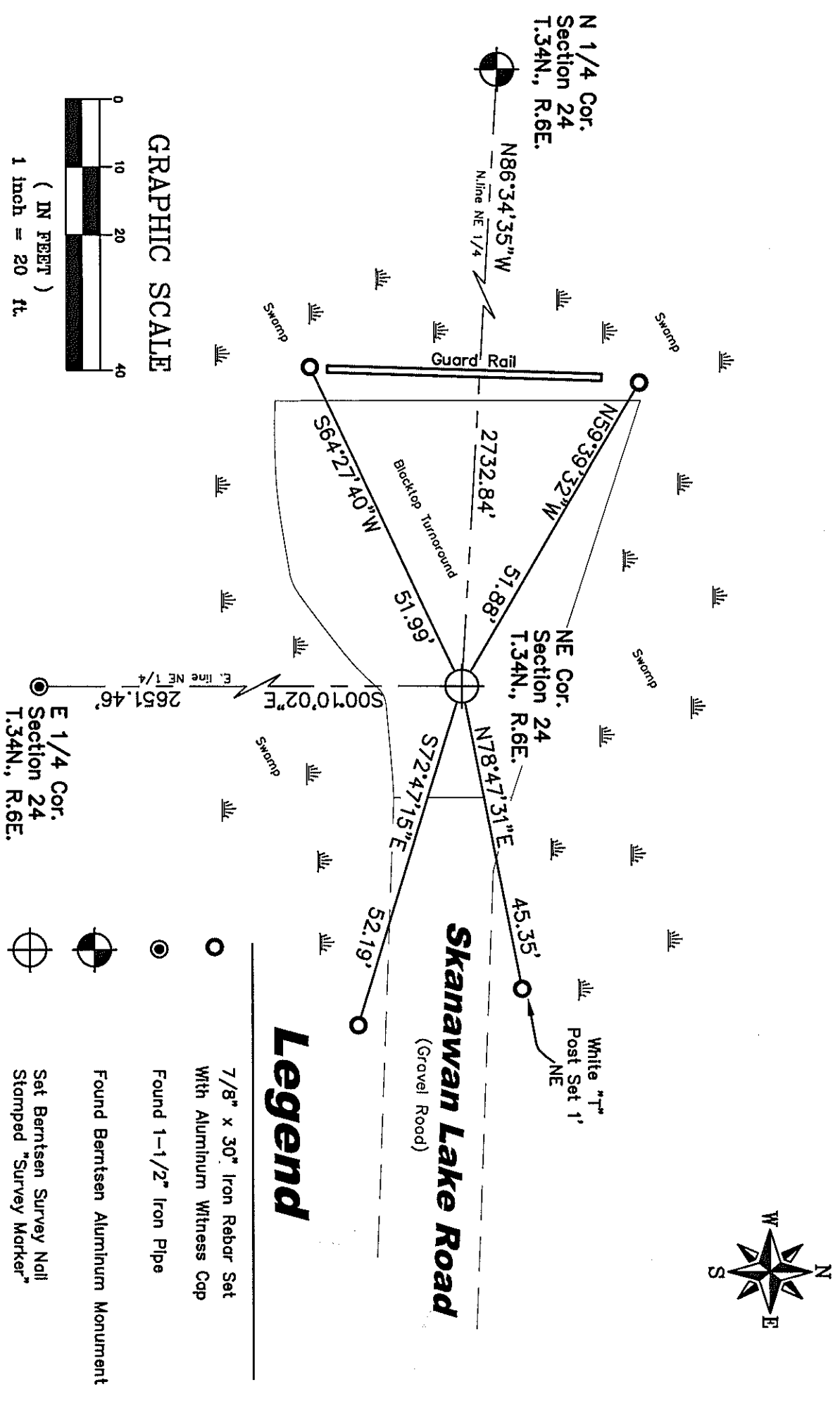
  
 Signature \_\_\_\_\_  
  
 DULIN  
 S-2754  
 RHINELANDER  
 WISCONSIN  
 LAND SURVEYOR

8/7/2008  
 Date

RECEIVED BY LINCOLN COUNTY  
 SURVEYOR THIS 28<sup>TH</sup> DAY  
 OF October 20 08  
  
 COUNTY SURVEYOR

# U.S. PUBLIC LAND SURVEY MONUMENT RECORD

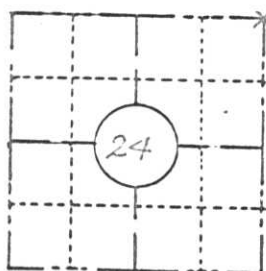
(c)(d)(e) Plan view of corner with ties to at least 4 witness monuments. If in disagreement with previously established corner, show the distances between the two corners and also indicate the ties to the disputed corner.



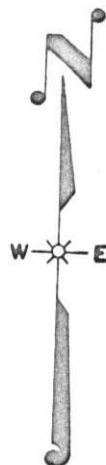
FIELD SURVEY NOTES  
**PRESERVATION OF LANDMARKS**  
 (Pursuant to Section 59.635(7) Wisconsin Statutes)

Wisconsin Department of Transportation  
 E-D-707-67

COUNTY <i>Lincoln</i>		
TOWN <i>Bradley</i>		
HIGHWAY <i>U.S.H. "51" FREEWAY</i>		
SECTION <i>24</i>	TOWNSHIP <i>T34N</i>	RANGE <i>R6E</i>
TYPE OF LANDMARK <i>Section Corner</i>		



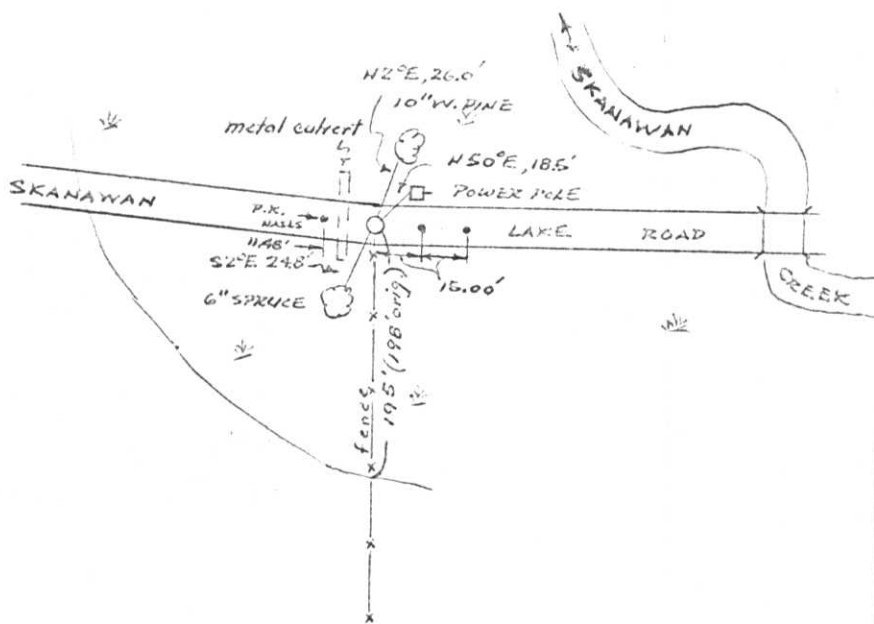
**LOCATION SKETCH**  
 (Location of landmark indicated by "x")



This space for copy of field notes or ties to the above described landmarks

Mr. August Cross pointed out the location of Joseph Krimm's concrete monument and although we excavated below roadway (4') we found no evidence of Krimm's monument or the original set by James Marsh in August 1861. (Area in road has subsided & a metal culvert has been installed just west of TOWN LINE.)

Set Bertson Aluminum monument at Cross's location, which fits fence to south & bend in town road, and made new Bearing Trees & ties.



FILED UNDER PROJECT <i>U.S.H. "51" FREEWAY</i>		
NUMBER <i>ID, 1173-0-03</i>		
SHC DISTRICT OFFICE NUMBER <i>7</i>	CITY	COUNTY <i>Lincoln</i>
LOCATED OR ESTABLISHED BY <i>NORTH WOODS SURVEYORS, INC.</i>		
NAME <i>Robert H. Winal</i>		
TITLE <i>Land Survey S-1040</i> DATE <i>Dec. 1972</i>		

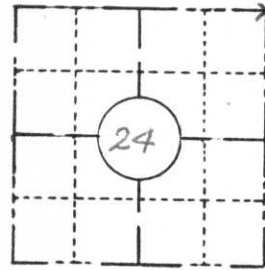
COUNTY CLERK'S OFFICE	
COUNTY OF <i>Lincoln</i>	WISCONSIN } ss
DATE RECEIVED FOR RECORD <i>1/26/73</i>	DATE COPY SENT TO COUNTY SURVEYOR <i>✓</i>
SIGNATURE OF COUNTY CLERK <i>Ken Olschky</i>	

M-25

**PRESERVATION OF LANDMARKS**

(Pursuant to Section 59.635(7) Wisconsin Statutes)

COUNTY <i>Lincoln</i>		
TOWN <i>Bradley</i>		
HIGHWAY <i>U.S.H. "51" FREEWAY</i>		
SECTION <i>24</i>	TOWNSHIP <i>T34N</i>	RANGE <i>R6E</i>
TYPE OF LANDMARK <i>Section Corner</i>		



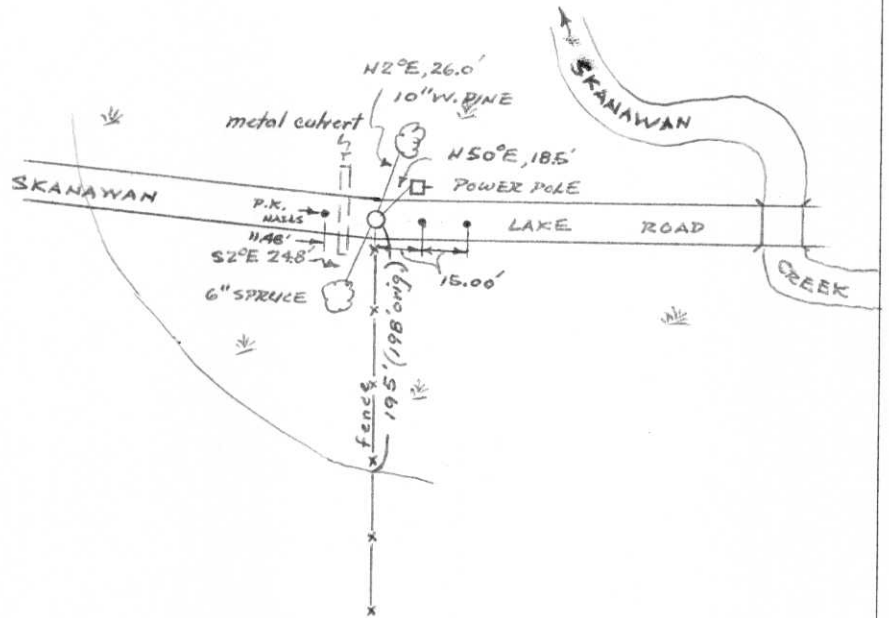
**LOCATION SKETCH**  
(Location of landmark indicated by "x")



This space for copy of field notes or ties to the above described landmarks

*Mr. August Cross pointed out the location of Joseph Krimm's concrete monument and although we excavated below corduroy (4') we found no evidence of Krimm's monument or the original set by James Marsh in August 1861. (Area in road has subsided & a metal culvert has been installed just west of TOWN LINE.)*

*Set Berntsen Aluminum monument at Cross's location, which fits fence to south & bend in town road, and made new Bearing Trees & ties.*

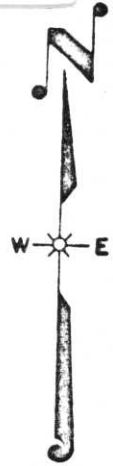
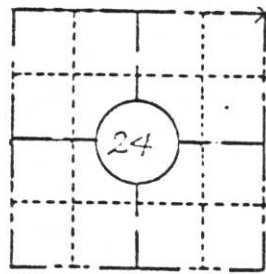


FILED UNDER PROJECT <i>U.S.H. "51" FREEWAY</i>		
NUMBER <i>ID, 1173-0-03</i>		
SHC DISTRICT OFFICE NUMBER <i>7</i>	CITY	COUNTY <i>Lincoln</i>
LOCATED OR ESTABLISHED BY <i>NORTH WOODS SURVEYORS, INC.</i>		
NAME <i>Robert H. Winal</i>		
TITLE <i>Land Surveyor S-1040</i>		DATE <i>Dec. 1972</i>

COUNTY CLERK'S OFFICE	
COUNTY OF <i>Lincoln</i>	WISCONSIN } SS
DATE RECEIVED FOR RECORD <i>1/26/73</i>	DATE COPY SENT TO COUNTY SURVEYOR <i>✓</i>
SIGNATURE OF COUNTY CLERK <i>Ken Olsberg</i>	

M-25

COUNTY <i>Lincoln</i>		
TOWN <i>Bradley</i>		
HIGHWAY <i>U.S.H. "51" FREEWAY</i>		
SECTION <i>27</i>	TOWNSHIP <i>T34N</i>	RANGE <i>R6E</i>
TYPE OF LANDMARK <i>Section Corner</i>		

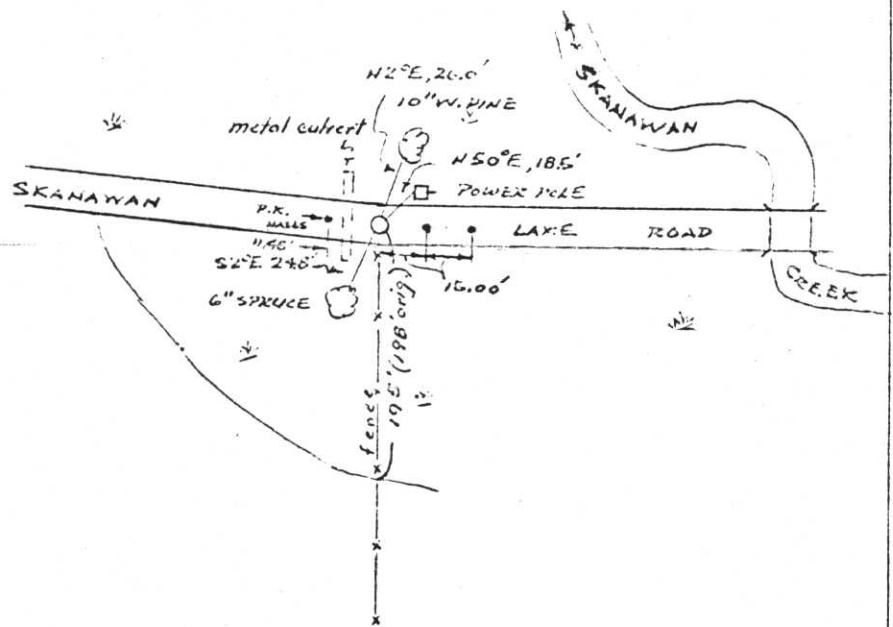


LOCATION SKETCH  
 (Location of landmark indicated by "x")

This space for copy of field notes or ties to the above described landmarks

*Mr. August Cross pointed out the location of Joseph Krimm's concrete monument and although we excavated below corduroy (4') we found no evidence of Krimm's monument or the original set by James Marsh in August 1861. (Area in road has subsided & a metal culvert has been installed just west of TOWN LINE.)*

*Set Bertson Aluminum monument at Cross's location, which fits fence to south & bend in town road, and made new bearing trees & ties.*



FILED UNDER PROJECT *U.S.H. "51" FREEWAY*

NUMBER *LD 1173-0-03*

SAC DISTRICT OFFICE NUMBER *7* CITY \_\_\_\_\_ COUNTY *Lincoln*

LOCATED OR ESTABLISHED BY *NORTHWOODS SURVEYORS, INC.*

NAME *Robert H. Hirsch*

TITLE *Land Surveyor S-1040* DATE *Dec. 1972*

COUNTY CLERK'S OFFICE  
 COUNTY OF *Lincoln* WISCONSIN } SS

DATE RECEIVED FOR RECORD *1/26/73* DATE COPY SENT TO COUNTY SURVEYOR *L*

SIGNATURE OF COUNTY CLERK  
*Ken Olschky*

PRESERVATION OF LANDMARKS

PAGE \_\_\_\_\_

RECEIVED OCT 9 1991

M-25

15118  
Sec. Cor. 24/19  
T34N, R6E T34N, R7E  
Line. County

DHDT (Linc. Co.)

25 Oct. 72

WINAT

DUG WITH GRAD-ALL @ LOCATION 93 shown by August  
Cross - nothing found down to 4' (UNDER CORDUROY). Probably  
removed by Town crews setting CMCP in Bradley. checked  
East & West along RD. E to check Tape calls - don't fit by 100'.  
(Long each way) check south along fence fits tape call  
for swamp edge by 3 ± m Range line.

Nov. 72

WINAT, SPISTER

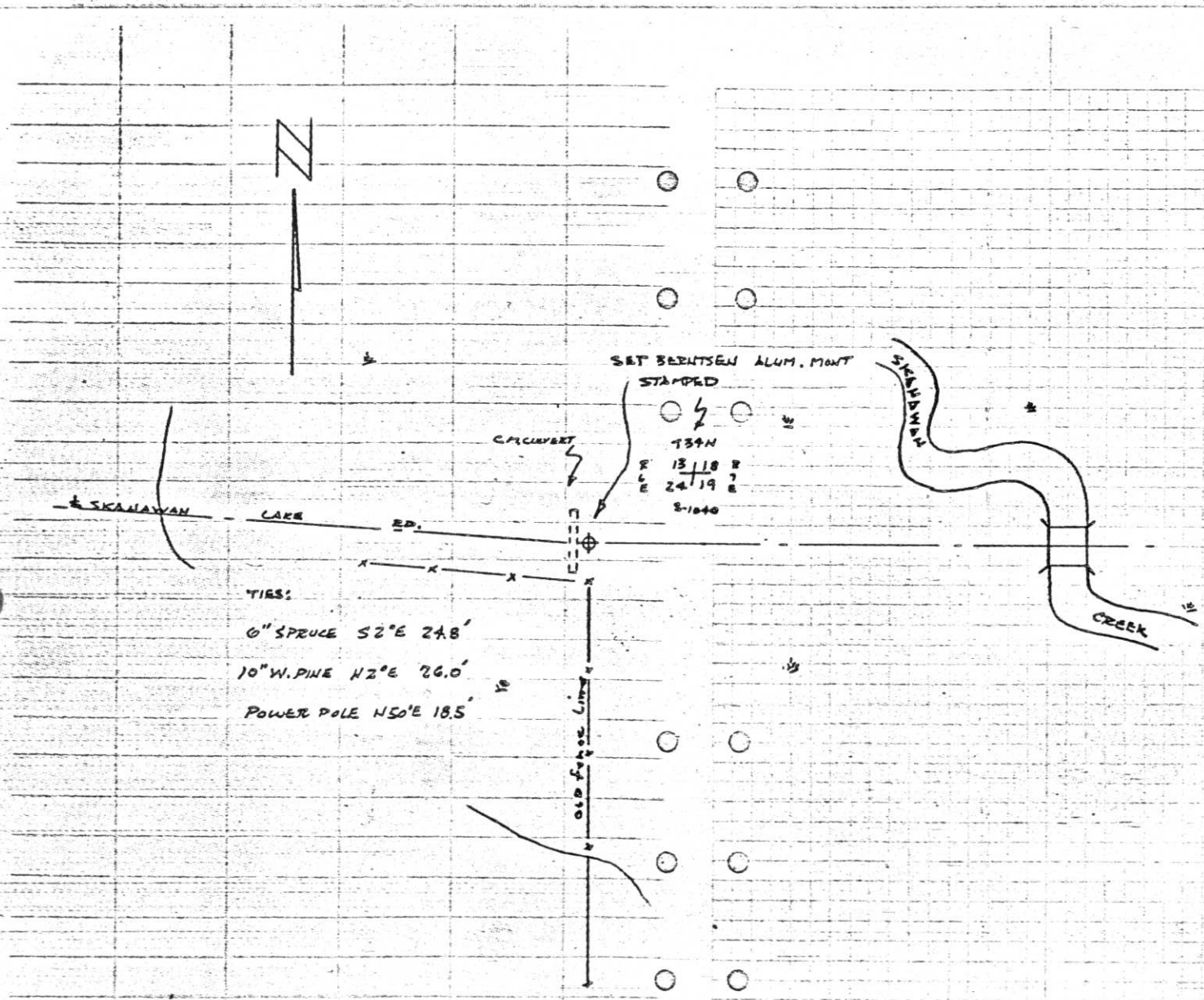
SET BERNTSEN ALUM. MONT. @ AUGUST CROSS' LOCATION.

Nov. 72

McMullen, Spitzer

STAMPED CAP & MIDDLE TIES.

151



Robert Winat, Northwoods Surveyor  
Copies of work done for Division  
of Hwys. Received Feb. 1973

Sec. Cor. 24/19  
T34N, R6E T34N, R7E  
Line. County

DHDT (Linc. Co.)

25 OCT. 72

WINAT

DUG WITH GRAD-ALL @ LOCATION 93 shown by August  
Cross - NOTHING found down to 4' (UNDER CORDURON). Probably  
removed by Town crews setting CMCP in Bradley. Checked  
East & West ALONG RD. E TO check Taps calls - don't fit by 100'.  
(Long each way) check south along fence fits Taps call  
for swamp edge by 3' emRange line.

Nov. 72

WINAT, SPRISTER

SET BERNTSEN ALUM. MONT. @ AUGUST CROSS' LOCATION.

Nov. 72

McMullen, Sprister

STAMPED CAP & MADE TIES.

