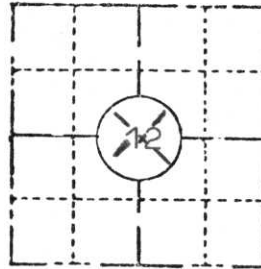


| | | |
|--|---------------------------|-----------------------|
| COUNTY Lincoln | | |
| TOWN Bradley | | |
| HIGHWAY U.S.H. 51 Freeway | | |
| SECTION 12 | TOWNSHIP T 34 N | RANGE R 6 E |
| TYPE OF LANDMARK Center 1/4 corner | | |



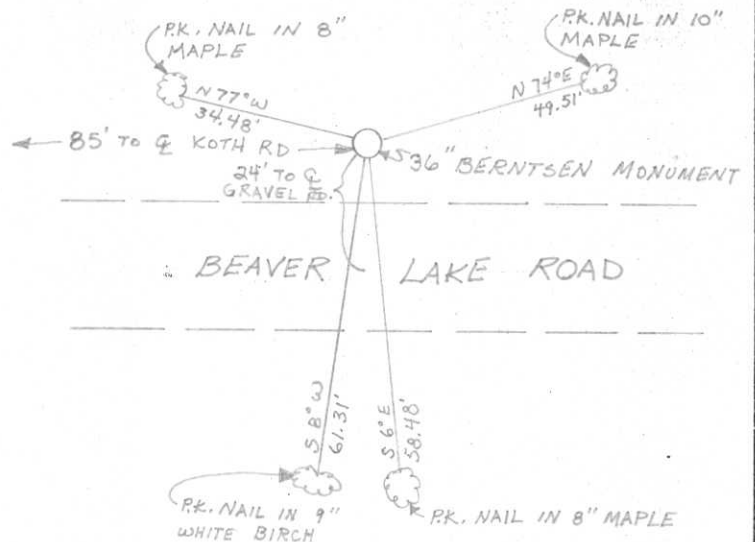
LOCATION SKETCH
(Location of landmark indicated by "x")



This space for copy of field notes or ties to the above described landmarks

Set Berntsen Monument for Centre of Section 12, flush with ground on top of embankment north of north ditch on Beaver Lake Road.

Made new B.T.'s.



| | | | | |
|---|-------------------------|--------------------------|--|-----------------------------------|
| FILED UNDER PROJECT U.S.H. 51 Freeway Number I.D. 1173-3-10 | | | COUNTY CLERK'S OFFICE COUNTY OF Lewis WISCONSIN } 55 | |
| DISTRICT OFFICE NUMBER 7 | CITY Tomahawk | COUNTY Lincoln | DATE RECEIVED FOR RECORD 8/11/78 | DATE COPY SENT TO COUNTY SURVEYOR |
| LOCATED OR ESTABLISHED BY Timberland Surveyors, Inc. | | | SIGNATURE OF COUNTY CLERK <i>Ken Oldenburg</i> | |
| NAME <i>Lester J. Schmit</i> | | | G-23 | |
| TITLE Land Surveyor S1192 DATE Aug. 1978 | | | | |

PRESERVATION OF LANDMARKS

PAGE _____



RECEIVED AT LINCOLN COUNTY
COURTHOUSE THIS 14 DAY
OF August 1978
Pat Rieche
TAX DESCRIPTION OFFICE