

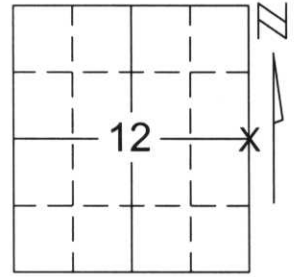
# U.S. PUBLIC LAND SURVEY MONUMENT RECORD

Note: This form is intended and designed to fulfill all requirements of Wisconsin Administrative Code, Chapter A-E 5.02, U.S. Public Land Survey Monument Record (3)(a)(b)(c)(d)(e)(f)(g)(h)(i). An additional sheet may be added if necessary to conform with said requirements.

(a) Corner location: Township 34 North  
Range 6 East

Town/City/Village BRADLEY

County LINCOLN



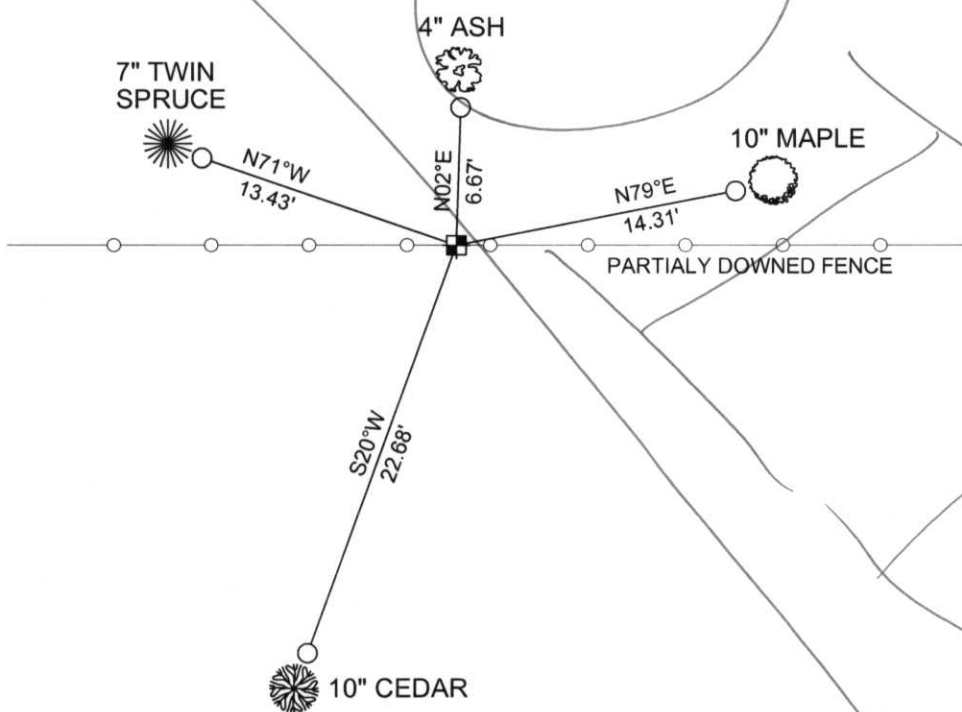
Section 12

(b)(f)(g)(h) Description of monument found at this corner and if it was accepted, state all evidence (material, testimonial, occupational, plats, records, other monuments) used as a basis for accepting. If not accepted or if nothing was found, state evidence used as basis for establishing location. If reestablished through lost corner proportionate methods, indicate all monuments, distances and directions used to establish.

WE FOUND NO EVIDENCE OF ORIGINAL CORNER OR BEARING TREES. FOUND AN EAST-WEST FENCE LINE, SEARCHED FENCE LINE AND FOUND FENCE CORNER ± 290' EAST OF PRORATED POSITION. HELD EAST-WEST FENCE AND SET MONUMENT ON LINE FROM THE NORTHEAST CORNER TO THE SOUTHEAST CORNER.  
SET A LINCOLN COUNTY MONUMENT AND TIED OUT MONUMENT TO PERPETUATE CORNER LOCATION.

RECEIVED AT LINCOLN COUNTY  
COURTHOUSE THIS 9<sup>TH</sup> DAY  
OF January 20 02  
*Tommy Dallen*  
LAND INFORMATION OFFICE

(c)(d)(e) Plan view of corner with ties to at least 4 witness monuments. If in disagreement with previously established corner, show the distances between the two corners and also indicate the ties to the disputed corner.



COORDINATES ARE REFERENCED TO THE LINCOLN COUNTY COORDINATE SYSTEM AS DEVELOPED BY THE WISCONSIN DEPARTMENT OF TRANSPORTATION AND WERE DETERMINED BY GPS OBSERVATIONS ON CONTROL POINTS AS SUPPLIED BY LINCOLN COUNTY.

BEARINGS ARE REFERENCED TO MAGNETIC NORTH.

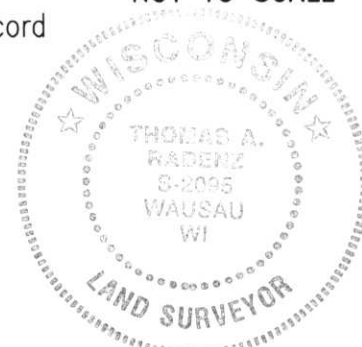
- ⊥ - SET VINYL "T" MARKER POST
- - SET 3/4" x 30" REBAR W/ ALUM CAP 1' FROM BEARING TREE
- ⊕ - EAST 1/4 CORNER SET LINCOLN COUNTY MONUMENT W/ ALUM CAP

NORTH

NOT TO SCALE

(i) I, Thomas A. Radenz, RLS certify that the corner location on this record was determined by me or under my direction and control and that this U.S. Public Land Survey Monument Record is correct and complete to the best of my knowledge and belief.

*Thomas A. Radenz*  
Signature \_\_\_\_\_ Date 1/8/02



Index No. ....

G-25

# U.S. PUBLIC LAND SURVEY MONUMENT RECORD

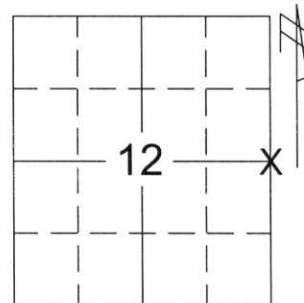
Note: This form is intended and designed to fulfill all requirements of Wisconsin Administrative Code, Chapter A-E 5.02, U.S. Public Land Survey Monument Record (3)(a)(b)(c)(d)(e)(f)(g)(h)(i). An additional sheet may be added if necessary to conform with said requirements.

(a) Corner location: Township 34 North

Range 6 East

Town/City/Village BRADLEY

County LINCOLN

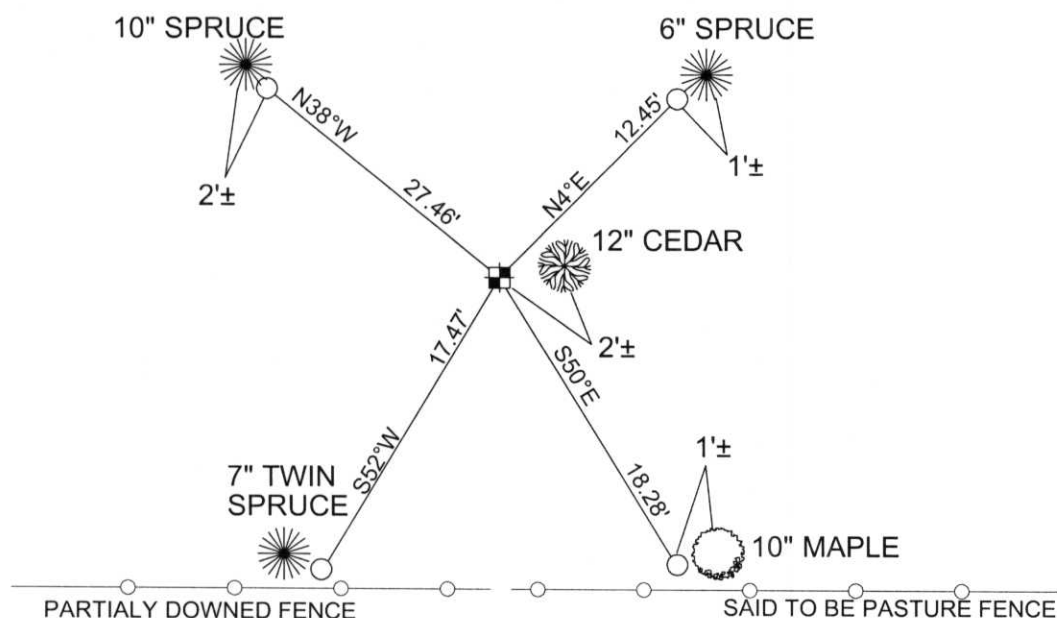


Section 12

(b)(f)(g)(h) Description of monument found at this corner and if it was accepted, state all evidence (material, testimonial, occupational, plats, records, other monuments) used as a basis for accepting. If not accepted or if nothing was found, state evidence used as basis for establishing location. If reestablished through lost corner proportionate methods, indicate all monuments, distances and directions used to establish.

After talking with local Surveyor's and land owners. The fence line to the South was said to be a old pasture fence and not a true occupation line. Also additional monumentation was found on record at the County Surveyor's Office to the West showing a monumented Center of Section and West 1/4 corner. I then set the position of the East 1/4 on a straight line from the monumented West 1/4 through the monumented Center of Section on line between the Northeast Corner of Section 12 and the Southeast corner of Section 12. I then set a Lincoln County Bernsten monument and tied out the monument as perpetuated below. Note this map supersedes and corrects the previous tie sheet to this corner.

(c)(d)(e) Plan view of corner with ties to at least 4 witness monuments. If in disagreement with previously established corner, show the distances between the two corners and also indicate the ties to the disputed corner.



COORDINATES ARE REFERENCED TO THE LINCOLN COUNTY COORDINATE SYSTEM AS DEVELOPED BY THE WISCONSIN DEPARTMENT OF TRANSPORTATION AND WERE DETERMINED BY GPS OBSERVATIONS ON CONTROL POINTS AS SUPPLIED BY LINCOLN COUNTY.

BEARINGS ARE REFERENCED TO MAGNETIC NORTH.

- ⊥ - SET VINYL "T" MARKER POST
- - SET 3/4" x 30" REBAR W/ ALUM CAP 1' FROM BEARING TREE
- ⊠ - EAST 1/4 CORNER SET LINCOLN COUNTY MONUMENT W/ ALUM CAP

RECEIVED AT LINCOLN COUNTY COURTHOUSE THIS 30<sup>TH</sup> DAY

OF January 2009

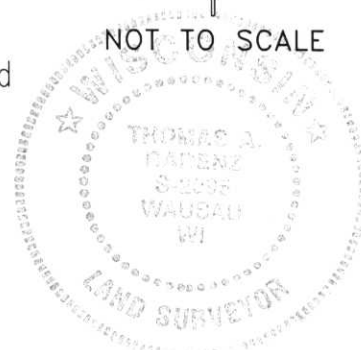
*Tom Dull*  
LAND INFORMATION OFFICE

(i) I, Thomas A. Radenz, RLS certify that the corner location on this record was determined by me or under my direction and control and that this U.S. Public Land Survey Monument Record is correct and complete to the best of my knowledge and belief.

*Thomas A. Radenz* \_\_\_\_\_  
Signature Date 1/27/09

NORTH

NOT TO SCALE



Index No. 123465  
5-25