

U.S. PUBLIC LAND SURVEY MONUMENT RECORD ADDENDUM

Note: This form is intended and designed to fulfill all requirements of the Wisconsin Administrative Code, Chapter A-E 7.08 U.S. Public Land Monument Record (3)(a)(b)(c)(d)(e)(f)(g)(h)(i). An additional sheet may be added if necessary to conform with said requirements.

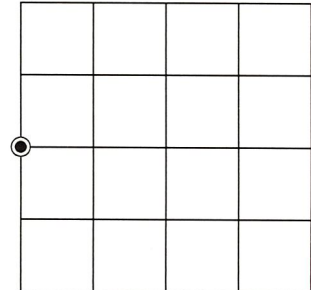
(a) CORNER LOCATION:

West Corner of Section 12
 Township 34 North
 Range 6 East
 Town of Bradley
 County of Lincoln

North:
 East:
 Datum:
 GNSS Method:
 GNSS Control:

(RECORDING AREA)

SECTION 12



(b) HISTORY OF ORIGINAL CORNER ESTABLISHMENT

Original Surveyor:
 Date of Survey: Commenced
 Completed
 Original B.T.'S

SEE PREVIOUS U.S.P.L.S. MONUMENT RECORD DATED AUGUST 14, 1978

(f)(g)(h) DESCRIPTION OF MONUMENT FOUND AT THIS CORNER AND IF IT WAS ACCEPTED, STATE ALL EVIDENCE (MATERIAL, TESTIMONIAL, OCCUPATIONAL, PLATS, RECORD, OTHER MONUMENTS) USED AS A BASIS FOR ESTABLISHING LOCATION. IF NOT ACCEPTED OR IF NOTHING WAS FOUND, STATE EVIDENCE USED AS BASIS FOR ESTABLISHING LOCATION. IF REESTABLISHED THROUGH LOST CORNER PROPORTIONATE METHODS, INDICATE ALL MONUMENTS, DISTANCES AND DIRECTIONS USED TO ESTABLISH. INDICATE TYPE OF MONUMENT AND SIGN POST FOUND OR SET.

This is a perpetuation of a previous U.S.P.L.S. Monument Record by Lester J. Schmit, RLS, dated August 14, 1978, and filed in the office of the Lincoln County Register of Deeds. A complete history of the corner can be found on the previous monument record. I accept the previous location as a true and faithful perpetuation or reestablishment of the original corner location and further perpetuate it as follows.

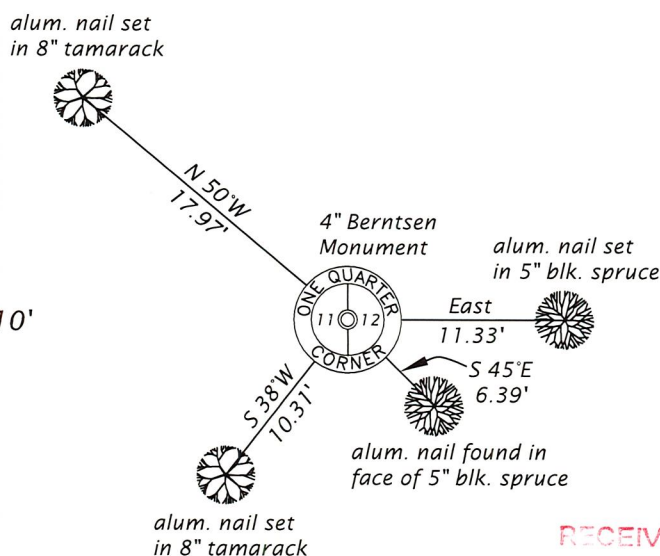
August 24, 2023 - James D. Rein, P.L.S. No. S-1234, we found, and I accepted, the 4" Berntsen monument set by Schmit in 1978. All but one of his bearing trees are now dead or gone. See below for updated references.

(c)(d)(e) PLAN VIEW OF CORNER WITH TIES TO AT LEAST 4 WITNESS MONUMENTS. IF IN DISAGREEMENT WITH PREVIOUSLY ESTABLISHED CORNER, SHOW THE DISTANCE BETWEEN THE TWO CORNERS AND ALSO INDICATE THE TIES TO THE DISPUTED CORNER.

Bearings Magnetic



Scale: 1" = 10'



RECEIVED BY LINCOLN COUNTY SURVEYOR THIS 28TH DAY OF September 20, 23
Tommy Dahl
 COUNTY SURVEYOR

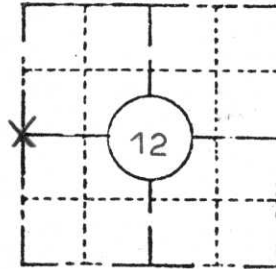
(i) I, JAMES D. REIN, PROFESSIONAL LAND SURVEYOR NO. S-1234 HEREBY CERTIFY THAT THE CORNER LOCATION ON THIS RECORD WAS DETERMINED BY ME OR UNDER MY DIRECTION AND CONTROL AND THAT THIS U.S. PUBLIC LAND SURVEY MONUMENT RECORD IS CORRECT AND COMPLETE TO THE BEST OF MY KNOWLEDGE AND BELIEF.

James D. Rein 9/14/23
 SIGNATURE DATE



INDEX NO. G - 21

COUNTY		
Lincoln		
TOWN		
Bradley		
HIGHWAY		
U.S.H. 51 Freeway		
SECTION	TOWNSHIP	RANGE
12	T 34 N	R 6 E
TYPE OF LANDMARK		
West 1/4 corner		



LOCATION SKETCH
 (Location of landmark indicated by "x")



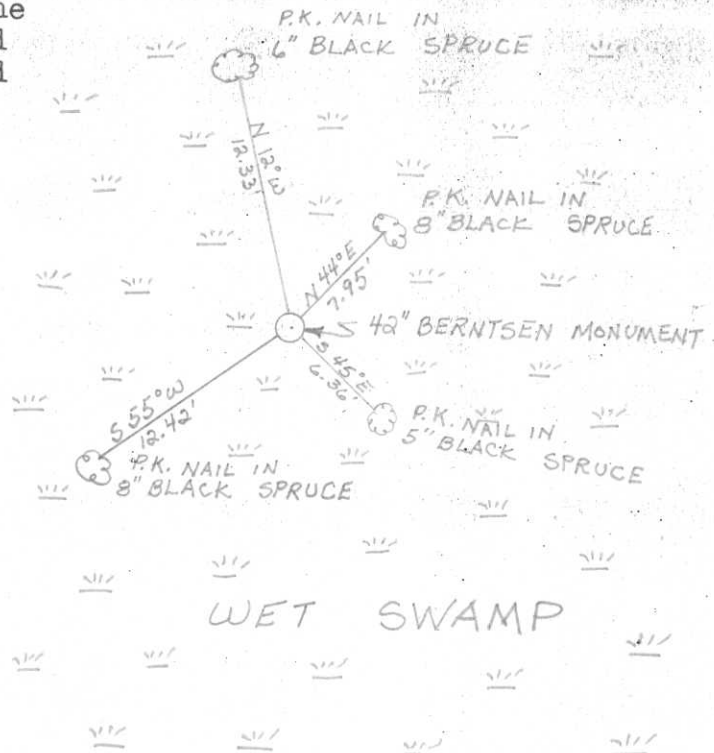
This space for copy of field notes or ties to the above described landmarks

Found an old squared wood post, rotted off and covered by sphagnum moss. At the base of where the post was laying, found the bottom of the post which was pointed and still in good condition. (preserved by the wet swamp)

No other evidence.

Set Berntsen Monument, the cap being 5" above the swamp surface, for the corner in place of the bottom of the post. Placed the bottom of the post adjacent to and southeast of the Berntsen Monument.

Made new B.T.'s



FILED UNDER PROJECT			COUNTY CLERK'S OFFICE	
U.S.H. 51 Freeway Number I.D. 1173-3-10			COUNTY OF <u>Lincoln</u> WISCONSIN } SS	
DISTRICT OFFICE NUMBER	CITY	COUNTY	DATE RECEIVED FOR RECORD	DATE COPY SENT TO COUNTY SURVEYOR
7	Tomahawk	Lincoln	8/11/78	
LOCATED OR ESTABLISHED BY			SIGNATURE OF COUNTY CLERK	
NAME <u>Lester J. Schmit</u>			<u>Ken Oldenburg</u>	
TITLE <u>Land Surveyor S1192</u> DATE <u>Aug. 1978</u>				

PRESERVATION OF LANDMARKS

PAGE _____



RECEIVED AT LINCOLN COUNTY
 COURTHOUSE THIS 14 DAY
 OF August 1978
Pat Priebe
 TAX DESCRIPTION OFFICE

6-21



12 12:47 PM



12 12:59 PM



12 12:48 PM

12 12:52 PM

