

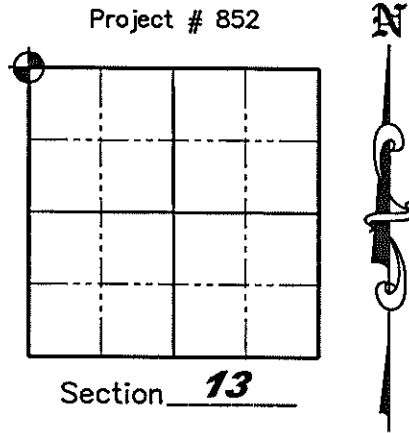
U.S. PUBLIC LAND SURVEY MONUMENT RECORD

NOTE: This form is intended and designed to fulfill all requirements of Wisconsin Administrative Code, Chapter A-7 .08 U.S. Public Land Survey Monument Record (3)(a)(b)(c)(d)(e)(f)(g)(h)(i). An additional sheet may be added if necessary to conform with said requirements.

(a) Corner location: Township 34 North
 Range 6 East/West

Town of Bradley

County of Lincoln



(b)(f)(g)(h) Description of monument found at this corner and if it was accepted, state all evidence (material, testimonial, occupation, plats, records, other monuments) used as a basis for accepting. If not accepted or if nothing was found, state evidence used as a basis for establishing location. If reestablished through last corner proportionate methods, indicate all monuments, distances and directions used to establish. Indicate type of monument found or set and sign post.

December 1854 – Jackson Prentice set original wood post for corner; BT's: 14" Pine, S17°W, 77 links.; 14" Pine, S01°E, 55 links; 10" Pine, N65°E, 98 links; 14" Pine, N17°W, 68 links.

November 8, 1994 – Lester J. Schmit replaced a found 1-1/4" iron pipe with a Berntsen Monument and set four new witness corners as follows: 12" Norway Pine, N54°53'W, 19.04' (know gone); 8" Balsam, S39°12'E, 5.52' (know gone); 3/4" iron pipe, N48°18'E, 40.68' (found); 16" Norway Pine, S45°14'W, 17.75' (found).

November 19, 1998 – Lester J. Schmit found Berntsen monument in place when he did a 3 Lot Certified Survey map near corner location – See C.S.M. No. 1225

August 18, 2008 – Jonathan W. Dulin visited corner and found that it had been taken out due to construction of a new house and driveway. We found 2 witness corners established by Lester Schmit in 1994 and used these along with corners from Certified Survey Map Number 1225 to reestablish the corner. The corner ended up falling in a block sidewalk made of brick pavers and was unable to be monumented. We set a survey nail stamped "SURVEY MARK" as a reference corner, N01°27'54" East, 6.00 feet from corner location as shown on Sheet 2 hereof.

(c)(d)(e) Plan view of corner with ties to at least 4 witness monuments. If in disagreement with previously established corner, show the distances between the two corners and also indicate the ties to the disputed corner.

See Sheet 2 hereof

(i) I, Jonathan W. Dulin, certify that the corner location on this record was determined by me under my direction and control and that this U.S. Public Land Survey Monument is correct and complete to the best of my knowledge and belief.

RECEIVED BY LINCOLN COUNTY
 SURVEYOR THIS 28TH DAY
 OF October 2008
Jonathan W. Dulin
 COUNTY SURVEYOR

[Signature]
 Signature

10/7/2008
 Date

Index No. 1-21

U.S. PUBLIC LAND SURVEY MONUMENT RECORD



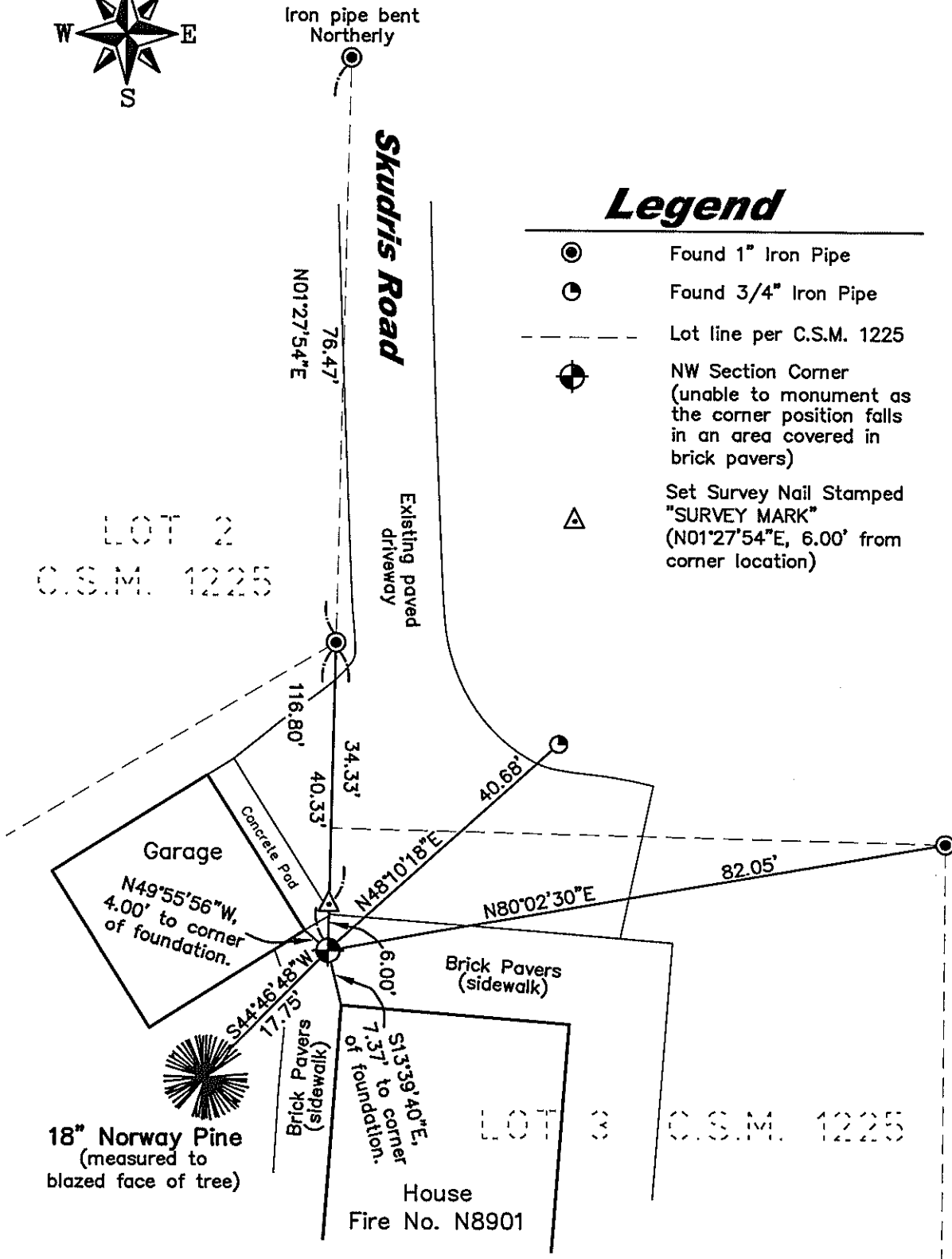
Iron pipe bent
Northerly

Skudris Road

Legend

- ⊙ Found 1" Iron Pipe
- Found 3/4" Iron Pipe
- Lot line per C.S.M. 1225
- ⊕ NW Section Corner
(unable to monument as the corner position falls in an area covered in brick pavers)
- △ Set Survey Nail Stamped "SURVEY MARK"
(N01°27'54"E, 6.00' from corner location)

LOT 2
C.S.M. 1225



GRAPHIC SCALE



(IN FEET)

I-21
34.6

U.S. PUBLIC LAND SURVEY MONUMENT RECORD

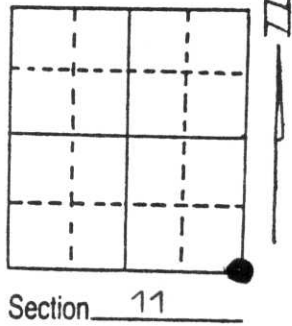
Note: This form is intended and designed to fulfill all requirements of Wisconsin Administrative Code, Chapter A-E 5.02, U.S. Public Land Survey Monument Record (3) (a) (b) (c) (d) (e) (f) (g) (h) (i). An additional sheet may be added if necessary to conform with said requirements.

(a) Corner location: Township 34 North

Range 6 East

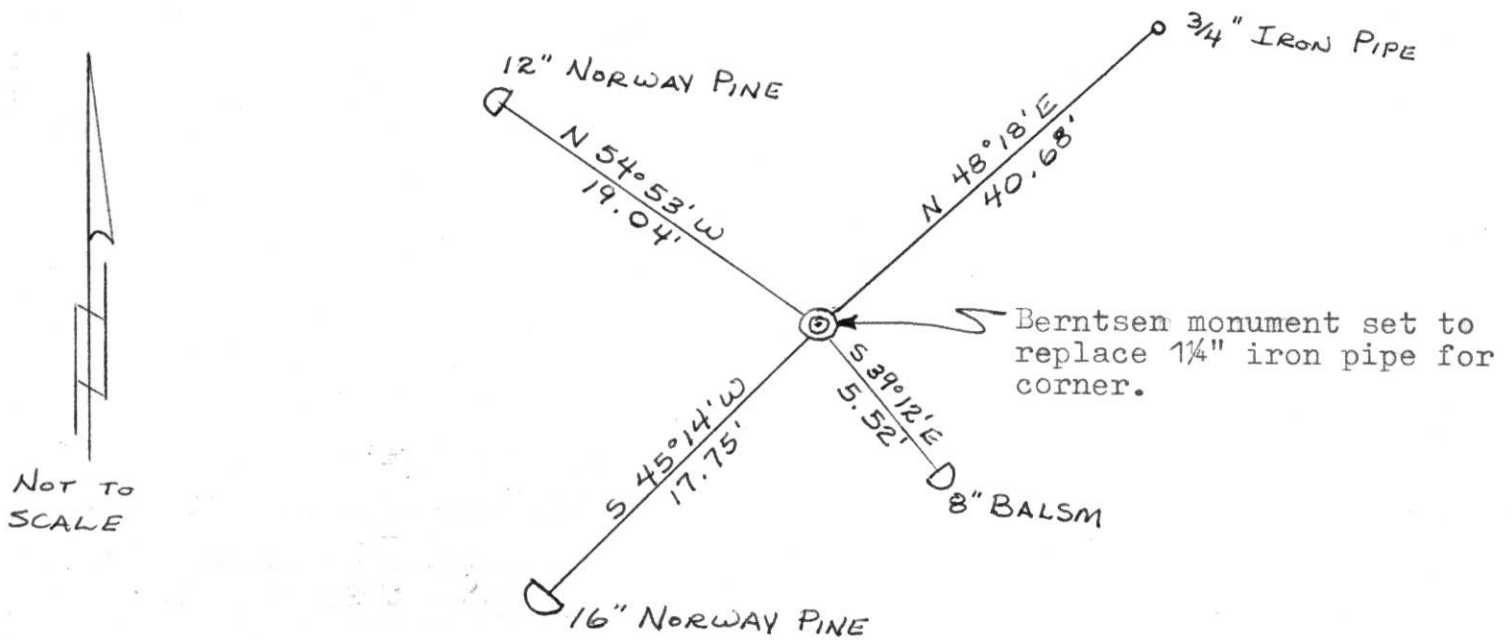
Town/City/Village Bradley

County Lincoln



(b) (f) (g) (h) Description of monument found at this corner and if it was accepted, state all evidence (material, testimonial, occupational, plats, records, other monuments) used as a basis for accepting. If not accepted or if nothing was found, state evidence used as basis for establishing location. If reestablished through lost corner proportionate methods, indicate all monuments, distances and directions used to establish. Original Gov't. Survey: Dec 1854 by Jackson Prentice, set wood post for corner with bearings, pine 14 S 17° W 77 links, pine 14 S 1° E 55 links, pine 10 N 65° E 98 links & pine 14 N 17° W 68 links. I found a 1/4" iron pipe (well point) for the corner. I replaced the 1/4" iron pipe with a Berntsen monument and witnessed as shown below.

(c) (d) (e) Plan view of corner with ties to at least 4 witness monuments. If in disagreement with previously established corner, show the distances between the two corners and also indicate the ties to the disputed corner.



(i) I, Lester J. Schmit R.L.S. S-1192
 (type or print name) certify that the corner location on this record was determined by me or under my direction and control and that this U.S. Public Land Survey Monument Record is correct and complete to the best of my knowledge and belief.

Lester J. Schmit
 Signature

8 Nov 94
 Date



Index No. I-21