

U.S. PUBLIC LAND SURVEY MONUMENT RECORD

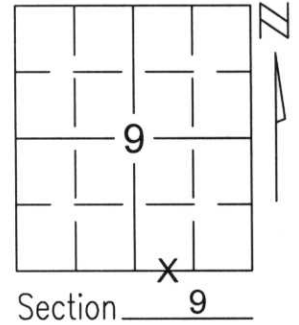
Note: This form is intended and designed to fulfill all requirements of Wisconsin Administrative Code, Chapter A-E 5.02, U.S. Public Land Survey Monument Record (3)(a)(b)(c)(d)(e)(f)(g)(h)(i). An additional sheet may be added if necessary to conform with said requirements.

(a) Corner location: Township 34 North

Range 6 East

Town/City/Village BRADLEY

County LINCOLN

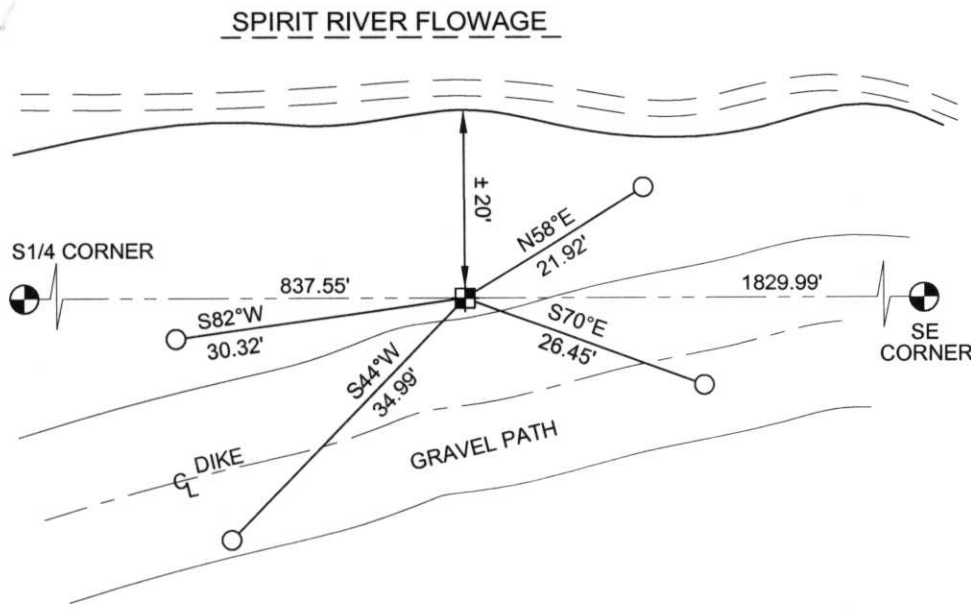


(b)(f)(g)(h) Description of monument found at this corner and if it was accepted, state all evidence (material, testimonial, occupational, plats, records, other monuments) used as a basis for accepting. If not accepted or if nothing was found, state evidence used as basis for establishing location. If reestablished through lost corner proportionate methods, indicate all monuments, distances and directions used to establish.

THE SOUTH 1/4 CORNER FALLS IN THE SPIRIT RIVER FLOWAGE.
 WE FOUND THE SOUTHWEST CORNER OF THE SOUTHWEST 1/4 OF THE SOUTHWEST 1/4. TO REESTABLISH THE SOUTH 1/4 CORNER OF SECTION 9, WE HELD THE 40 CORNER FOR LINE AND DOUBLED THE DISTANCE FOR THE CORNER LOCATION. THIS POSITION FITS A FOUND CENTER WITHIN 1.30 FEET. WE SET A MEANDER CORNER ON LINE BETWEEN THE CALCULATED SOUTH 1/4 CORNER AND THE FOUND SOUTHWEST CORNER.
 TIED OUT MONUMENT TO PERPETUATE CORNER LOCATION.

RECEIVED AT LINCOLN COUNTY
 COURTHOUSE THIS 9TH DAY
 OF January 20 02
Tamy Dalko
 LAND INFORMATION OFFICE

(c)(d)(e) Plan view of corner with ties to at least 4 witness monuments. If in disagreement with previously established corner, show the distances between the two corners and also indicate the ties to the disputed corner.



COORDINATES ARE REFERENCED TO THE LINCOLN COUNTY COORDINATE SYSTEM AS DEVELOPED BY THE WISCONSIN DEPARTMENT OF TRANSPORTATION AND WERE DETERMINED BY GPS OBSERVATIONS ON CONTROL POINTS AS SUPPLIED BY LINCOLN COUNTY.

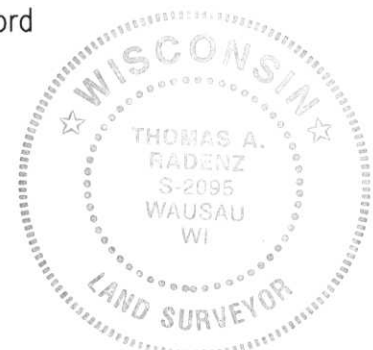
BEARINGS ARE REFERENCED TO MAGNETIC NORTH.

- - SET 3/4" x 30" REBAR W/ ALUM CAP
- ⊕ - EAST MEANDER CORNER FOR S 1/4 CORNER SET LINCOLN COUNTY MONUMENT W/ ALUM CAP

NORTH
 ↑
 NOT TO SCALE

(i) I, Thomas A. Radenz, RLS certify that the corner location on this record was determined by me or under my direction and control and that this U.S. Public Land Survey Monument Record is correct and complete to the best of my knowledge and belief.

Thomas A. Radenz
 Signature _____ Date 1/8/2002



Index No.

I - 22,22