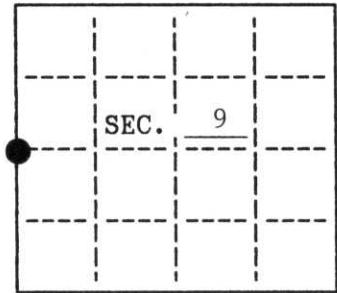


U. S. PUBLIC LAND SURVEY MONUMENT RECORD

Note: This form is intended and designed to fulfill all requirements of Wisconsin Administrative Code, Chapter A-E 7.08 U.S. Public Land Survey Monument Record (3)(a)(b)(c)(d)(e)(f)(g)(h)(i). An additional sheet may be added if necessary to conform with said requirements.

(a) CORNER LOCATION: State Plane Coordinates
 W $\frac{1}{4}$ corner of Sec. 9 X _____
 Township 34 North Y _____
 Range 6 East Datum Base _____
 Town/City Bradley County of Lincoln



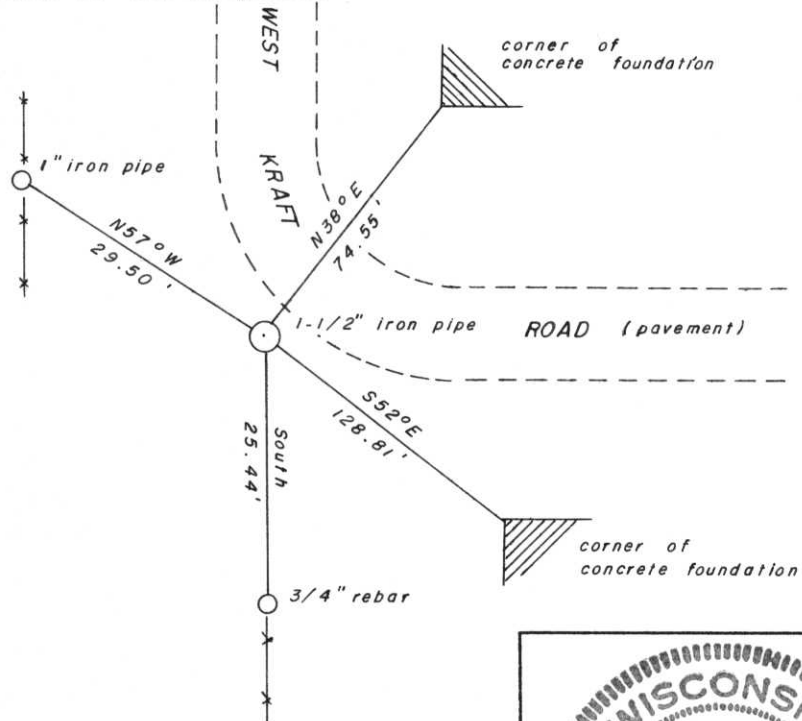
(b) HISTORY OF ORIGINAL CORNER ESTABLISHMENT
 Original Surveyor: Jackson Prentice
 Date of Survey: Commenced 1854
 Completed 1854

Original B.T.'S
 Ash 10" N41°E, 30 lks.
 Spruce 14" S88°W, 40 lks.

(b)(f)(g)(h) Description of monument found at this corner and if it was accepted, state all evidence (material, testimonial, occupational, plats, records, other monuments) used as a basis for accepting. If not accepted or if nothing was found, state evidence used as a basis for establishing location. If reestablished through lost corner proportionate methods, indicate all monuments, distances and directions used to establish. Indicate type of monument and sign post found or set.

- 1973 - William Stuth accepts iron pipe 6" under surface, no B.T.'s.
- 1977 - Lester Schmidt set 2" iron pipe.
- 1990 - I found and accepted a 1 $\frac{1}{2}$ " iron pipe pointed out to me by Bill Stuth to be the Quarter Corner he had in 1973. The computed location of the north sixteenth corner is in harmony with an existing 1" iron pipe further substantiating this corner location used in previous surveys.

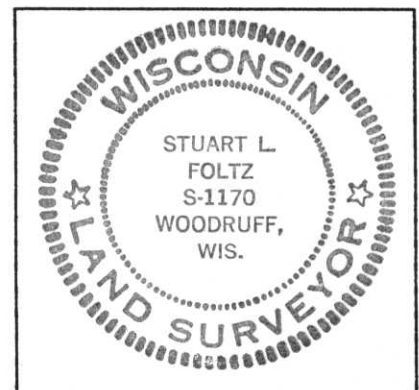
(c)(d)(e) Plan view of corner with ties to at least 4 witness monuments. If in disagreement with previously established corner, show the distances between the two corners and also indicate the ties to the disputed.



RECEIVED AT LINCOLN COUNTY
 COURTHOUSE THIS 20th DAY
 OF Feb 19 91
 Pat Prentice
 TAX DESCRIPTION OFFICE

(i) I, Stuart L. Foltz
 hereby certify that the corner location on this record was determined by me or under my direction and control and that this U.S. Public Land Survey Monument Record is correct and complete to the best of my knowledge and belief.

Stuart L. Foltz Signature 2/14/1991 Date



INDEX NO. G-9