

U.S. PUBLIC LAND SURVEY MONUMENT RECORD

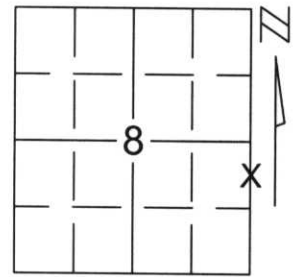
Note: This form is intended and designed to fulfill all requirements of Wisconsin Administrative Code, Chapter A-E 5.02, U.S. Public Land Survey Monument Record (3)(a)(b)(c)(d)(e)(f)(g)(h)(i). An additional sheet may be added if necessary to conform with said requirements.

(a) Corner location: Township 34 North

Range 6 East

Town/City/Village BRADLEY

County LINCOLN



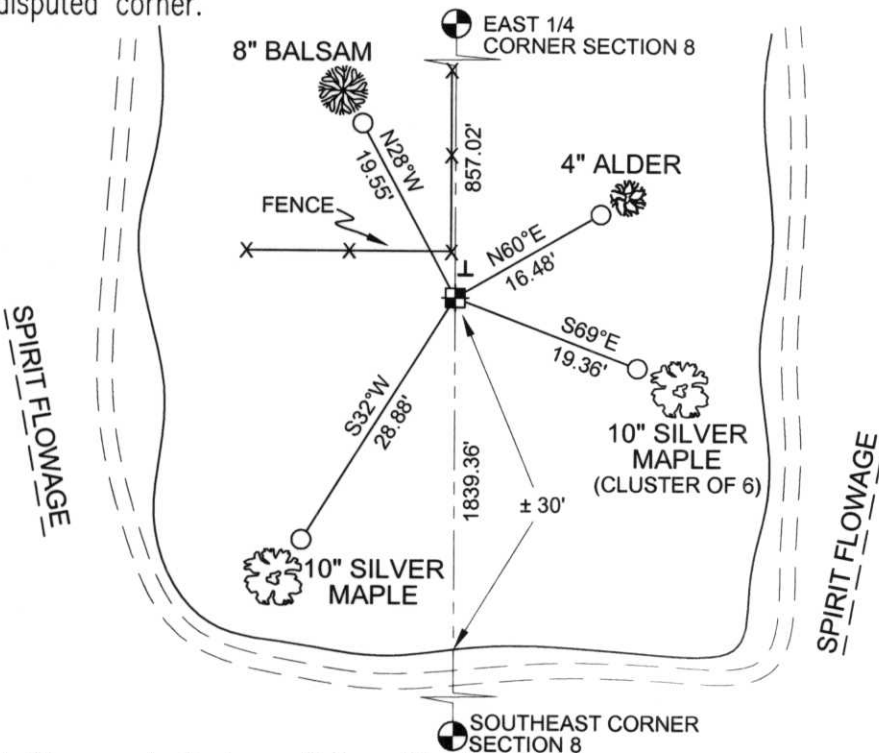
Section 8

(b)(f)(g)(h) Description of monument found at this corner and if it was accepted, state all evidence (material, testimonial, occupational, plats, records, other monuments) used as a basis for accepting. If not accepted or if nothing was found, state evidence used as basis for establishing location. If reestablished through lost corner proportionate methods, indicate all monuments, distances and directions used to establish.

In establishing the Northwest corner of Section 16 a found 3/4 inch re-bar at the North shore of the Spirit Flowage and an existing fence line from the North fit an existing fence on the South Shore of the flowage and a fence crossing a small island within the flowage. After extensive search for the original corner on the island the existing fence line was held for the East-West direction and the North-South direction was established by holding a straight line between the North 1/4 Corner of Section 17 and the calculated North 1/4 of Section 16. The Meander was then set by holding the existing position of a found 3/4 inch re-bar which is on a line between the East 1/4 of Section 8 and the Southeast Corner of Section 8 and is approximately 30 feet from the waters edge. Replaced found 3/4" bar with a Lincoln County Monument.

RECEIVED AT LINCOLN COUNTY
COURTHOUSE THIS 9TH DAY
OF January 20 02
Tom Dalkin

(c)(d)(e) Plan view of corner with ties to at least 4 witness monuments. If ~~land is different from previous~~ established corner, show the distances between the two corners and also indicate the ties to the disputed corner.



COORDINATES ARE REFERENCED TO THE LINCOLN COUNTY COORDINATE SYSTEM AS DEVELOPED BY THE WISCONSIN DEPARTMENT OF TRANSPORTATION AND WERE DETERMINED BY GPS OBSERVATIONS ON CONTROL POINTS AS SUPPLIED BY LINCOLN COUNTY.

BEARINGS ARE REFERENCED TO MAGNETIC NORTH.

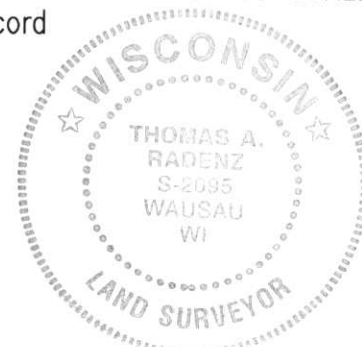
- ⊥ - SET VINYL "T" MARKER POST
- - SET 3/4" x 30" REBAR W/ ALUM. CAP 1' FROM BEARING TREE
- ⊠ - NORTH MEANDER CORNER FOR SE1/4 CORNER SET LINCOLN COUNTY MOUNMENT

NORTH

NOT TO SCALE

(i) I, Thomas A. Radenz, RLS certify that the corner location on this record was determined by me or under my direction and control and that this U.S. Public Land Survey Monument Record is correct and complete to the best of my knowledge and belief.

Signature *Thomas A. Radenz* Date 1/8/2002



Index No.

GH-9