

U.S. PUBLIC LAND SURVEY MONUMENT RECORD

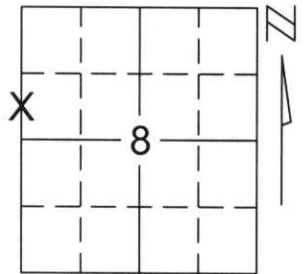
Note: This form is intended and designed to fulfill all requirements of Wisconsin Administrative Code, Chapter A-E 5.02, U.S. Public Land Survey Monument Record (3)(a)(b)(c)(d)(e)(f)(g)(h)(i). An additional sheet may be added if necessary to conform with said requirements.

(a) Corner location: Township 34 North

Range 6 East

Town/City/Village BRADLEY

County LINCOLN



Section 8

(b)(f)(g)(h) Description of monument found at this corner and if it was accepted, state all evidence (material, testimonial, occupational, plats, records, other monuments) used as a basis for accepting. If not accepted or if nothing was found, state evidence used as basis for establishing location. If reestablished through lost corner proportionate methods, indicate all monuments, distances and directions used to establish.

THE WEST 1/4 OF SECTION 8 FALLS IN THE SPIRIT RIVER FLOWAGE.

WE FOUND 3 IRONS AND A TIPPED 2"- 40 CORNER ALONG THE WEST LINE OF THE SOUTHWEST 1/4 OF SECTION 8.

WE REESTABLISHED THE WEST 1/4 CORNER BY HOLDING THE FOUND IRONS FOR LINE AND DOUBLED THE 40 DISTANCE FROM LESTER SCHMIDT'S "PLAT OF SURVEY". THIS LOCATION DOES NOT FIT THE FENCE LINE TO THE NORTH OF THE SPIRIT RIVER BUT THE FENCE RUNS AT AN ANGLE TO THE SOUTHWEST.

SET A LINCOLN COUNTY MONUMENT ON LINE FROM CALCULATED WEST 1/4 AND FOUND NORTHWEST 1/4, 21 FEET NORTH OF THE SPIRIT RIVER FLOWAGE.

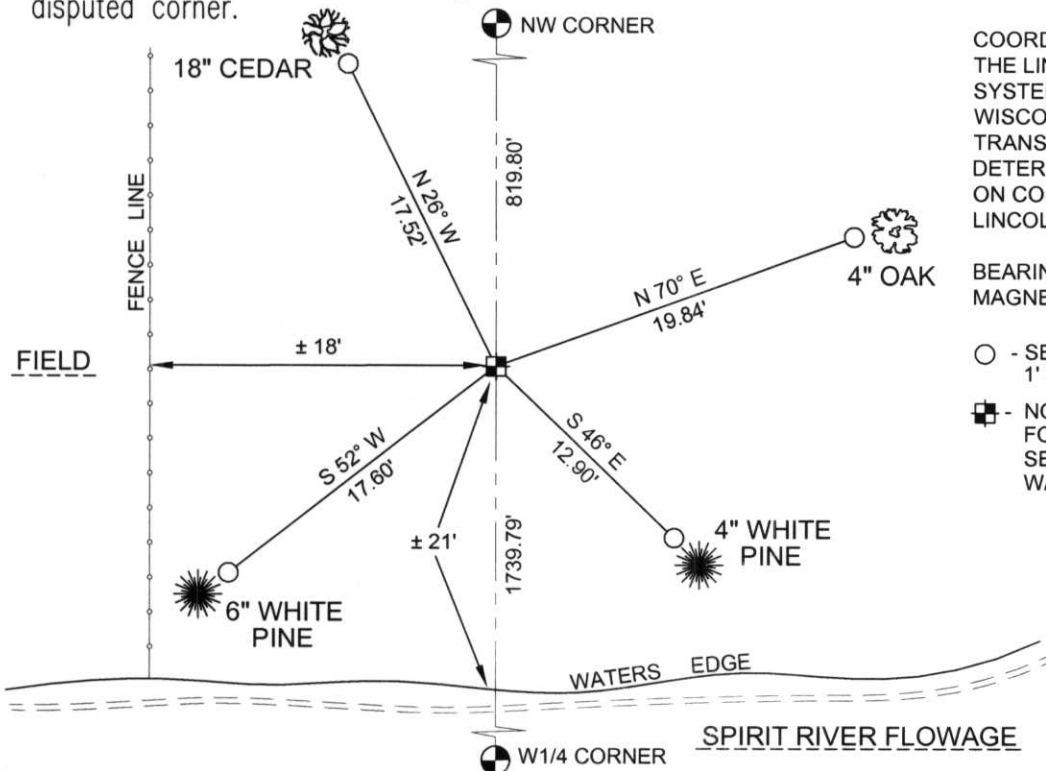
TIED OUT MONUMENT TO PERPETUATE MEANDER CORNER LOCATION.

RECEIVED AT LINCOLN COUNTY
COURTHOUSE THIS 9TH DAY

OF January 20 02

Tom Radenz
LAND INFORMATION OFFICE

(c)(d)(e) Plan view of corner with ties to at least 4 witness monuments. If in disagreement with previously established corner, show the distances between the two corners and also indicate the ties to the disputed corner.



COORDINATES ARE REFERENCED TO THE LINCOLN COUNTY COORDINATE SYSTEM AS DEVELOPED BY THE WISCONSIN DEPARTMENT OF TRANSPORTATION AND WERE DETERMINED BY GPS OBSERVATIONS ON CONTROL POINTS AS SUPPLIED BY LINCOLN COUNTY.

BEARINGS ARE REFERENCED TO MAGNETIC NORTH.

- - SET 3/4" x 30" REBAR W/ ALUM CAP 1' FROM BEARING TREE
- ⊕ - NORTH MEANDER CORNER FOR WEST 1/4 CORNER SET LINCOLN COUNTY MONUMENT W/ ALUM CAP

NORTH
↑
NOT TO SCALE

(i) I, Thomas A. Radenz, RLS certify that the corner location on this record was determined by me or under my direction and control and that this U.S. Public Land Survey Monument Record is correct and complete to the best of my knowledge and belief.

Thomas A. Radenz Signature
1/8/2002 Date



Index No.

FG-5