

U.S. PUBLIC LAND SURVEY MONUMENT RECORD

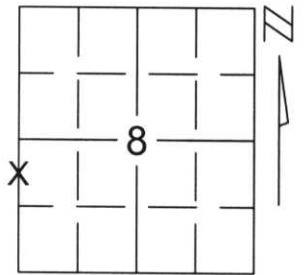
Note: This form is intended and designed to fulfill all requirements of Wisconsin Administrative Code, Chapter A-E 5.02, U.S. Public Land Survey Monument Record (3)(a)(b)(c)(d)(e)(f)(g)(h)(i). An additional sheet may be added if necessary to conform with said requirements.

(a) Corner location: Township 34 North

Range 6 East

Town/City/Village BRADLEY

County LINCOLN



Section 8

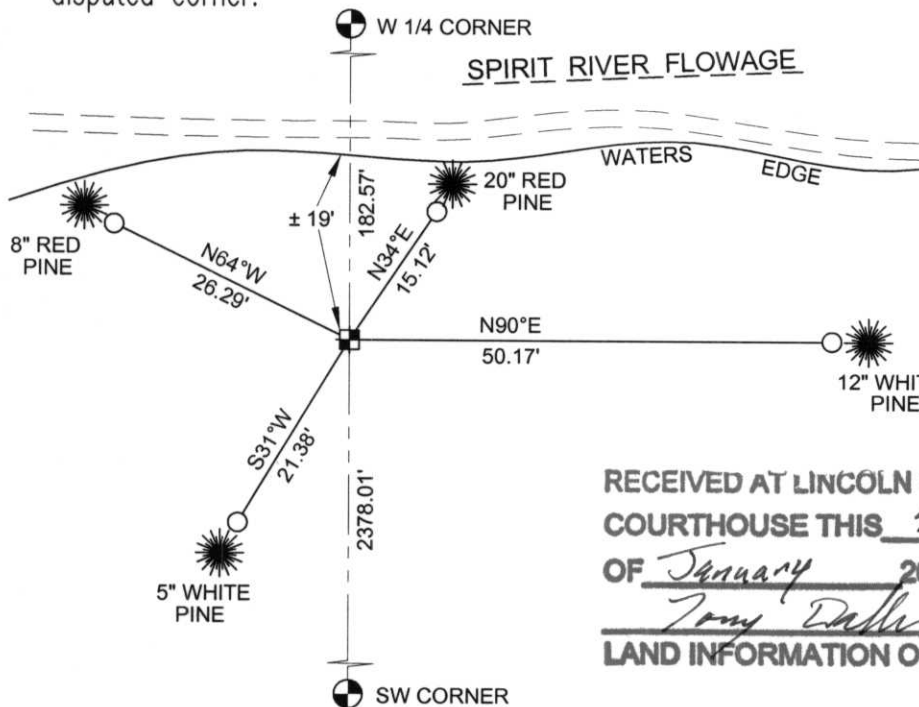
(b)(f)(g)(h) Description of monument found at this corner and if it was accepted, state all evidence (material, testimonial, occupational, plats, records, other monuments) used as a basis for accepting. If not accepted or if nothing was found, state evidence used as basis for establishing location. If reestablished through lost corner proportionate methods, indicate all monuments, distances and directions used to establish.

THE WEST 1/4 CORNER OF SECTION 8 FALLS IN THE SPIRIT RIVER FLOWAGE. WE FOUND 3 IRONS AND A TIPPED 2" IRON 40 CORNER ALONG THE WEST LINE OF THE SOUTHWEST 1/4 OF SECTION 8.

WE REESTABLISHED THE WEST 1/4 CORNER BY HOLDING FOUND IRONS FOR LINE AND DOUBLED THE 40 DISTANCE FROM LESTER SCHMIDT'S "PLAT OF SURVEY". THIS LOCATION DOES NOT FIT THE FENCE LINE TO THE NORTH OF THE SPIRIT RIVER BUT THE FENCE RUNS AT AN ANGLE TO THE SOUTHWEST.

WE REPLACED THE ONE INCH IRON PIPE WITH A LINCOLN COUNTY MONUMENT. TIED OUT MONUMENT TO PERPETUATE MEANDER CORNER LOCATION.

(c)(d)(e) Plan view of corner with ties to at least 4 witness monuments. If in disagreement with previously established corner, show the distances between the two corners and also indicate the ties to the disputed corner.



COORDINATES ARE REFERENCED TO THE LINCOLN COUNTY COORDINATE SYSTEM AS DEVELOPED BY THE WISCONSIN DEPARTMENT OF TRANSPORTATION AND WERE DETERMINED BY GPS OBSERVATIONS ON CONTROL POINTS AS SUPPLIED BY LINCOLN COUNTY.

BEARINGS ARE REFERENCED TO MAGNETIC NORTH.

- - SET 3/4" x 30" REBAR W/ ALUM CAP 1' FROM BEARING TREE
- ⊠ - SOUTH MEANDER CORNER FOR W 1/4 CORNER SET LINCOLN COUNTY MONUMENT W/ ALUM CAP

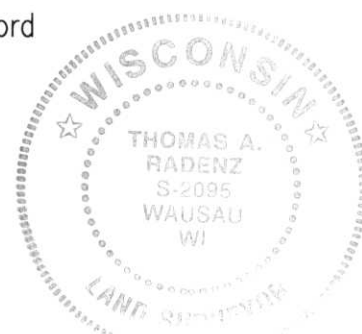
RECEIVED AT LINCOLN COUNTY COURTHOUSE THIS 9TH DAY OF January 20 02
Tony Dallen
LAND INFORMATION OFFICE

NORTH

NOT TO SCALE

(i) I, Thomas A. Radenz, RLS certify that the corner location on this record was determined by me or under my direction and control and that this U.S. Public Land Survey Monument Record is correct and complete to the best of my knowledge and belief.

Thomas A. Radenz
Signature _____ Date 1/8/2002



Index No.

GH-5