

LINCOLN COUNTY U.S. PUBLIC LAND SURVEY MONUMENT LOCATION RECORD

SECTION 7
TOWNSHIP 34 N
RANGE 6 E

E-3
NO.

LANDMARK BENCHMARK
CORNER IDENTITY: BERNTSEN SNM1 STEEL NAIL MARKER

FOUND
SET
RESET
RE-TIED

BRADLEY
CITY, VILLAGE, TOWN

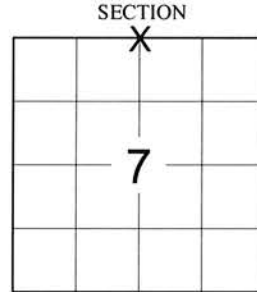
LINCOLN COUNTY COORDINATE: N: 222115.521
E: 367524.043

ELEVATION-(FEET): _____ DATUM: 83 (2011)

WEATHER: CLOUDY

DATE OF SURVEY: 07/02/2019 TEMPERATURE: 70 °F

SURVEY PARTY: KEITH WALKOWSKI AND AUSTIN PELOT



LOCATION
(Indicated By X)



BASIS FOR MONUMENT LOCATION:

(DESCRIBE METHOD OF SURVEY AND CORNER AUTHENTICATION)

SEARCHED FOR THE NORTH 1/4 CORNER OF SECTION 7 BEFORE THE START OF THE RESURFACING PROJECT ON HWY "86" AND FOUND A MAG NAIL AND ALL 4 TIES FROM THE 1995 TIE SHEET BY CHARLES R. WINKLER. RESET 2 OF THE ALUMINUM BERNTSEN MONUMENTS HEAVING OUT OF THE GROUND. SET A BERNTSEN SNM1 STEEL NAIL MARKER AT THE CORNER UPON COMPLETION OF THE STH 86 RESURFACING PROJECT TO PERPETUATE THE CORNER LOCATION AS SHOWN BELOW.



CERTIFIED CORRECT:

Keith J. Walkowski

KEITH J. WALKOWSKI S-2717
Professional Land Surveyor

DATE: OCTOBER 15TH, 2019

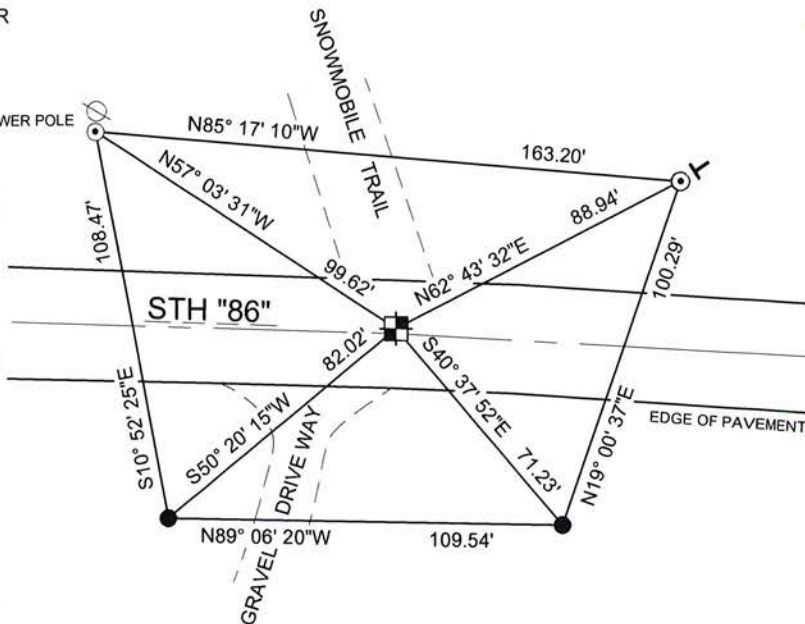
FIELD BOOK NO. NA PAGE NO. NA

COMPANY RIVERSIDE LAND SURVEYING LLC

TIE SKETCH:

- SET BERNTSEN SNM1 STEEL NAIL MARKER
- RESET ALUM. BERNTSEN MONUMENT
- FOUND 1" O.D. IRON PIPE
- EXISTING UTILITY POLE
- SET VINYL "T" POST

RECEIVED BY LINCOLN COUNTY
SURVEYOR THIS 12TH DAY
OF November 20 19
Jerry Dahl
COUNTY SURVEYOR



NOTE: CORNER IS 1.5' NORTH OF CENTERLINE

BEARINGS ARE BASED ON THE LINCOLN COUNTY COORDINATE SYSTEM NAD 83 (2011) AND REFERENCED AS SHOWN

THIS DRAWING IS NOT TO SCALE

E-3
NO.

U.S. PUBLIC LAND SURVEY MONUMENT RECORD

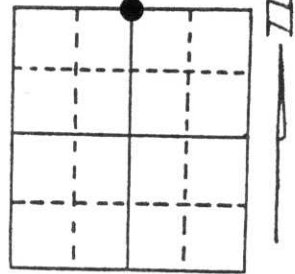
Note: This form is intended and designed to fulfill all requirements of Wisconsin Administrative Code, Chapter A-E 5.02, U.S. Public Land Survey Monument Record (3) (a) (b) (c) (d) (e) (f) (g) (h) (i). An additional sheet may be added if necessary to conform with said requirements.

(a) Corner location: Township 34 North

Range 6 East

Town/City/Village Bradley

County Lincoln

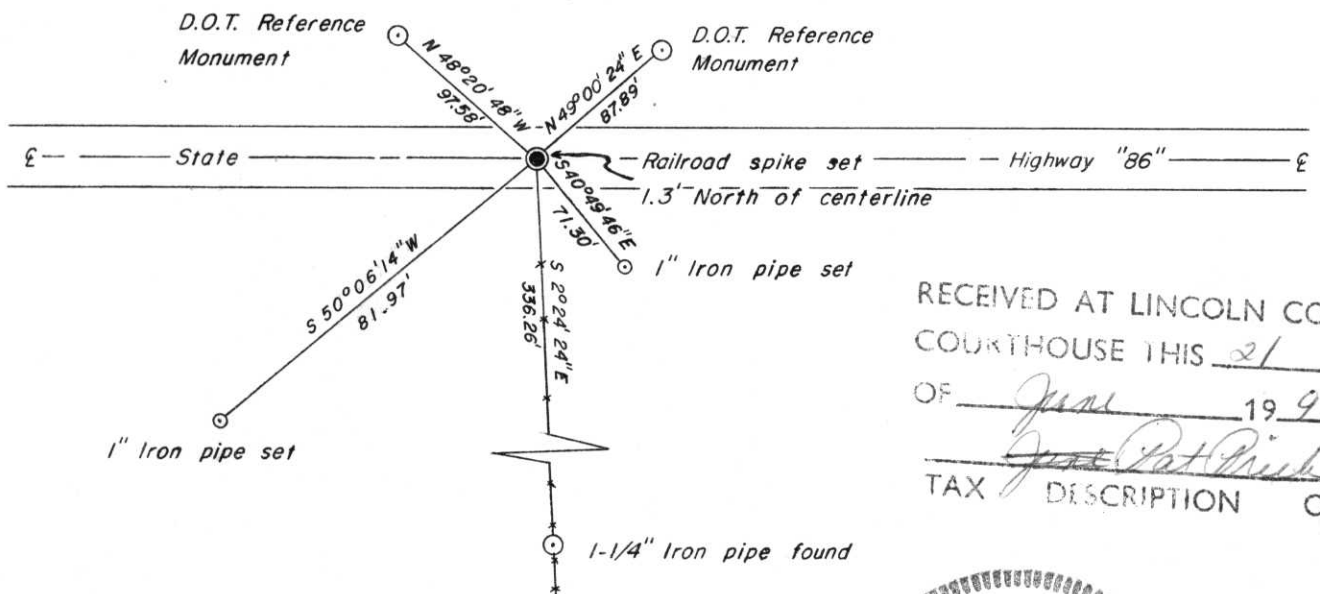


Section 7

(b) (f) (g) (h) Description of monument found at this corner and if it was accepted, state all evidence (material, testimonial, occupational, plats, records, other monuments) used as a basis for accepting. If not accepted or if nothing was found, state evidence used as basis for establishing location. If reestablished through lost corner proportionate methods, indicate all monuments, distances and directions used to establish.

- January, 1855 - Jackson Prentice, Deputy Surveyor, set 1/4 post. Bearing trees: 14" Pine, S1°E, 20 lks; 12" Pine, N15°W, 18 lks.
- 1967 - James Griffin, Registered Land Surveyor, plat of Spirit Haven Subdivision, identifies corner being monumented with an iron pipe. Bearing trees: 9" White Pine, N30°E, 59.4 feet; 12" Tamarack, N38°W, 82.8 feet.
- 1985 - Lester Schmidt, Registered Land Surveyor, Dwg. No. 588, identifies corner as being in place.
- 1988 - James D. Rein, Registered Land Surveyor, found a P.K. nail for corner position. Existing bearing trees: 17" White Pine, N29°E, 59.4 feet; 10" Tamarack (down), N38°W, 83.3 feet. A 2" iron pipe bears S2°13'04"E, 33 feet which is the monument for the NE corner of the plat of Spirit Haven Division 2.
- 1944 - Due to highway reconstruction, corner was missing. I set a railroad spike for corner position by using information from the plat of Spirit Haven Division 2.

(c) (d) (e) Plan view of corner with ties to at least 4 witness monuments. If in disagreement with previously established corner, show the distances between the two corners and also indicate the ties to the disputed corner.



RECEIVED AT LINCOLN COUNTY
COURTHOUSE THIS 21 DAY
OF June 1995
James Pat Pischer
TAX DESCRIPTION OFFICE

(i) I, Charles E. Winkler S-1431

(type or print name) certify that the corner location on this record was determined by me or under my direction and control and that this U.S. Public Land Survey Monument Record is correct and complete to the best of my knowledge and belief.

Charles E. Winkler 11/30/1994
Signature Foltz & Associates, Inc. Date



Index No. E-3

FIELD SURVEY NOTES

E-D-702 6-70

RECEIVED JUN 18 1991

N 1/4 CORNER SEC 7

T34N R6E

State of Wisconsin / Department of Transportation

E-3

1-9-91

CORNER E3 T34N, R6E

FOUND EXISTING REF MONUMENTS

SET BY REYN



TOPOGRAPHY

CORNER ALIGNMENT

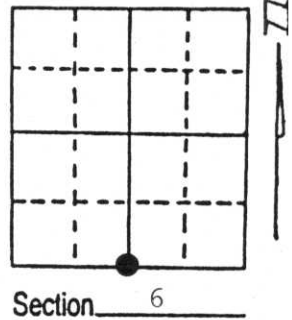
U.S. PUBLIC LAND SURVEY MONUMENT RECORD

Note: This form is intended and designed to fulfill all requirements of Wisconsin Administrative Code, Chapter A-E 7.08 U.S. Public Land Survey Monument Record (3) (a) (b) (c) (d) (e) (f) (g) (h) (i). An additional sheet may be added if necessary to conform with said requirements.

(a) Corner location: Township 34 North
 Range 6 East/West

Town/City/Village Bradley

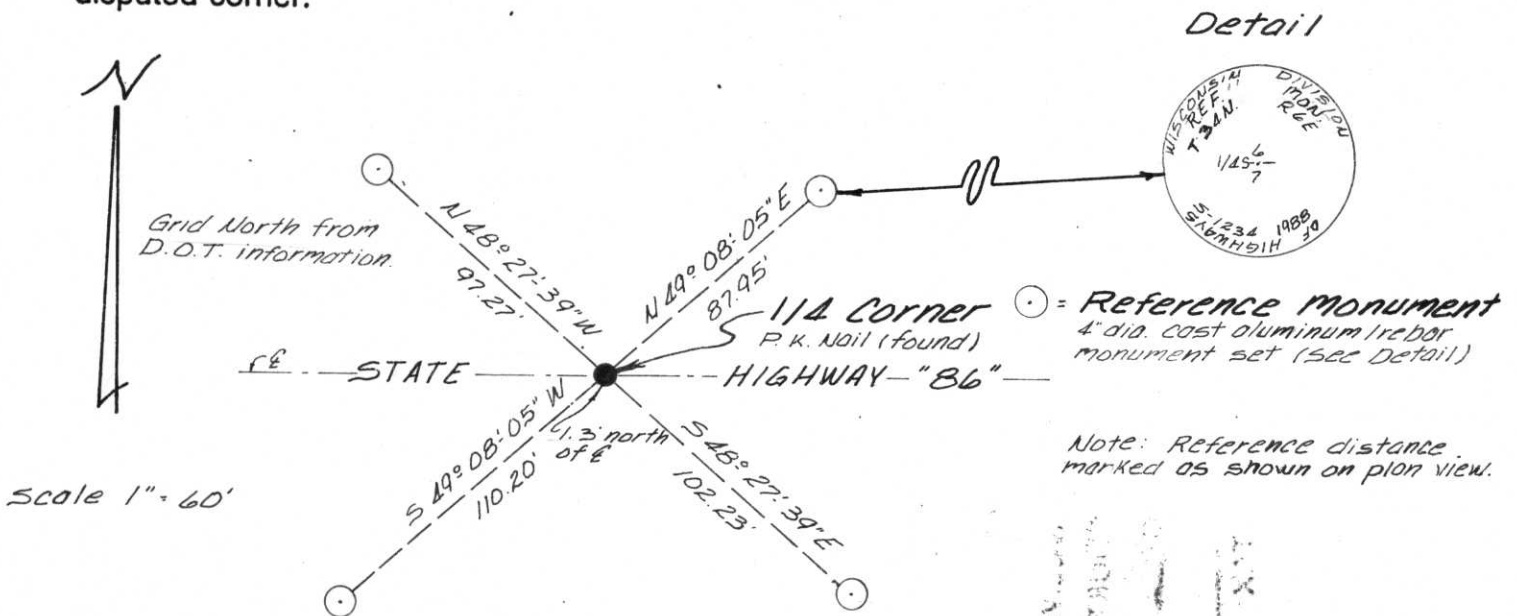
County Lincoln



(b) (f) (g) (h) Description of monument found at this corner and if it was accepted, state all evidence (material, testimonial, occupational, plats, records, other monuments) used as a basis for accepting. If not accepted or if nothing was found, state evidence used as basis for establishing location. If reestablished through lost corner proportionate methods, indicate all monuments, distances and directions used to establish.

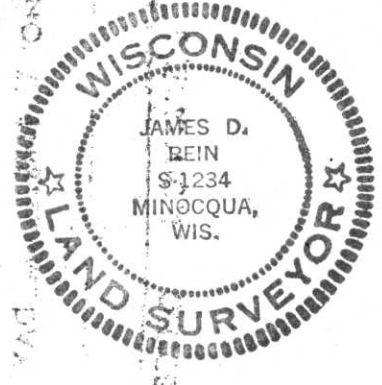
- January 1855 - Jackson Prentice, Deputy Surveyor, set $\frac{1}{4}$ post Bearing trees: 14" Pine S1°E, 20 links; 12" Pine N15°W, 18 links.
- June 27, 1967 - James Griffen, Registered Land Surveyor, plat of Spirit Haven Subdivision identifies corner being monumented with an iron pipe. Bearing trees: 9" White Pine N30°E, 59.4 feet; 12" Tamarack N38°W, 82.8 feet.
- October 9, 1985 - Lester Schmidt, Registered Land Surveyor, Dwg. No. 588... identifies corner as being in place.
- Nov. 10, 1988 - James D. Rein, Registered Land Surveyor, found a P.K. nail for corner position. Existing Bearing trees: 17" W. Pine N29°E, 59.4 feet; 10" Tamarack (down) N38°W, 83.3 feet. A 2" iron pipe bears S2°13'04"E, 33.00 feet which is the monument for the northeast corner of the Plat of Spirit Haven Division 2.

(c) (d) (e) Plan view of corner with ties to at least 4 witness monuments. If in disagreement with previously established corner, show the distances between the two corners and also indicate the ties to the disputed corner.



(i) I, James D. Rein RLS No. 1234
 (type or print name) certify that the corner location on this record was determined by me or under my direction and control and that this U.S. Public Land Survey Monument Record is correct and complete to the best of my knowledge and belief.

James D. Rein Signature
 December 9th, 1988 Date



Index No. E-3

