

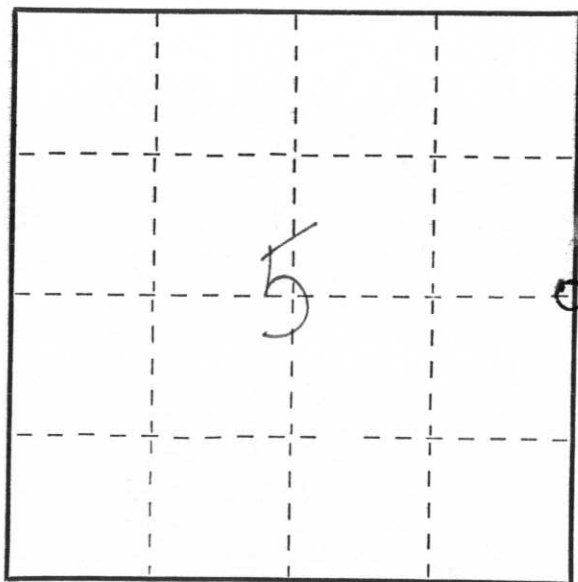
CERTIFIED LAND CORNER RESTORATION

Index No. C-9

State of Wisconsin }
 County of Lincoln } ss.

I, _____, do hereby certify that on the 22nd day of November, 1974, I found evidence of the East Quarter corner of Section 5 Township 34, North, Range 6 East, Fourth, Principal Meridian, as described hereon; and that from this evidence I established a new monument and accessories as described hereon to perpetuate the original location of this corner.

Resident witnesses:



○ = Corner monument restored.

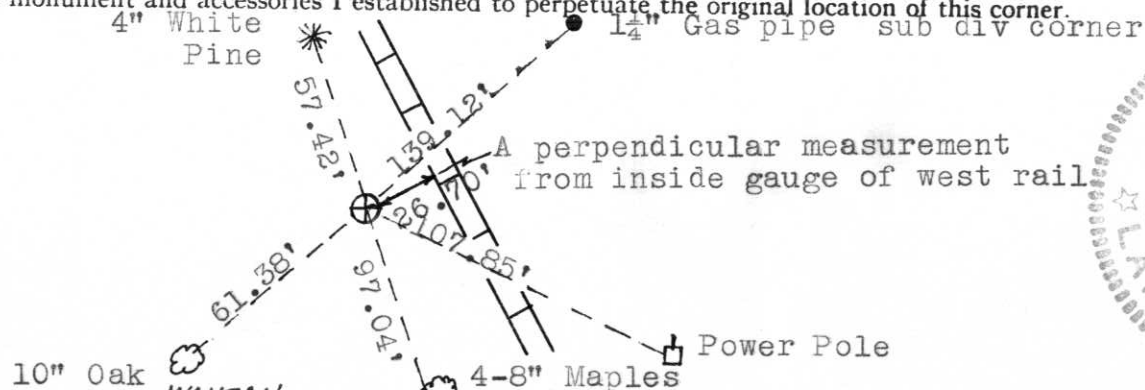
History of original corner establishment:

The original government survey was done in 1855 ±. A corner post was set at 40.00 chains from southeast section corner and witnessed. The bearing trees called for are a 11" tamarac S77°E at 17 links, and a 10" tamarac S22°W at 18 links.

Description of corner evidence found:

Several blazed trees were found in the area. No original bearing trees. Corner location was established by single proportionate measurement. Prorated in accordance with original government notes. Set Bernstein monument and located bearing trees and accessories.

Description of monument and accessories I established to perpetuate the original location of this corner.



Dated at WAUSAU, Wis., this 27TH day of NOVEMBER, 1974.

Signature Edwin R. Abendroth Title MARATHON CO. SURVEYOR Registration No. 5-798
 (County Surveyor, Registered Land Surveyor, or other duly authorized official)

Office of Register of Deeds, County of _____, I hereby certify that the within instrument was filed in this office for record on the _____ day of _____, 19____ at _____ o'clock _____ M.

 (Register of Deeds)

By _____ Deputy