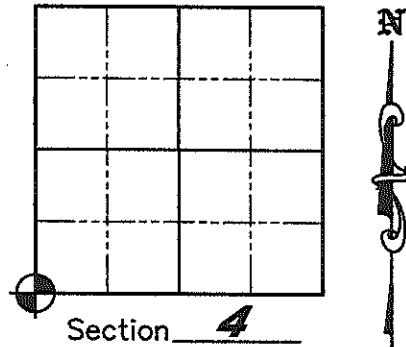


U.S. PUBLIC LAND SURVEY MONUMENT RECORD

NOTE: This form is intended and designed to fulfill all requirements of Wisconsin Administrative Code, Chapter A-E 7 .08 U.S. Public Land Survey Monument Record (3)(a)(b)(c)(d)(e)(f)(g)(h)(i). An additional sheet may be added if necessary to conform with said requirements.

(a) Corner location: Township 34 North
 Range 6 East
 Town of Bradley
 County of Lincoln



(b)(f)(g)(h) Description of monument found at this corner and if it was accepted, state all evidence (material, testimonial, occupation, plats, records, other monuments) used as a basis for accepting. If not accepted or if nothing was found, state evidence used as a basis for establishing location. If reestablished through lost corner proportionate methods, indicate all monuments, distances and directions used to establish. Indicate type of monument found or set and sign post.

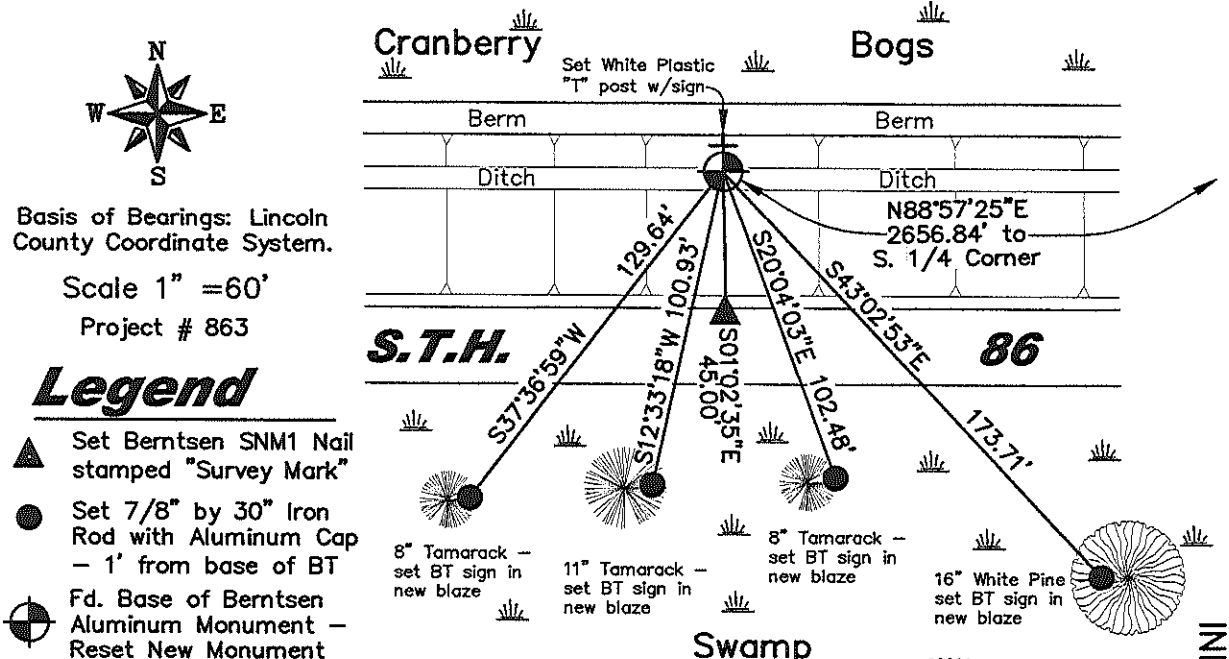
December 24, 1854-January 5, 1855 - Jackson Prentice set wood Section post with bearing trees: Spruce 18° N60°E, 70 links, Tamarack 8° S30°W, 167 links.

July 7, 1985 - U.S. Public Land Survey Monument Record by Lester Schmit, he found a 1-1/2" iron pipe for the corner, 16.3' North of the centerline of S.T.H. "86". Replaced pipe with Berntsen Monument - set witnesses: 6" Aspen, N73°E, 35.62'; 6" Tamarack, S33°E, 64.35'; 4" by 4" Wood Post, S03°E, 49.09', 7" Tamarack, S31°W, 85.69', 5/8" Iron Rod, S88°W, 19.02'.

April 10, 1991 - Record and Certification of U.S. Public Land Survey Control Station by WisDOT by Crew Chief R.B. Johnson - found a Berntsen Monument - set 5/8" by 24" rebars w/red caps for witnesses: N73°E, 78.72'; N83°W, 117.79'; N87°W, 199.94'; N89°W, 241.98'.

March-July, 2009 - Matthew E. Hogle found base of broken Berntsen Monument approximately 1-1/2' deep in North ditch of S.T.H. "86". As S.T.H. "86" was reconstructed and moved South, all 1985 ties from Lester Schmit are gone. Also, recent grading and berming of the cranberry bogs to the North destroyed all 1991 ties by the DOT. Verified corner position by a retracement of maps: M319A, M177B, and M129A of Lincoln County Surveyors Records and an unfiled map by MSA Professional Services for Project No. 980509 dated 1/26/2004. Additional survey data shown on Certified Survey Map No. 2200. Reset new Berntsen Monument - set large rock mound all around monument to stabilize corner and set new witnesses as shown below.

(c)(d)(e) Plan view of corner with ties to at least 4 witness monuments. If in disagreement with previously established corner, show the distances between the two corners and also indicate the ties to the disputed corner.



Basis of Bearings: Lincoln County Coordinate System.

Scale 1" = 60'

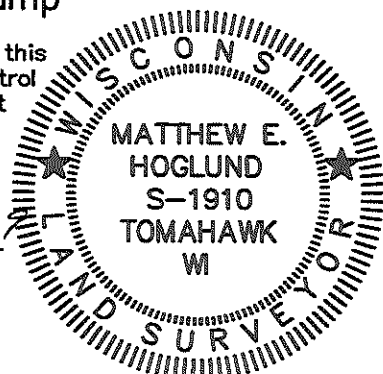
Project # 863

Legend

- ▲ Set Berntsen SNM1 Nail stamped "Survey Mark"
- Set 7/8" by 30" Iron Rod with Aluminum Cap - 1' from base of BT
- ⊙ Fd. Base of Berntsen Aluminum Monument - Reset New Monument

(i) I, Matthew E. Hogle, certify that the corner location on this record was determined by me under my direction and control and that this U.S. Public Land Survey Monument is correct and complete to the best of my knowledge and belief.

Matthew E. Hogle
 Signature Date 10/21/2009



INDEX NO. E-9

RECORD AND CERTIFICATION OF U.S. PUBLIC LAND SURVEY CONTROL STATION

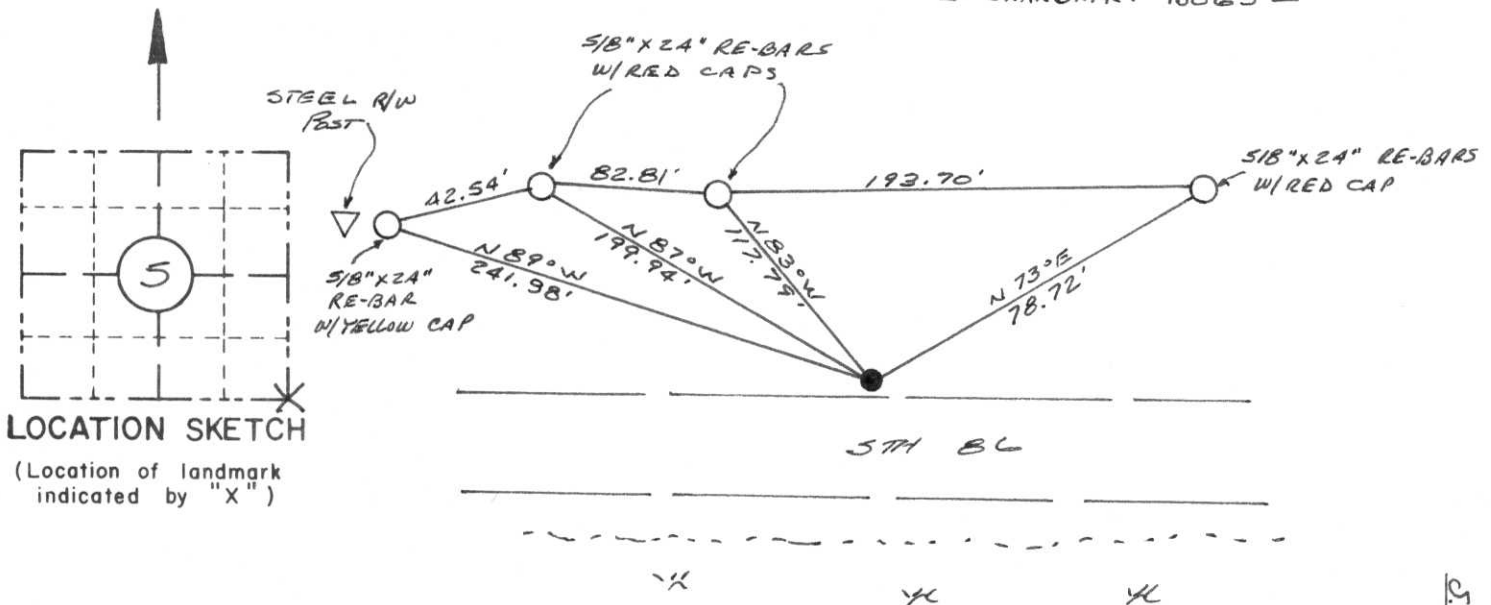
E-D-716-72

State of Wisconsin / Department of Transportation

District 7	Project I. D. 9215-06-00	Located by R. B. JOHNSON - SURVEY CREW CHIEF		
Corner SE COR SECTION	Township 34 N	Range (E,W) 6 E	County LINCOLN	
Wisconsin Coordinates CORNER	East (X) 2,063,055.59	North (Y) 590,783.51	Elevation (Z)	Zone C
Control Station Name	East (X)	North (Y)	Elevation (Z)	Zone
Horizontal — NORTH AMERICAN, 1927		CONTROL DATUM Vertical — MEAN SEA LEVEL, 1929 ADJUSTMENT		
Horizontal — 2ND Order		SURVEY CONTROL Vertical — _____ Order		

SKETCH

— CRANBERRY BOGS —



LOCATION SKETCH
(Location of landmark indicated by "X")

I hereby certify that on the 10TH day of APRIL 1991, that I did locate the above corner which was evidenced by A BERNTSEN ALUMINUM MONUMENT; I further certify that to perpetuate the location of such corner I did, at the exact location thereof, place a permanent marker consisting of _____

_____ ; I further certify that I did establish 4 references or witness monuments consisting of 5/8" x 24" RE-BARS WITH D.O.T. PLASTIC CAPS

located as shown above:

SEAL

Signature Registered Land Surveyor	Registration No. S--	Title
------------------------------------	-------------------------	-------

CORNER
S.E. COR.
SECTION
5
TOWN
34 N
RANGE
6 E

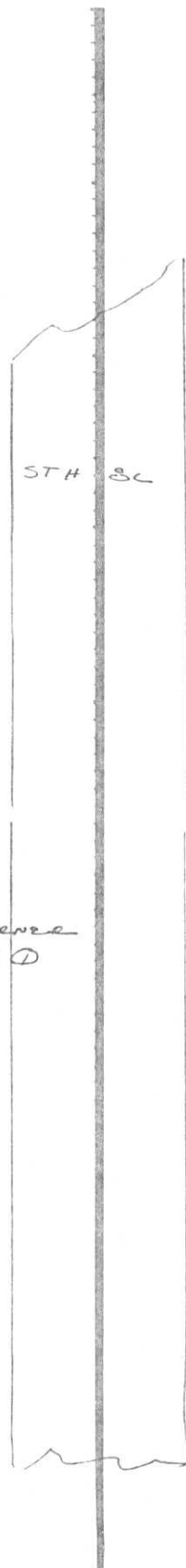
FIELD SURVEY NOTES

E-D-702 6-70

State of Wisconsin / Department of Transportation

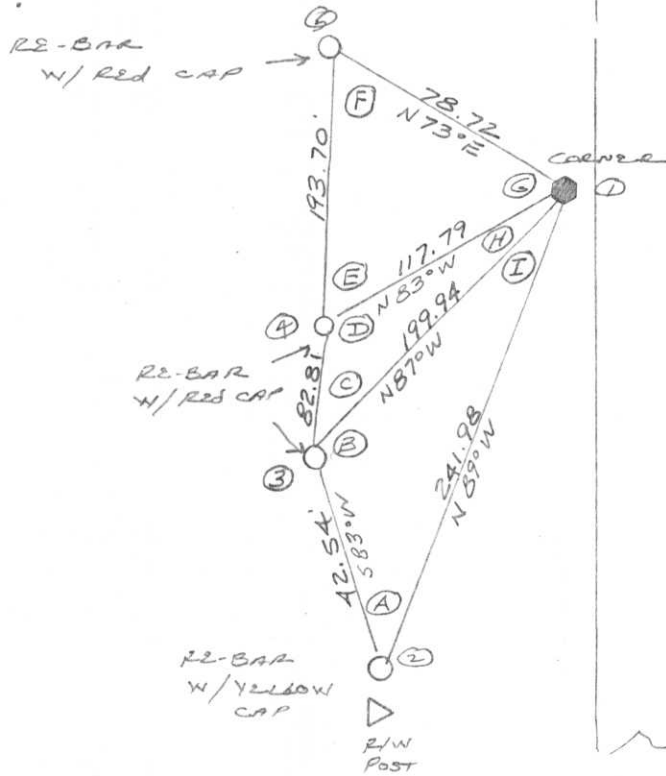
COR. E9 T34N-R6E
BERNSTEN MON.

APRIL 10 1991
RBJ, SM, GS, BT



ANGLES:

A = 7° 58' 14"
 B = 170° 20' 20"
 C = 5° 32' 55"
 D = 170° 33' 13"
 E = 7° 54' 38"
 F = 11° 53' 02"
 G = 160° 12' 20"
 H = 3° 53' 52"
 I = 1° 41' 26"



	4	DIST.
1-2	0	241.98
1-3	1° 41' 26"	199.94
1-4	5° 35' 58"	117.790
1-5	165° 47' 38"	78.72

- TOPOGRAPHY
- SURVEY ALIGNMENT

E-9

FIELD SURVEY NOTES

E-D-702 6-70

RECEIVED JUN 18 1991

NE Corner Sec 8
T34N R6E.

State of Wisconsin / Department of Transportation

COR. E9 T34N-R6E
BERNSTEIN MON.

APRIL 10 1991

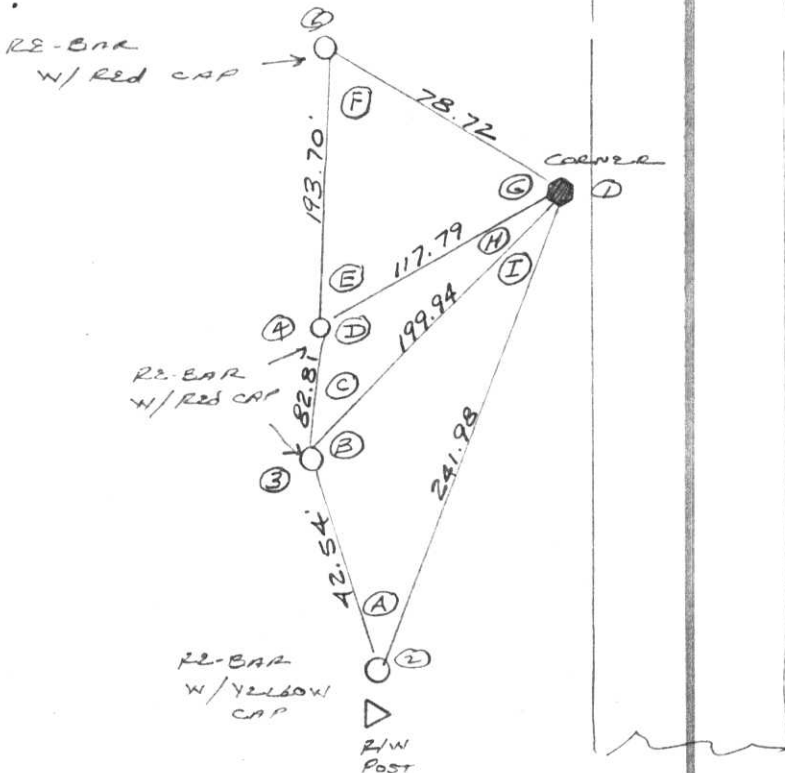
RBJ, SM, GS, BT



STH 3L

ANGLES:

- A = 7° 58' 14"
- B = 170° 20' 20"
- C = 5° 32' 55"
- D = 170° 33' 13"
- E = 7° 54' 38"
- F = 11° 53' 02"
- G = 160° 12' 20"
- H = 3° 53' 52"
- I = 1° 41' 26"



	+	DIET
1-2	0	241.98
1-3	1° 41' 26"	199.94
1-4	5° 35' 58"	117.790
1-5	165° 47' 38"	78.72

TOPOGRAPHY

ALIGNMENT

