

LINCOLN COUNTY U.S. PUBLIC LAND SURVEY MONUMENT LOCATION RECORD

SECTION 4
TOWNSHIP 34 N
RANGE 6 E

E-11
NO.

LANDMARK BENCHMARK _____
CORNER IDENTITY: BERNTSEN ALUMINUM MONUMENT

FOUND
SET
RESET
RE-TIED

LINCOLN COUNTY COORDINATE: N: 222138.639
E: 378236.032

ELEVATION-(FEET): _____ DATUM: _____

WEATHER: PARTLY CLOUDY

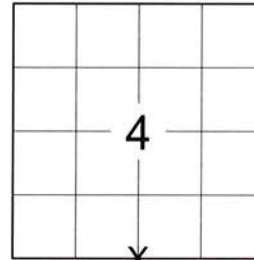
DATE OF SURVEY: 07/02/2019 TEMPERATURE: 75 °F

SURVEY PARTY: KEITH WALKOWSKI AND AUSTIN PELOT

TOMAHAWK

CITY, VILLAGE, TOWN

SECTION



LOCATION
(Indicated By X)



BASIS FOR MONUMENT LOCATION:
(DESCRIBE METHOD OF SURVEY AND CORNER AUTHENTICATION)

SEARCHED FOR THE SOUTH 1/4 CORNER OF SECTION 4 AND FOUND A SMP NAIL ALONG WITH 4 OUT OF 5 TIES FROM THE 2009 TIESHEET BY MATTHEW E. HOGLUND. ACCEPTED THE FOUND SMP AS THE CORNER AND ADDED ADDITIONAL TIES AND SET A BERNTSEN ALUMINUM MONUMENT AT THE CORNER UPON COMPLETION OF THE STH "86" RESURFACING PROJECT TO PERPETUATE THE CORNER LOCATION AS SHOWN BELOW.



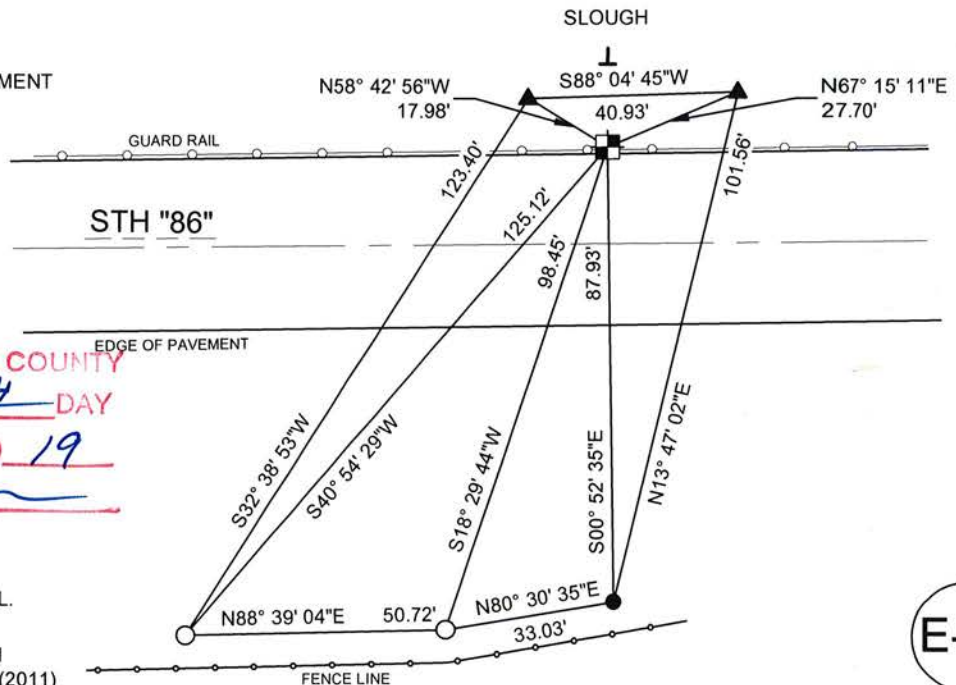
FIELD BOOK NO. NA PAGE NO. NA

COMPANY RIVERSIDE LAND SURVEYING LLC

CERTIFIED CORRECT:
Keith J. Walkowski
KEITH J. WALKOWSKI S-2717
Professional Land Surveyor
DATE: OCTOBER 15TH, 2019

TIE SKETCH:

- SET BERNTSEN ALUMINUM MONUMENT
- - FOUND 3/4" REBAR
- - FOUND 1" O.D. IRON PIPE
- ▲ - SET BERNTSEN SSDR-130
- T - FOUND VINYL "T" POST



RECEIVED BY LINCOLN COUNTY
SURVEYOR THIS 12TH DAY
OF November 20 19
Tony Dahl
COUNTY SURVEYOR

NOTE: CORNER LIES UNDER GUARD RAIL.

BEARINGS ARE BASED ON THE LINCOLN COUNTY COORDINATE SYSTEM NAD 83 (2011) AND REFERENCED AS SHOWN

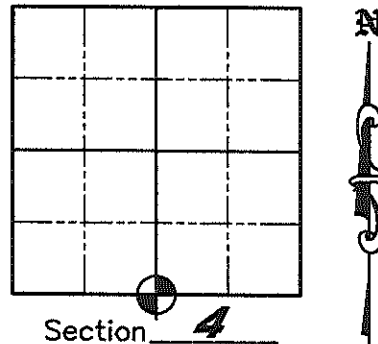
THIS DRAWING IS NOT TO SCALE

E-11
NO.

U.S. PUBLIC LAND SURVEY MONUMENT RECORD

NOTE: This form is intended and designed to fulfill all requirements of Wisconsin Administrative Code, Chapter A-E 7.08 U.S. Public Land Survey Monument Record (3)(a)(b)(c)(d)(e)(f)(g)(h)(i). An additional sheet may be added if necessary to conform with said requirements.

(a) Corner location: Township 34 North
 Range 6 East
 Town of Bradley
 County of Lincoln



(b)(f)(g)(h) Description of monument found at this corner and if it was accepted, state all evidence (material, testimonial, occupation, plats, records, other monuments) used as a basis for accepting. If not accepted or if nothing was found, state evidence used as a basis for establishing location. If reestablished through lost corner proportionate methods, indicate all monuments, distances and directions used to establish. Indicate type of monument found or set and sign post.

December 24, 1854 - January 5, 1855: Jackson Prentice set wood Section post with bearing trees: Tamarack 10° S86°E, 260 links, Pine 10° N80WE, 28 links.

1948 - "Lake Mohawksin Add. City of Tomahawk" plat, L.M. Peters accepts concrete monument.

1973 - William Stuth accepts concrete monument, 12" under surface, 16.5' N. of road centerline, no BT's.

May 14, 1987 - Field Notes by WisDOT found a 4" x 4" concrete monument buried 1-1/2' and set rebar w/yellow cap witness monuments: S46°E, 102.94'; S19°E, 87.88'; S14°W, 98.39'; S36°W, 125.13'. May 14, 1991 - Record and Certification of U.S. Public Land Survey Control Station by WisDOT by Crew Chief R.B. Johnson of same.

February 14, 1991 - U.S. Public Land Survey Monument Record by Stuart Foltz, he found a 4" square concrete monument for the corner on the north edge of S.T.H. "86". Witnesses: DOT iron rod - S41°53'59"E, 102.95'; 1" iron pipe - S1°04'34"E, 87.91'; DOT iron rod - S18°15'47"W, 98.30'; PK nail in 8" Tamarack - N10°05'E, 116.47'.

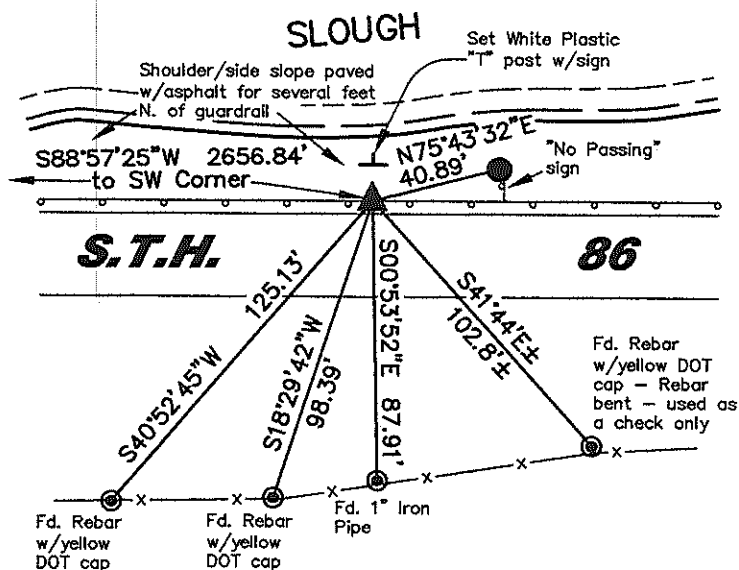
March-July, 2009 - Matthew E. Hoglund found ties per Stuart Foltz from 1991 and capped rebar per WisDOT at S36°W, 125.13'. As road was adjacent to wetland backwater, during reconstruction of S.T.H. "86" the North shoulder was rip-rapped and paved with asphalt several feet North of the guard rail to protect and stabilize roadbed. Corner position falls under guard rail cables, set Bermtsen SNM1 nail stamped "SURVEY MARK" and measured to witnesses as shown below.

(c)(d)(e) Plan view of corner with ties to at least 4 witness monuments. If in disagreement with previously established corner, show the distances between the two corners and also indicate the ties to the disputed corner.

Basis of Bearings: Lincoln County Coordinate System.
 Scale 1" = 60'
 Project # 863

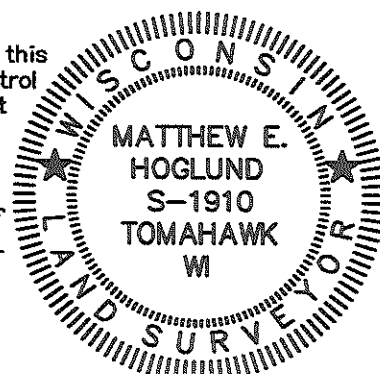
Legend

- Set Bermtsen SNM1 Nail stamped "Survey Mark"
- Set 7/8" by 30" Iron Rod with Aluminum Cap
- Fd. Witness Monument as noted



(i) I, Matthew E. Hoglund, certify that the corner location on this record was determined by me under my direction and control and that this U.S. Public Land Survey Monument is correct and complete to the best of my knowledge and belief.

Signature _____ Date 10/21/2009



INDEX NO. E-11

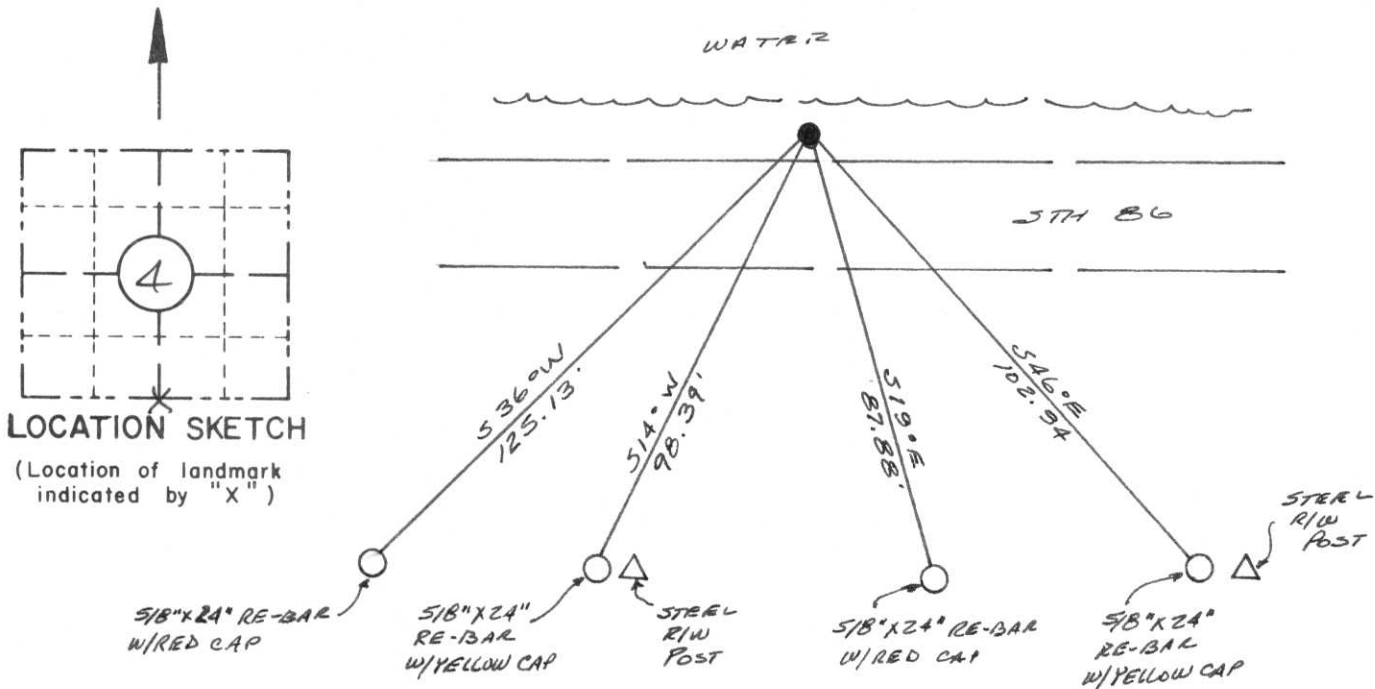
RECORD AND CERTIFICATION OF U.S. PUBLIC LAND SURVEY CONTROL STATION

State of Wisconsin / Department of Transportation

E-D-716-72

District 7	Project I. D. 9215-06-00	Located by R. B. JOHNSON - SURVEY CREW CHIEF			
Corner 5/4 COR. 4 SECTION	Township 34 N	Range (E,W) 6E	County LINCOLN		
Wisconsin Coordinates CORNER	East (X) 2,065,710.18	North (Y) 590,839.47	Elevation (Z)	Zone C	
Control Station Name	East (X)	North (Y)	Elevation (Z)	Zone	
Horizontal — NORTH AMERICAN, 1927		CONTROL DATUM Vertical — MEAN SEA LEVEL, 1929 ADJUSTMENT			
Horizontal — 2ND Order		SURVEY CONTROL		Vertical — _____ Order	

SKETCH



LOCATION SKETCH
(Location of landmark indicated by "X")

I hereby certify that on the 14TH day of MAY 1991, that I did locate the above corner which was evidenced by 4"X4" CONCRETE MONUMENT

; I further certify that to perpetuate the location of such corner I did, at the exact location thereof, place a permanent marker consisting of _____

; I further certify that I did establish 4 references or witness monuments consisting of 5/8"X 24" RE-BARS WITH D.O.T. PLASTIC CAPS

located as shown above:

SEAL

Signature Registered Land Surveyor	Registration No. S--	Title
------------------------------------	-------------------------	-------

CORNER
5/4 COR.
SECTION
4
TOWN
34 N
RANGE
6E

FIELD SURVEY NOTES

E-D-702 6-70

RECEIVED JUN 18 1991

State of Wisconsin / Department of Transportation

E-11

REFERENCE

N 1/4 CORNER SEC 9 T34N R6E
COR. E-11

5-14-37
RBT, DH, GC



60 07 36
26 53 32
33 14 04

82 30 26
60 07 36
22 22 50

CORNER 13
4" x 4" CONC.
POST EMBED
1 1/2 FT

26° 53' 32"

87.82

33° 14' 04"

98.390

22° 22' 50"

125.125

①
RE-BAR
W/YELLOW CAP
& R/W POST

②
RE-BAR
W/RED CAP
& X LATHE

③
RE-BAR
W/YELLOW CAP
& R/W POST

④
RE-BAR
W/RED CAP
& X LATHE

	HORIZ. ANGLE	DIST.
CORNER-1	0	102.935
CORNER-2	26° 53' 32"	87.82
CORNER-3	60° 07' 36"	98.39
CORNER-4	82° 30' 26"	125.125

FIELD SURVEY NOTES

E-D-702 6-70

REFERENCE
 N 1/4 CORNER SEC 9 T34N R1E
 E-11

5-14-37
 RBF, DH, GC



60 07 36
 26 53 32
 33 14 04

82 30 26
 60 07 36
 22 22 50

CORNER IS
 4" x 4" CONC.
 POST SURVEYED
 1 1/2 FT

102.935
 546°E

26° 53' 32"
 87.82
 519°E

33° 14' 04"
 98.390
 22° 22' 50" S14°W

125.125
 536°W

①
 RE-BAR
 W/YELLOW CAP
 & R/W POST

②
 RE-BAR
 W/RED CAP
 & X LATH

③
 RE-BAR
 W/YELLOW CAP
 & R/W POST

④
 RE-BAR
 W/RED CAP
 & X LATH

	HORIZ α	DIST.
CORNER-1	0	102.935
CORNER-2	26° 53' 32"	87.82
CORNER-3	60° 07' 36"	98.39
CORNER-4	82° 30' 26"	125.125

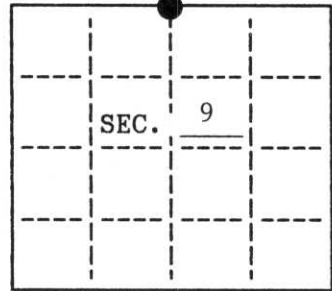
- TOPOGRAPHY
- SURVEY ALIGNMENT

E-11

U.S. PUBLIC LAND SURVEY MONUMENT RECORD

Note: This form is intended and designed to fulfill all requirements of Wisconsin Administrative Code, Chapter A-E 7.08 U.S. Public Land Survey Monument Record (3)(a)(b)(c)(d)(e)(f)(g)(h)(i). An additional sheet may be added if necessary to conform with said requirements.

(a) CORNER LOCATION: State Plane Coordinates
N $\frac{1}{4}$ corner of Sec. 9 X _____
 Township 34 North Y _____
 Range 6 East Datum Base _____
 Town/City Bradley County of Lincoln



(b) HISTORY OF ORIGINAL CORNER ESTABLISHMENT

Original Surveyor: Jackson Prentice
 Date of Survey: Commenced 1854
 Completed 1854

Original B.T.'S

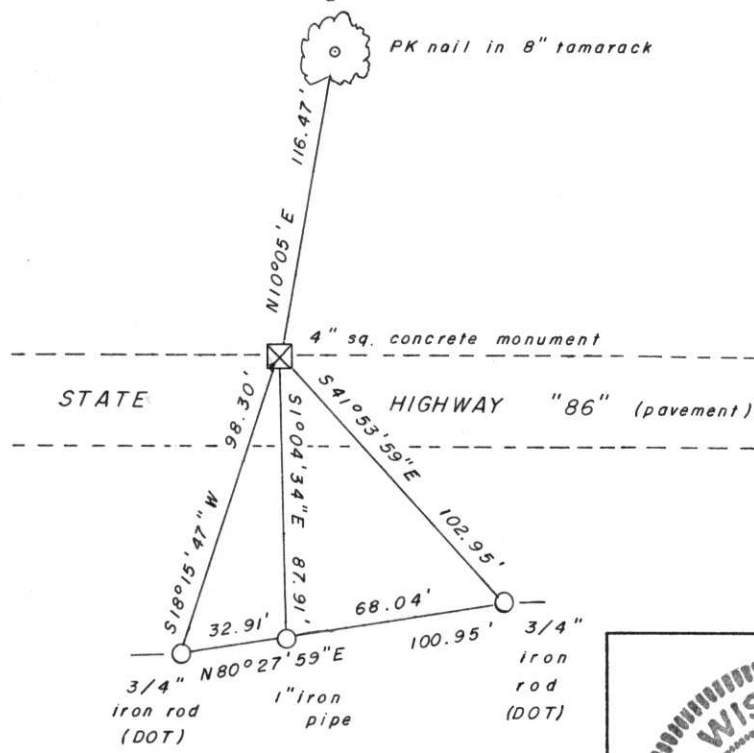
Tamarack 10" S86°E, 260 lks.
 Pine 10" N80°W, 28 lks.

(b)(f)(g)(h) Description of monument found at this corner and if it was accepted, state all evidence (material, testimonial, occupational, plats, records, other monuments) used as a basis for accepting. If not accepted or if nothing was found, state evidence used as basis for establishing location. If reestablished through lost corner proportionate methods, indicate all monuments, distances and directions used to establish. Indicate type of monument and sign post found or set.

- 1948 - In "Lake Mohawksin Add. City of Tomahawk" Plat, L. M. Peters accepts concrete monument.
- 1973 - William Stuth accepts concrete monument, 12" under surface, 16.5' north of road centerline, No. B.T.'s.
- 1988 - Wisconsin DOT found 4"x 4" concrete monument.
- 1990 - I found and accepted a 4" square concrete monument pointed out to me by Bill Stuth to be the monument described above.

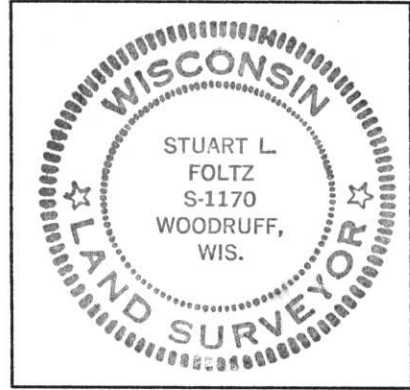
(c)(d)(e) Plan view of corner with ties to at least 4 witness monuments. If in disagreement with previously established corner, show the distances between the two corners and also indicate the ties to the disputed.

RECEIVED AT LINCOLN COUNTY
 COUNTY HOUSE THIS 20th DAY
 OF Feb. 19 91
Pat Prentice
 TAX DESCRIPTION OFFICE



(i) I, Stuart L. Foltz
 hereby certify that the corner location on this record was determined by me or under my direction and control and that this U.S. Public Land Survey Monument Record is correct and complete to the best of my knowledge and belief.

Stuart L. Foltz Signature
2/14/1991 Date



INDEX NO. E-11