

U.S. PUBLIC LAND SURVEY MONUMENT RECORD

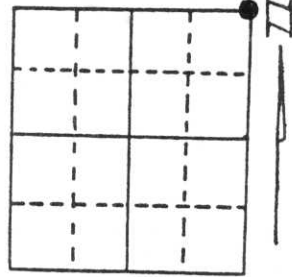
Note: This form is intended and designed to fulfill all requirements of Wisconsin Administrative Code, Chapter A-E 5.02, U.S. Public Land Survey Monument Record (3) (a) (b) (c) (d) (e) (f) (g) (h) (i). An additional sheet may be added if necessary to conform with said requirements.

(a) Corner location: Township 34 North

Range 6 East

Town/City/Village Town of Bradley

County Lincoln

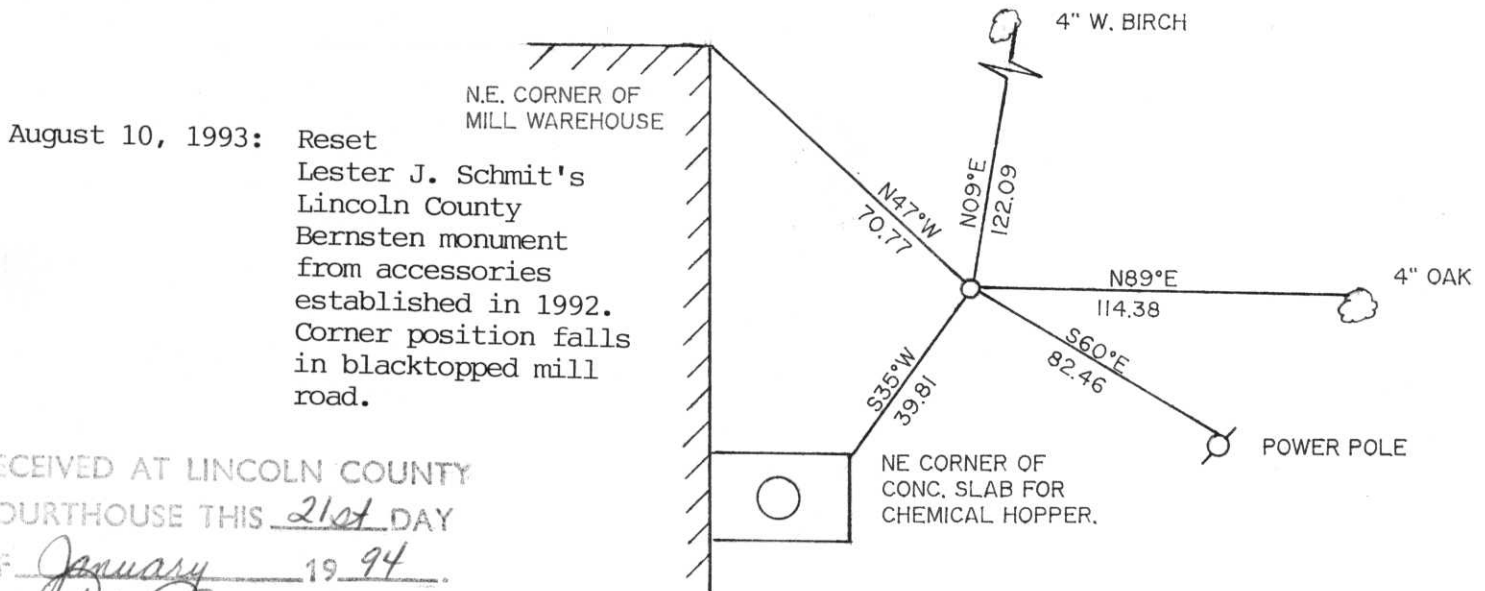


Section 10

(b) (f) (g) (h) Description of monument found at this corner and if it was accepted, state all evidence (material, testimonial, occupational, plats, records, other monuments) used as a basis for accepting. If not accepted or if nothing was found, state evidence used as basis for establishing location. If reestablished through lost corner proportionate methods, indicate all monuments, distances and directions used to establish.

- December 28, 1854: Original G.L.O. survey by Jackson L. Prentice.
- March 28, 1977: Corner position established and recorded by Lester J. Schmit. He set Lincoln County Bernsten aluminum monument.
- 1992: Construction operations at Louisiana Pacific Waferboard Plant were going to obliterate monument and accessories. Additional accessories outside construction limits were established and monument was removed. To be reset after construction was completed.

(c) (d) (e) Plan view of corner with ties to at least 4 witness monuments. If in disagreement with previously established corner, show the distances between the two corners and also indicate the ties to the disputed corner.



August 10, 1993: Reset Lester J. Schmit's Lincoln County Bernsten monument from accessories established in 1992. Corner position falls in blacktopped mill road.

RECEIVED AT LINCOLN COUNTY
COURTHOUSE THIS 21st DAY
OF January 19 94
Pat Orube
TAX DESCRIPTION OFFICE

(i) I, John R. Garske
(type or print name) certify that the corner location on this record was determined by me or under my direction and control and that this U.S. Public Land Survey Monument Record is correct and complete to the best of my knowledge and belief.

John R. Garske 1/20/94
Signature Date



Index No. E-17

CERTIFIED LAND CORNER RESTORATION

Index No. E-17

State of Wisconsin }
County of Lincoln } ss.

History of original corner establishment:

Surveyor: Jackson L. Prentice
Date: 28 December 1854
Monumentation: Wood Post
Witnesses: White Pine 10; S 12° E; 15 links
White Pine 10; S 58° W; 16 links
White Pine 9; N 25° W; 27 links
White Pine 11; N 66° E; 55 links

I Lester J. Schmit, do hereby certify that on the 28th day of March, 1977, I ~~found evidence of the~~ established the Northeast corner of Section 10 Township 34, North, Range 6 East, Fourth, Principal Meridian, as described hereon; and that ~~from this evidence~~ I established a new monument and accessories as described hereon to perpetuate the ~~original~~ location of this corner.

Description of corner evidence found: none

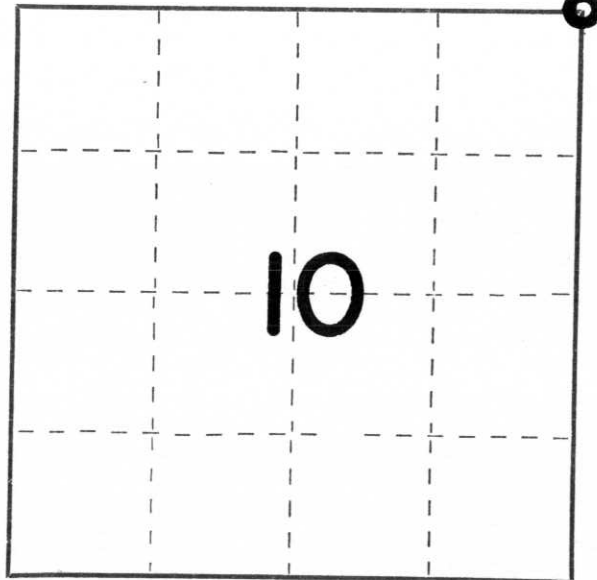
Resident witnesses:

.....
.....
.....

Description of monument and accessories I established to perpetuate the ~~original~~ location of this corner.

Berntsen Monument - 30" (Set flush with surface.)
Placed wood post (squared) 1' north of
Berntsen Monument. Berntsen Monument
is Northeast corner of Section 10.

Witnesses: P.K. Nail in 10" White Birch; N 46°12'26" E; 36.81'
P.K. Nail in Power Pole # 1060; S 8°29'02" W; 155.15'
P.K. Nail in 19" White Pine; N 81°30'46" W; 119.43'
P.K. Nail in Power Pole # 1068; N 6°06'03" W; 202.12'



○ = Corner monument restored.

Dated at Tomahawk, Wis., this 31st day of March, 1977

Signature Lester J. Schmit Title Land Surveyor Registration No. S-1192
(County Surveyor, Registered Land Surveyor, or other duly authorized official)

Office of Register of Deeds, County of....., I hereby certify that the within instrument was filed in this office for record on the..... day of....., 19..... at..... o'clock..... M..

.....
(Register of Deeds)

By..... Deputy