

U.S. PUBLIC LAND SURVEY MONUMENT RECORD

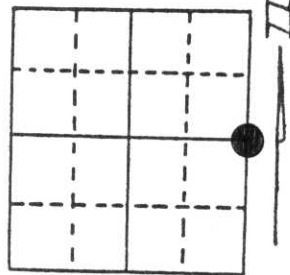
Note: This form is intended and designed to fulfill all requirements of Wisconsin Administrative Code, Chapter A-E 5.02, U.S. Public Land Survey Monument Record (3) (a) (b) (c) (d) (e) (f) (g) (h) (i). An additional sheet may be added if necessary to conform with said requirements.

(a) Corner location: Township 34 North

Range 6 East

~~_____~~/City/Village Tomahawk

County Lincoln

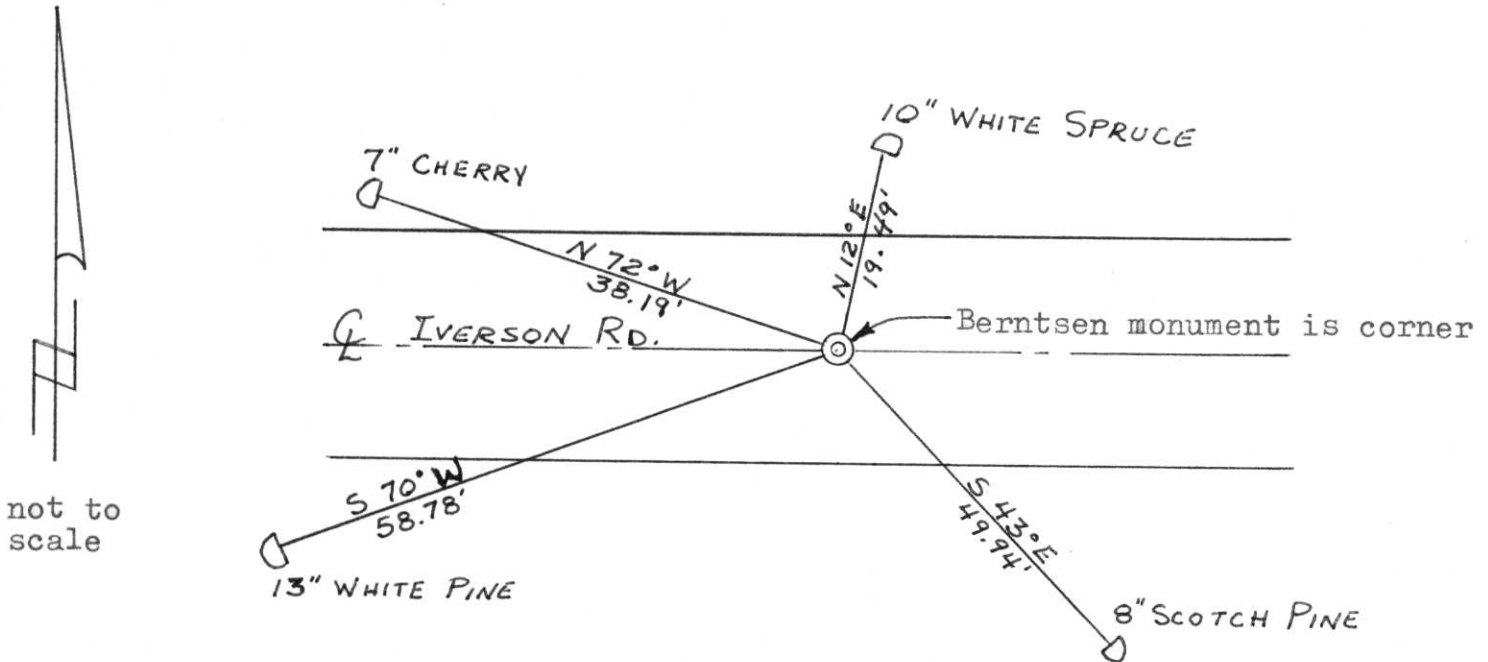


Section 2

(b) (f) (g) (h) Description of monument found at this corner and if it was accepted, state all evidence (material, testimonial, occupational, plats, records, other monuments) used as a basis for accepting. If not accepted or if nothing was found, state evidence used as basis for establishing location. If reestablished through lost corner proportionate methods, indicate all monuments, distances and directions used to establish. Original Gov't. Survey: Dec 1854 by Jackson Prentice, set wood post for corner with bearings, aspen 8 N 17° W 40 links & aspen 8 S 59° E 50 links. I found a 1½" iron pipe, 2" below surface of Iverson Road for the corner. Verified the corner using the stump of 34" white pine N15° W 18.0' & the stump of 20" white pine N 50° E 37.4' per notes of Scherer on 5 Oct 71. Replaced the 1½" iron pipe with a Berntsen monument and witnessed as shown below.

RECEIVED OCT 9 1991

(c) (d) (e) Plan view of corner with ties to at least 4 witness monuments. If in disagreement with previously established corner, show the distances between the two corners and also indicate the ties to the disputed corner.



not to scale

(i) I, Lester J. Schmit R.L.S. S-1192

(type or print name) certify that the corner location on this record was determined by me or under my direction and control and that this U.S. Public Land Survey Monument Record is correct and complete to the best of my knowledge and belief.

Lester J. Schmit Signature 24 Sep 91 Date



Index No. L-21

64.

Project I.D. 1173-3-00 C.T.H. "S"
U.S.H.8 U.S.H. 51 Freeway Lincoln
Co. Wm. Scherer Surveyor Received
from Division of Hwy's Jan. 11, 1973

T34N, R6E

L-21

Oct. 5, 1971

