

U.S. PUBLIC LAND SURVEY MONUMENT RECORD

NOTE: This form is intended and designed to fulfill all requirements of Wisconsin Administrative Code, Chapter A-E 7.08 U.S. Public Land Survey Monument Record. An additional sheet may be added if necessary to conform with said requirements.

CORNER LOCATION

Section Corner common to Sections 1, 2, 11 and 12
 Township 34 North, Range 6 East of the 4th P.M.
 Town of Bradley, Lincoln County, Wisconsin

6	5	4	3	2	1
7	8	9	10	11	12
18	17	16	15	14	13
19	20	21	22	23	24
30	29	28	27	26	25
31	32	33	34	35	36

T34N - R6E

HISTORY OF ORIGINAL CORNER ESTABLISHMENT

ORIGINAL SURVEYOR: Prentice, Jackson L.
 DATE OF SURVEY: Commenced December 1854 Finished January 1855
 ORIGINAL ACCESSORIES: "Set corner post to sections 1, 2, 11 & 12"
 Pine 14 N54°E 40 links
 Pine 8 N28°W 38 links
 Pine 8 S77°W 50 links
 Pine 10 S52°E 35 links

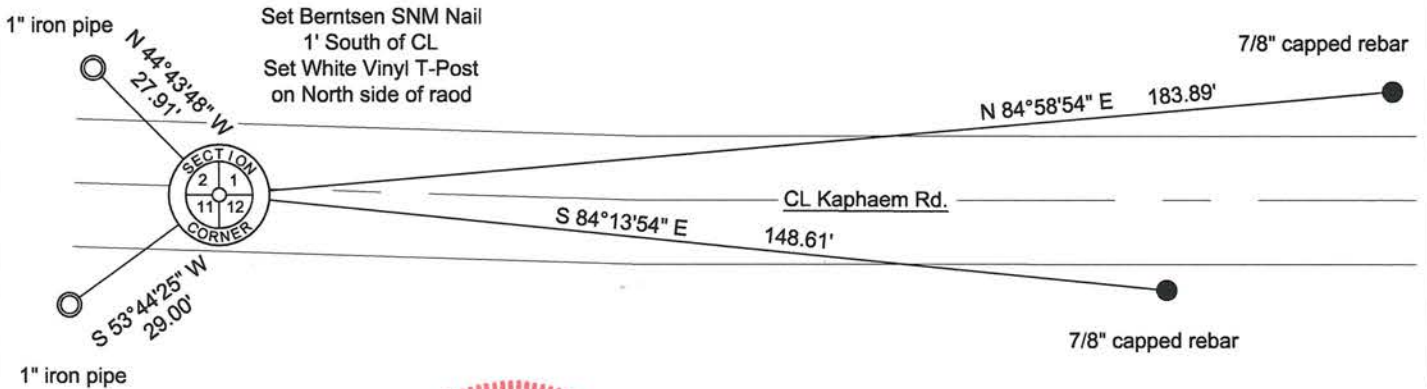
DESCRIPTION OF MONUMENT FOUND AT THIS CORNER AND IF IT WAS ACCEPTED, STATE ALL EVIDENCE (MATERIAL, TESTIMONIAL, OCCUPATIONAL, PLATS, RECORDS, OTHER MONUMENTS) USED AS A BASIS FOR ACCEPTING. IF NOT ACCEPTED OR IF NOTHING WAS FOUND, STATE EVIDENCE USED AS BASIS FOR ESTABLISHING LOCATION. IF RE-ESTABLISHED THROUGH LOST CORNER PROPORTIONATE METHODS, INDICATE ALL MONUMENTS, DISTANCES AND DIRECTIONS USED TO ESTABLISH. INDICATE TYPE OF MONUMENT AND SIGN POST FOUND OR SET.

Jan. 1973 - Tie sheet labeled "Project I.D. 1173-3-00 C.T.H. "S" - U.S.H. 8 U.S.H. 51 Freeway Lincoln Co. Wm. Scherer Surveyor received from Division of Hwy." shows a 1" iron pipe 4" below road surface, found by Munninghoff and Scherer Oct. 1971.

Sep. 191 - Lester J. Schmit found a 1.5" iron pipe, 4" below surface of Kaphaem Road for corner. Replaced iron pipe with Berntsen monument and witnessed with two iron pipes and two existing gas line pipes.

Aug. 2015 - Chad A. Besaw found two of Schmit's ties and set a Berntsen Steel Nail in new asphalt of Kaphaem Road. Berntsen monument previously set by Lester J. Schmit appears to have been destroyed with road resurfacing. Gas line pipes remain but with plastic covers preventing an accurate measurement. New ties were requested to be set outside of gas easement. Witnessed as shown below:

PLAN VIEW OF CORNER WITH TIES TO AT LEAST 4 WITNESS MONUMENTS. IF IN DISAGREEMENT WITH PREVIOUSLY ESTABLISHED CORNER, SHOW THE DISTANCES BETWEEN THE TWO CORNERS AND ALSO INDICATE THE TIES TO THE DISPUTED.



Bearings Lincoln County Grid

RECEIVED BY LINCOLN COUNTY SURVEYOR THIS 12TH DAY OF September 20, 15
Tom Duh
 COUNTY SURVEYOR



SCALE: 1" = 30'

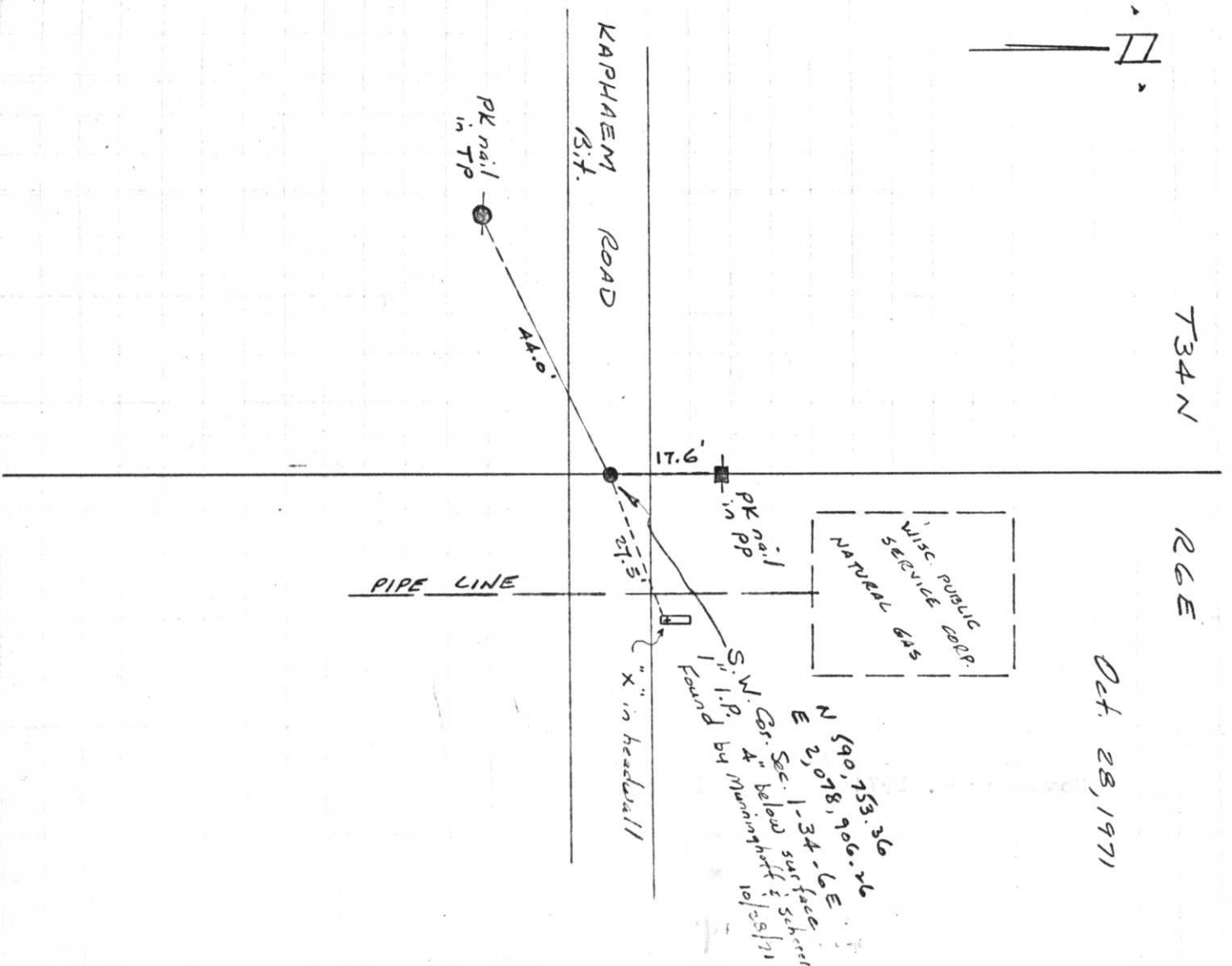
I, Chad A. Besaw, Registered Land Surveyor No. S-3029, hereby certify that the corner location on this record was determined by me or under my direction and control and that this U.S. Public Land Survey Monument Record is correct and complete to the best of my knowledge and belief.

Chad A. Besaw 8/20/15
 Chad A. Besaw, RLS No. S-3029
 STEIGERWALDT LAND SURVEYING, LLC

INDEX NO.

E-21

Project I.D. 1173-3-00 C.T.H. "ST"
U.S.H.8 U.S.H. 51 Freeway Lincoln
Co. Wm. Scherer Surveyor Received
from Division of Hwy's Jan. 11, 1973



T34N

R6E

Oct. 28, 1971

E-21

U.S. PUBLIC LAND SURVEY MONUMENT RECORD

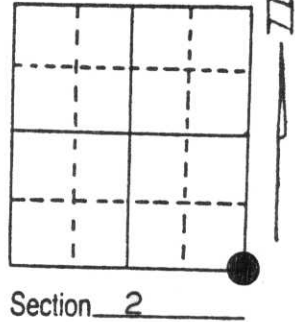
Note: This form is intended and designed to fulfill all requirements of Wisconsin Administrative Code, Chapter A-E 5.02, U.S. Public Land Survey Monument Record (3) (a) (b) (c) (d) (e) (f) (g) (h) (i). An additional sheet may be added if necessary to conform with said requirements.

(a) Corner location: Township 34 North

Range 6 East

~~Township~~/City/Village Tomahawk

County Lincoln

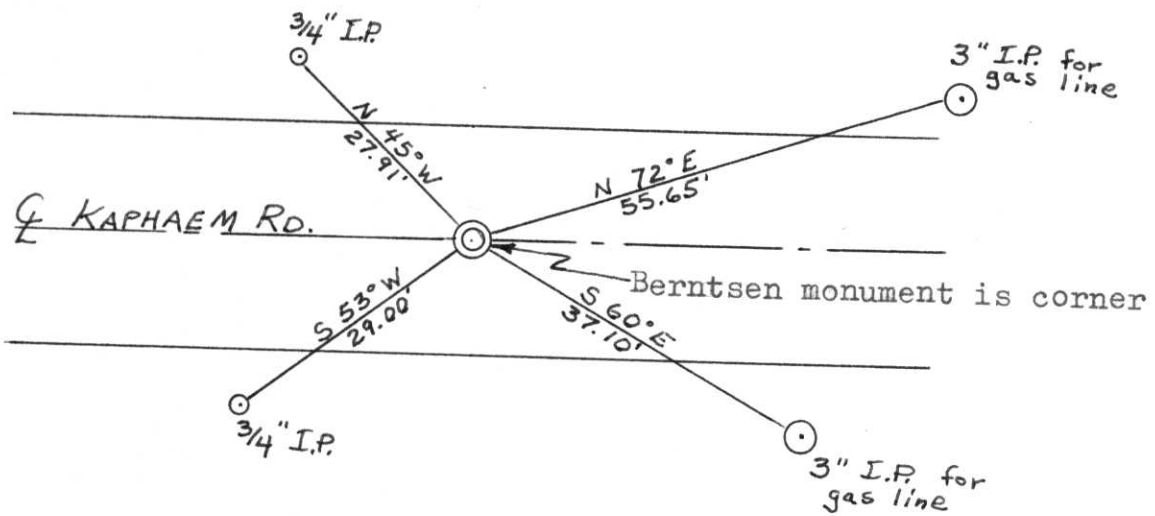


(b) (f) (g) (h) Description of monument found at this corner and if it was accepted, state all evidence (material, testimonial, occupational, plats, records, other monuments) used as a basis for accepting. If not accepted or if nothing was found, state evidence used as basis for establishing location. If reestablished through lost corner proportionate methods, indicate all monuments, distances and directions used to establish. Original Gov't. Survey: Dec 1854 by Jackson Prentice, set wood post for corner with bearings, pine 14 N 54° E 40 links, pine 8 N 28° W 38 links, pine 8 S 77° W 50 links & pine 10 S 52° E 35 links. I found a 1½" iron pipe, 4" below surface of Kaphaem Road for corner. Replace 1½" iron pipe with Berntsen monument and witnessed as shown below.

RECEIVED OCT 9 1991

(c) (d) (e) Plan view of corner with ties to at least 4 witness monuments. If in disagreement with previously established corner, show the distances between the two corners and also indicate the ties to the disputed corner.

not to scale



(i) I, Lester J. Schmit R.L.S. S-1192
 (type or print name) certify that the corner location on this record was determined by me or under my direction and control and that this U.S. Public Land Survey Monument Record is correct and complete to the best of my knowledge and belief.

Lester J. Schmit 24 Sep 91
 Signature Date



Index No. E-21