

U.S. PUBLIC LAND SURVEY MONUMENT RECORD

NOTE: THIS FORM IS INTENDED AND DESIGNED TO FULFILL ALL REQUIREMENTS OF WISCONSIN ADMINISTRATIVE CODE, CHAPTER A-E 7.08, U.S. PUBLIC LAND SURVEY MONUMENT RECORD (3)(a)(b)(c)(d)(e)(f)(g)(h)(i). ADDITIONAL SHEETS MAY BE NECESSARY TO CONFORM TO SAID REQUIREMENTS.

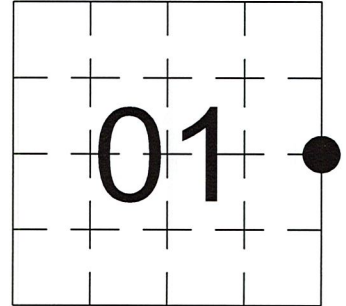
T 34 N, R 6 E

(a) CORNER LOCATION:

EAST 1/4 CORNER, SECTION 01
 TOWNSHIP 34 NORTH
 RANGE 6 EAST
 TOWN OF BRADLEY
 LINCOLN COUNTY
 WISCONSIN

(b) HISTORY OF ORIGINAL CORNER:

ORIGINAL SURVEYOR: See Previous Tie Sheet
 COMMENCING DATE:
 COMPLETION DATE:
 ORIGINAL BEARING TREES:



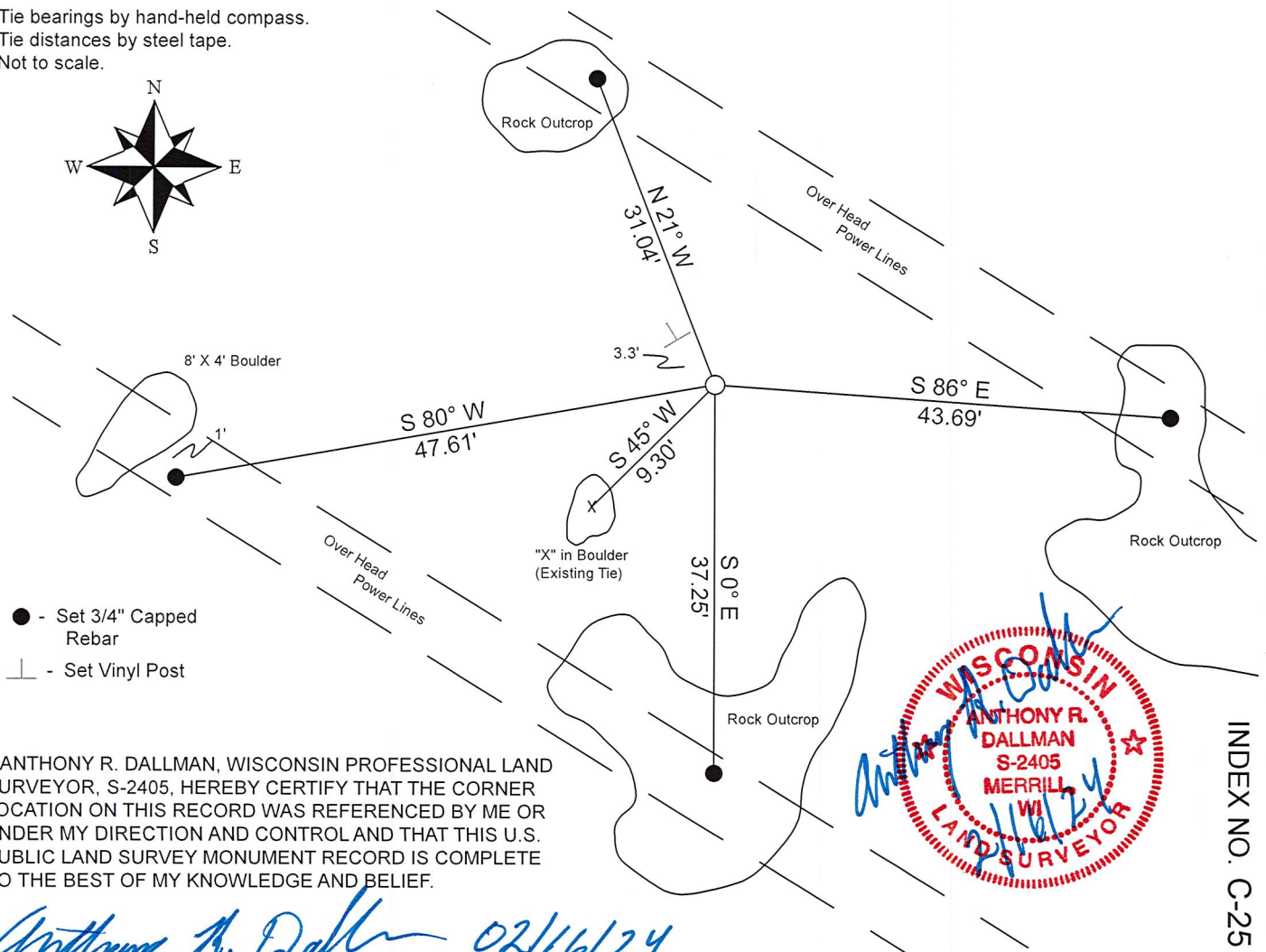
(f)(g)(h) DESCRIPTION OF MONUMENT FOUND AT THIS CORNER AND IF IT WAS ACCEPTED. STATE ALL EVIDENCE (MATERIAL, TESTIMONIAL, OCCUPATIONAL, PLATS, RECORDS, OTHER MONUMENTS) USED AS A BASIS FOR ESTABLISHING LOCATION. IF RE-ESTABLISHING THROUGH LOST CORNER PROPORTIONATE METHODS, INDICATE ALL MONUMENTS, DISTANCES, AND DIRECTIONS USED TO ESTABLISH. INDICATE TYPE OF MONUMENTS FOUND OR SET.

10/22/1971, Wm. Scherer, found a 1 1/2" Iron Pipe.

10/11/2023, I, Anthony R. Dallman, PLS-2405, found a 1 1/2" O.D. Iron Pipe, up 18". I accepted this location and set witness monuments, as shown in the sketch below, to further perpetuate the corner location.

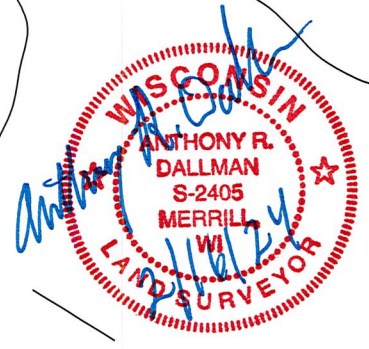
(c)(d)(e) PLAN VIEW OF THE CORNER WITH TIES TO AT LEAST FOUR WITNESSES. IF IN DISAGREEMENT WITH PREVIOUSLY ESTABLISHED CORNER, SHOW THE DISTANCES BETWEEN THE TWO CORNERS AND ALSO THE TIES TO THE DISPUTED CORNER.

- Tie bearings by hand-held compass.
- Tie distances by steel tape.
- Not to scale.



I, ANTHONY R. DALLMAN, WISCONSIN PROFESSIONAL LAND SURVEYOR, S-2405, HEREBY CERTIFY THAT THE CORNER LOCATION ON THIS RECORD WAS REFERENCED BY ME OR UNDER MY DIRECTION AND CONTROL AND THAT THIS U.S. PUBLIC LAND SURVEY MONUMENT RECORD IS COMPLETE TO THE BEST OF MY KNOWLEDGE AND BELIEF.

Anthony R. Dallman 02/16/24
 ANTHONY R. DALLMAN, PLS S-2405



INDEX NO. C-25

43406012000_Mon-N



43406012000_North



43406012000_West



43406012000_South



43406012000_East



43406012000_New Power Line



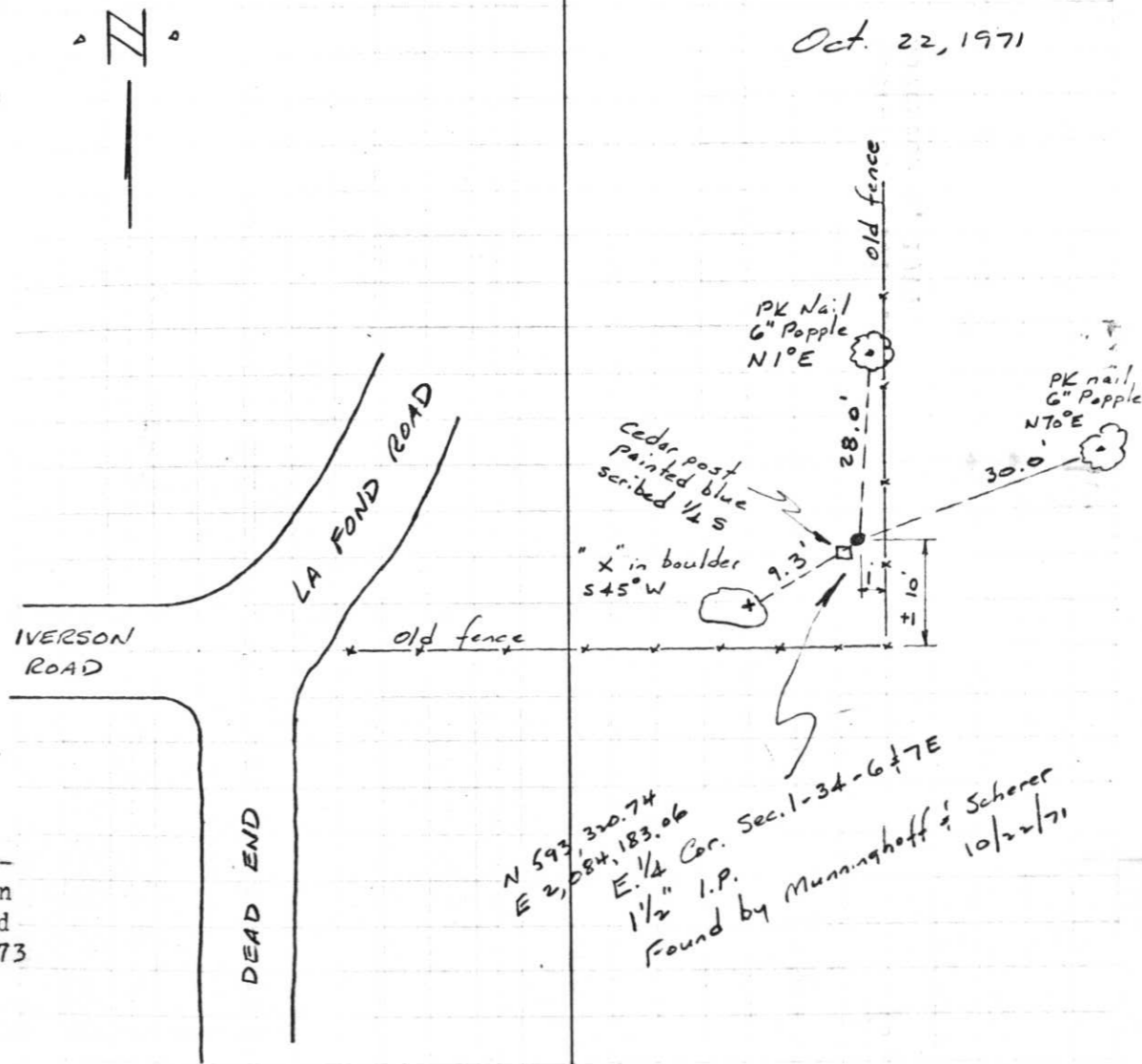
85.

Project I.D. 1175-3-00 C.T.H. "S"
U.S.H.8 U.S.H. 51 Freeway Lincoln
Co. Wm. Scherer Surveyor Received
from Division of Hwy's Jan. 11, 1973

T34N

R 6 1/2 E L-25

Oct. 22, 1971



N 59 1/2 320.74
E 2 1/2 183.06
1/2" I.P.
Found by Munninghoff & Scherer
10/22/71

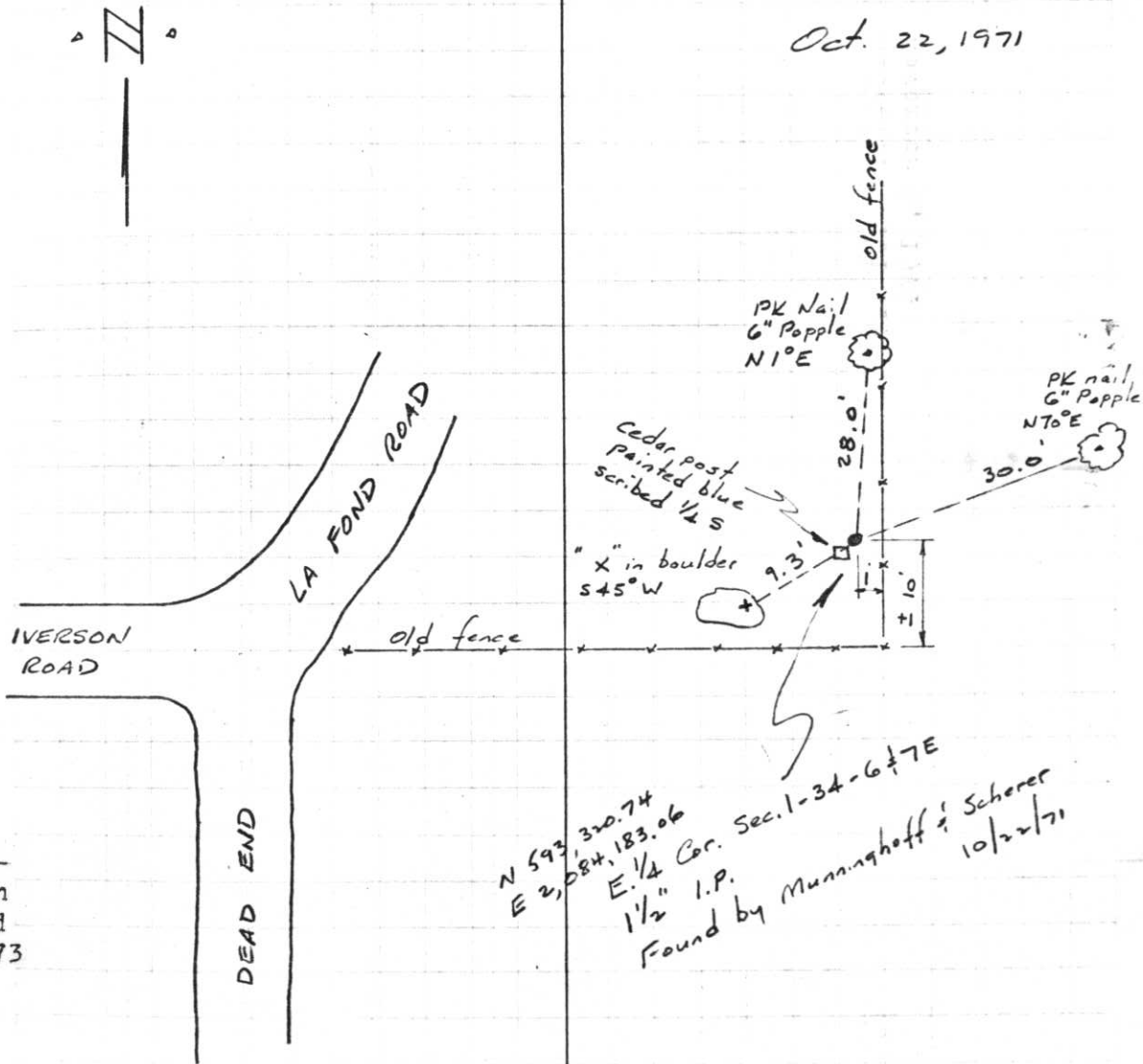
85.

Project I.D. 1175-3-00 C.T.H. "S"
U.S.H. 8 U.S.H. 51 Freeway Lincoln
Co. Wm. Scherer Surveyor Received
from Division of Hwy's Jan. 11, 1973

T34N

R 6 1/2 E L-25

Oct. 22, 1971



N 59° 32.74
E 2, 084, 183.06
E. 1/2 Cor. Sec. 1-34-6 1/2 E
1 1/2" I.P.
Found by Munnigheoff & Scherer
10/22/71

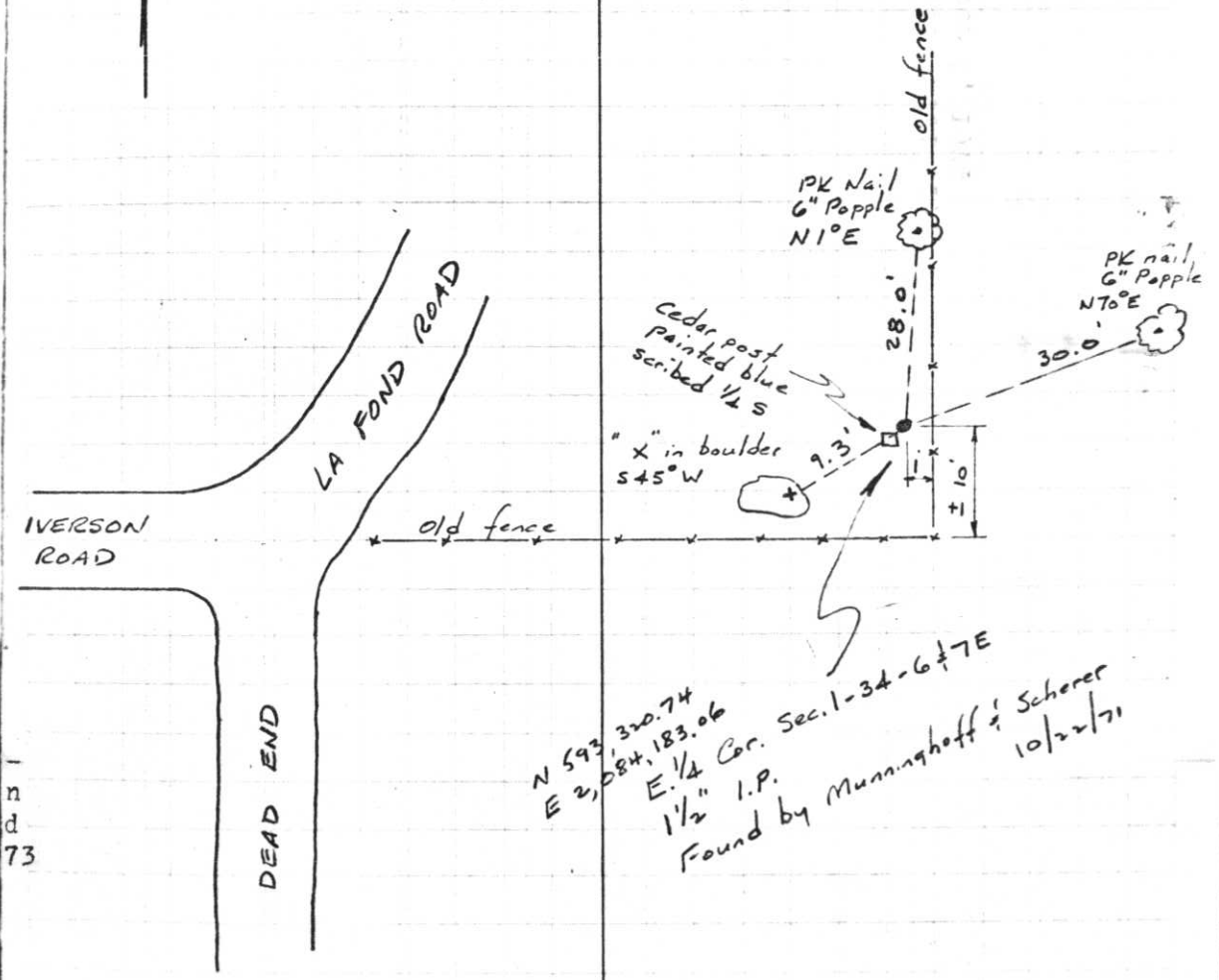
85.

Project I.D. 1173-3-00 C.T.H. "S"
U.S.H.8 U.S.H. 51 Freeway Lincoln
Co. Wm. Scherer Surveyor Received
from Division of Hwy's Jan. 11, 1973

T34N

R6 1/2 7E L-25

Oct. 22, 1971



N 593 320.74
E 2,584 183.06
E. 1/4 Cor. Sec. 1-34-6 1/2 7E
1 1/2" I.P.
Found by Munninghoff & Scherer
10/22/71