

# U.S. PUBLIC LAND SURVEY MONUMENT RECORD ADDENDUM

Note: This form is intended and designed to fulfill all requirements of the Wisconsin Administrative Code, Chapter A-E 7.08 U.S. Public Land Monument Record (3)(a)(b)(c)(d)(e)(f)(g)(h)(i). An additional sheet may be added if necessary to conform with said requirements.

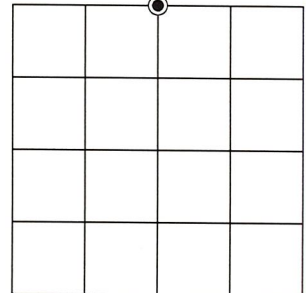
(a) CORNER LOCATION:

North Corner of Section 12  
 Township 34 North  
 Range 6 East  
 Town of Bradley  
 County of Lincoln

North:  
 East:  
 Datum:  
 GNSS Method:  
 GNSS Control:

(RECORDING AREA)

SECTION 12



(b) HISTORY OF ORIGINAL CORNER ESTABLISHMENT

Original Surveyor:  
 Date of Survey: Commenced  
 Completed  
 Original B.T.'S

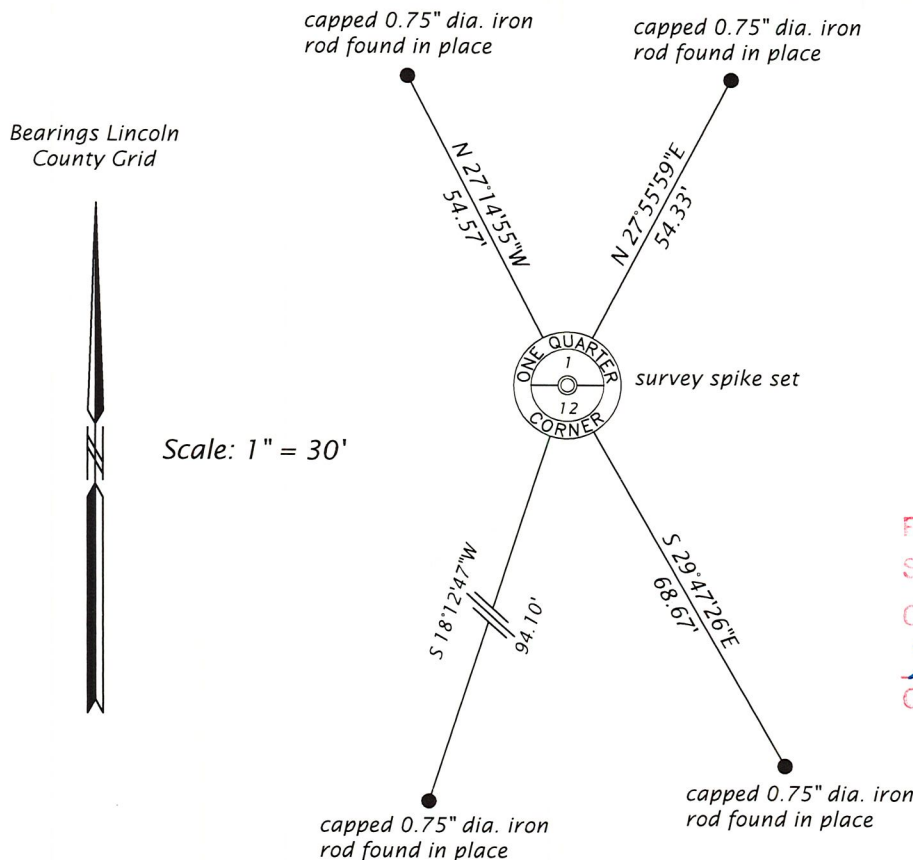
**SEE PREVIOUS U.S.P.L.S. MONUMENT RECORD DATED AUGUST 26, 2015**

(f)(g)(h) DESCRIPTION OF MONUMENT FOUND AT THIS CORNER AND IF IT WAS ACCEPTED, STATE ALL EVIDENCE (MATERIAL, TESTIMONIAL, OCCUPATIONAL, PLATS, RECORD, OTHER MONUMENTS) USED AS A BASIS FOR ESTABLISHING LOCATION. IF NOT ACCEPTED OR IF NOTHING WAS FOUND, STATE EVIDENCE USED AS BASIS FOR ESTABLISHING LOCATION. IF REESTABLISHED THROUGH LOST CORNER PROPORTIONATE METHODS, INDICATE ALL MONUMENTS, DISTANCES AND DIRECTIONS USED TO ESTABLISH. INDICATE TYPE OF MONUMENT AND SIGN POST FOUND OR SET.

This is a perpetuation of a previous U.S.P.L.S. Monument Record by Chad A. Besaw, RLS, dated August 26, 2015, and filed in the office of the Lincoln County Register of Deeds. A complete history of the corner can be found on the previous monument record. I accept the previous location as a true and faithful perpetuation or reestablishment of the original corner location and further perpetuate it as follows.

August 29, 2023 - James D. Rein, P.L.S. No. S-1234, we set a survey spike at the corner position based on the references ties shown on the previous monument record by Besaw. See below for updated references.

(c)(d)(e) PLAN VIEW OF CORNER WITH TIES TO AT LEAST 4 WITNESS MONUMENTS. IF IN DISAGREEMENT WITH PREVIOUSLY ESTABLISHED CORNER, SHOW THE DISTANCE BETWEEN THE TWO CORNERS AND ALSO INDICATE THE TIES TO THE DISPUTED CORNER.



RECEIVED BY LINCOLN COUNTY SURVEYOR THIS 28<sup>TH</sup> DAY OF September 20 23  
*Tom Drake*  
 COUNTY SURVEYOR

(i) I, JAMES D. REIN, PROFESSIONAL LAND SURVEYOR NO. S-1234 HEREBY CERTIFY THAT THE CORNER LOCATION ON THIS RECORD WAS DETERMINED BY ME OR UNDER MY DIRECTION AND CONTROL AND THAT THIS U.S. PUBLIC LAND SURVEY MONUMENT RECORD IS CORRECT AND COMPLETE TO THE BEST OF MY KNOWLEDGE AND BELIEF.

*James D. Rein*  
 SIGNATURE

9/14/23  
 DATE



INDEX NO. E - 23

# U.S. PUBLIC LAND SURVEY MONUMENT RECORD

NOTE: This form is intended and designed to fulfill all requirements of Wisconsin Administrative Code, Chapter A-E 7.08 U.S. Public Land Survey Monument Record. An additional sheet may be added if necessary to conform with said requirements.

**CORNER LOCATION**

Quarter Corner common to Sections 1 and 12  
 Township 34 North, Range 6 East of the 4th P.M.  
 Town of Bradley, Lincoln County, Wisconsin

6	5	4	3	2	1
7	8	9	10	11	12
18	17	16	15	14	13
19	20	21	22	23	24
30	29	28	27	26	25
31	32	33	34	35	36

**T34N - R6E**

**HISTORY OF ORIGINAL CORNER ESTABLISHMENT**

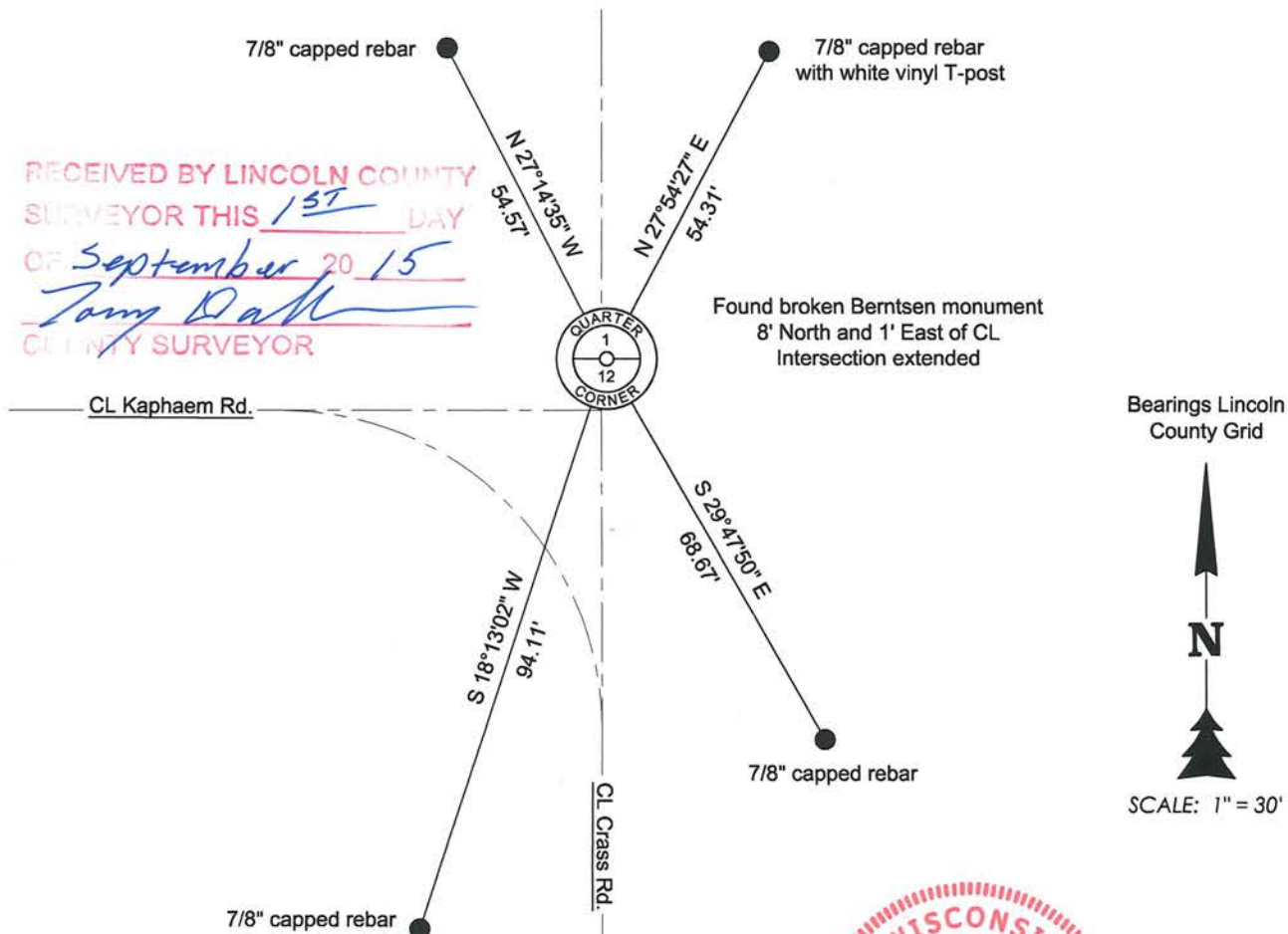
ORIGINAL SURVEYOR: Prentice, Jackson L.  
 DATE OF SURVEY: Commenced December 1854 Finished January 1855  
 ORIGINAL ACCESSORIES: "Set quarter post"  
 Pine 6 N25°W 12 links  
 Pine 8 S51°W 10 links

DESCRIPTION OF MONUMENT FOUND AT THIS CORNER AND IF IT WAS ACCEPTED, STATE ALL EVIDENCE (MATERIAL, TESTIMONIAL, OCCUPATIONAL, PLATS, RECORDS, OTHER MONUMENTS) USED AS A BASIS FOR ACCEPTING. IF NOT ACCEPTED OR IF NOTHING WAS FOUND, STATE EVIDENCE USED AS BASIS FOR ESTABLISHING LOCATION. IF RE-ESTABLISHED THROUGH LOST CORNER PROPORTIONATE METHODS, INDICATE ALL MONUMENTS, DISTANCES AND DIRECTIONS USED TO ESTABLISH. INDICATE TYPE OF MONUMENT AND SIGN POST FOUND OR SET.

Jan. 1973 - Tie sheet for U.S.H. 51 freeway I.D.1173-01-03 shows corner located by Robert Winat in December 1972. Winat stated, "Corner location established by local resident, Mr. August Crass, iron pipe at fence intersection before Crass Road was extended Northerly in 1931. No evidence of iron pipe or original corner was found by excavating with grad-all. Accessory evidence destroyed by road construction or framing. Set Berntsen aluminum monument at Mr. Crass' location, which fits the old fences and made ties."

Aug. 2015 - Chad A. Besaw found broken Berntsen monument with ring of corrosion in Crass Road. All ties were destroyed. Accepted broken Berntsen as corner and did not replace due to newer asphalt. Witnessed as shown below:

PLAN VIEW OF CORNER WITH TIES TO AT LEAST 4 WITNESS MONUMENTS. IF IN DISAGREEMENT WITH PREVIOUSLY ESTABLISHED CORNER, SHOW THE DISTANCES BETWEEN THE TWO CORNERS AND ALSO INDICATE THE TIES TO THE DISPUTED.



RECEIVED BY LINCOLN COUNTY  
 SURVEYOR THIS 15<sup>TH</sup> DAY  
 OF September 20 15  
*Tony Dahl*  
 COUNTY SURVEYOR

I, Chad A. Besaw, Registered Land Surveyor No. S-3029, hereby certify that the corner location on this record was determined by me or under my direction and control and that this U.S. Public Land Survey Monument Record is correct and complete to the best of my knowledge and belief.

*Chad A. Besaw 8/26/2015*  
 Chad A. Besaw, RLS No. S-3029  
 STEIGERWALDT LAND SURVEYING, LLC



INDEX NO.

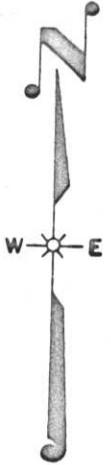
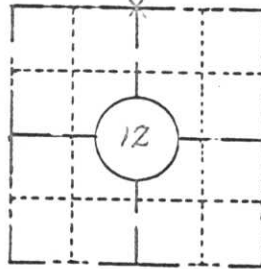
E-23

87.

FIELD SURVEY NOTES  
**PRESERVATION OF LANDMARKS**  
 (Pursuant to Section 59.635(7) Wisconsin Statutes)

Wisconsin Department of Transportation  
 E-D-707-67

COUNTY <i>Lincoln</i>		
TOWN <i>Bradley</i>		
HIGHWAY <i>U.S.H. 51 FREEWAY</i>		
SECTION <i>12</i>	TOWNSHIP <i>T34N</i>	RANGE <i>RGE</i>
TYPE OF LANDMARK <i>North 1/4 corner</i>		



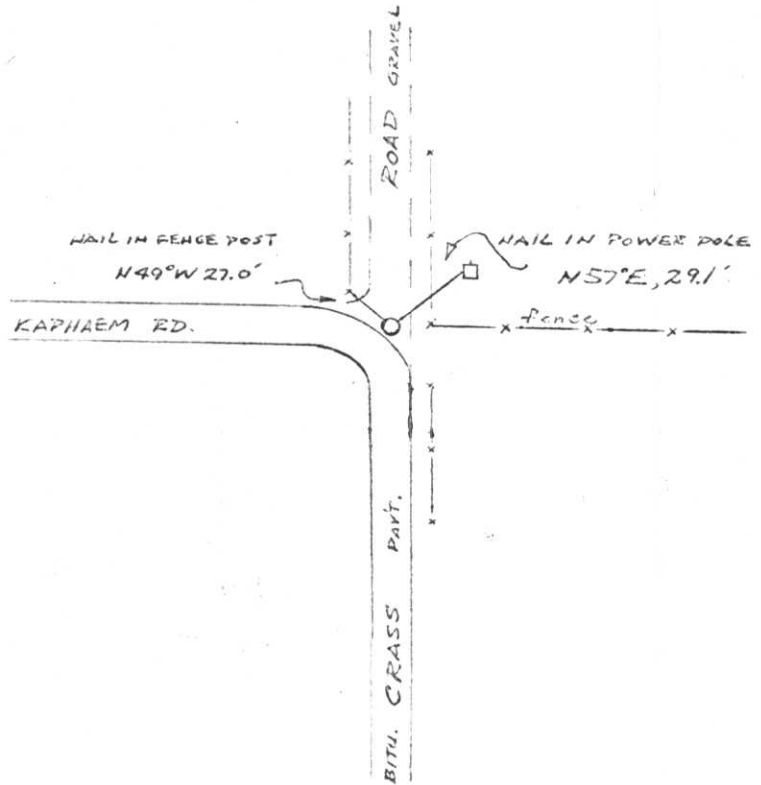
**LOCATION SKETCH**  
 (Location of landmark indicated by "x")

This space for copy of field notes or ties to the above described landmarks

*Mr. August Crass showed me location of iron pipe at fence intersection before Crass Rd. was extended northerly in 1931.*

*No evidence of iron pipe or original corner was found by excavating by GRAD-ALL. Necessary evidence destroyed by road construction or farming.*

*Set Berntsen Aluminum monument at Mr. Crass's location, which fits the old fences, and made ties.*



FILED UNDER PROJECT <i>U.S.H. 51 FREEWAY</i>		COUNTY CLERK'S OFFICE	
NUMBER <i>ID. 1173-0-03</i>	CITY	COUNTY OF <i>Lincoln</i>	WISCONSIN } SS
SHC DISTRICT OFFICE NUMBER <i>7</i>	COUNTY <i>Lincoln</i>	DATE RECEIVED FOR RECORD <i>1/26/73</i>	DATE COPY SENT TO COUNTY SURVEYOR
LOCATED OR ESTABLISHED BY <i>NORTHWOODS SURVEYORS, INC.</i>		SIGNATURE OF COUNTY CLERK <i>Ken Olden</i>	
NAME <i>Robert H. Kinast</i>	TITLE <i>Land Surveyor S-1040</i>	DATE <i>Dec. 1972</i>	

**PRESERVATION OF LANDMARKS**

PAGE \_\_\_\_\_

E-23

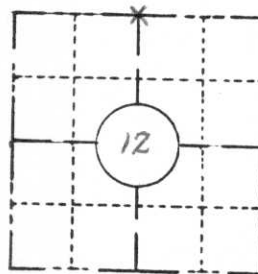
FIELD SURVEY NOTES

**PRESERVATION OF LANDMARKS**

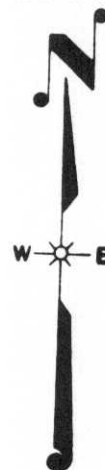
(Pursuant to Section 59.635(7) Wisconsin Statutes

Wisconsin Department of Transportation  
E-D-707-67

COUNTY <i>Lincoln</i>		
TOWN <i>Bradley</i>		
HIGHWAY <i>U.S.H. 51 FREEWAY</i>		
SECTION <i>12</i>	TOWNSHIP <i>T34N</i>	RANGE <i>R6E</i>
TYPE OF LANDMARK <i>North 1/4 corner</i>		



**LOCATION SKETCH**  
(Location of landmark indicated by "x")

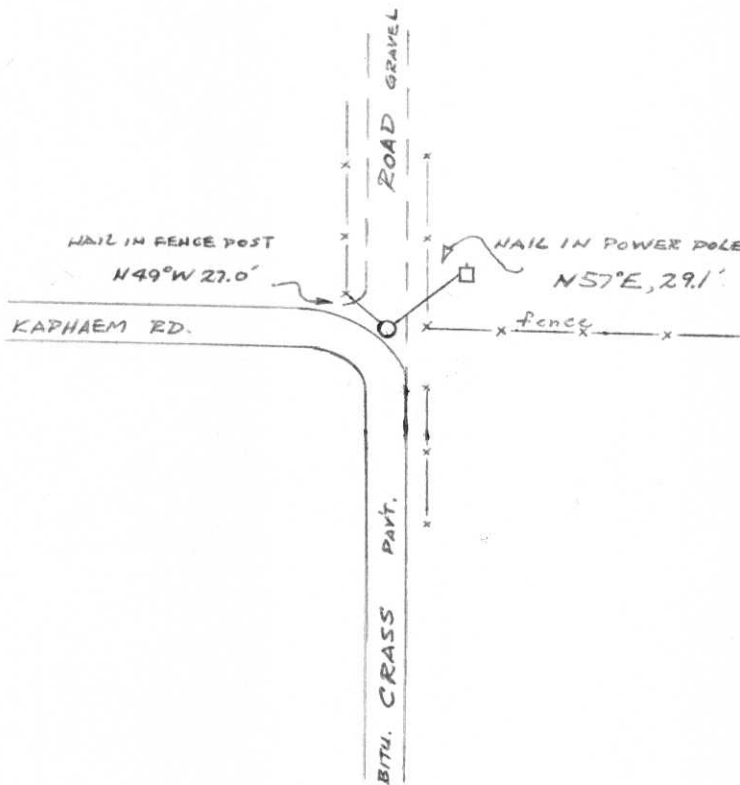


This space for copy of field notes or ties to the above described landmarks

*Mr. August Crass showed me location of iron pipe at fence intersection before Crass Rd. was extended northerly in 1931.*

*No evidence of iron pipe or original corner was found by excavating by GRAD-ALL. Necessary evidence destroyed by road construction or farming.*

*Set Bennett Aluminum monument at Mr. Crass's location, which fits the old fences and made ties.*



FILED UNDER PROJECT <i>U.S.H. 51 FREEWAY</i>		COUNTY CLERK'S OFFICE	
NUMBER <i>I.D. 1173-0-03</i>	CITY	COUNTY OF <i>Lincoln</i>	WISCONSIN } SS
SHC DISTRICT OFFICE NUMBER <i>7</i>	COUNTY <i>Lincoln</i>	DATE RECEIVED FOR RECORD <i>1/26/73</i>	DATE COPY SENT TO COUNTY SURVEYOR
LOCATED OR ESTABLISHED BY <i>NORTHWOODS SURVEYORS, INC.</i>		SIGNATURE OF COUNTY CLERK <i>Ken Oldenburg</i>	
NAME <i>Robert H. Kinnel</i>	TITLE <i>Land Surveyor S-1040</i>	DATE <i>Dec. 1972</i>	

E-23

1/4 cor. 1/12 T34N, RGE

DNDT (LINC Co)

25 Oct 72

WINAT

BUG FOR CORNER @ LOCATION SHOWN BY AUGUST CRASS.  
No evidence of stake found - could have been graded  
out by road construction or maintenance.

6 Nov 72

WINAT, SPRISTAR

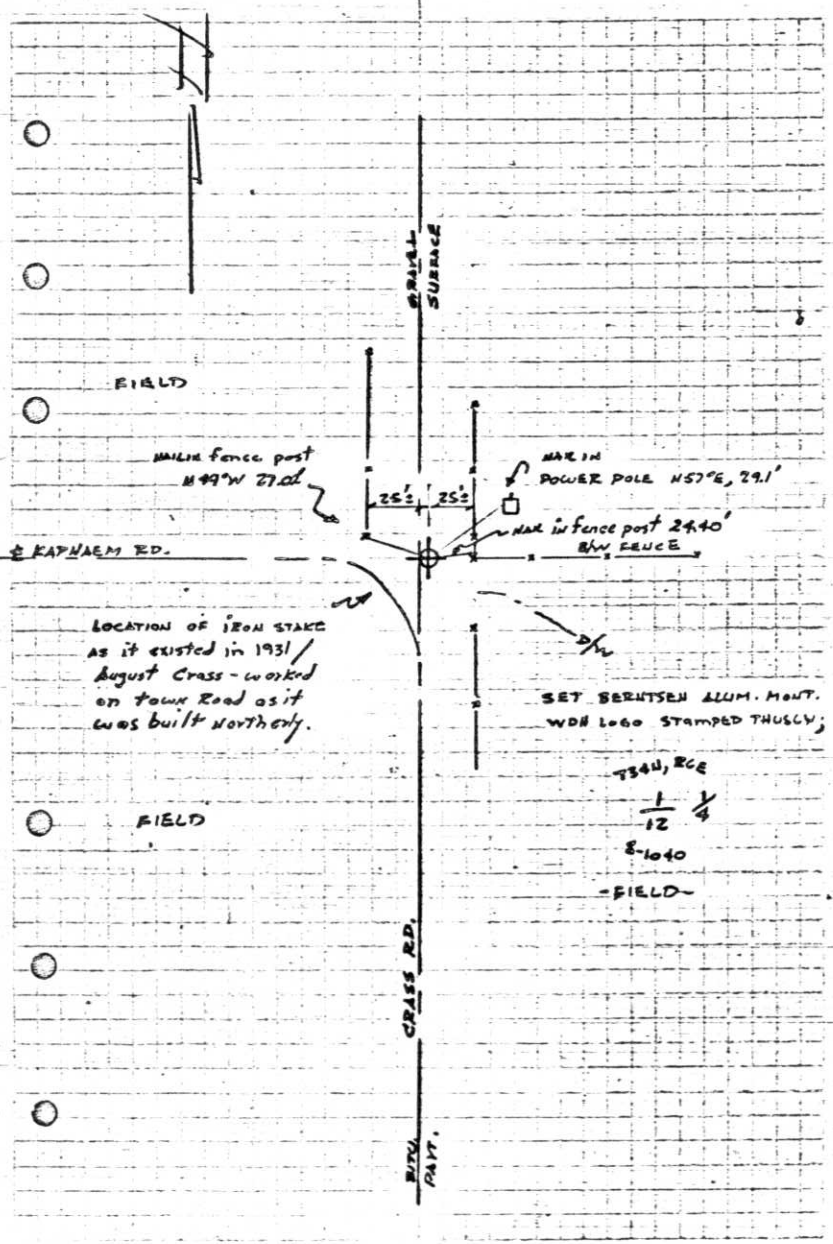
Set monument from Temporary ties of August Crass'  
location of corner.

17 Nov 72

McMULLEN, SPRISTAR

STAMPED CAP & MADE WITNESSES.

88.



Robert Winat, Northwoods Surveyor  
Copies of work done for Division  
of Hwys. Received Feb. 1973