

# U.S. PUBLIC LAND SURVEY MONUMENT RECORD

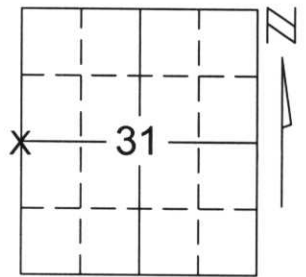
Note: This form is intended and designed to fulfill all requirements of Wisconsin Administrative Code, Chapter A-E 5.02, U.S. Public Land Survey Monument Record (3)(a)(b)(c)(d)(e)(f)(g)(h)(i). An additional sheet may be added if necessary to conform with said requirements.

(a) Corner location: Township 34 North

Range 6 East

Town/City/Village BRADLEY

County LINCOLN

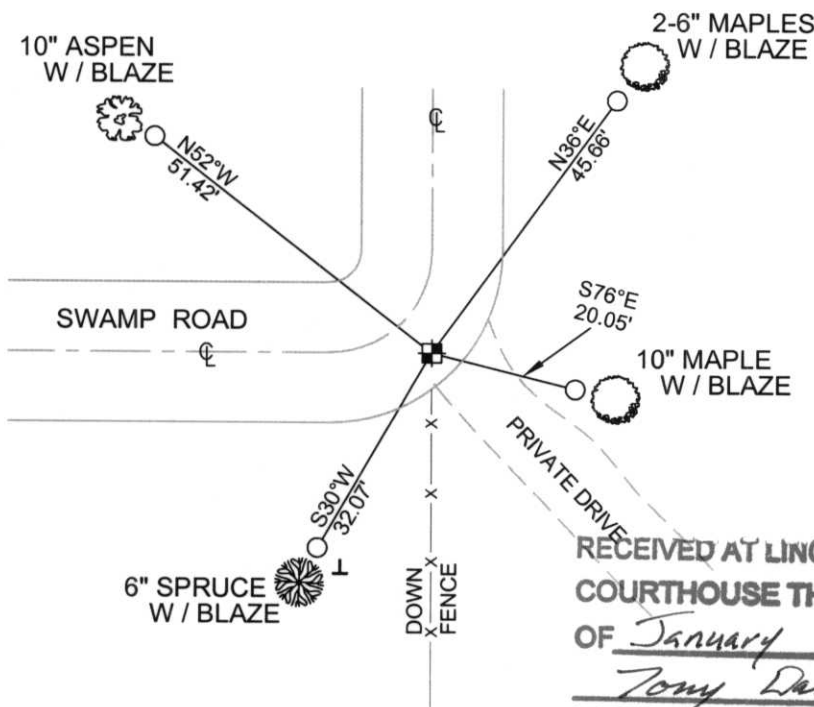


Section 31

(b)(f)(g)(h) Description of monument found at this corner and if it was accepted, state all evidence (material, testimonial, occupational, plats, records, other monuments) used as a basis for accepting. If not accepted or if nothing was found, state evidence used as basis for establishing location. If reestablished through lost corner proportionate methods, indicate all monuments, distances and directions used to establish.

WE SEARCHED FOR THE WEST 1/4 CORNER OF SECTION 31 WITH A GAS POWERED JACKHAMMER AT THE CORNER OF SWAMP ROAD AND A PRIVATE DRIVE AND FOUND NOTHING. SET CORNER BY SINGLE PROPORTION FROM FOUND STONE AT THE SOUTHWEST CORNER OF SECTION 31 AND A FENCELINE / CENTERLINE OF SWAMP ROAD AT THE WEST 1/4 OF SECTION 19. DISTANCE FITS 2.5 MILES WITHIN 1.25 FEET. LINE ALSO FITS FOUND FENCE CORNER ALONG WEST LINE OF THE SOUTHWEST 1/4 WITHIN 1 FOOT. WE SET A LINCOLN COUNTY MONUMENT AND TIED OUT MONUMENT TO PERPETUATE CORNER LOCATION.

(c)(d)(e) Plan view of corner with ties to at least 4 witness monuments. If in disagreement with previously established corner, show the distances between the two corners and also indicate the ties to the disputed corner.



COORDINATES ARE REFERENCED TO THE LINCOLN COUNTY COORDINATE SYSTEM AS DEVELOPED BY THE WISCONSIN DEPARTMENT OF TRANSPORTATION AND WERE DETERMINED BY GPS OBSERVATIONS ON CONTROL POINTS AS SUPPLIED BY LINCOLN COUNTY.

BEARINGS ARE REFERENCED TO MAGNETIC NORTH.

- ⊥ - SET VINYL "T" MARKER POST
- - SET 3/4" x 30" REBAR W/ ALUM CAP 1' FROM BEARING TREE
- ⊕ - WEST 1/4 CORNER SET LINCOLN COUNTY MONUMENT W/ ALUM CAP

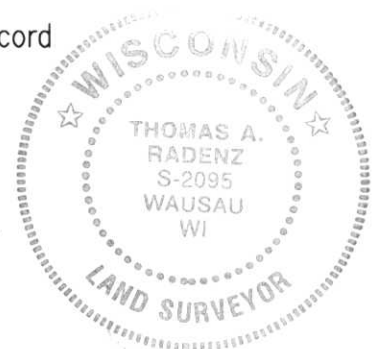
NORTH

NOT TO SCALE

RECEIVED AT LINCOLN COUNTY  
COURTHOUSE THIS 9TH DAY  
OF January 20 02  
*Tony Dallen*  
LAND INFORMATION OFFICE

(i) I, Thomas A. Radenz, RLS certify that the corner location on this record was determined by me or under my direction and control and that this U.S. Public Land Survey Monument Record is correct and complete to the best of my knowledge and belief.

*Thomas A. Radenz*  
Signature \_\_\_\_\_ Date 1/8/2002



Index No. ....

W-1