

U.S. PUBLIC LAND SURVEY MONUMENT RECORD

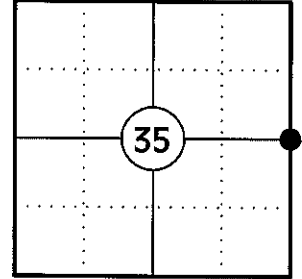
NOTE: THIS FORM IS INTENDED AND DESIGNED TO FULFILL ALL REQUIREMENTS OF WISCONSIN ADMINISTRATIVE CODE CHAPTER A-E 7.08 U.S. PUBLIC LAND SURVEY MONUMENT RECORD (3) (a)(b)(c)(d)(e)(f)(g)(h)(i). AN ADDITIONAL SHEET MAY BE ADDED IF NECESSARY TO CONFIRM WITH SAID REQUIREMENTS.

(a) CORNER LOCATION:

EAST CORNER OF SECTION 35
 TOWNSHIP 34 NORTH
 RANGE 5 EAST
 TOWN OF TOMAHAWK
 COUNTY OF LINCOLN

LINCOLN COUNTY COORDINATES:

N: 198376.11
 E: 359662.75



(b) HISTORY OF ORIGINAL CORNER:

ORIGINAL SURVEYOR: JACKSON L. PRENTICE
 DATE OF SURVEY: JULY 1855

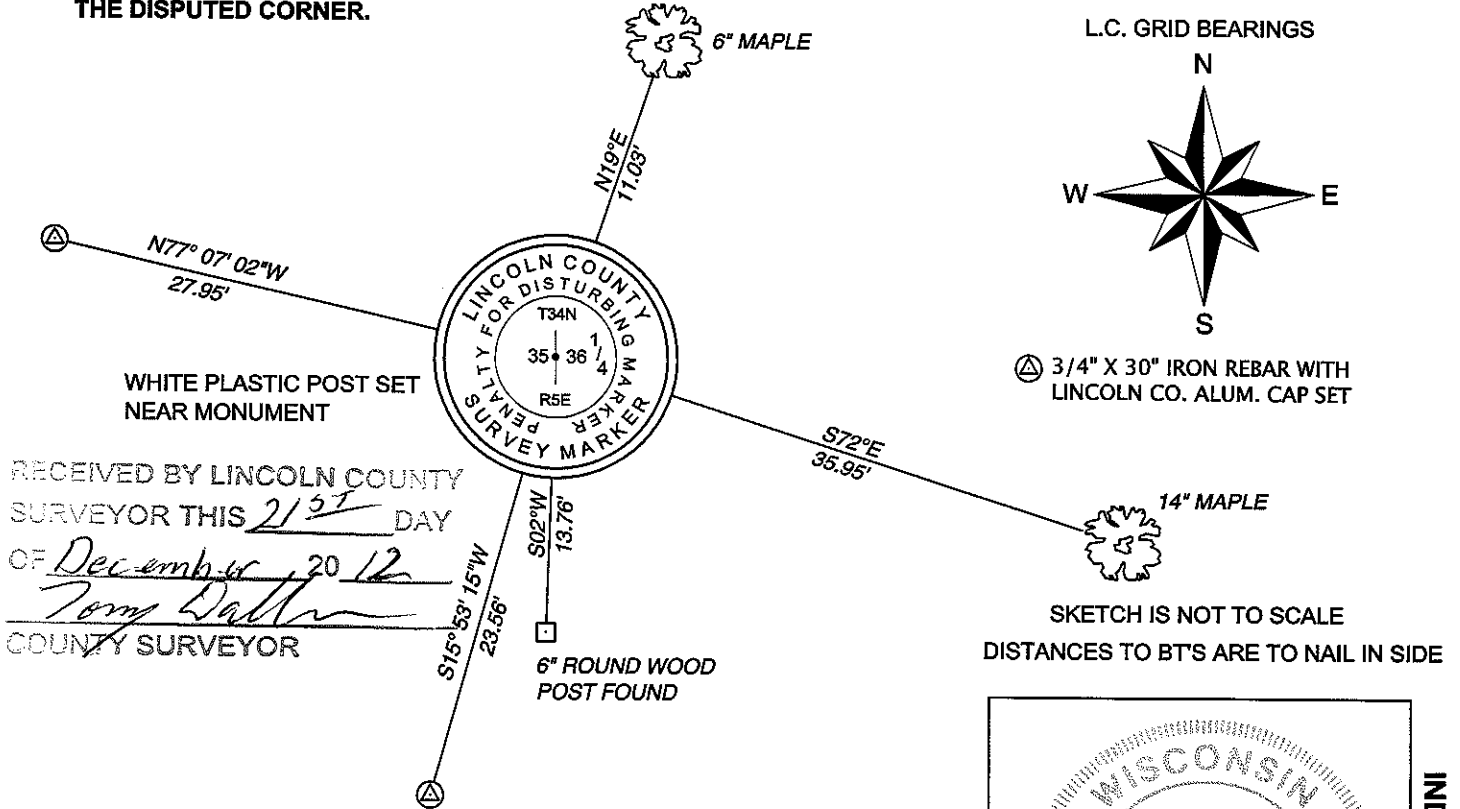
ORIGINAL BEARING TREES: 16" BIRCH - S21°E, 29 LKS
 8" HEMLOCK - S86°W, 12 LKS

(f)(g)(h) DESCRIPTION OF MONUMENT FOUND AT THIS CORNER AND IF IT WAS ACCEPTED STATE ALL EVIDENCE (MATERIAL, TESTIMONIAL, OCCUPATIONAL, PLATS, RECORDS, OTHER MONUMENTS) USED AS A BASIS FOR ESTABLISHING LOCATION. IF REESTABLISHING THROUGH LOST CORNER PROPORTIONATE METHODS, INDICATE ALL MONUMENTS, DISTANCES, AND DIRECTIONS USED TO ESTABLISH. INDICATE TYPE OF MONUMENT AND SIGN POST FOUND OR SET.

1855: JACKSON L. PRENTICE SET THE ORIGINAL 1/4 SECTION CORNER POST.

12/04/2012: I FOUND A WOOD POST NEAR THE CORNER POSITION. THE COUNTY SURVEYOR SAID THAT THE WOOD POST WAS SET BY THE LINCOLN COUNTY FORESTRY DEPARTMENT INCORRECTLY. I POSITIONED THE CORNER BY SINGLE PROPORTION USING THE SE CORNER OF SECTION 35 AND THE NE CORNER OF SECTION 35 AND SET A LINCOLN COUNTY BERNTSEN BREAKAWAY MONUMENT. I MADE TWO BEARING TREES AND SET TWO REFERENCE MONUMENTS TO WITNESS THE CORNER.

(c)(d)(e) PLAN VIEW OF CORNER WITH TIES TO AT LEAST FOUR WITNESSES. IF IN DISAGREEMENT WITH PREVIOUSLY ESTABLISHED CORNER, SHOW THE DISTANCES BETWEEN THE TWO CORNERS AND ALSO INDICATE THE TIE TO THE DISPUTED CORNER.

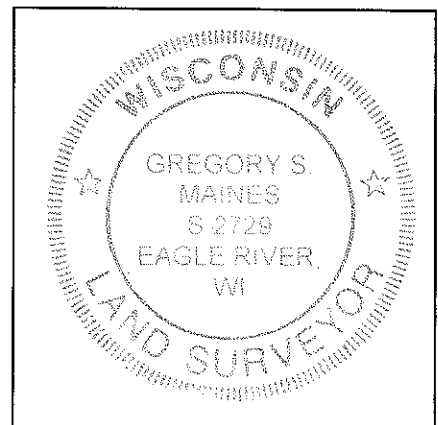


RECEIVED BY LINCOLN COUNTY
 SURVEYOR THIS 21ST DAY
 OF December 20 12
Tom Dalt
 COUNTY SURVEYOR

CERTIFICATION

I GREGORY S. MAINES, REGISTERED LAND SURVEYOR NO. 2729, HEREBY CERTIFY THAT THE CORNER LOCATION ON THIS RECORD WAS REFERENCED BY ME OR UNDER MY DIRECTION AND CONTROL AND THAT THIS U.S. PUBLIC LAND SURVEY MONUMENT RECORD IS COMPLETE TO THE BEST OF MY KNOWLEDGE AND BELIEF.

Gregory S. Maines
 SIGNATURE



INDEX NO. W-21